

Table S1. List of antibodies

Antibody Name	Method	Company & Catalogue number
ATF6	WB & IHC	Abcam (#11909)
BiP	WB	Abcam (#21685)
CHOP	WB	Cell Signaling (#L63F7)
eIF2 α	WB	Cell Signaling (#9721)
p eIF2 α	WB	Cell Signaling (#9722)
F4/80	IHC	AbD Serotec (#mca497r)
GADD153	IHC	Santa-Cruz Biotechnology (#sc-575)
Ki67	IHC	Thermo Scientific (94-RM-9106)
IRE	WB	Cell Signaling (#3294)
pIRE	WB	Abcam, Cambridge, UK, (#48187)
PERK	WB	Cell Signaling (#3192)
pPERK	WB	Cell Signaling (#3179)

Table S2. Primers list for qPCR

Gene	Primer Forward	Primer Reverse
atf4	ccttcgaccagtcgggtt	ctgtcccggaaaaggcat
ccl3	actgcctgctgcttctctaca	aggaaaatgacacctggctgg
ccl4	ttcctgctgttctcttacacc	ctgtctgcctcttttgg
ccl5	agatctctgcagctgcctca	ggagcacttgctgctggtgtag
chop	ctggaagcctggtatgag	cagggtcaagagtagtga

erdj4	ataaaagcctgatgctg	gccattggtaaaagcact
ifn γ	atgaacgctacacactgcatc	ccatcctttgccagttcctc
il-6	tctataccacttcacaagtcgga	gaattgccattgcacaactctt
p58ipk	tttactgccgaagacta	ctggggttagattgagc
tnfa	ggcaggtctactttggagtcattg	acattcgaggctccagtgaattcgg
xbp1 (spliced form)	gagtcgcgacgaggtg	gtgtcagagtccatggga
xbp1 (total)	aagaacacgcttgggaatgg	actccccttggcctccac
ubc	cagccgtatatcttcccagact	ctcagagggatgccagtaatcta

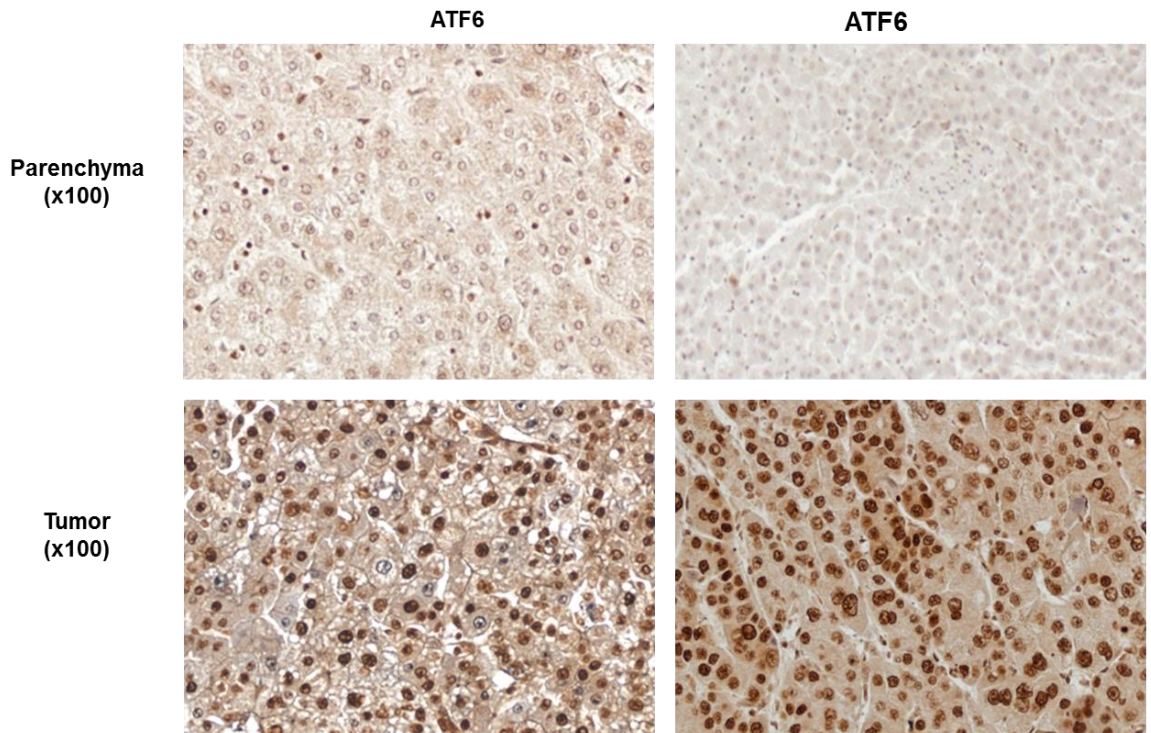


Figure S1. ATF6 is activated in human HCC. Representative samples from liver tumor resected from patients, stained for ATF6.

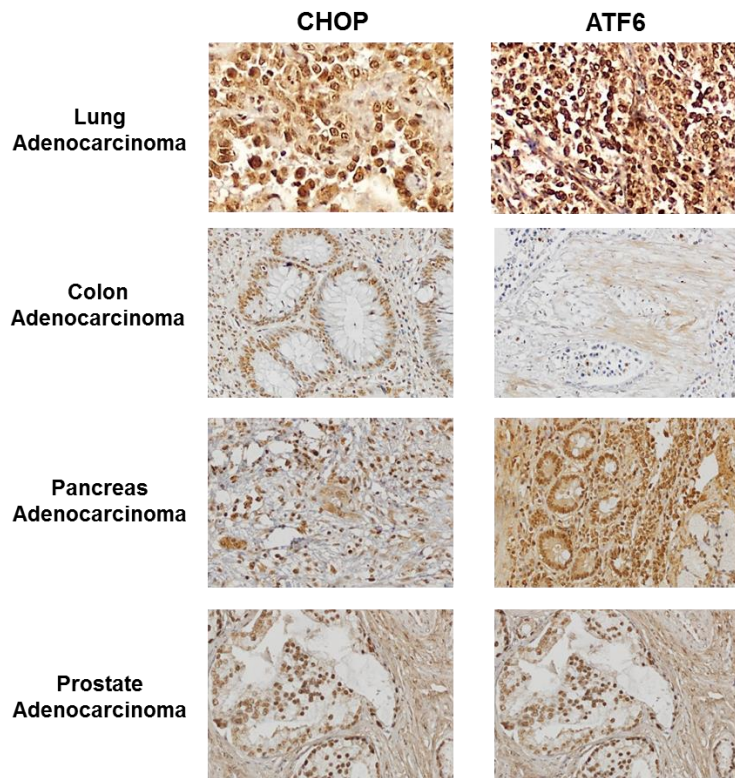


Figure S2. CHOP and ATF6 are activated in different human adenocarcinomas. Representative samples from lung, colon, pancreas and prostate adenocarcinomas show activation of CHOP (left) and ATF6 (right).