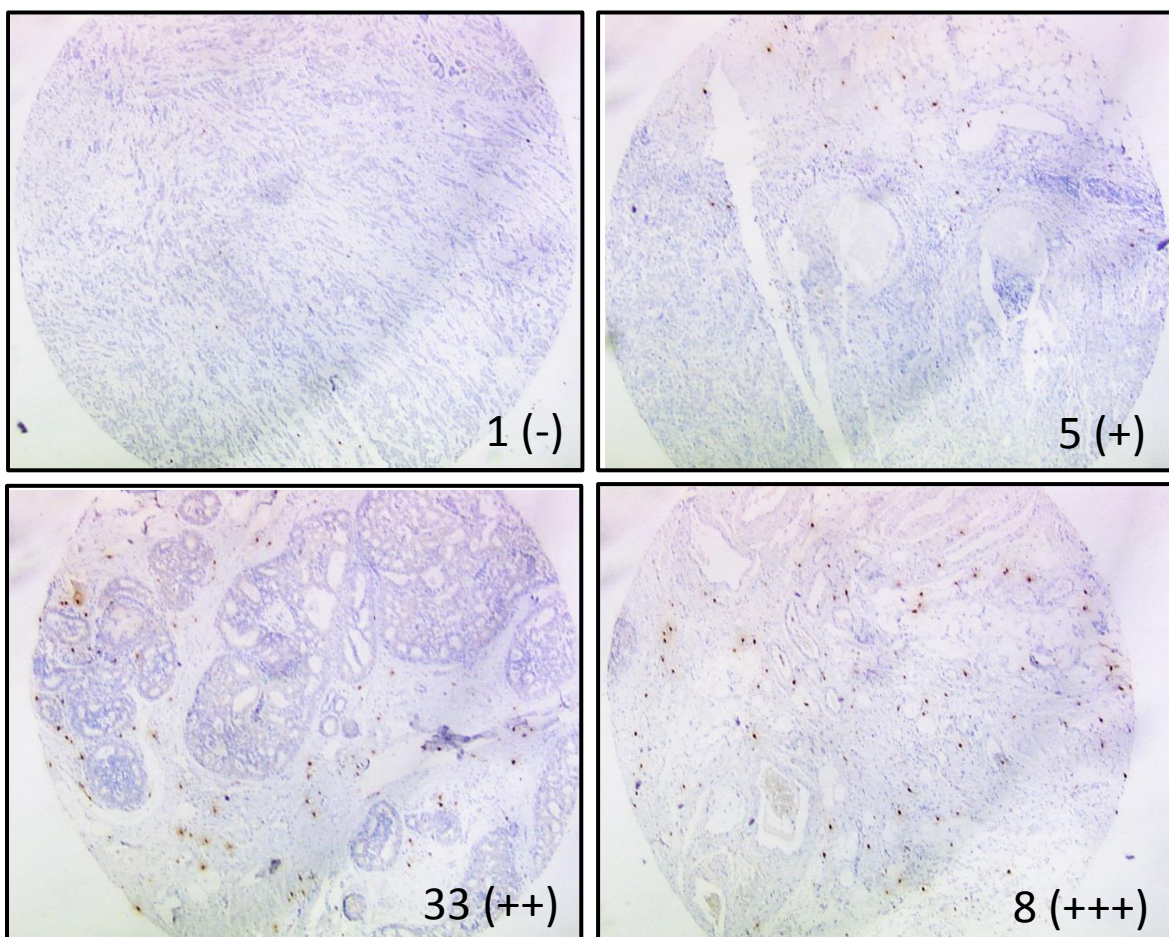


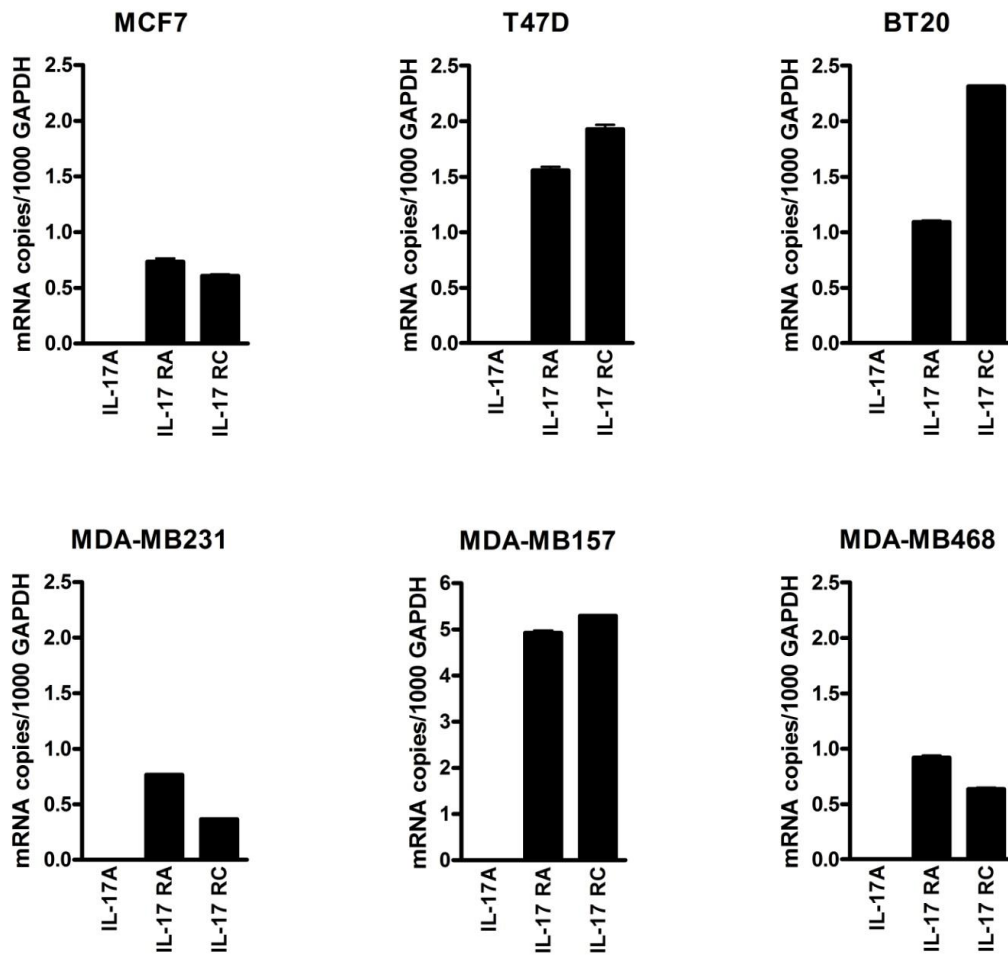
IL-17A is produced by breast cancer TILs and promotes chemoresistance and proliferation through ERK1/2

Stéphanie Cochaud, Jérôme Giustiniani, Clémence Thomas, Emilie Laprevotte, Christian Garbar, Aude-Marie Savoye, Hervé Curé, Corinne Mascaux, Gilles Alberici, Nathalie Bonnefoy, Jean-François Eliaou, Armand Bensussan, Jeremy Bastid

SUPPLEMENTAL INFORMATION



Supplementary Figure 1: Scoring used in breast tissue array. Cancer cases were scored negative (-), weak (+), moderate (++) and strong (+++) depending of the number of the positive cells within the stroma as illustrated (Magnification x20).



Supplementary Figure 2: Expression of IL17A, IL17RA and IL17RC in human cancer cell lines.

Expression of IL17A, IL17RA and IL17RC were analyzed by quantitative RT-PCR.

	ID (match)	Diagnosis	pTNM	Stage	Histological grade	ER	PR	Her2	Last follow up	IL-17A
Primary tumor	1	infiltrating duct carcinoma	T2N0M0	IIA	II	+	+	-	alive	-
	2	infiltrating duct carcinoma	T2N0M0	IIA	II	-	+	-	alive	-
	3	infiltrating duct carcinoma	T2N2aM0	IIIA	II	-	+	-	alive	++
	4	infiltrating duct carcinoma	T2N2aM0	IIIA	III	+	-	+	dead	-
	5	infiltrating duct carcinoma	T2N0M0	IIA	III	-	-	-	alive	++
	6	infiltrating duct carcinoma	T2N0M0	IIA	II	+	-	-	alive	-
	7	infiltrating duct carcinoma	T3N3aM0	IIIC	II	+	-	-	dead	-
	8	infiltrating duct carcinoma	T3N0M0	IIB	II	-	-	-	alive	+++

	9	infiltrating duct carcinoma	T2N2aM0	IIIA	III	-	-	-	alive	-
	10	infiltrating duct carcinoma	T2N0M0	IIA	II	-	-	-	alive	+
	11	infiltrating duct carcinoma	T2N0M0	IIA	III	-	-	+	alive	+
	12	infiltrating duct carcinoma	T2N0M0	IIA	III	+	+	-	alive	-
	13	infiltrating duct carcinoma	T2N0M0	IIA	III	-	-	-	dead	-
	14	sarcomatoid carcinoma	T2N1aM0	IIB	III	-	-	+	alive	+++
	15	infiltrating duct carcinoma	T3N1aM0	IIIA	III	+	-	-	alive	+++
	16	infiltrating duct carcinoma	T2N1miM0	IIB	II	+	+	-	alive	-
	17	infiltrating duct carcinoma	T2N1miM0	IIB	II	-	+	-	alive	++
	18	intraductal papillary carcinoma	T2N0M0	IIA	unknown	+	+	-	alive	+
	19	infiltrating duct carcinoma	T3N0M0	IIB	III	-	-	-	alive	-
	20	atypical medullary carcinoma	T2N1aM0	IIB	unknown	-	-	-	alive	-
	21	infiltrating duct carcinoma	T2N0M0	IIA	III	+	+	-	alive	-
	22	infiltrating duct carcinoma	T2N0M0	IIA	unknown	-	-	-	alive	-
	23	infiltrating duct carcinoma	T2N3aM0	IIIC	II	+	+	-	alive	-
	24	infiltrating duct carcinoma	T2N1miM0	IIB	II	-	+	+	alive	-
	25	infiltrating duct carcinoma	T2N1aM0	IIB	III	-	-	+	alive	-
	26	infiltrating duct carcinoma	T2N1aM0	IIB	III	+	+	+	alive	-
	27	infiltrating duct carcinoma	T2N0M0	IIA	III	+	-	-	alive	-
	28	infiltrating duct carcinoma	T3N1aM0	IIIA	II	+	-	-	alive	-
	29	infiltrating duct carcinoma	T2N1aM0	IIB	II	-	-	-	dead	-
	30	infiltrating duct carcinoma	T3N2aM0	IIIA	II	-	-	+	dead	-
	31	infiltrating duct carcinoma	T2N3aM0	IIIC	III	-	-	-	alive	-
	32	infiltrating duct carcinoma	T2N1aM0	IIB	III	-	-	-	alive	++
	33	infiltrating duct carcinoma	T2N3aM0	IIIC	III	-	-	-	dead	++
	34	infiltrating duct carcinoma	T2N3aM0	IIIC	III	-	-	+	alive	-
	35	infiltrating duct carcinoma	T2N3aM0	IIIC	III	-	-	+	alive	-
	36	infiltrating duct carcinoma	T2N2aM0	IIIA	III	-	-	-	alive	+
	37	infiltrating duct carcinoma	T2N1aM0	IIB	III	-	-	-	alive	-
	38	infiltrating duct carcinoma	T2N3aM0	IIIC	III	-	-	+	alive	+
	39	infiltrating duct carcinoma	T3N2aM0	IIIA	II	-	-	+	alive	+
	40	infiltrating duct carcinoma	T3N3aM0	IIIC	II	-	-	-	dead	-
LNM	41 (31)	metastatic carcinoma				-	-	-		-
	42 (32)	metastatic carcinoma				-	-	-		++
	43 (33)	metastatic carcinoma				-	-	+		-

	44 (34)	metastatic carcinoma				-	-	+		+
	45 (35)	metastatic carcinoma				-	-	+		-
	46 (36)	metastatic carcinoma				-	-	-		-
	47 (37)	metastatic carcinoma				-	-	-		-
	48 (38)	metastatic carcinoma				-	-	+		+
	49 (39)	metastatic carcinoma				-	-	+		-
	50 (40)	metastatic carcinoma				-	-	-		-
Normal	51 (5)	normal								+
	52 (31)	normal								+
	53 (8)	normal								+
	54 (10)	normal								+
	55 (11)	normal								-
	56 (12)	normal								+
	57 (13)	normal								+
	58 (34)	normal								+
	59 (35)	normal								+

Supplementary Table 1: Breast tissue arrays data. LNM = lymph node metastasis. Numbers in brackets indicate samples from the same patient (e.g., sample #45 is the LNM biopsy from cancer case #35, and sample #59 is the normal breast tissue from the same patient)