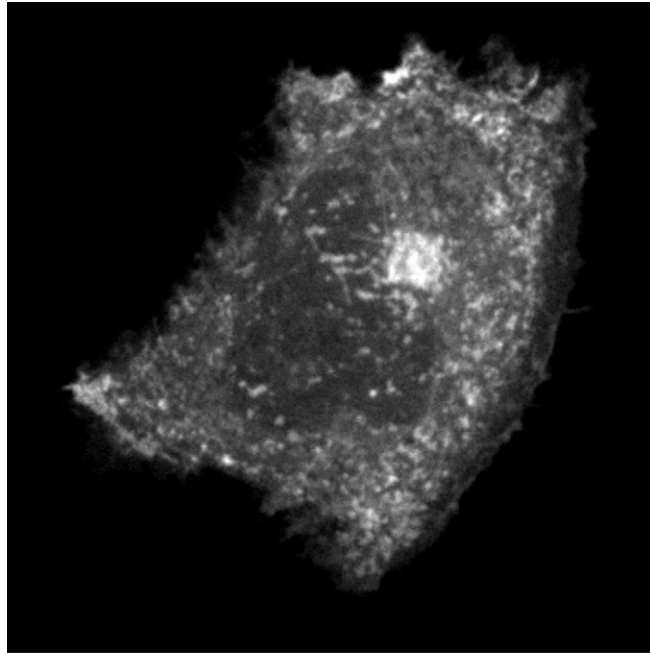


Supporting Information

Larson et al. 10.1073/pnas.1309195110



Movie S1. Time-lapse video of a live HeLa cell ectopically expressing mCherry-CvpA. Images were captured every 30 s for 15 min by confocal fluorescence microscopy and are shown at three frames per second.

[Movie S1](#)

Other Supporting Information Files

[SI Appendix \(PDF\)](#)