

Tang and Brieher, <http://www.jcb.org/cgi/content/full/jcb.201304143/DC1>

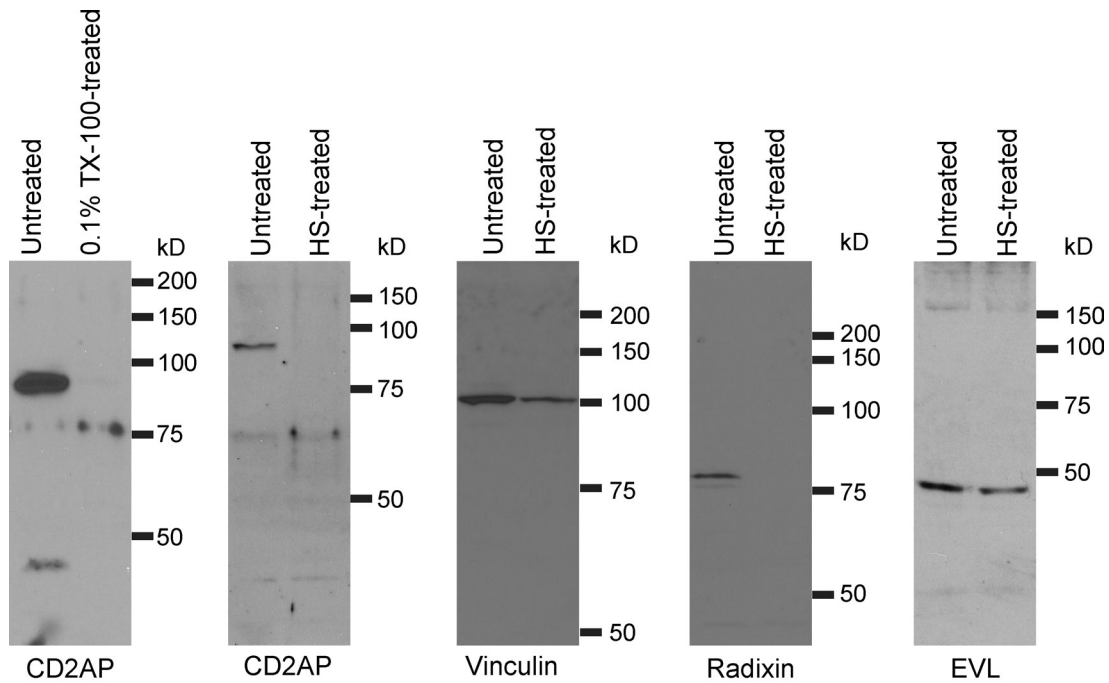


Figure S1. Western blots of junction-enriched liver membranes untreated or treated with 0.1% TX-100 or 1 M KCl (HS) showing differential extraction of CD2AP, vinculin, radixin, and EVL.

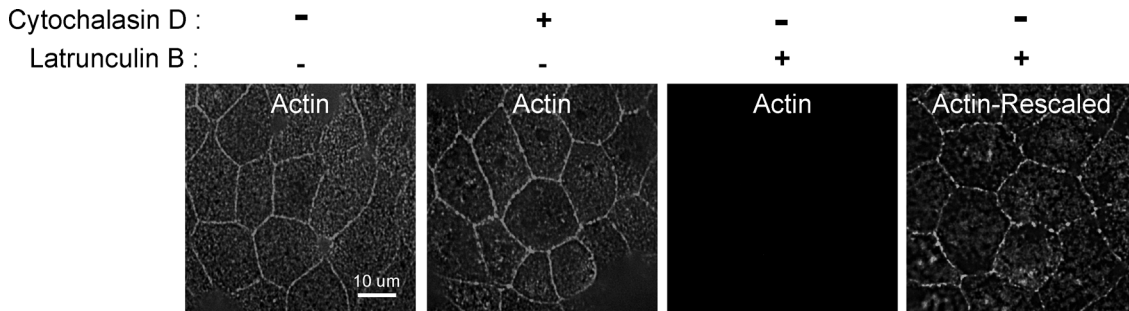


Figure S2. Actin dynamics at the adherens junction involve complex barbed-end regulation. Blocking barbed ends with cytochalasin D for 1 h does not affect actin accumulation at the adherens junction. However, monomer sequestration by latrunculin greatly reduces junctional actin. Latrunculin-resistant actin can be found at the adherens junction after rescaling of the image.

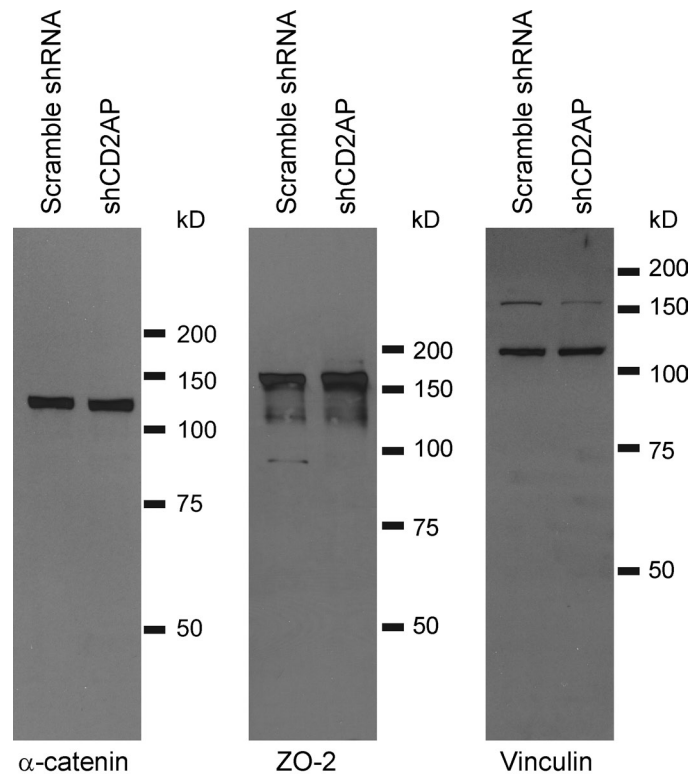


Figure S3. Western blots of total MDCK lysate showing vinculin, α -catenin, and ZO-2 levels unchanged in CD2AP knockdown cells.

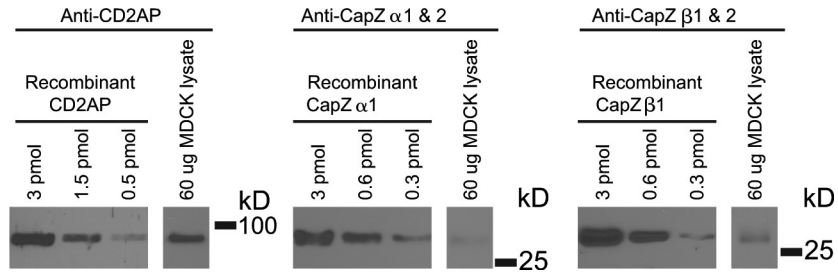


Figure S4. MDCK cells express higher levels of CD2AP than CapZ.

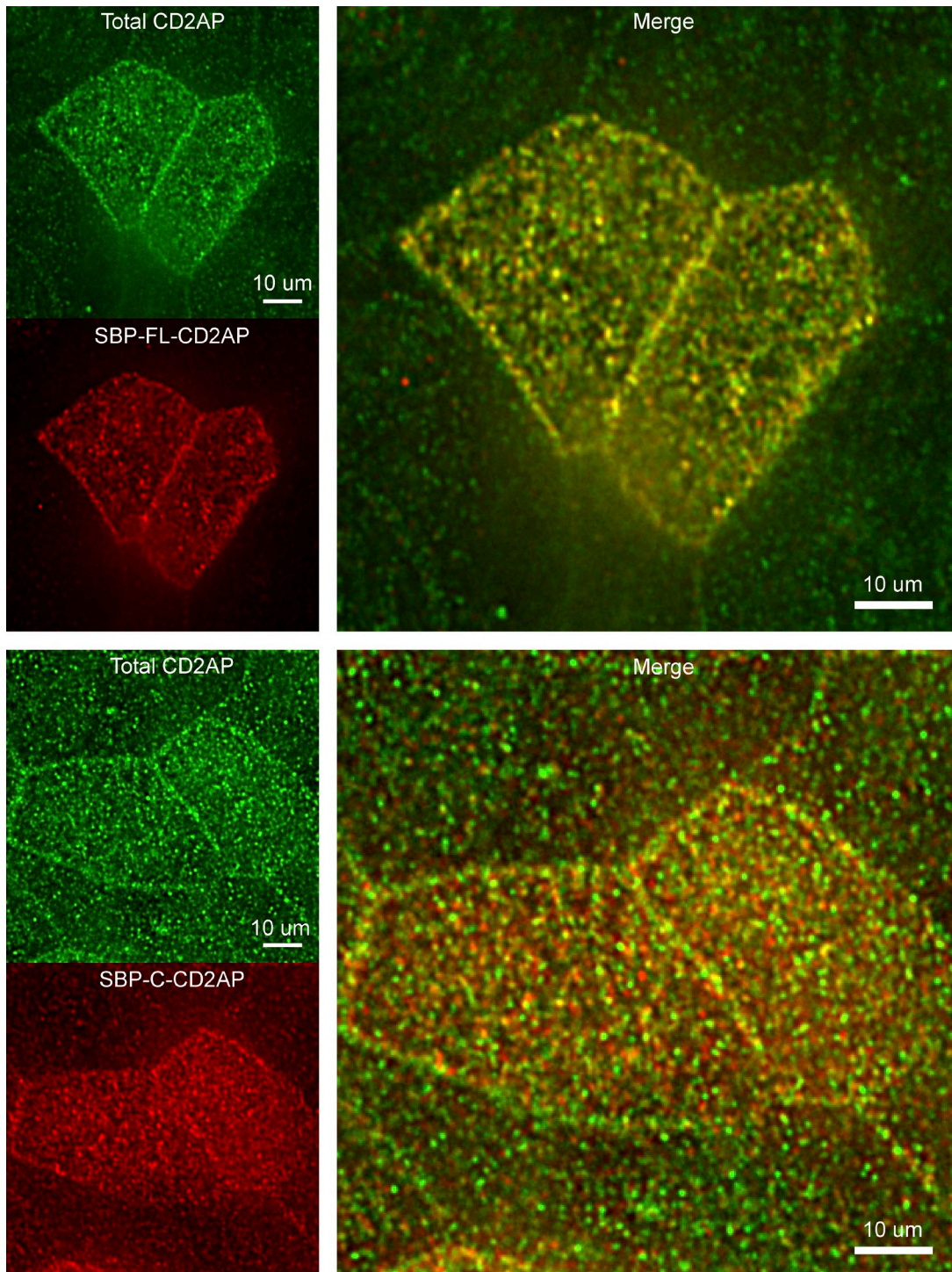


Figure S5. **Exogenous SBP-tagged full-length CD2AP is localized with total CD2AP at the junction.** However, SBP-tagged truncation of CD2AP containing the F-actin binding site but lacking the SH3-containing domain is only partially localized with total CD2AP at the junction.