

Supplemental Figures

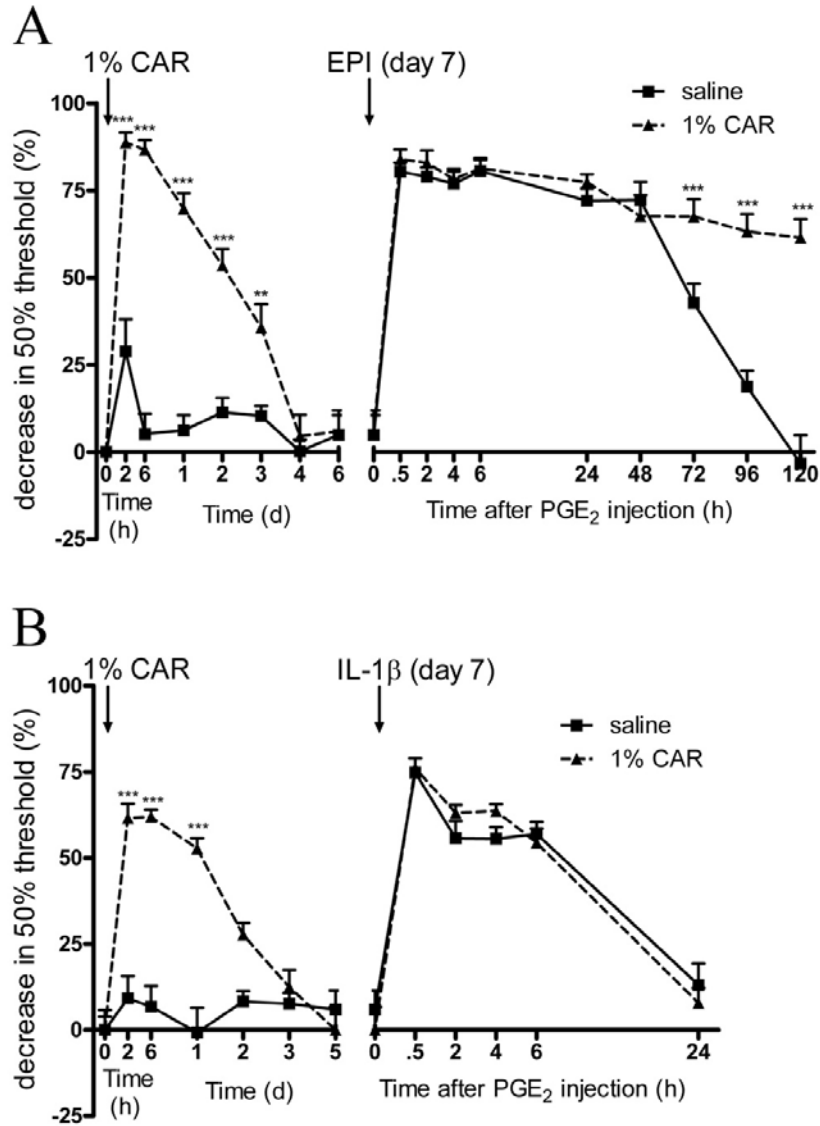


Figure S1. 7 days after carrageenan (CAR)- or saline pretreatment, mice received an intraplantar injection of (A) EPI (10 ng/paw) or (B) IL-1 β (1 ng/paw). The changes in 50% paw withdrawal threshold were monitored over time. Data are expressed as mean \pm SEM. n=8/group, ** $P < 0.01$, *** $P < 0.001$

Lumbar DRG (day 3 after CAR)

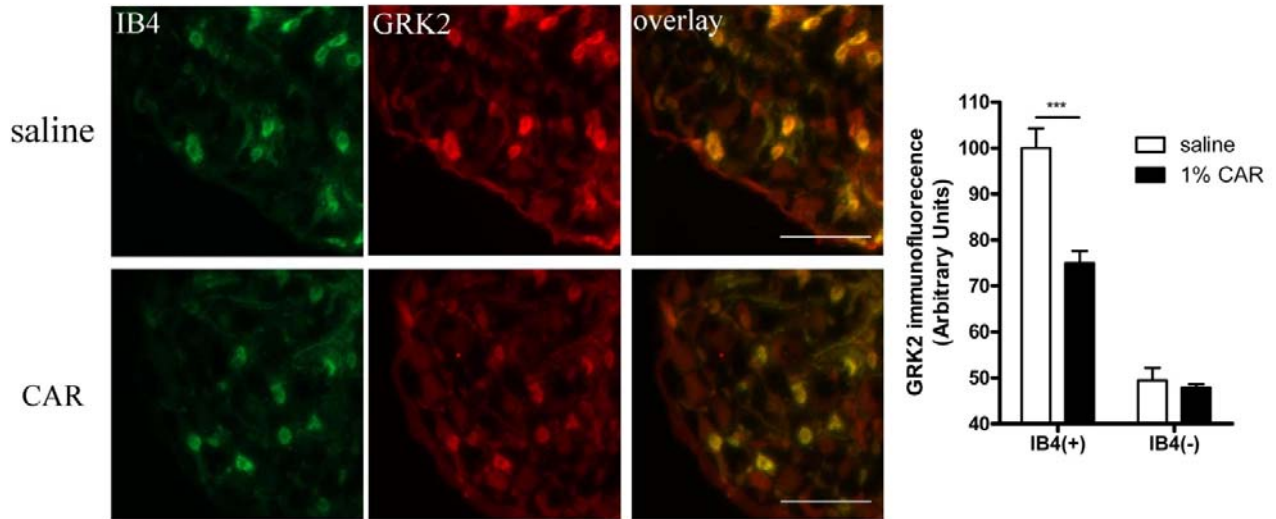


Figure S2. (A) Representative pictures of IB4 (green) and GRK2 (red) double staining of lumbar DRG from saline and carrageenan (CAR)-treated mice and bar graphs representing average GRK2 immunofluorescence intensity in lumbar DRG at 3 days after intraplantar carrageenan or saline. Scale bar: 100 μ m. Data are expressed as mean \pm SEM of 4 mice per group and are based on \sim 300 small diameter neurons from the L3-L5 DRG per mouse. *** $p < 0.001$.

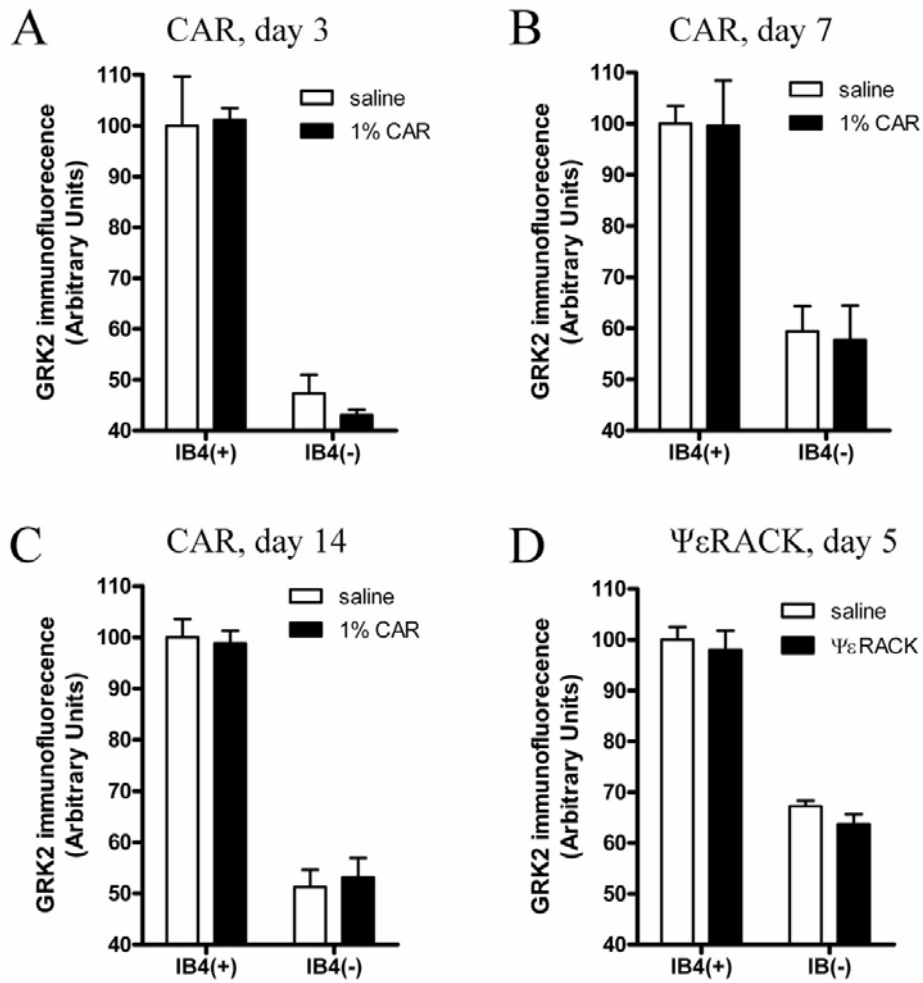


Figure S3. Bar graphs representing the mean GRK2 immunofluorescence intensity in thoracic DRG at (A) 3, (B) 7, (C) 14 days after intraplantar carrageenan (CAR) or 5 days after $\Psi\epsilon$ RACK (D), or saline. Data are expressed as mean \pm SEM of 4 mice per group and are based on \sim 300 small diameter neurons from T6-T10 DRG per mouse.

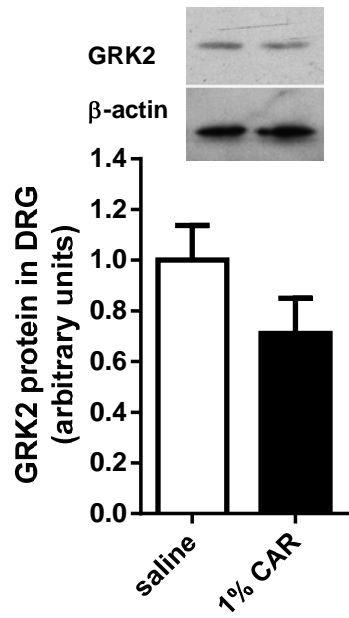


Figure S4. Western blot analysis of GRK2 protein levels. Homogenates of DRG obtained at day 7 after carrageenan were analyzed for GRK2. Data are expressed as mean \pm SEM of 4 mice per group; $p=0.19$

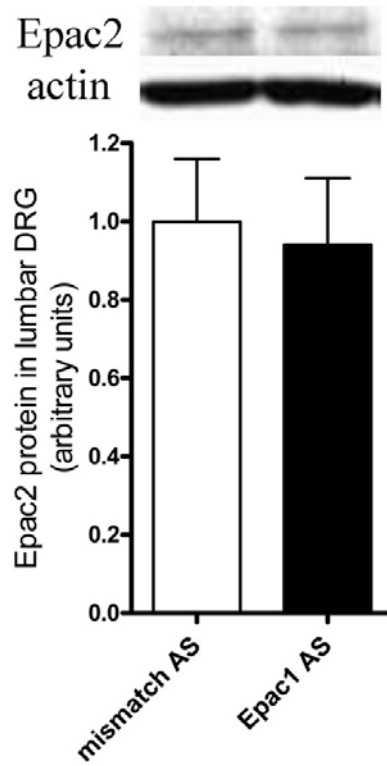


Figure S5. Epac2 protein levels in mice 1 day after last Epac1 antisense ODN treatment. Data are expressed as mean \pm SEM. n=4/group. (AS: antisense ODN)

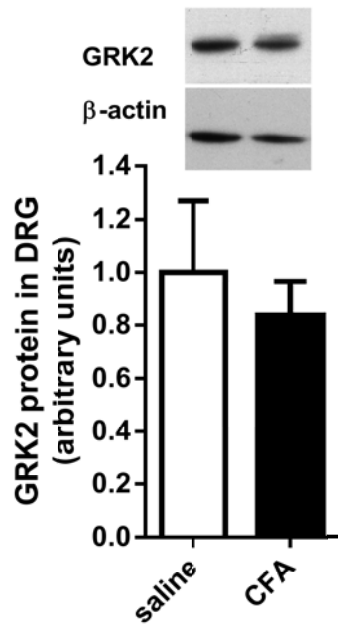


Figure S6. Western blot analysis of GRK2 protein levels. Homogenates of DRG obtained at day 5 after intraplantar CFA were analyzed for GRK2. Data are expressed as mean \pm SEM of 4 mice per group; $p=0.60$