

Supplemental Materials

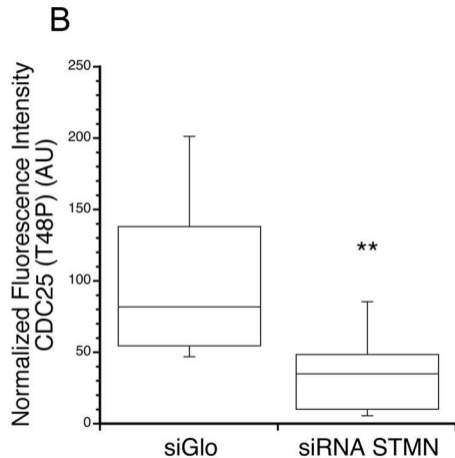
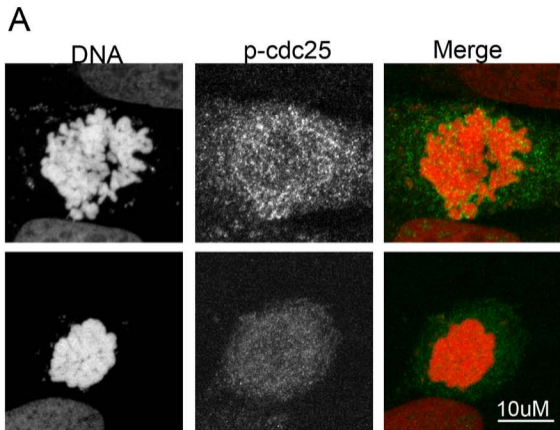
Molecular Biology of the Cell

Silva et al.

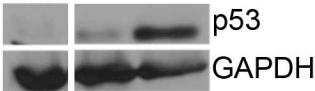
Figure S1: Stathmin depletion from HeLa cells decreased the level of active CDC25. HeLa cells were transfected with siGlo control siRNA, or siRNA targeting stathmin mRNA. Cells were fixed at 48 h post transfection and stained with an antibody recognizing active CDC25 (T48P) (green in merged images) and propidium iodide to stain DNA (red in merged images). (A) Representative images of maximum intensity projections of Z-stacks of active CD25 (T48P) at mitotic entry. Images were analyzed for fluorescence intensity of CDC25 staining. (B) Box plot of relative fluorescence intensities of active CDC25. Values for each cell were normalized to the average of control cells and statistical significance determined using Student's t-test. Data shown was pooled from two independent experiments, at least 7 cells per treatment/experiment. (* * denotes $p < 0.01$).

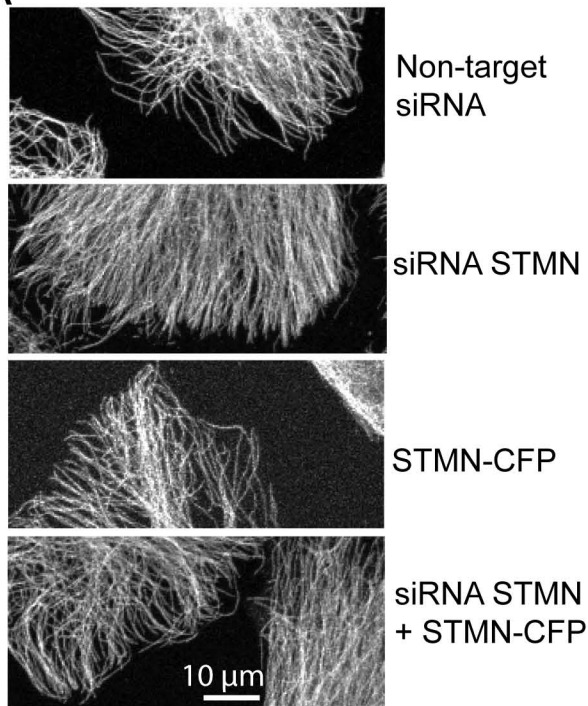
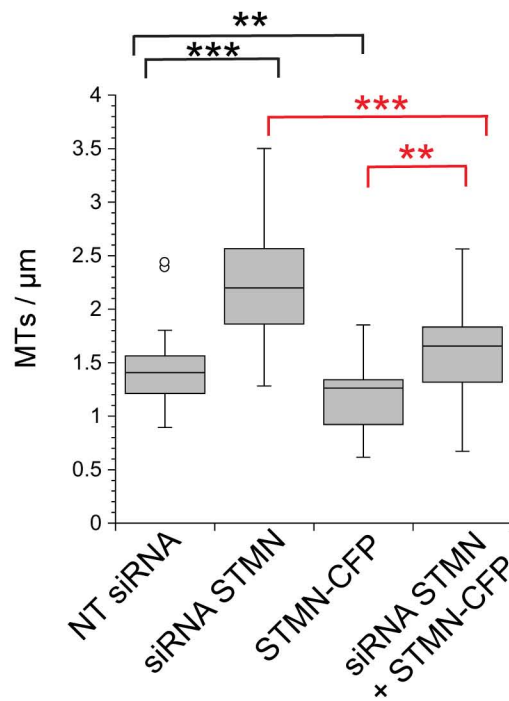
Figure S2: P53 was restored by depletion of HPV E6 protein from HeLa cells. Western blot depicts p53 protein level, reprobbed for GAPDH as a loading control. Doxorubicin treatment was included in one sample to induce p53 stability, increasing detectability by blot (see also Carney and Cassimeris, 2010). A sample unrelated to this experiment was cropped from the blots. The position of the removed lane is shown as a vertical white line.

Figure S3: Exogenous stathmin expression restores normal MT number and mitotic entry timing. HeLa cells were transfected with non-targeting control siRNA, or siRNA targeting 5' UTR of stathmin, and/or plasmid containing stathmin-CFP or STMN-GFP. (A) Representative images of MTs are shown for depletion and/or expression of stathmin (STMN) tagged with GFP or CFP. (B) MT numbers were counted for all detectable ends within 5 μm of the cell periphery and reported as MTs per μm of cell circumference. Box plot represents pooled data from 4 independent experiments with at least 19 cells per treatment. (C-D) Percent of cells staining positive for (C) CDK1 (Y15P) or (D) TPX2. (*, **, *** denotes $p < 0.05$, $p < 0.01$ and $p < 0.001$ respectively).

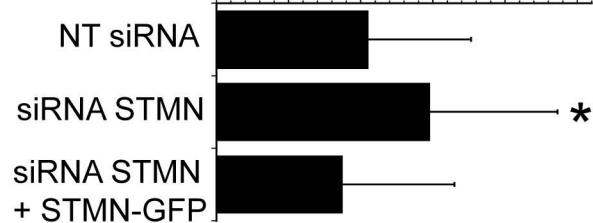


-	-	+	Doxorubicin
-	+	+	siRNA E6
+	-	-	siGlo



A**B****C**

Percent CDK1 (Y15P) Positive Interphase Cells

**D**

Percent TPX2 Positive Interphase Cells

