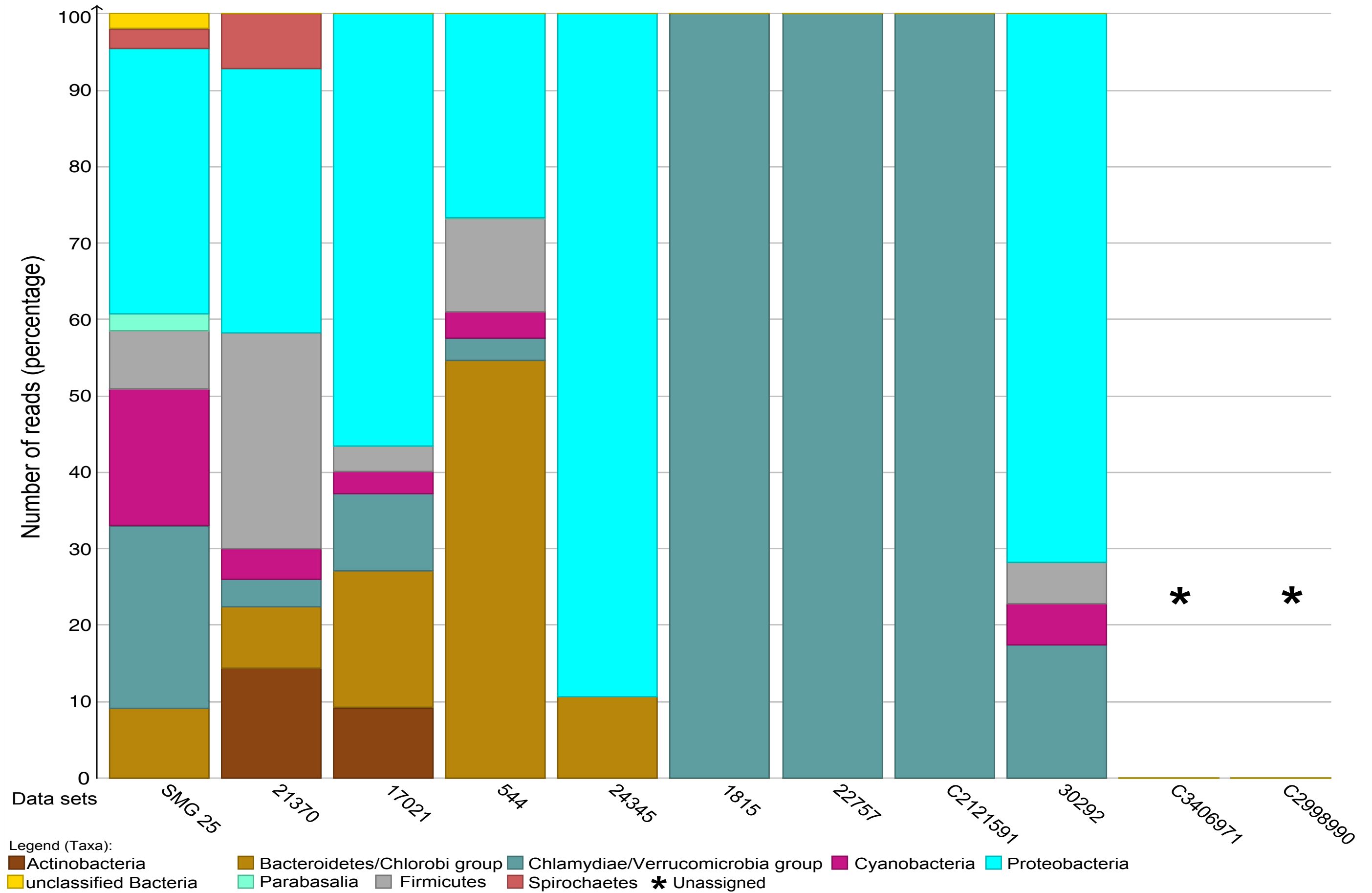


**Figure S3. Taxonomic assignment of scaffold sequences from Human Microbiome Project on which an *stIA* homologue was found.**



**Figure S3. Taxonomic assignment of scaffold sequences from Human Microbiome Project on which an *stIA* homologue was found.** Scaffold sequences were analysed using BLASTX. The BLASTX results were then downloaded and imported in MEGAN 4 software program which performed taxonomic assignment of each scaffold based on BLAST reads. Two of the shorter scaffolds indicated with an asterisk (\*) could not be assigned any taxonomic classification.