

## ONLINE SUPPLEMENT

Correlating Electronic Health Record Concepts with Health Care Process Events

George Hripacsak, MD, MS

David J. Albers, PhD

**Table S1. 60 clinical note concepts and 24 laboratory tests**

<b>Concept or test</b>	<b>Stemmed search phrase or (Laboratory abbreviation)*</b>
afebrile	afebril
atrial fibrillation	afib
albumin	(albumin)
spironolactone	aldacton
alanine transferase	(alt)
amylase	(amylase)
anemia	anem
ascites	ascit
aspartate aminotransferase	(ast)
asthma	asthm
atelectas	atelectas
bicarbonate	(bicarbonate)
bilirubin	(bilirubin)
cardiomyopathy	cardiomyopathy
chloride	(chloride)
cirrho	cirrho
cytomegalovirus	cmv
chronic obstructive pulmonary disease	copd
warfarin	coumadin
creatinine	(creatinine)
chronic renal insufficiency	cri
cerebrovascular accident	cva
depression	depress
diabetes	diabet
dialysis	dialys
dialysis	dialysis
diarrhea	diarrhe
digoxin	digoxin
diuretic	diuret
dyspnea	dyspne
emesis	emesis
extubate	extubate
fracture	fracture
furosemide	furosemid
gastritis	gastriti
gentamicin	gentamicin
glucose	(glucose)
glyburide	glyburide
hydrochlorothiazide	hctz
headache	headache

hematocrit	(hematocrit)
hemoglobin	(hemoglobin)
hyperglycemia	hyperglycem
hyperkalemia	hyperkalem
hypernatremia	hypernatrem
hypertension	hypertensi
hypoglycemia	hypoglycem
hypokalemia	hypokalem
hypomagnesemia	hypomagnesem
hyponatremia	hyponatrem
hypotension	hypotensi
hypothyroid	hypothyroid
international normalized ratio	(inr)
insulin	insulin
intubate	intubate
furosemide	lasix
lipase	(lipase)
magnesium	(magnesium)
metformin	metformin
methicillin-resistant Staphylococcus aureus	mrsa
nausea	nausea
osteomyelitis	osteomyelit
osteoporosis	osteoporo
pancreatitis	pancreatit
platelet count	(platelet)
clopidogrel	plavix
pneumonia	pneumon
potassium	(potassium)
prothrombin time	(pt)
partial thromboplastin time	(ptt)
red blood cell count	(rbc)
schizophrenia	schizophreni
seizure	seiz
sepsis	sepsis
sodium	(sodium)
tuberculosis	tb
total creatine kinase	(total-ck)
troponin-i	(troponin-i)
ulcer	ulcer
urea nitrogen	(urea_nitrogen)
urinary tract infection	uti
vomiting	vomit
ventricular tachycardia	vtach
white blood cell count	(wbc)

\*Sorted by second column to facilitate look up in figures.

Figure S1. Clusters of laboratory values based on inpatient admission events

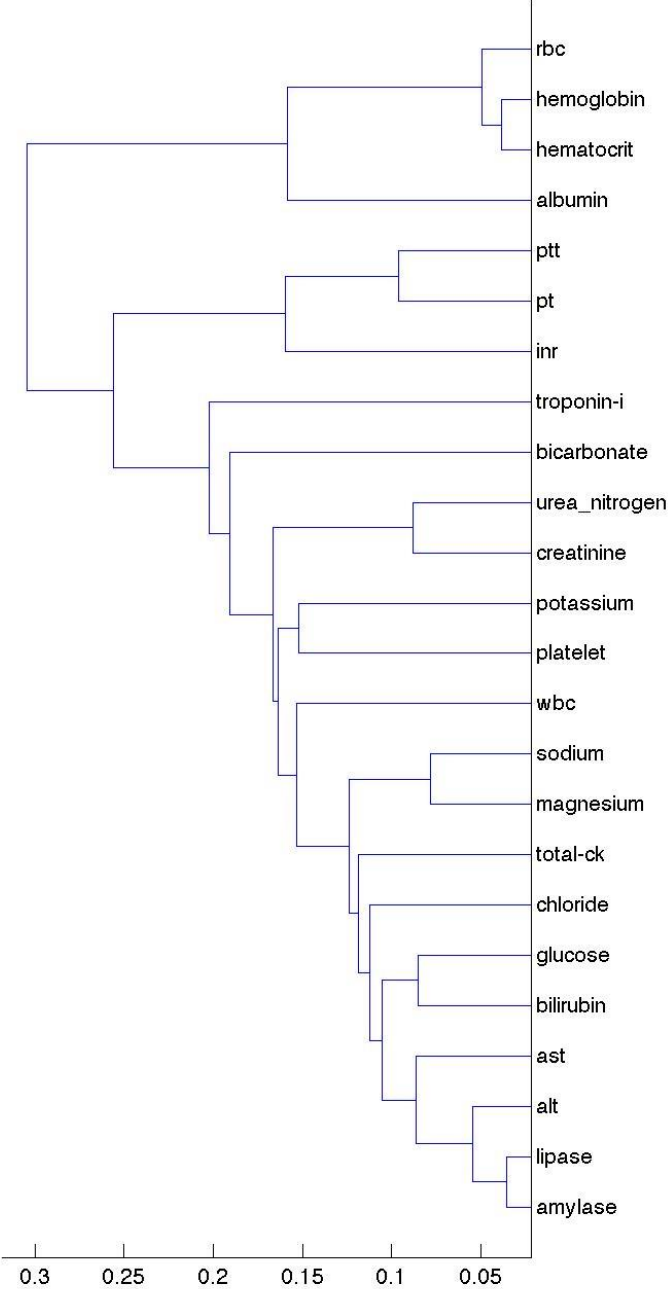


Figure S2. Clusters of laboratory values based on inpatient discharge events

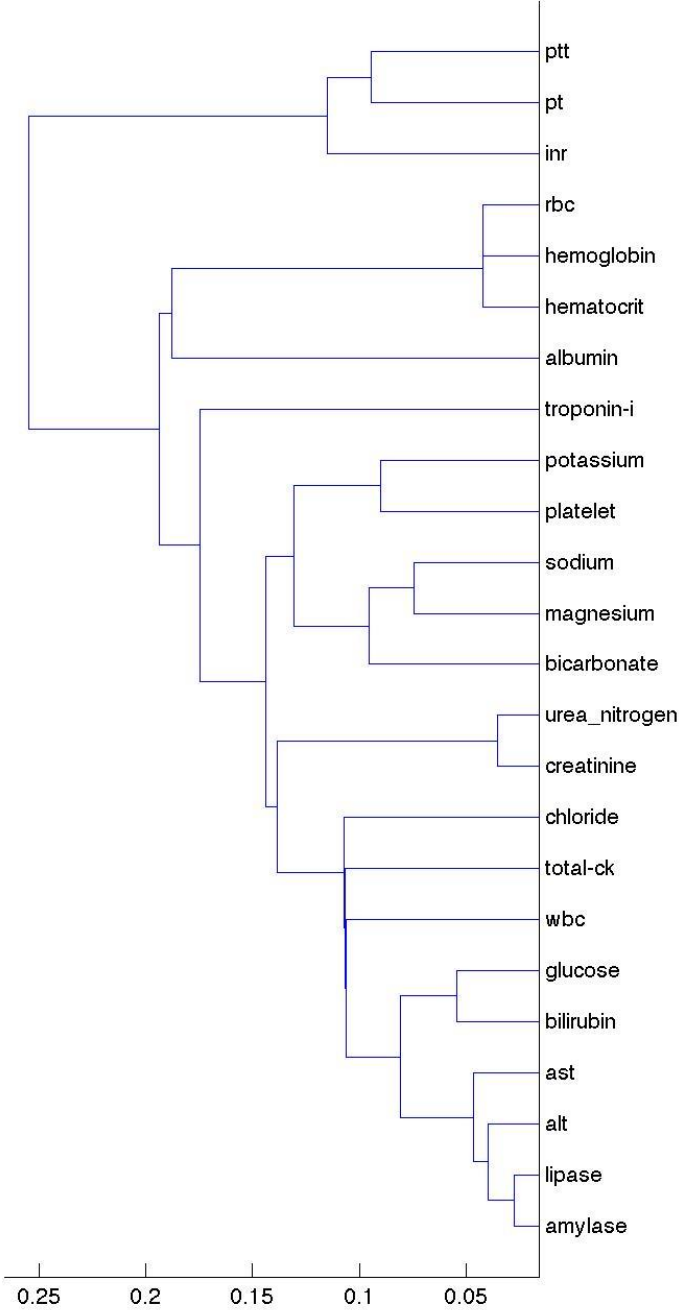


Figure S3. Clusters of laboratory values based on ambulatory surgery events

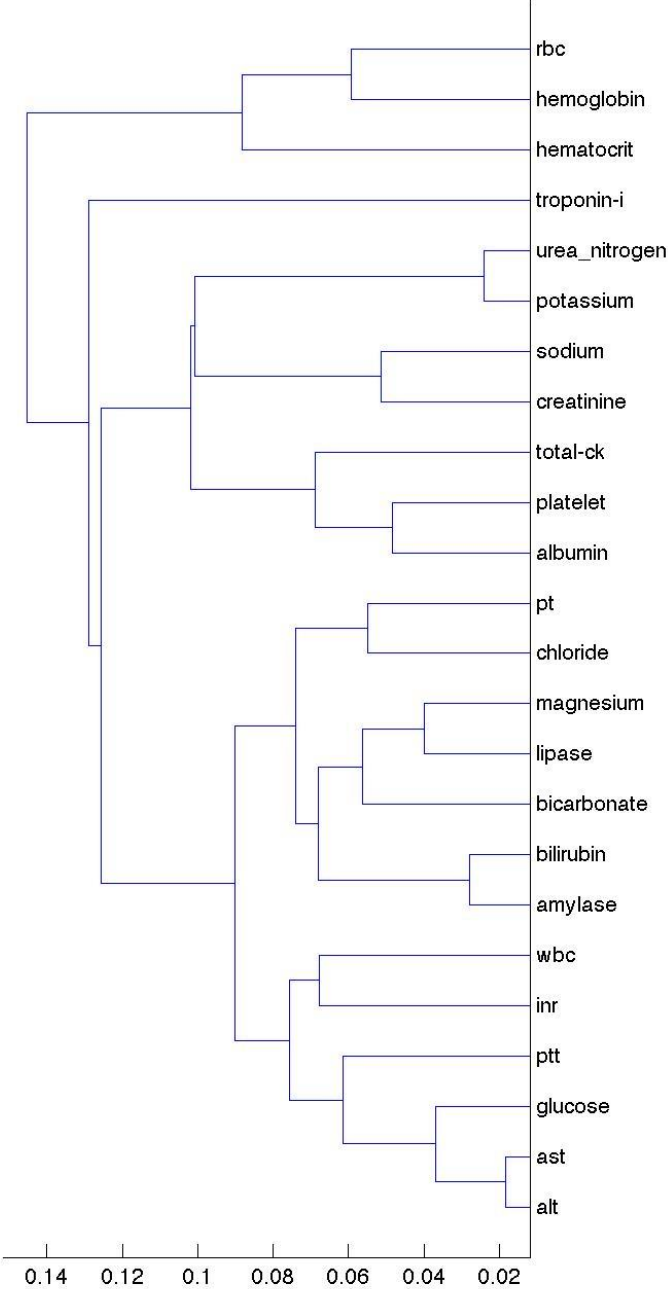


Figure S4. Clusters of laboratory values based on emergency department events

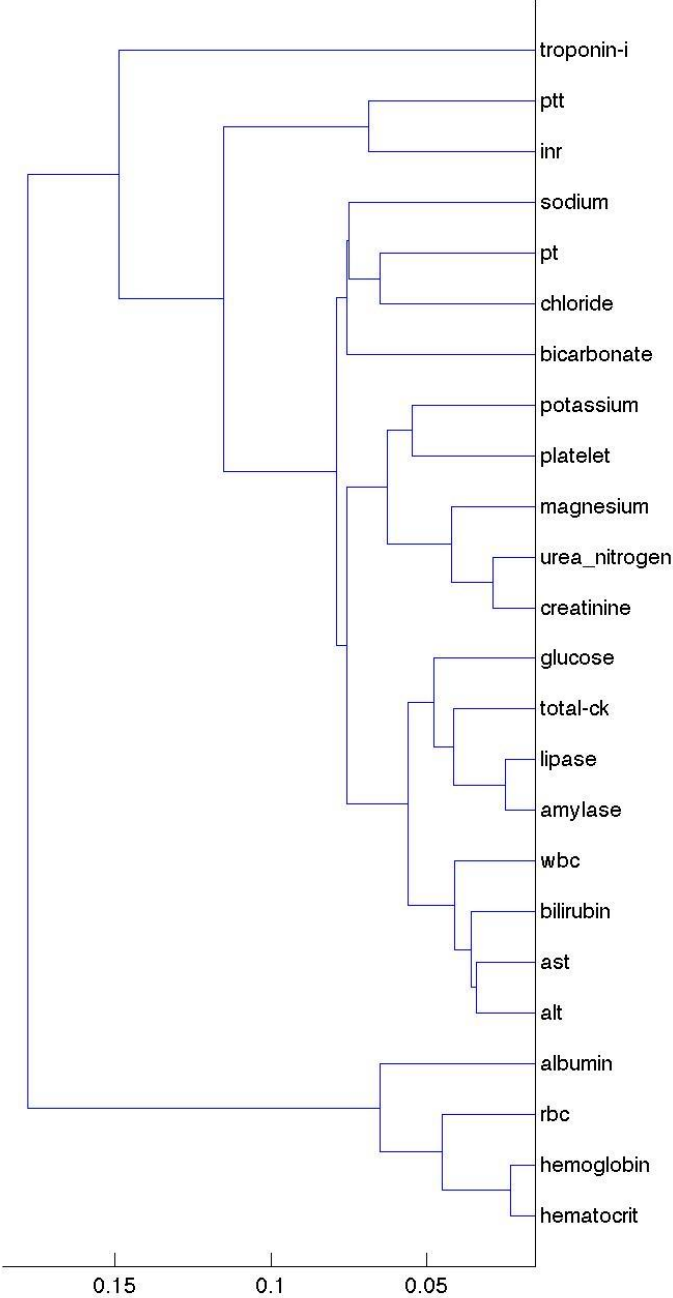


Figure S5. Clusters of laboratory values based on outpatient visit events

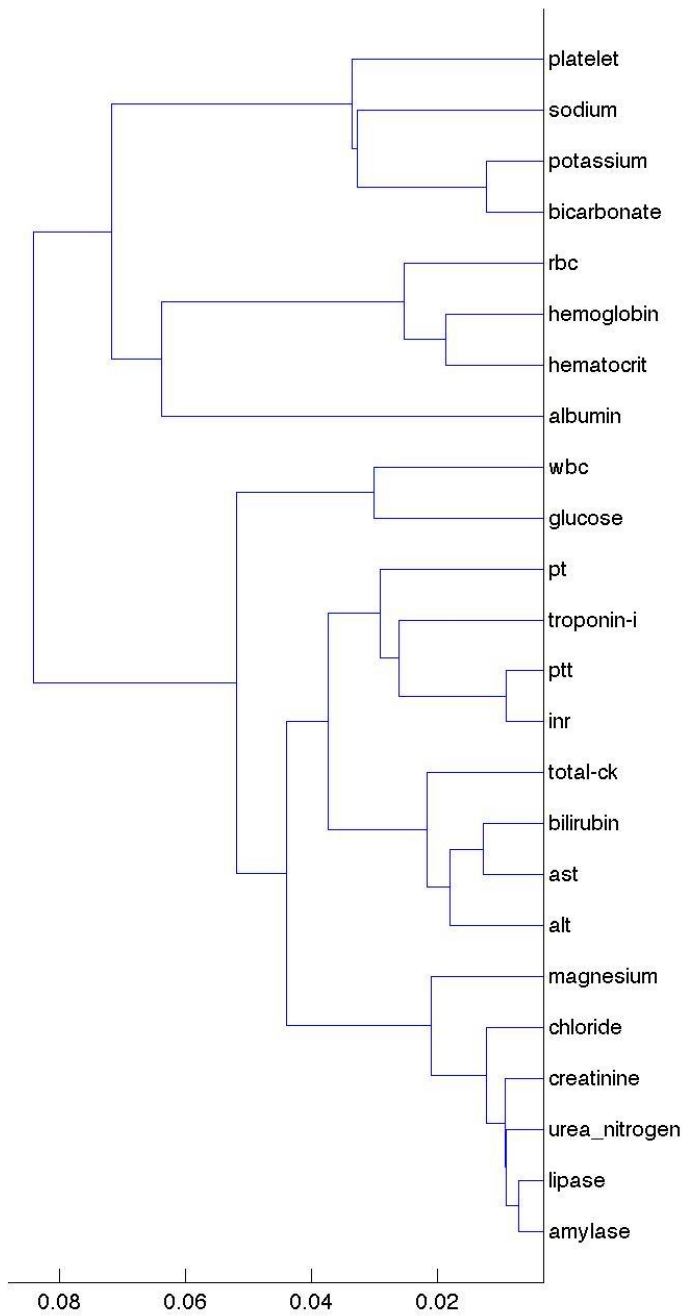


Figure S6. Clusters of note and laboratory concepts based on inpatient admission events

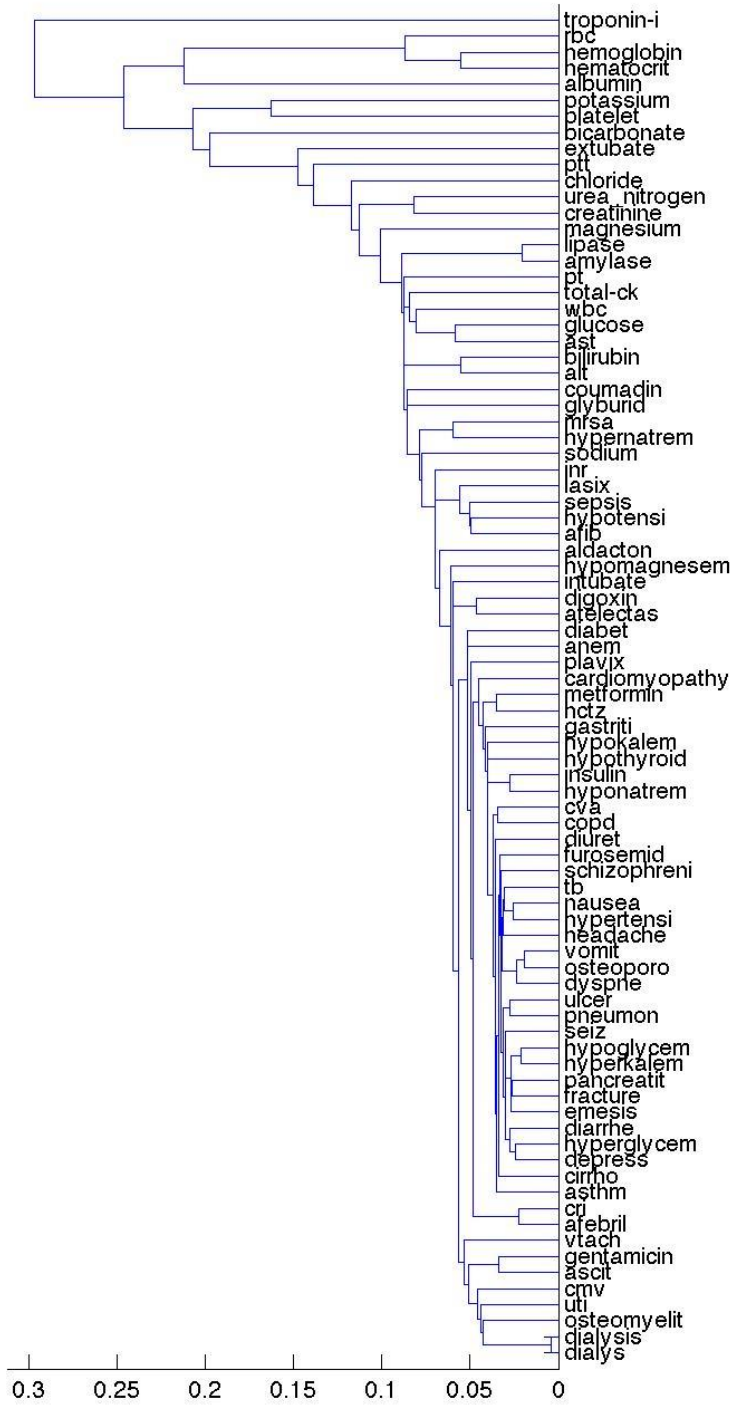




Figure S7. Clusters of note and laboratory concepts based on inpatient discharge events

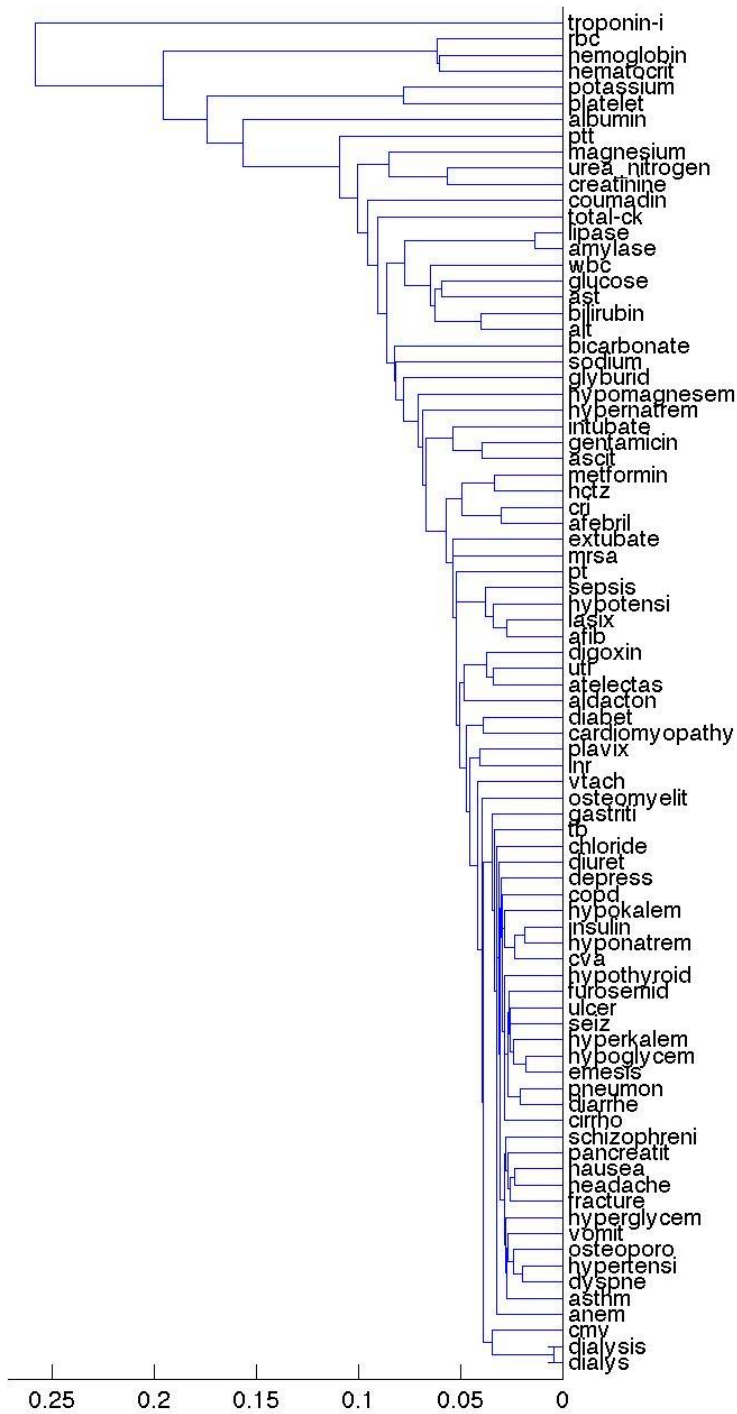


Figure S8. Clusters of note and laboratory concepts based on ambulatory surgery events

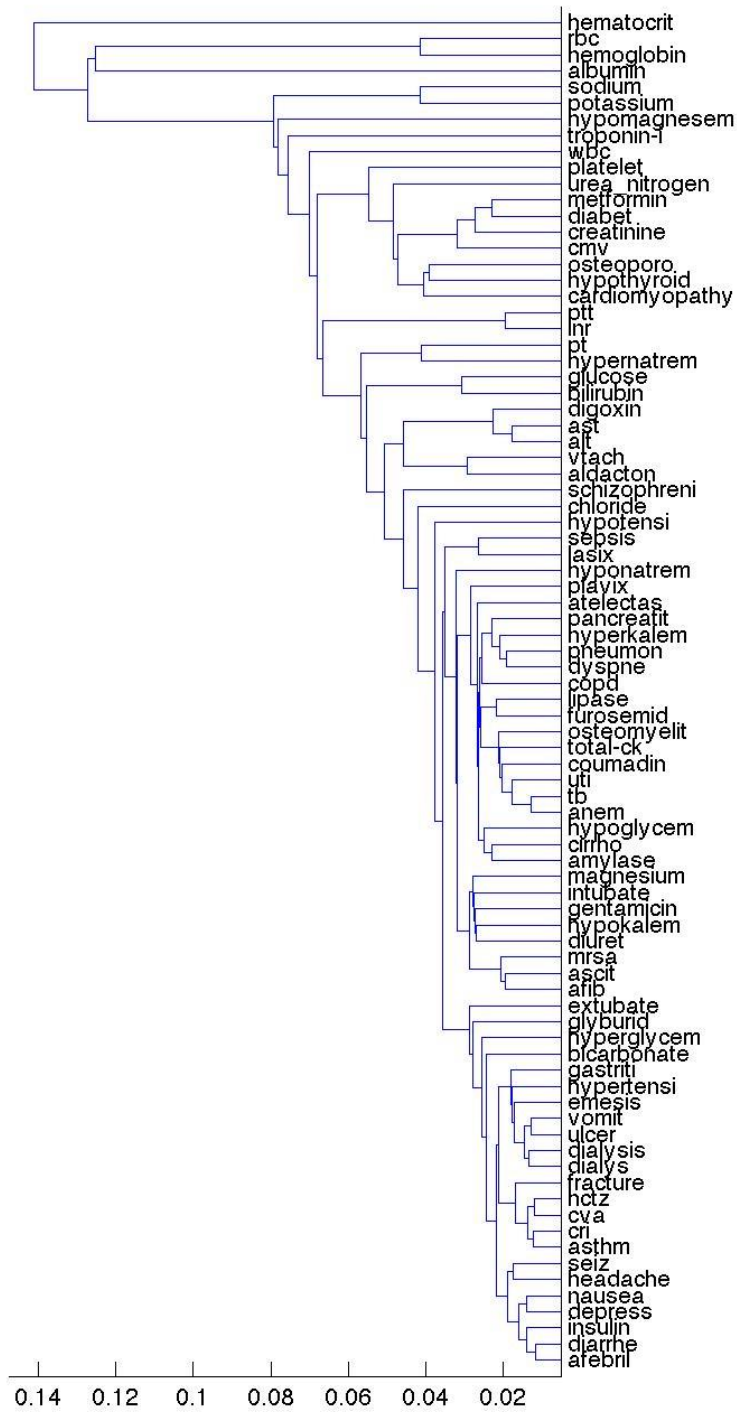


Figure S9. Clusters of note and laboratory concepts based on emergency department events

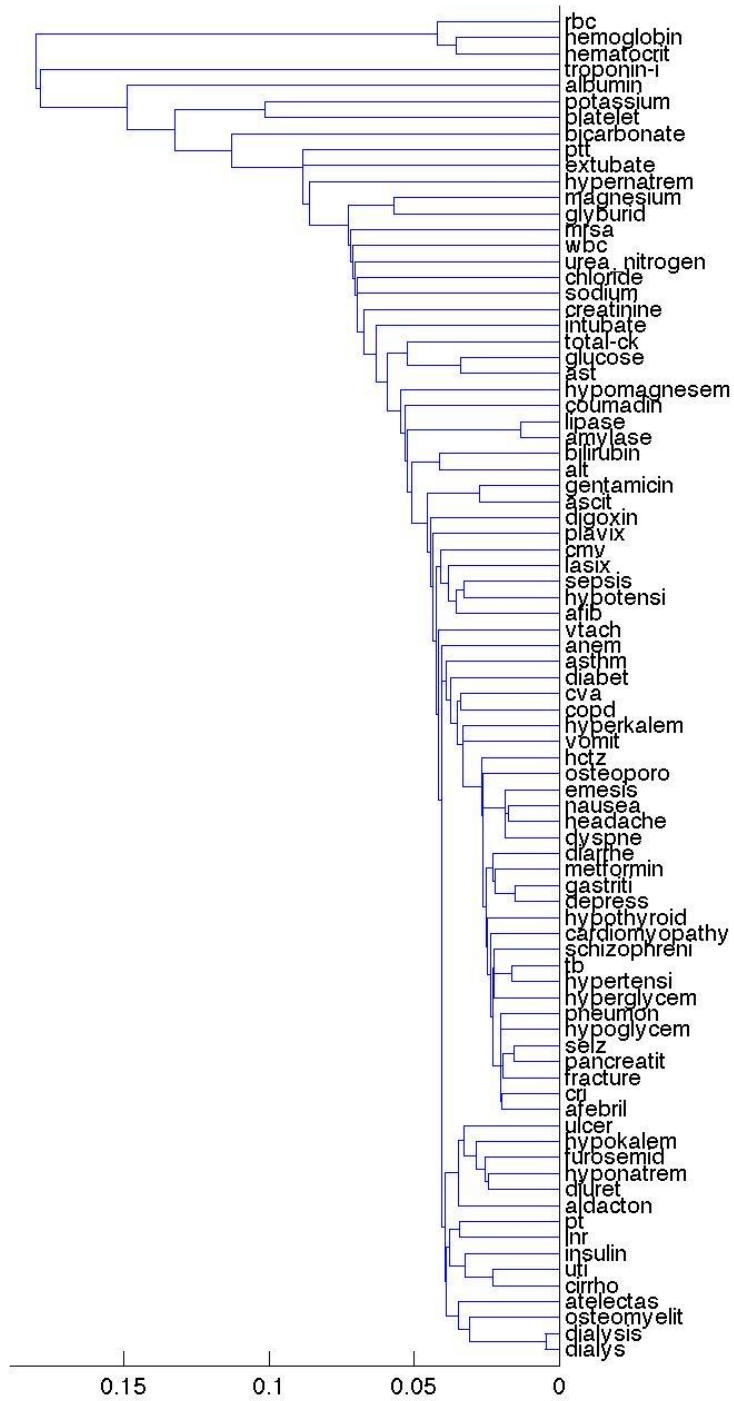


Figure S10. Clusters of note and laboratory concepts based on outpatient visit events

