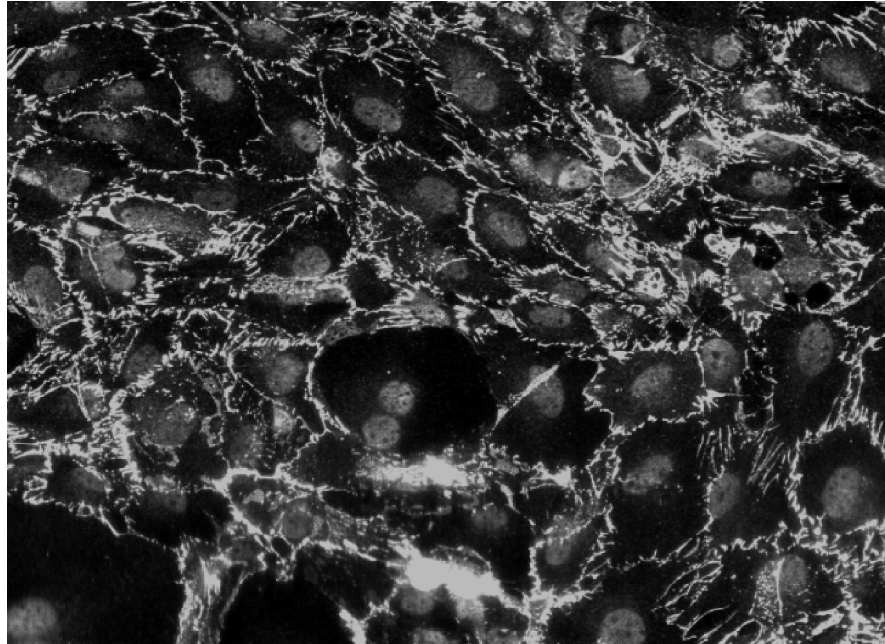
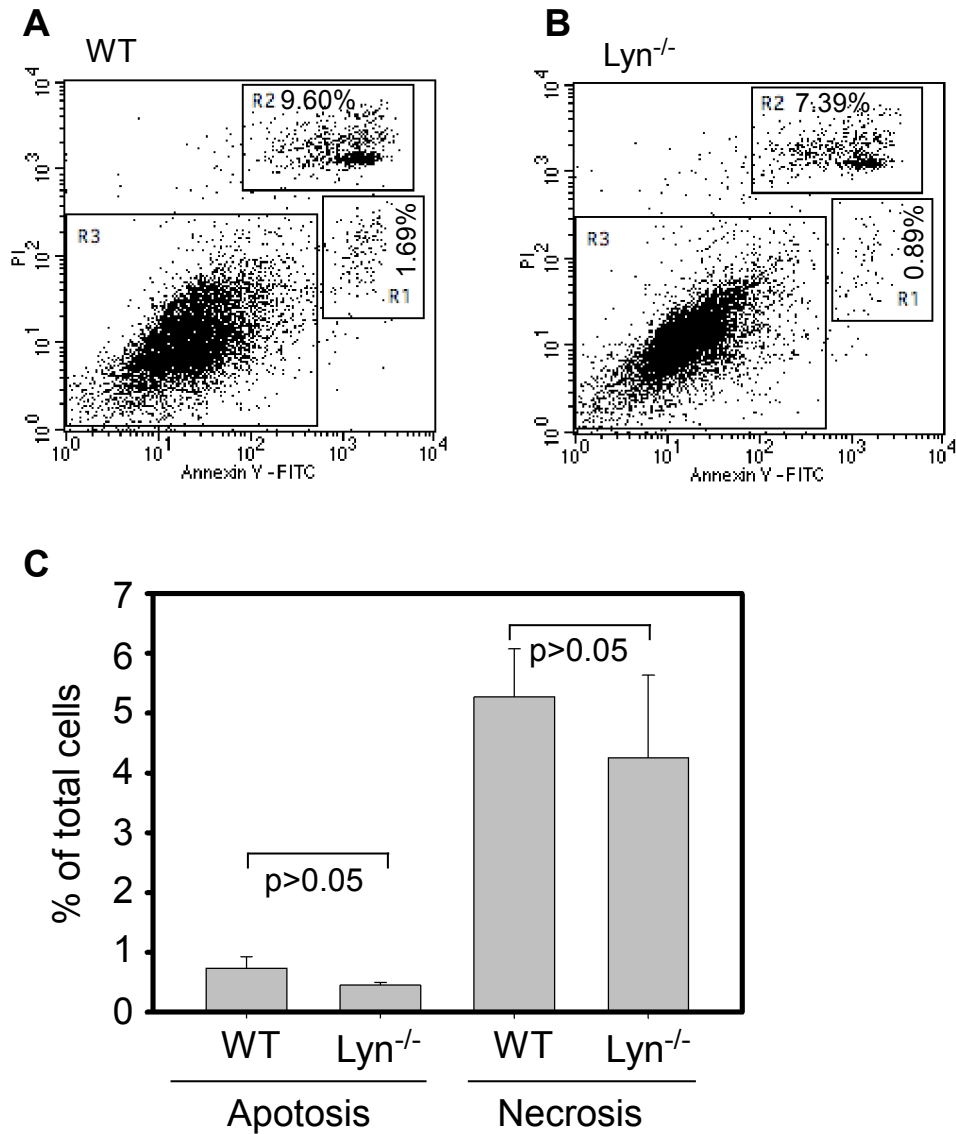


## Supplemental Figures



**Supplemental Figure S1. VE-cadherin immunostaining of isolated mouse lung endothelial cells.**



**Supplemental Figure S2. Lack of Lyn does not increase mouse lung microvascular endothelial cell necrosis or apoptosis.** **A - C**, Mouse lung microvascular endothelial cells isolated from WT (**A**) and *Lyn*<sup>-/-</sup> (**B**) mice were stained by FITC-conjugated Annexin V and propidium iodide (PI, BD Pharmingen, San Diego, CA) by following the manufacturer's instruction. All experiments were carried out on ice and completed within 1.5 hours. Values are means  $\pm$  s.d. (n=3). Statistical data from three experiments are shown (**C**). Differences between two groups were assessed using unpaired two-tailed Student's t-test. Note: The cells that are positive for both Annexin V and propidium iodide staining are necrotic cells (R2); and the cells that are Annexin V positive and PI negative are apoptotic cells (R1).