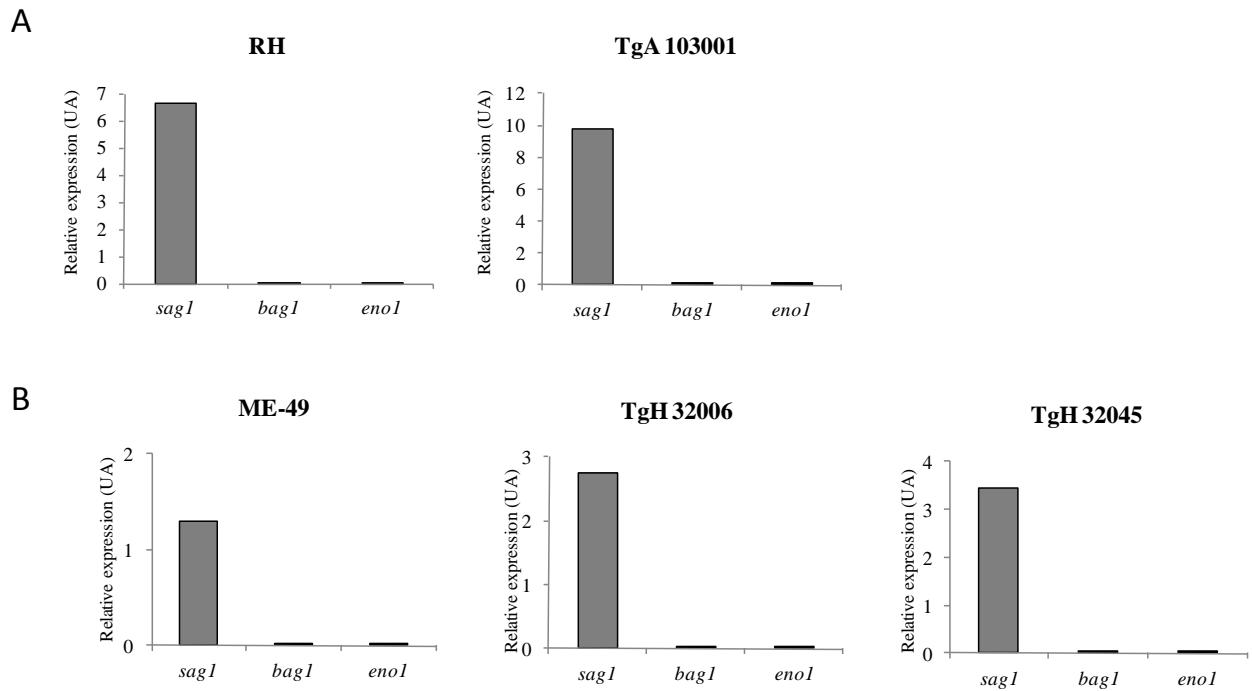


Supplemental data 1

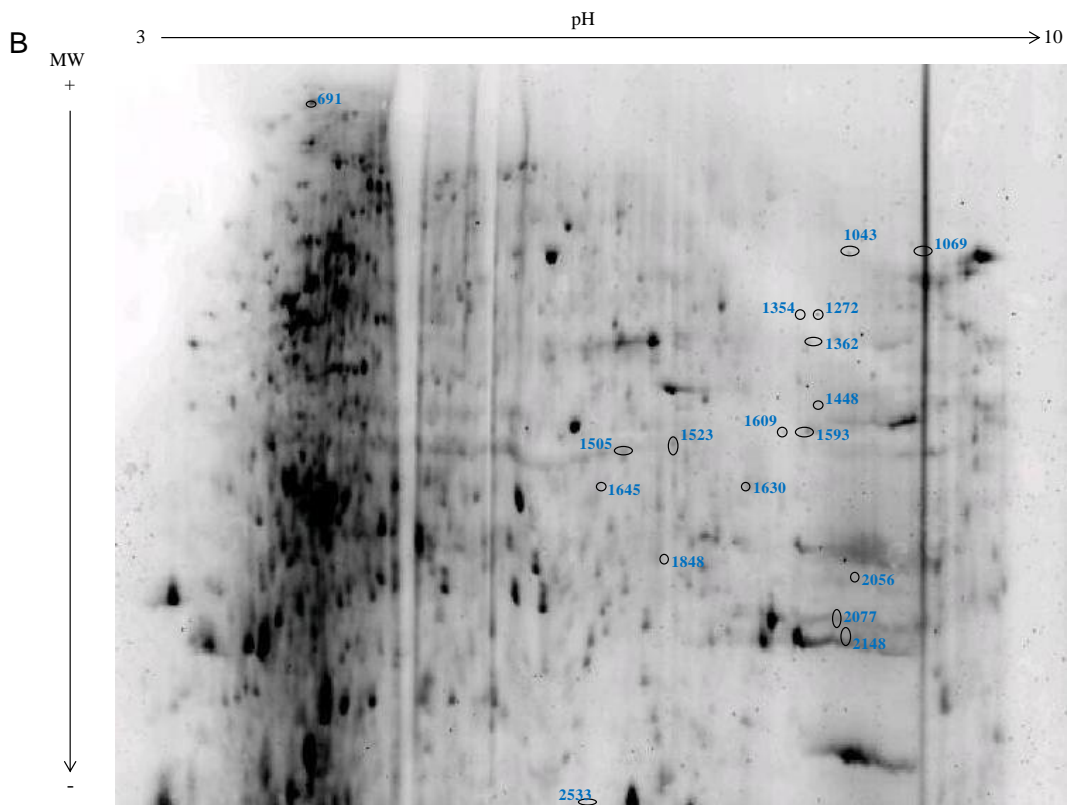
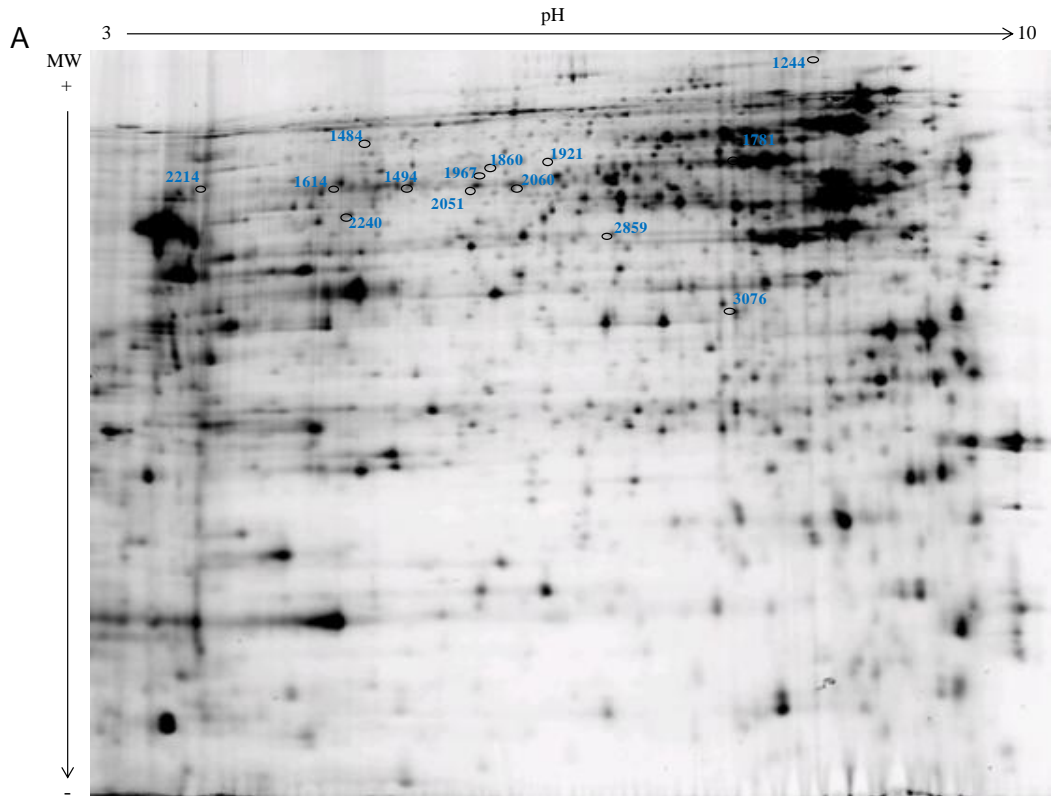


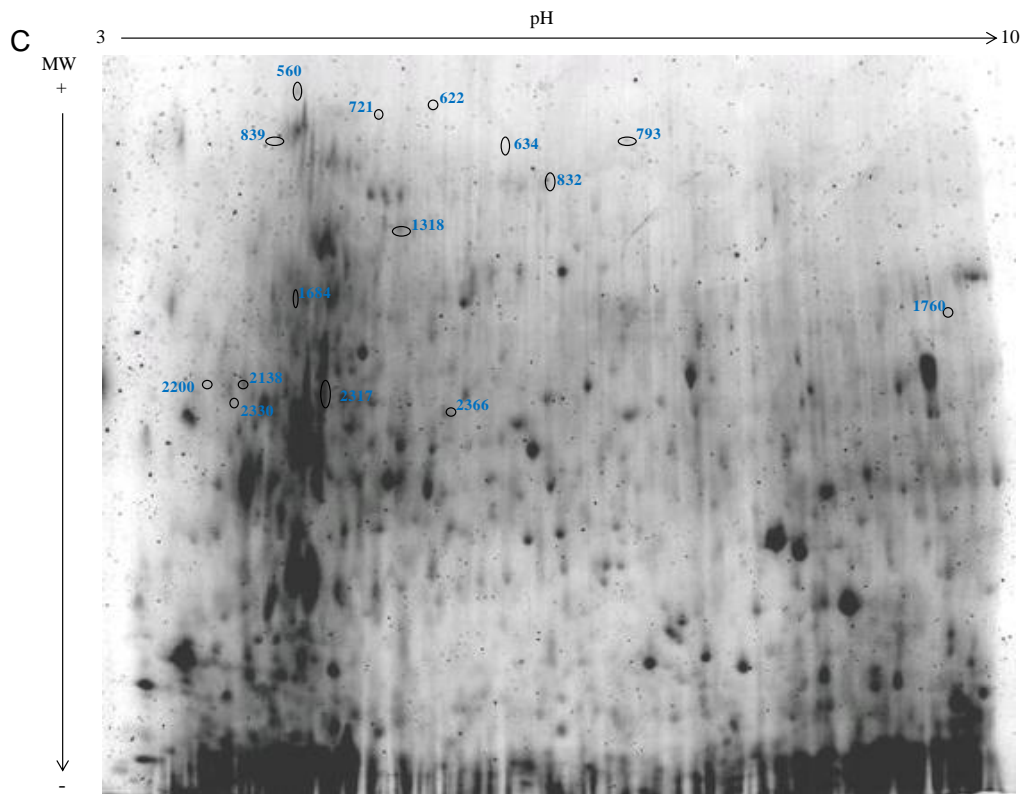
Relative expression of *T. gondii* tachyzoites markers, *sag1* gene, and bradyzoites markers, *bag1* and *eno1* genes, by real-time qRT-PCR analysis. Relative expression of *sag1*, *bag1* and *eno1* was evaluated in *T. gondii* genotype I strains (A) and genotype II strains (B). The mRNA levels of *sag1*, *bag1* and *eno1* genes were normalized to housekeeping *toxoplasma* β -*tubulin* gene. Results from one experiment representative of six experiments.

mRNA	Sense primer	Antisense primer
<i>sag1</i>	5'-ACG GGG GAT TCT GCT AGT CT-3'	5'-GGG GAA CTT CTC GAT TGG A-3'
<i>bag1</i>	5'-TGA GCG AGT GTC CGG TTA TT-3'	5'-ATT CCG TCG GGC TTG TAA T-3'
<i>eno1</i>	5'-GAG GCT CTG AAT CTC CTT GTT G-3'	5'-CTG CGT CAA ATG CGA TCT T-3'

***Sag1*, *bag1* and *eno1* sequences of primers used for qRT-PCR**

Supplemental data 2





DIGE gels of *T. gondii* tachyzoites proteins: TgA 103001/RH strains (A), TgH 32045/ME-49 (B) and TgH 32006/ME-49 (C). (A) Spots numbers are presented in Table I. (B) Spots numbers are presented in Table II. (C) Spots numbers are presented in Table 3.