

Supplemental Tables

Table SI. Hematocrit (Hct), platelet, white blood cell (WBCs) and polymorphonuclear leukocyte (PMNs) counts in untreated C57Bl/6J (WT), eNOS deficient (KO) and cross-transplanted chimeras.

Group	Hct (%)	Platelets (10^3)	WBCs (10^3)	PMNs (10^3)
Untreated				
WT	39.9 ± 0.8 n=9	1285 ± 91.9 n=8	38.0 ± 4.2 n=9	9.8 ± 0.9 n=9
KO	40.1 ± 0.8 n=7	1541 ± 88.0 n=7	39.9 ± 4.3 n=7	10.4 ± 1.0 n=7
BC+/EC+	43.9 ± 0.9 n=14	1665 ± 116.5 n=7	63.6 ± 7.2 n=10	16.1 ± 3.0 n=7
BC-/EC+	40.2 ± 2.1 n=5	1181 ± 413.0 n=2	85.5 ± 3.0 n=3	25.1 ± 1.3 [*] n=3
BC+/EC-	41.7 ± 1.2 n=12	1511 ± 69.0 n=13	49.4 ± 12.0 n=10	17.2 ± 3.3 n=10
BC-/EC-	42.6 ± 0.8 n=11	1510 ± 102.1 n=9	56.0 ± 7.7 n=5	14.3 ± 1.9 n=5

Using One-way ANOVA and Bonferroni post-hoc test: ^{*} denotes P < .05 vs WT.

Table SII. Platelet, white blood cell (WBCs) and polymorphonuclear leukocyte (PMNs) counts in BC+/EC- and BC-/EC- chimeras before and after platelet- (APS) or leukocyte-depleting (anti-CD45 Ab) treatment.

* denotes P < 0.05 and ** denotes P < 0.0001 using one-way ANOVA and Bonferroni post-hoc test.

Group	Platelets (10^3)		WBCs (10^3)		PMNs (10^3)	
	Pre	Post	Pre	Post	Pre	Post
APS						
BC+/EC- (n=5)	1557 ± 62.8	128.0 ± 17.8**		20.2 ± 5.4		9.8 ± 1.0
BC-/EC- (n=8)	1571 ± 92.4	120.0 ± 18.1**		21.2 ± 5.9		7.5 ± 0.6
Anti-CD45 Ab						
BC+/EC- (n=3)			61.7 ± 1.2	20.9 ± 8.1**	21.5 ± 3.4	10.5 ± 7.1*
BC-/EC- (n=4)			62.0 ± 6.3	10.9 ± 2.2**	16.1 ± 0.8	3.6 ± 0.4*

Using One-way ANOVA and Bonferroni post-hoc test: ^{*} denotes P < .05 and ^{**} denotes P < .0001 vs pre-treatment.

Table SIII. Baseline systolic and diastolic blood pressures of cross-transplanted eNOS^{-/-} chimeras during hours of daylight and darkness.

Group	Systolic BP		Diastolic BP	
	Day	Night	Day	Night
	AUC (mmHg)		AUC (mmHg)	
BC+/EC+ (n=4)	1111	1263	825.3	974.4
BC-/EC+ (n=3)	1263	1317	1083	1130
BC+/EC- (n=3)	1230	1415	962.1	1121
BC-/EC- (n=4)	1325	1553	1051	1219
	p-value		p-value	
BC-/EC+ vs BC+/EC+	0.0053*	0.2729	0.0006**	0.0160*
BC+/EC- vs BC-/EC-	0.0494*	0.1488	0.0385*	0.1351
BC+/EC- vs BC-/EC+	0.6026	0.0010*	0.0445*	0.7572

Day: 0600 to 1800 hours, Night: 1800 to 0600 hours. Group averages calculated for each 2 hour interval and area under the curve (AUC) by Two-way ANOVA with Bonferroni post-hoc test. * denotes p<0.05 and ** denotes p<0.005.

Supplemental Figure I

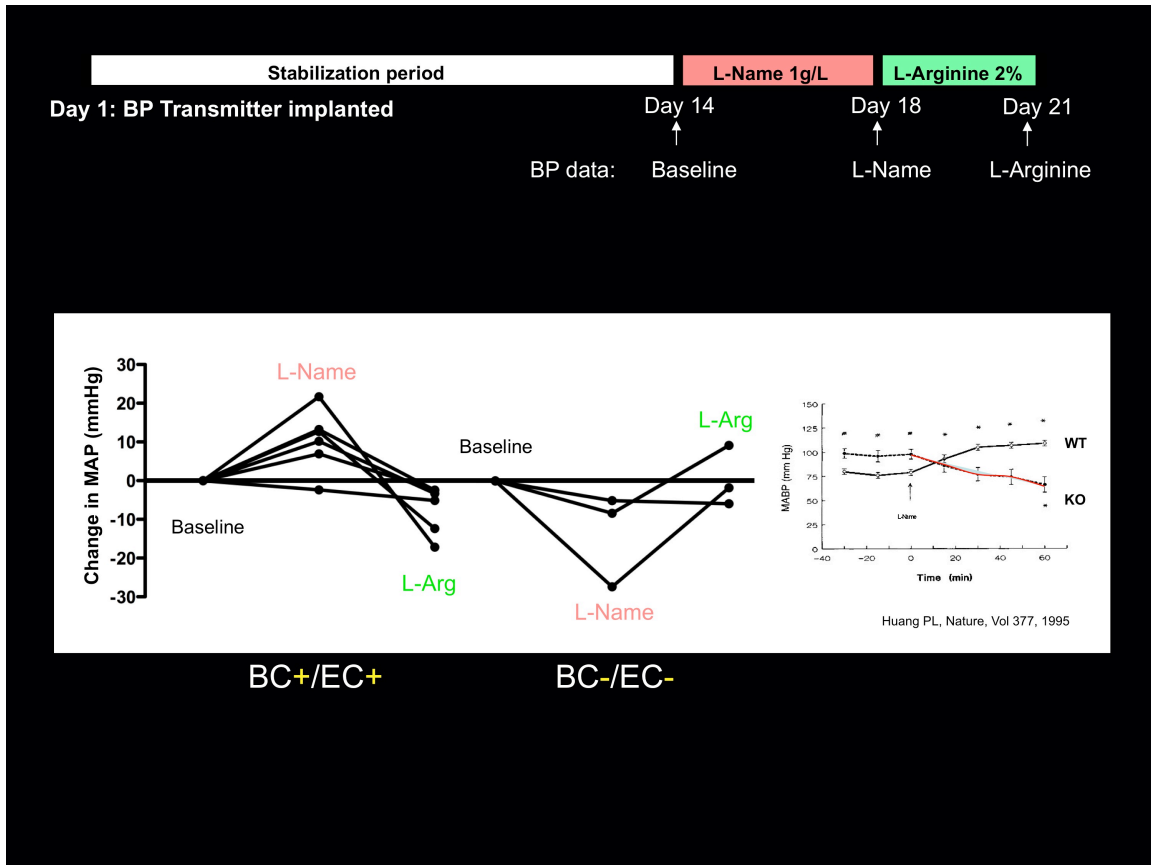


Figure SI. Paradoxical response to L-NAME of BC-/EC- mice, similar to Harvard $eNOS^{-/-}$ mice. Harvard BC+/EC+ chimeras (n = 5) and BC-/EC- chimeras (n = 3) after oral treatment with L-NAME or L-Arg. Blood pressure data for individual animals shown as solid lines. Comparison of MAP responses to L-NAME treatment by WT and Harvard eNOS KO mice, as reported by Huang et al. (inset graph).¹³