

Speech Disturbs Face Scanning in 6-Month Olds who Develop Autism Spectrum Disorder

Supplementary Information

Table S1. Sample characteristics at 6 and 24 months

Characteristic	ASD (<i>n</i> = 12)	HR-ATYP (<i>n</i> = 29)	HR-TYP (<i>n</i> = 16)	LR-TYP (<i>n</i> = 42)	<i>p</i> value
6 months					
Age (months)	6.33 (.98)	6.40 (.39)	6.39 (.43)	6.23 (.35)	.473
Male Sex (%)	67	79	56	55	.177
Mullen VR AE	6.00 (.63)	5.55 (1.55)	6.00 (.97)	6.00 (.77)	.329
Mullen FM AE	5.45 (1.44)	5.10 (1.32)	6.06 (1.34)	6.17 (1.18)	.006 ^a
Mullen RL AE	4.91 (1.30)	4.86 (1.46)	5.06 (.93)	5.37 (1.24)	.389
Mullen EL AE	4.73 (.79)	4.38 (1.05)	4.81 (.66)	4.80 (.75)	.178
24 months					
Age (months)	25.13 (2.05)	24.49 (.86)	24.29 (.63)	24.21 (.39)	.102
ADOS 1 Total	11.58 (5.35)	7.82 (3.15)	3.07 (2.28)	3.39 (2.79)	<.001 ^b
Verbal DQ	91.62 (33.4)	101.8 (21.8)	124.1 (11.5)	125.4 (16.6)	<.001 ^c
Nonverbal DQ	96.00 (21.5)	103.0 (14.5)	114.7 (10.9)	118.3 (11.2)	<.001 ^c

ASD, autism spectrum disorder; HR, high-risk infant sibling; LR, low-risk infant sibling; ATYP, infants with clinically significant symptoms (e.g., developmental delay or abnormal behavioral presentation) in the 2nd or 3rd year of life, not meeting criteria for ASD; TYP, infants with typical development in the 2nd and 3rd years of life; AE, age equivalent performance in months; VR, visual reception; FM, fine motor skills; RL, receptive language; EL, expressive language; ADOS, Autism Diagnostic Observation Schedule; Verbal DQ = 100 x [RL AE + EL AE] / (2 x Age); Nonverbal DQ = 100 x [VR AE + FM AE] / (2 x Age).

^a HR-ATYP < LR-TYP.

^b ASD < HR-ATYP < (HR-TYP = LR-TYP).

^c (ASD = HR-ATYP) < (HR-TYP = LR-TYP).

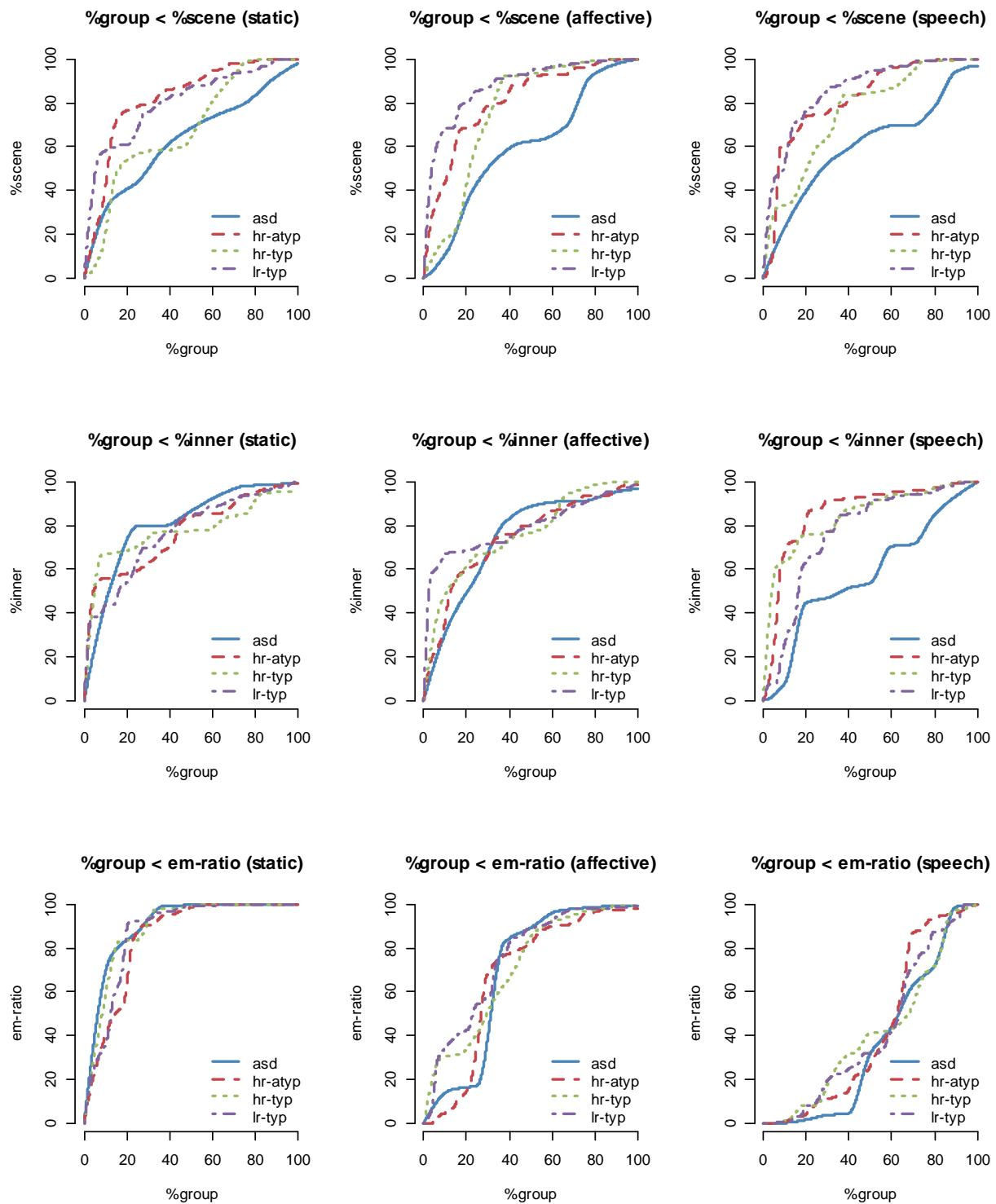


Figure S1. Proportion of each group accounted for by performance below particular values on eye-tracking outcome measures. em-ratio, eye-to-mouth ratio; see Table S1 for remaining abbreviations.