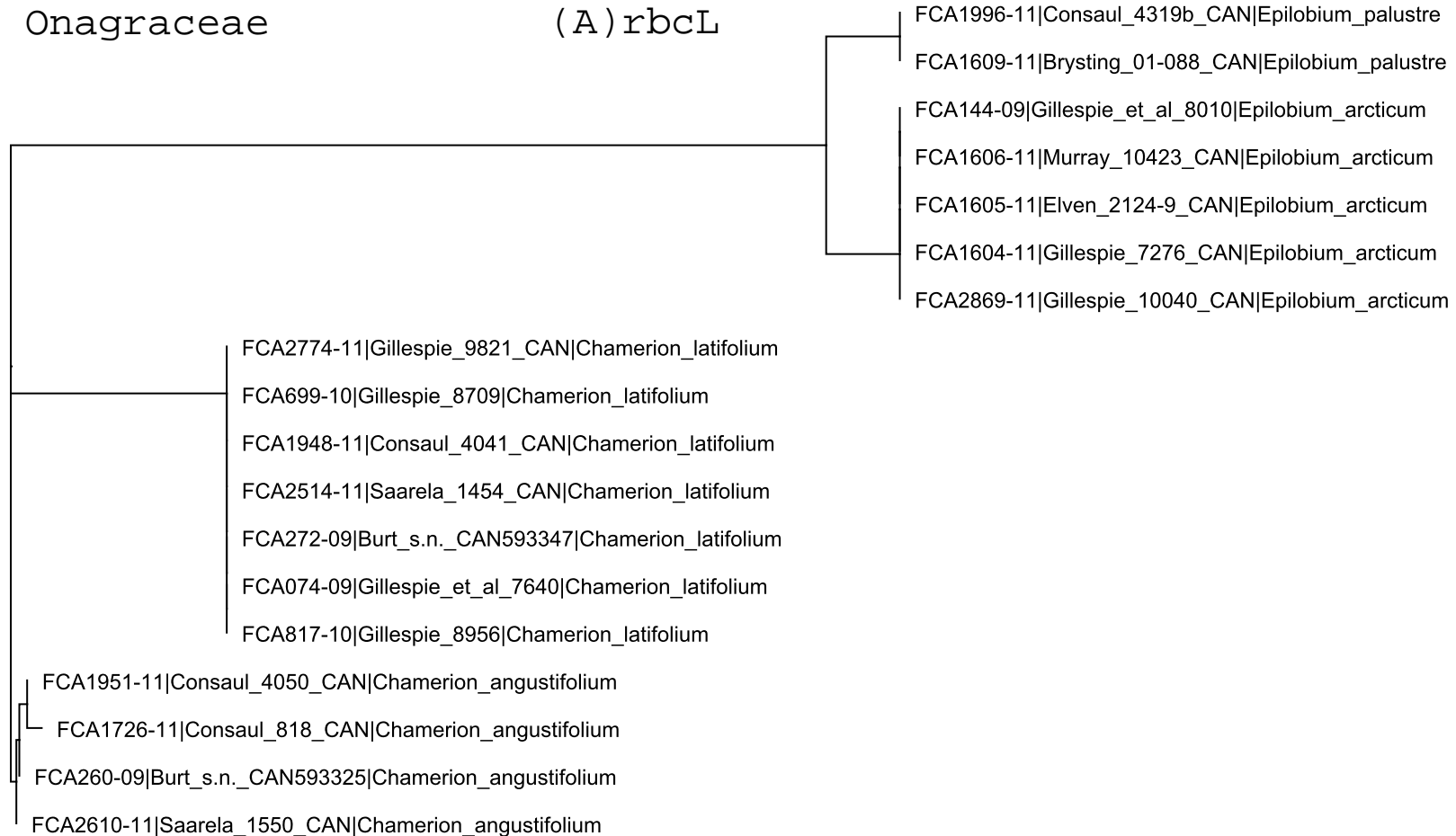


# Onagraceae

( A ) rbcL



0.0040

Onagraceae

(B) matK

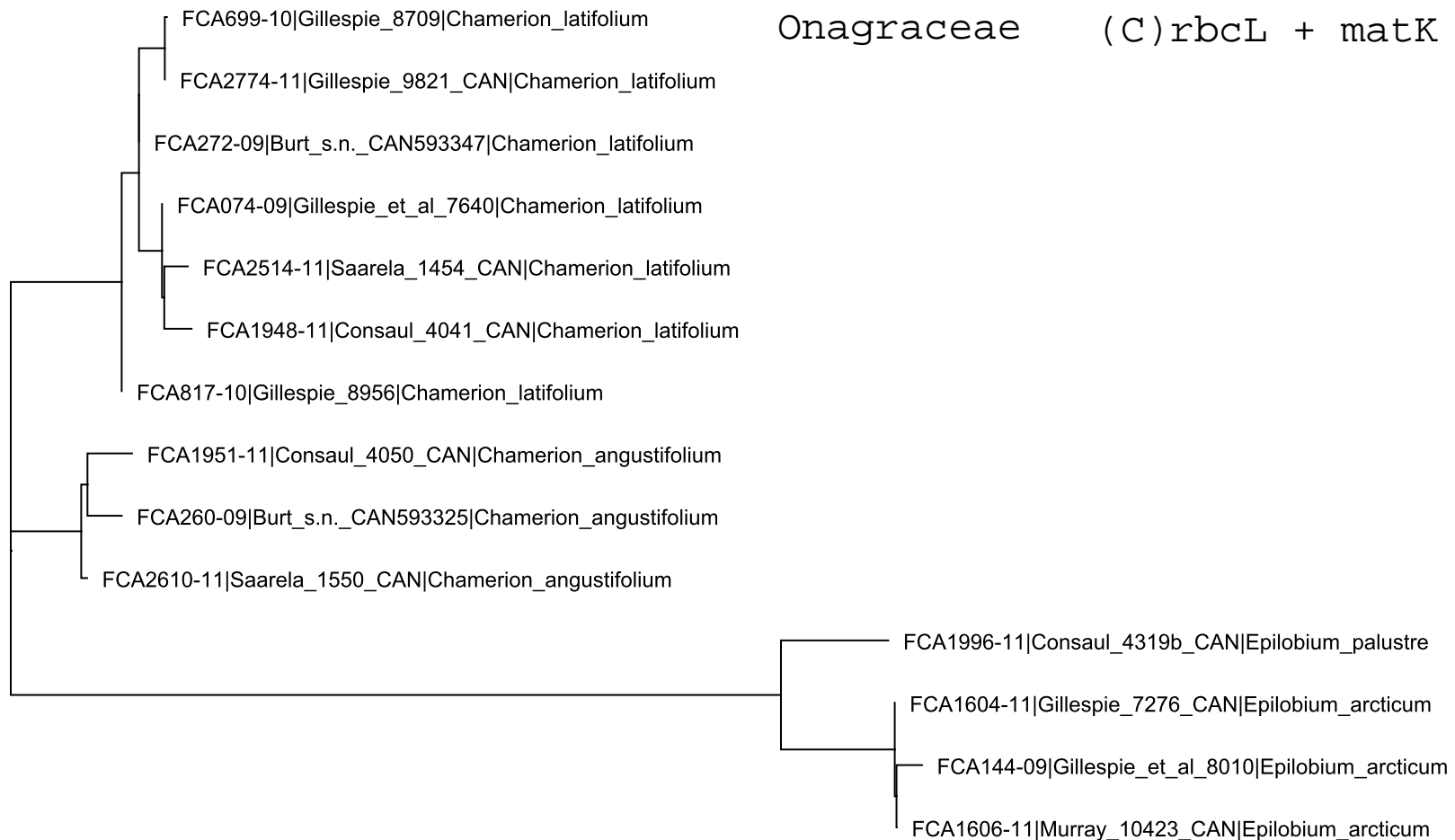
FCA1948-11|Consaul\_4041\_CAN|Chamerion\_latifolium  
FCA2514-11|Saarela\_1454\_CAN|Chamerion\_latifolium  
FCA074-09|Gillespie\_et\_al\_7640|Chamerion\_latifolium  
FCA272-09|Burt\_s.n.\_CAN593347|Chamerion\_latifolium  
FCA2774-11|Gillespie\_9821\_CAN|Chamerion\_latifolium  
FCA699-10|Gillespie\_8709|Chamerion\_latifolium  
FCA817-10|Gillespie\_8956|Chamerion\_latifolium

FCA1951-11|Consaul\_4050\_CAN|Chamerion\_angustifolium  
FCA260-09|Burt\_s.n.\_CAN593325|Chamerion\_angustifolium  
FCA2610-11|Saarela\_1550\_CAN|Chamerion\_angustifolium

FCA144-09|Gillespie\_et\_al\_8010|Epilobium\_arcticum  
FCA2289-11|Edlund\_680\_CAN|Epilobium\_arcticum  
FCA1606-11|Murray\_10423\_CAN|Epilobium\_arcticum  
FCA1604-11|Gillespie\_7276\_CAN|Epilobium\_arcticum  
FCA1996-11|Consaul\_4319b\_CAN|Epilobium\_palustre  
FCA1610-11|Brysting\_01-056\_CAN|Epilobium\_palustre

0.0060

Onagraceae (C) rbcL + matK



0.0050