

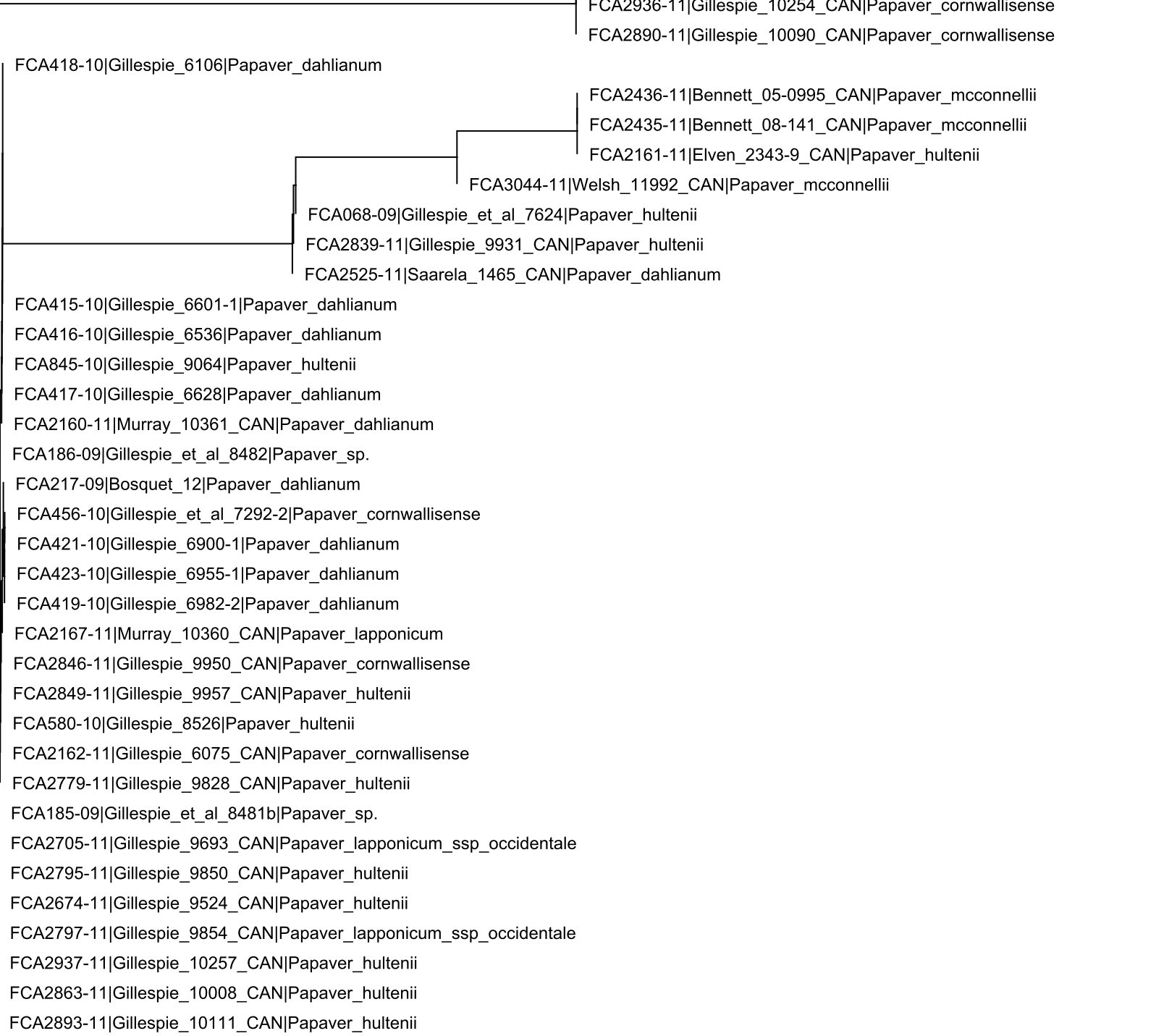
Papaveraceae (A) rbcL

FCA2792-11|Gillespie_9846_CAN|Papaver_dahlianum
 FCA420-10|Gillespie_6725|Papaver_dahlianum
 FCA2435-11|Bennett_08-141_CAN|Papaver_mcconnellii
 FCA2160-11|Murray_10361_CAN|Papaver_dahlianum
 FCA2162-11|Gillespie_6075_CAN|Papaver_cornwallisense
 FCA2705-11|Gillespie_9693_CAN|Papaver_lapponicum_ssp_occidentale
 FCA2936-11|Gillespie_10254_CAN|Papaver_cornwallisense
 FCA2851-11|Gillespie_9962_CAN|Papaver_dahlianum
 FCA2937-11|Gillespie_10257_CAN|Papaver_hultenii
 FCA2890-11|Gillespie_10090_CAN|Papaver_cornwallisense
 FCA2846-11|Gillespie_9950_CAN|Papaver_cornwallisense
 FCA2674-11|Gillespie_9524_CAN|Papaver_hultenii
 FCA090-09|Gillespie_et_al_7713|Papaver_hultenii
 FCA2436-11|Bennett_05-0995_CAN|Papaver_mcconnellii
 FCA418-10|Gillespie_6106|Papaver_dahlianum
 FCA3044-11|Welsh_11992_CAN|Papaver_mcconnellii
 FCA2161-11|Elven_2343-9_CAN|Papaver_hultenii
 FCA421-10|Gillespie_6900-1|Papaver_dahlianum
 FCA416-10|Gillespie_6536|Papaver_dahlianum
 FCA424-10|Gillespie_6815-1|Papaver_dahlianum
 FCA419-10|Gillespie_6982-2|Papaver_dahlianum
 FCA2163-11|Gillett_18194_CAN|Papaver_cornwallisense
 FCA2863-11|Gillespie_10008_CAN|Papaver_hultenii
 FCA580-10|Gillespie_8526|Papaver_hultenii
 FCA2166-11|Edlund_12806_CAN|Papaver_cf._lapponicum
 FCA2839-11|Gillespie_9931_CAN|Papaver_hultenii
 FCA2706-11|Gillespie_9694_CAN|Papaver_dahlianum
 FCA2788-11|Gillespie_9840_CAN|Papaver_cornwallisense
 FCA2704-11|Gillespie_9692_CAN|Papaver_cornwallisense
 FCA2525-11|Saarela_1465_CAN|Papaver_dahlianum
 FCA2167-11|Murray_10360_CAN|Papaver_lapponicum
 FCA2164-11|Aiken_99-065_CAN|Papaver_cornwallisense
 FCA068-09|Gillespie_et_al_7624|Papaver_hultenii
 FCA2686-11|Gillespie_9636_CAN|Papaver_cornwallisense

FCA415-10|Gillespie_6601-1|Papaver_dahlianum
 FCA2797-11|Gillespie_9854_CAN|Papaver_lapponicum_ssp_occidentale
 FCA423-10|Gillespie_6955-1|Papaver_dahlianum
 FCA2795-11|Gillespie_9850_CAN|Papaver_hultenii
 FCA186-09|Gillespie_et_al_8482|Papaver_sp.
 FCA417-10|Gillespie_6628|Papaver_dahlianum
 FCA185-09|Gillespie_et_al_8481b|Papaver_sp.
 FCA217-09|Bosquet_12|Papaver_dahlianum
 FCA456-10|Gillespie_et_al_7292-2|Papaver_cornwallisense
 FCA2779-11|Gillespie_9828_CAN|Papaver_hultenii

Papaveraceae (B) matK

FCA2686-11|Gillespie_9636_CAN|Papaver_cornwallisense
 FCA2164-11|Aiken_99-065_CAN|Papaver_cornwallisense
 FCA2163-11|Gillett_18194_CAN|Papaver_cornwallisense
 FCA424-10|Gillespie_6815-1|Papaver_dahlianum
 FCA2706-11|Gillespie_9694_CAN|Papaver_dahlianum
 FCA2704-11|Gillespie_9692_CAN|Papaver_cornwallisense
 FCA2788-11|Gillespie_9840_CAN|Papaver_cornwallisense
 FCA2851-11|Gillespie_9962_CAN|Papaver_dahlianum
 FCA2679-11|Gillespie_9573_CAN|Papaver_lapponicum_ssp_occidentale
 FCA2166-11|Edlund_12806_CAN|Papaver_cf._lapponicum
 FCA090-09|Gillespie_et_al_7713|Papaver_hultenii
 FCA2792-11|Gillespie_9846_CAN|Papaver_dahlianum
 FCA2936-11|Gillespie_10254_CAN|Papaver_cornwallisense
 FCA2890-11|Gillespie_10090_CAN|Papaver_cornwallisense



Papaveraceae (C)rbcL + matK

FCA424-10|Gillespie_6815-1|Papaver_dahlianum
 FCA2163-11|Gillett_18194_CAN|Papaver_cornwallisense
 FCA2164-11|Aiken_99-065_CAN|Papaver_cornwallisense
 FCA2851-11|Gillespie_9962_CAN|Papaver_dahlianum
 FCA2890-11|Gillespie_10090_CAN|Papaver_cornwallisense
 FCA2936-11|Gillespie_10254_CAN|Papaver_cornwallisense
 FCA2706-11|Gillespie_9694_CAN|Papaver_dahlianum
 FCA090-09|Gillespie_et_al_7713|Papaver_hultenii
 FCA2686-11|Gillespie_9636_CAN|Papaver_cornwallisense
 FCA2166-11|Edlund_12806_CAN|Papaver_cf._lapponicum
 FCA2788-11|Gillespie_9840_CAN|Papaver_cornwallisense
 FCA2792-11|Gillespie_9846_CAN|Papaver_dahlianum
 FCA2704-11|Gillespie_9692_CAN|Papaver_cornwallisense

FCA421-10|Gillespie_6900-1|Papaver_dahlianum
 FCA419-10|Gillespie_6982-2|Papaver_dahlianum
 FCA2167-11|Murray_10360_CAN|Papaver_lapponicum
 FCA2937-11|Gillespie_10257_CAN|Papaver_hultenii
 FCA2674-11|Gillespie_9524_CAN|Papaver_hultenii

FCA2525-11|Saarela_1465_CAN|Papaver_dahlianum
 FCA2161-11|Elven_2343-9_CAN|Papaver_hultenii
 FCA2435-11|Bennett_08-141_CAN|Papaver_mcconnellii
 FCA2436-11|Bennett_05-0995_CAN|Papaver_mcconnellii
 FCA3044-11|Welsh_11992_CAN|Papaver_mcconnellii
 FCA068-09|Gillespie_et_al_7624|Papaver_hultenii
 FCA2839-11|Gillespie_9931_CAN|Papaver_hultenii

FCA416-10|Gillespie_6536|Papaver_dahlianum
 FCA2160-11|Murray_10361_CAN|Papaver_dahlianum
 FCA418-10|Gillespie_6106|Papaver_dahlianum
 FCA2705-11|Gillespie_9693_CAN|Papaver_lapponicum_ssp_occidentale
 FCA2162-11|Gillespie_6075_CAN|Papaver_cornwallisense
 FCA2846-11|Gillespie_9950_CAN|Papaver_cornwallisense
 FCA580-10|Gillespie_8526|Papaver_hultenii

FCA185-09|Gillespie_et_al_8481b|Papaver_sp.
 FCA417-10|Gillespie_6628|Papaver_dahlianum
 FCA423-10|Gillespie_6955-1|Papaver_dahlianum
 FCA456-10|Gillespie_et_al_7292-2|Papaver_cornwallisense
 FCA217-09|Bosquet_12|Papaver_dahlianum
 FCA415-10|Gillespie_6601-1|Papaver_dahlianum
 FCA2797-11|Gillespie_9854_CAN|Papaver_lapponicum_ssp_occidentale
 FCA186-09|Gillespie_et_al_8482|Papaver_sp.
 FCA2795-11|Gillespie_9850_CAN|Papaver_hultenii
 FCA2779-11|Gillespie_9828_CAN|Papaver_hultenii

3.0E-4