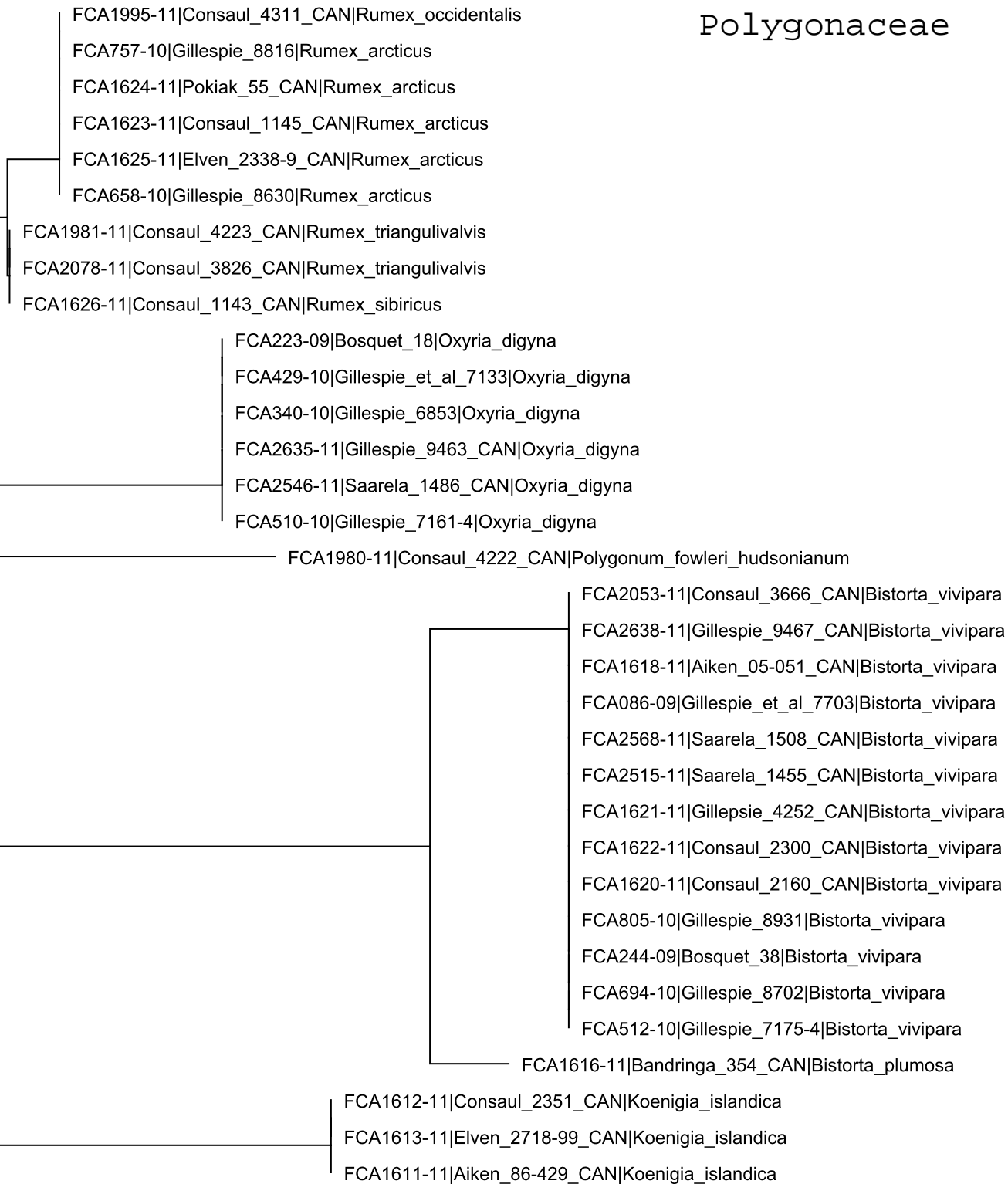


(A) rbcL

Polygonaceae



0.0050

Polygonaceae

(B) matK

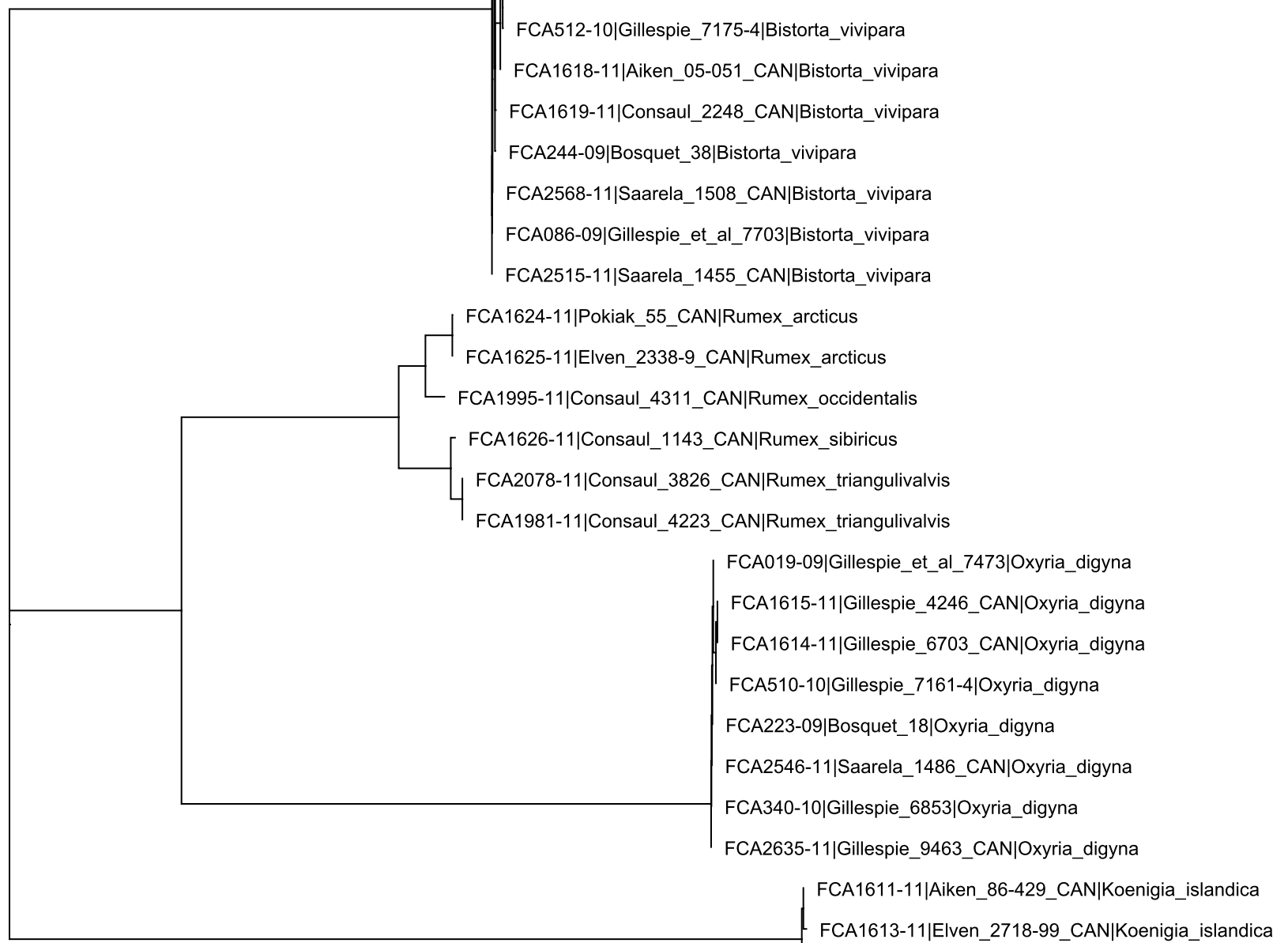
FCA1617-11|Elven_2076-9_CAN|Bistorta_plumosa
FCA1616-11|Bandringa_354_CAN|Bistorta_plumosa
FCA805-10|Gillespie_8931|Bistorta_vivipara
FCA2053-11|Consaul_3666_CAN|Bistorta_vivipara
FCA1621-11|Gillepsie_4252_CAN|Bistorta_vivipara
FCA2638-11|Gillespie_9467_CAN|Bistorta_vivipara
FCA512-10|Gillespie_7175-4|Bistorta_vivipara
FCA1618-11|Aiken_05-051_CAN|Bistorta_vivipara
FCA1619-11|Consaul_2248_CAN|Bistorta_vivipara
FCA244-09|Bosquet_38|Bistorta_vivipara
FCA2568-11|Saarela_1508_CAN|Bistorta_vivipara
FCA086-09|Gillespie_et_al_7703|Bistorta_vivipara
FCA2515-11|Saarela_1455_CAN|Bistorta_vivipara

FCA1624-11|Pokiak_55_CAN|Rumex_arcticus
FCA1625-11|Elven_2338-9_CAN|Rumex_arcticus
FCA1995-11|Consaul_4311_CAN|Rumex_occidentalis
FCA1626-11|Consaul_1143_CAN|Rumex_sibiricus
FCA2078-11|Consaul_3826_CAN|Rumex_triangulivalvis
FCA1981-11|Consaul_4223_CAN|Rumex_triangulivalvis

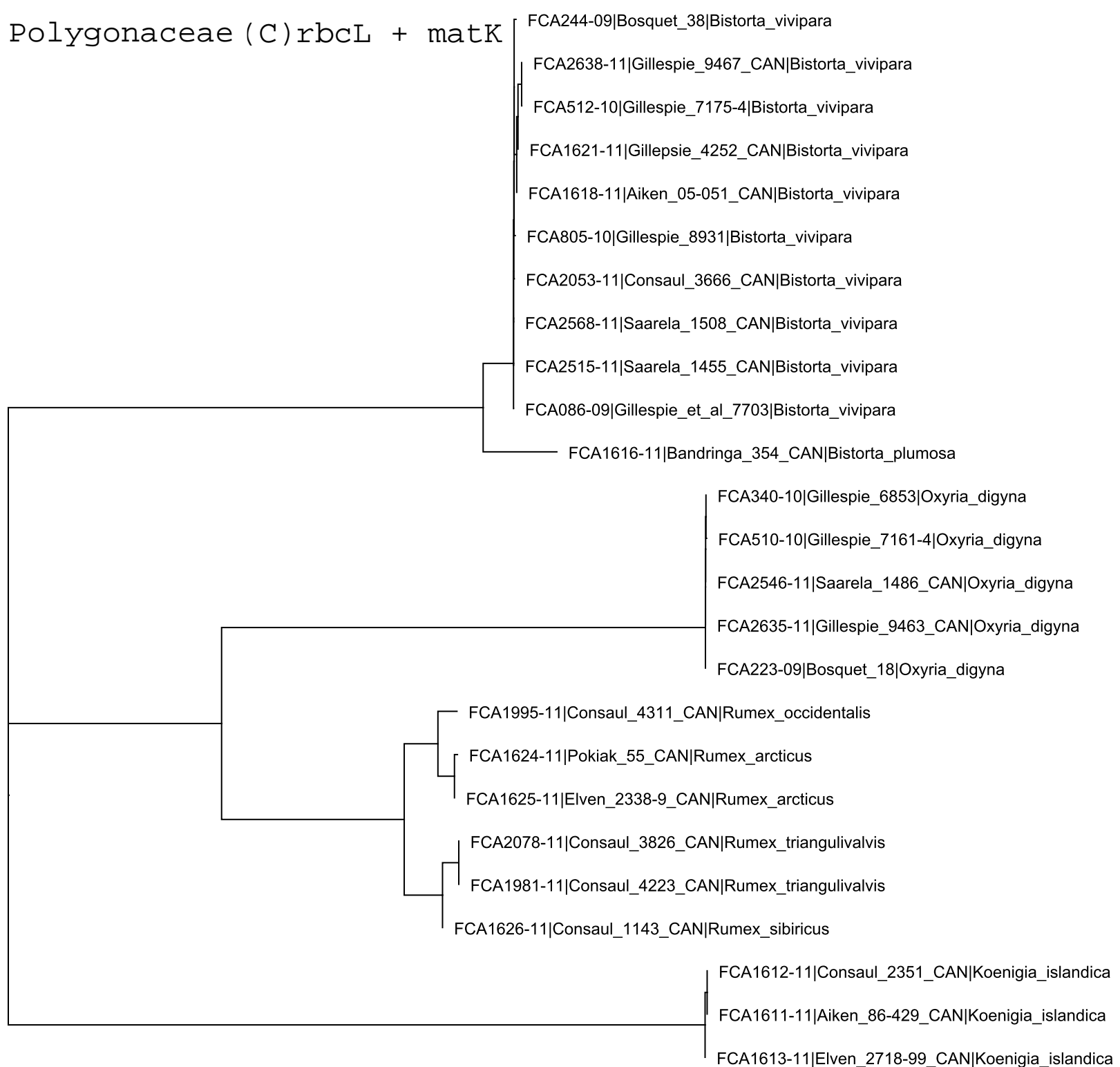
FCA019-09|Gillespie_et_al_7473|Oxyria_digyna
FCA1615-11|Gillespie_4246_CAN|Oxyria_digyna
FCA1614-11|Gillespie_6703_CAN|Oxyria_digyna
FCA510-10|Gillespie_7161-4|Oxyria_digyna
FCA223-09|Bosquet_18|Oxyria_digyna
FCA2546-11|Saarela_1486_CAN|Oxyria_digyna
FCA340-10|Gillespie_6853|Oxyria_digyna
FCA2635-11|Gillespie_9463_CAN|Oxyria_digyna

FCA1611-11|Aiken_86-429_CAN|Koenigia_islandica
FCA1613-11|Elven_2718-99_CAN|Koenigia_islandica
FCA1612-11|Consaul_2351_CAN|Koenigia_islandica

0.02



Polygonaceae (C) rbcL + matK



0.0080