

Primulaceae (A) rbcL

FCA2983-11|Gillespie_7200_CAN|Androsace_chamaejasme_ssp_andersonii
 FCA721-10|Gillespie_8744|Androsace_chamaejasme_ssp_andersonii
 FCA2420-11|Harris_3648_CAN|Androsace_chamaejasme_ssp_andersonii
 FCA589-10|Gillespie_8537|Androsace_chamaejasme_ssp_andersonii
 FCA2719-11|Gillespie_9716_CAN|Androsace_chamaejasme_ssp_andersonii
 FCA067-09|Gillespie_et_al_7622|Androsace_chamaejasme_ssp_andersonii
 FCA2419-11|Elven_2292-9_CAN|Androsace_chamaejasme_ssp_andersonii
 FCA2421-11|Elven_2403-9_CAN|Androsace_chamaejasme_ssp_andersonii
 FCA2498-11|Saarela_1438_CAN|Androsace_chamaejasme_ssp_andersonii

FCA039-09|Gillespie_et_al_7524|Androsace_septentrionalis
 FCA2286-11|Aikne_99-052_CAN|Androsace_septentrionalis
 FCA2533-11|Saarela_1473_CAN|Androsace_septentrionalis
 FCA2067-11|Consaul_3712_CAN|Androsace_septentrionalis
 FCA778-10|Gillespie_8855|Androsace_septentrionalis
 FCA2157-11|Gillespie_5947_CAN|Androsace_septentrionalis
 FCA2857-11|Gillespie_9986_CAN|Androsace_septentrionalis
 FCA2156-11|Tremblay_82-2004_CAN|Androsace_septentrionalis

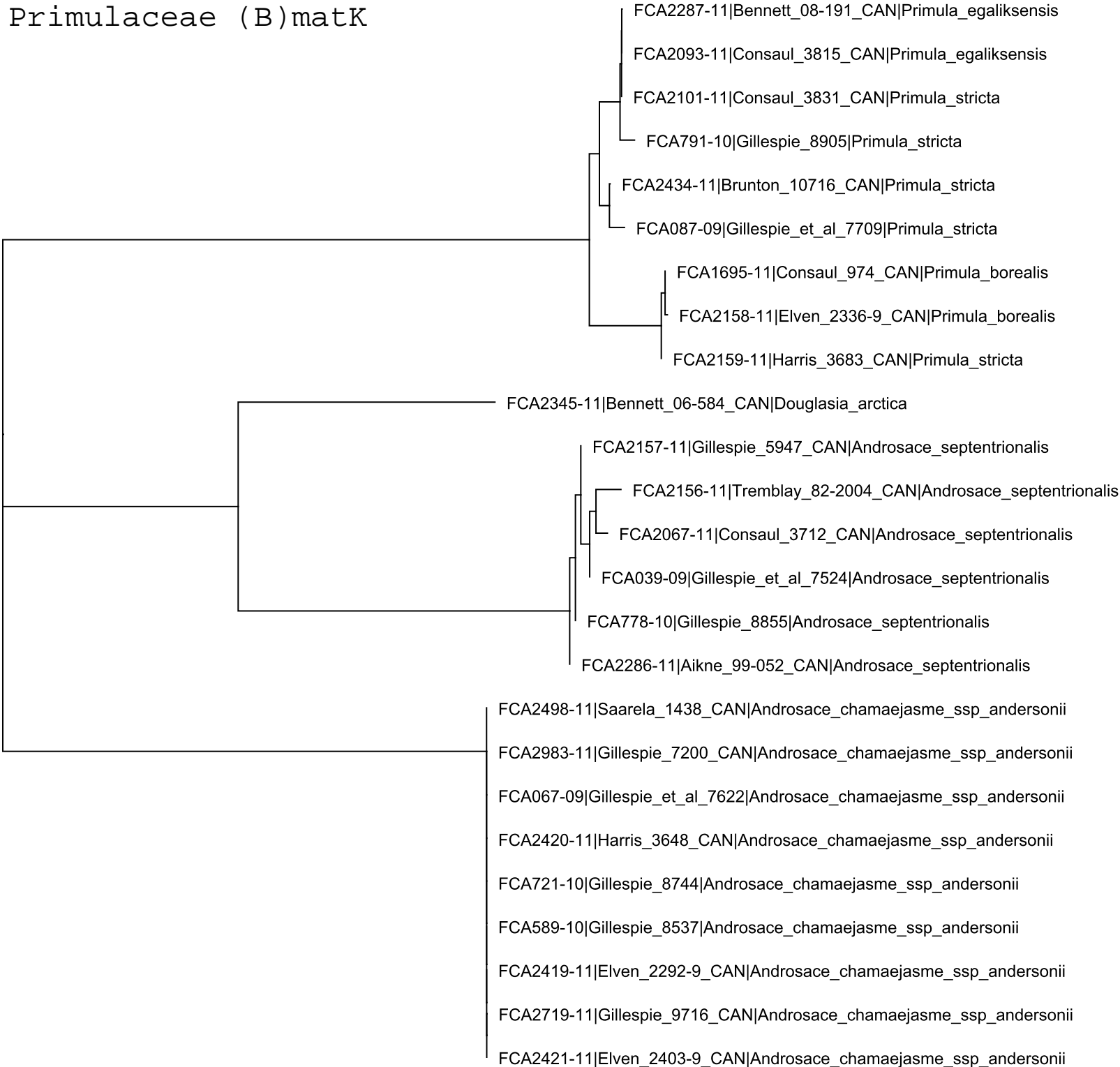
FCA2345-11|Bennett_06-584_CAN|Douglasia_arctica

FCA2159-11|Harris_3683_CAN|Primula_stricta
 FCA2158-11|Elven_2336-9_CAN|Primula_borealis
 FCA1695-11|Consaul_974_CAN|Primula_borealis

FCA791-10|Gillespie_8905|Primula_stricta
 FCA2287-11|Bennett_08-191_CAN|Primula_egalikensis
 FCA622-10|Gillespie_8574|Primula_stricta
 FCA2101-11|Consaul_3831_CAN|Primula_stricta
 FCA2093-11|Consaul_3815_CAN|Primula_egalikensis
 FCA2434-11|Brunton_10716_CAN|Primula_stricta
 FCA087-09|Gillespie_et_al_7709|Primula_stricta

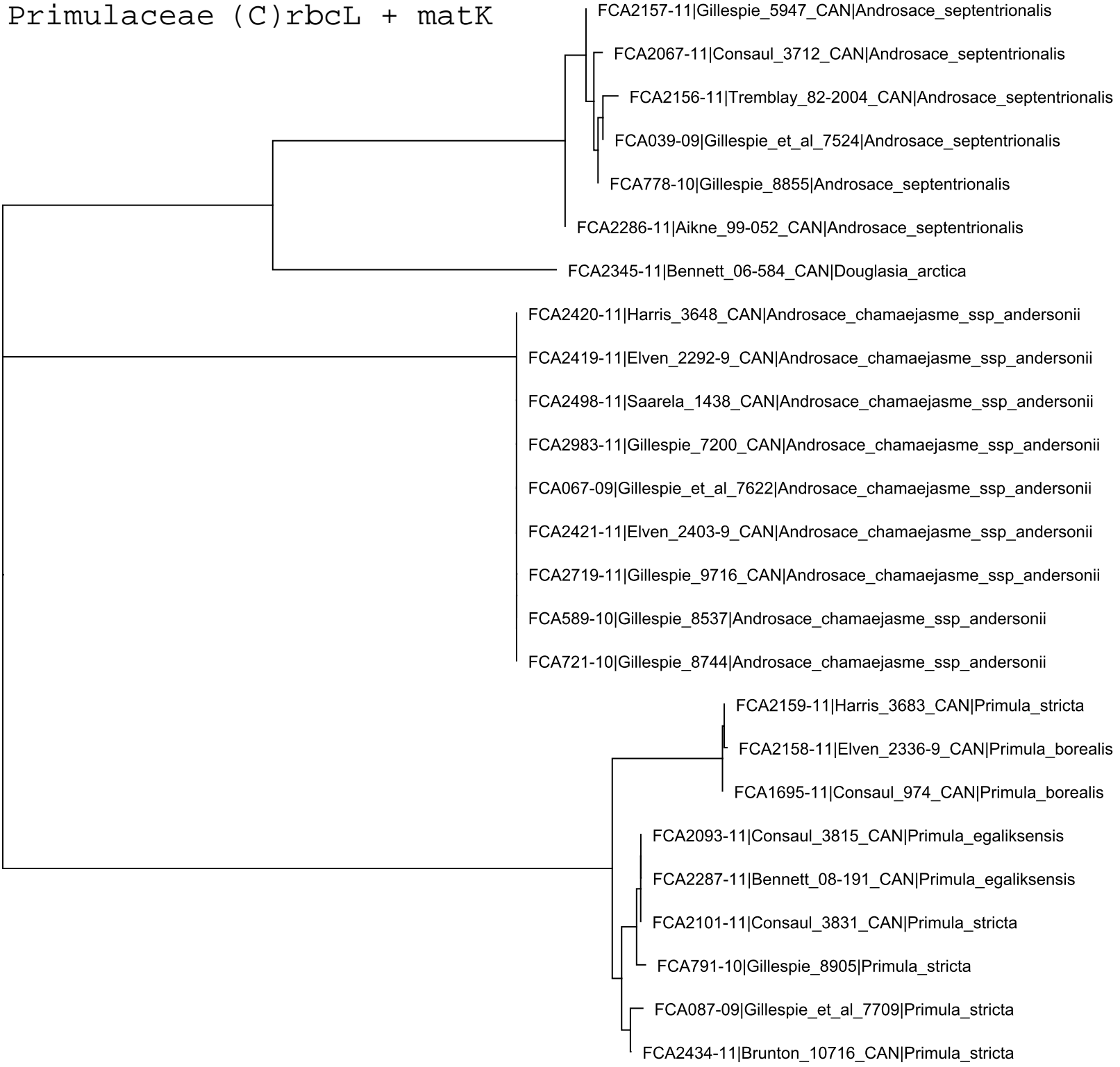
0.0040

Primulaceae (B)matK



0.01

Primulaceae (C)rbcL + matK



0.0070