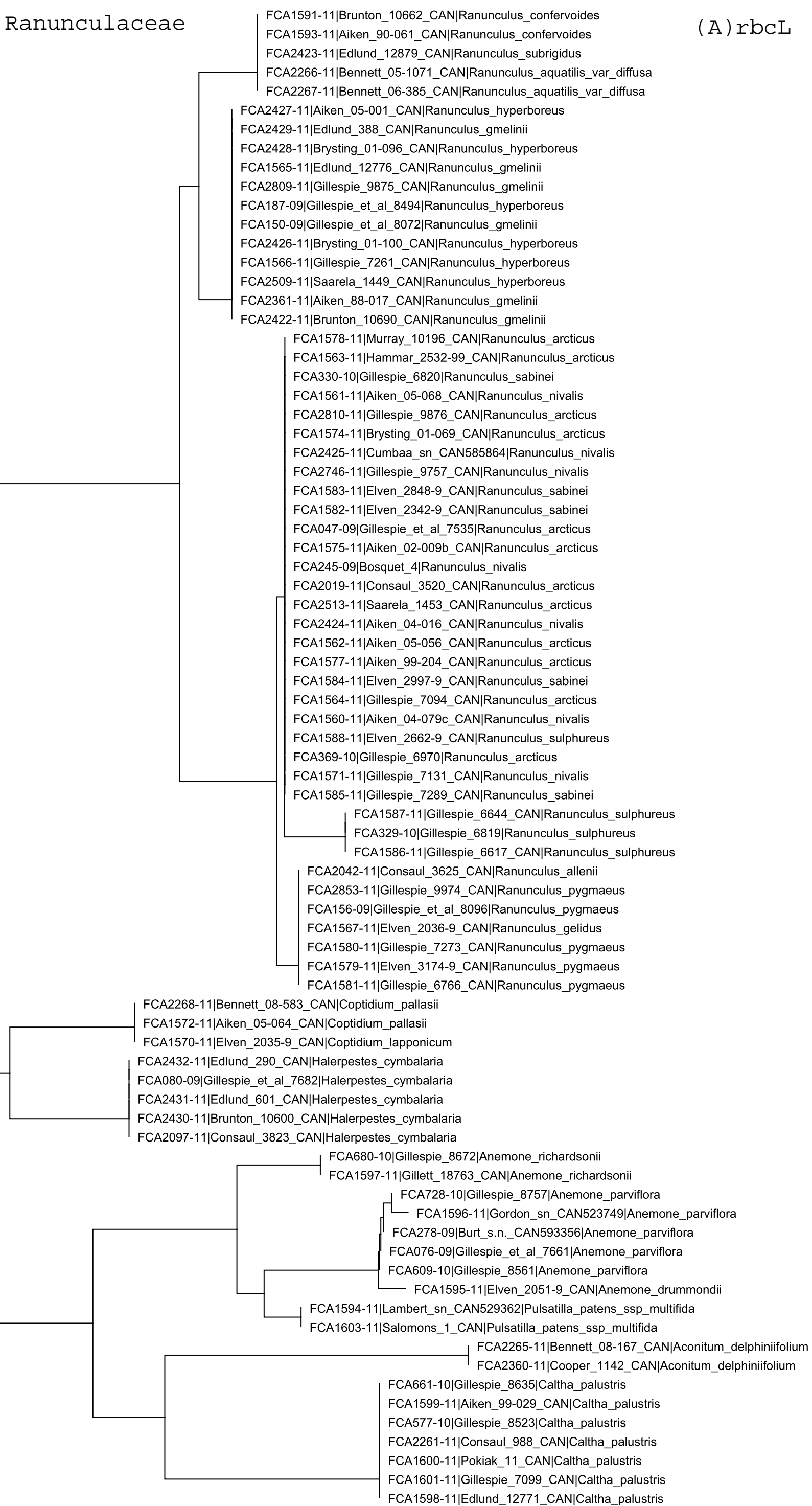


Ranunculaceae

(A) rbcL



0.0050

# Ranunculaceae

(B) matK

FCA1943-11|Consaul\_4021\_CAN|Coptidium\_lapponicum

FCA369-10|Gillespie\_6970|Ranunculus\_arcticus  
 FCA2019-11|Consaul\_3520\_CAN|Ranunculus\_arcticus  
 FCA2810-11|Gillespie\_9876\_CAN|Ranunculus\_arcticus  
 FCA047-09|Gillespie\_et\_al\_7535|Ranunculus\_arcticus  
 FCA1577-11|Aiken\_99-204\_CAN|Ranunculus\_arcticus

FCA329-10|Gillespie\_6819|Ranunculus\_sulphureus

FCA1579-11|Elven\_3174-9\_CAN|Ranunculus\_pygmaeus  
 FCA2853-11|Gillespie\_9974\_CAN|Ranunculus\_pygmaeus  
 FCA1580-11|Gillespie\_7273\_CAN|Ranunculus\_pygmaeus  
 FCA2042-11|Consaul\_3625\_CAN|Ranunculus\_allenii

FCA1585-11|Gillespie\_7289\_CAN|Ranunculus\_sabinei  
 FCA330-10|Gillespie\_6820|Ranunculus\_sabinei  
 FCA1583-11|Elven\_2848-9\_CAN|Ranunculus\_sabinei  
 FCA1582-11|Elven\_2342-9\_CAN|Ranunculus\_sabinei

FCA1561-11|Aiken\_05-068\_CAN|Ranunculus\_nivalis

FCA2509-11|Saarela\_1449\_CAN|Ranunculus\_hyperboreus

FCA150-09|Gillespie\_et\_al\_8072|Ranunculus\_gmelinii  
 FCA1566-11|Gillespie\_7261\_CAN|Ranunculus\_hyperboreus  
 FCA2428-11|Brysting\_01-096\_CAN|Ranunculus\_hyperboreus  
 FCA187-09|Gillespie\_et\_al\_8494|Ranunculus\_hyperboreus

FCA2809-11|Gillespie\_9875\_CAN|Ranunculus\_gmelinii  
 FCA2426-11|Brysting\_01-100\_CAN|Ranunculus\_hyperboreus  
 FCA1565-11|Edlund\_12776\_CAN|Ranunculus\_gmelinii

FCA2267-11|Bennett\_06-385\_CAN|Ranunculus\_aquatilis\_var\_diffusa

FCA2266-11|Bennett\_05-1071\_CAN|Ranunculus\_aquatilis\_var\_diffusa

FCA2423-11|Edlund\_12879\_CAN|Ranunculus\_subrigidus

FCA1592-11|Brunton\_10707\_CAN|Ranunculus\_confervoides

FCA1593-11|Aiken\_90-061\_CAN|Ranunculus\_confervoides

FCA2097-11|Consaul\_3823\_CAN|Halorpestes\_cymbalaria

FCA1595-11|Elven\_2051-9\_CAN|Anemone\_drummondii

FCA609-10|Gillespie\_8561|Anemone\_parviflora

FCA728-10|Gillespie\_8757|Anemone\_parviflora

FCA076-09|Gillespie\_et\_al\_7661|Anemone\_parviflora

FCA278-09|Burt\_s.n.\_CAN593356|Anemone\_parviflora

FCA2781-11|Gillespie\_9830\_CAN|Anemone\_parviflora

FCA1602-11|Gillett\_18756\_CAN|Pulsatilla\_patens\_ssp\_multifida

FCA1603-11|Salomons\_1\_CAN|Pulsatilla\_patens\_ssp\_multifida

FCA1594-11|Lambert\_sn\_CAN529362|Pulsatilla\_patens\_ssp\_multifida

FCA680-10|Gillespie\_8672|Anemone\_richardsonii

FCA2265-11|Bennett\_08-167\_CAN|Aconitum\_delphiniifolium

FCA2360-11|Cooper\_1142\_CAN|Aconitum\_delphiniifolium

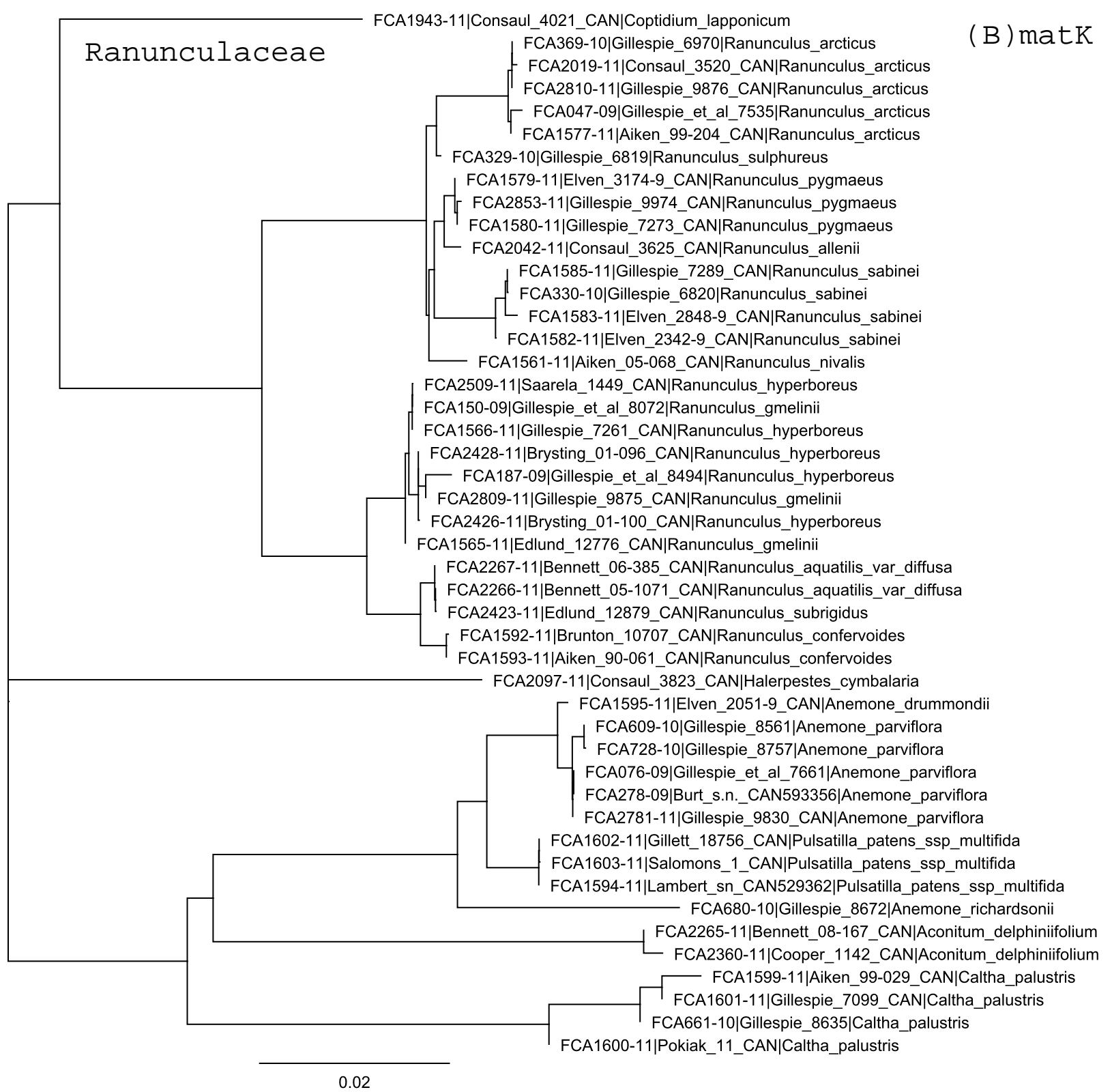
FCA1599-11|Aiken\_99-029\_CAN|Caltha\_palustris

FCA1601-11|Gillespie\_7099\_CAN|Caltha\_palustris

FCA661-10|Gillespie\_8635|Caltha\_palustris

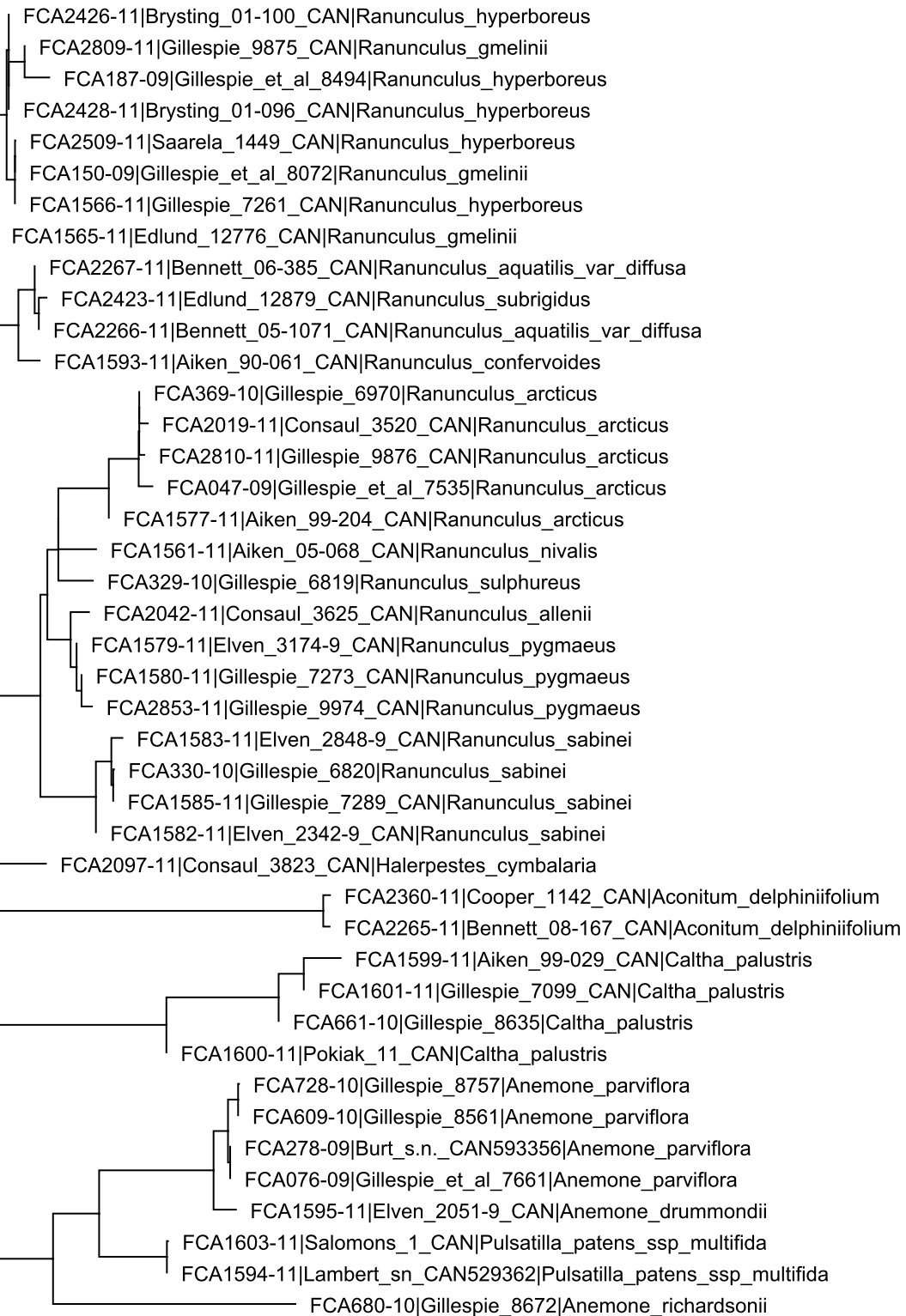
FCA1600-11|Pokiak\_11\_CAN|Caltha\_palustris

0.02



# Ranunculaceae

(C)rbcL + matK



0.0090