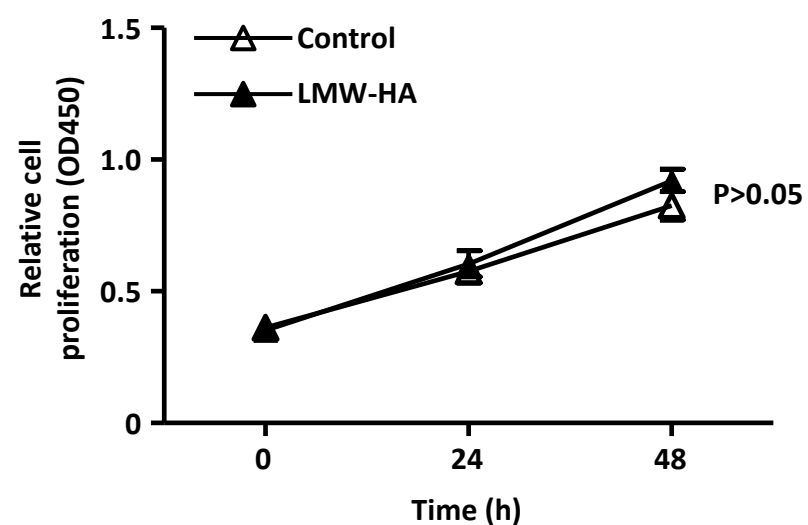
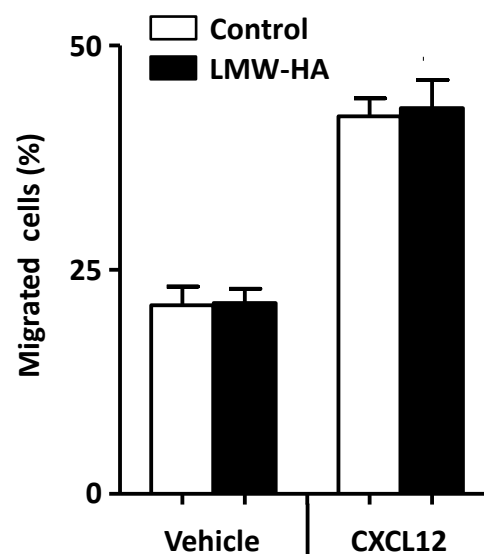


Supplemental Figure

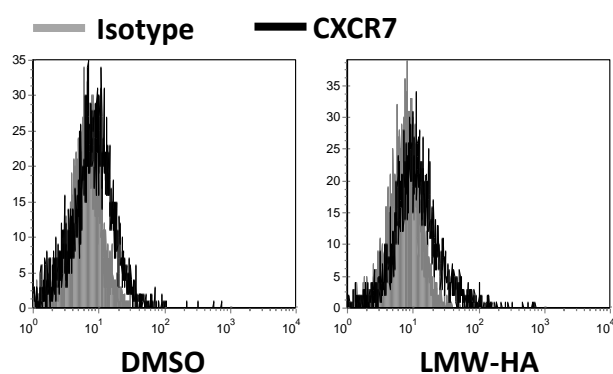
A



B



C



LMW-HA has no effect on K1 cell proliferation and migration. (A) K1 cells were seeded into 96 well plates (2,000 cells/well) and treated with or without LMW-HA. Cell proliferation was analyzed with WST-1 Kit. Data are mean \pm SEM for three independent experiments. (B) K1 cells were seeded into the upper chambers of transwell inserts treated with or without LMW-HA, and in the presence or absence of CXCL12 in the lower chambers. Migrated cells were determined. Data are mean \pm SEM for three independent experiments. (C) K1 cells were incubated with LMW-HA (100 μ g/ml) for 24 h, representative flow cytometric analysis of CXCR7 expression was shown.