

**Supplemental Table. Sample size for the CARDIA study and NHANES-linked mortality file among overweight and obese participants.**

	number (weighted %)					
		Risk level				
	All	Stage 0	Stage 1	Stage 2	Stage 3	Stage 4
NHANES-linked mortality file						
All	2725(64.1)	101(3.4)	561(14.6)	675(17.0)	589(13.8)	799(15.3)
Men	1319(33.0)	62(1.9)	228(6.4)	339(8.4)	287(7.4)	403(8.8)
Women	1406(31.1)	39(1.5)	333(8.2)	336(8.6)	302(6.4)	396(6.5)
NHW	1152(50.8)	45(2.8)	228(11.4)	297(13.9)	270(10.8)	312(11.9)
NHB	707(6.3)	31(0.3)	186(1.8)	179(1.6)	111(1.0)	200(1.6)
MEX	770(2.9)	20(0.1)	126(0.6)	181(0.7)	183(0.7)	260(0.8)
Alive	96(4.0)	5(0.2)	21(0.9)	18(0.8)	25(1.4)	27(0.9)
Deceased	2063(51.1)	93(3.3)	485(13.1)	559(14.5)	434(10.4)	492(9.9)
No CVD death	662(12.9)	8(0.2)	76(1.6)	116(2.4)	155(3.4)	307(5.4)
CVD death	2451(59.0)	99(3.4)	537(14.1)	629(16.1)	537(12.9)	649(12.5)
The CARDIA Study						
All	1876	550	980	268	78	
Men	915	311	422	142	40	
Women	961	239	558	126	38	
Blacks	1025	288	553	140	44	
Whites	851	262	427	128	34	
No events	1709	538	908	217	46	
Incident diabetes	167	12	72	51	32	

Weighted %: sample weights were used to calculate weighted percent.

NHW: Non-Hispanic White; NHB: Non-Hispanic Black; MEX: Mexican American; S0: stage 0, metabolically healthy; CVD: cardiovascular disease.

## Supplemental Figure legends

Supplemental Figure 1. Cumulative diabetes incidence according to risk classification system by sex and race.

Supplemental Figure 2. Cumulative diabetes incidence according to risk classification system by sex and race in overweight or obese participants.

Supplemental Figure 3. Adjusted hazard ratios for incident diabetes in overweight or obese participants. B, C. Adjusted hazard ratios for incident diabetes. Model 1 adjusted for age, sex, race, income, education, current smoker, current alcohol drinker and parent diabetes history. Model 2 additionally adjusted for BMI.

Supplemental Figure 4. Kaplan-Meier plots for all-cause mortality according to risk classification system by sex and race.

Supplemental Figure 5. Kaplan-Meier plots for all-cause mortality according to risk classification system by sex and race among participants with BMI  $\geq 25\text{kg/m}^2$ .

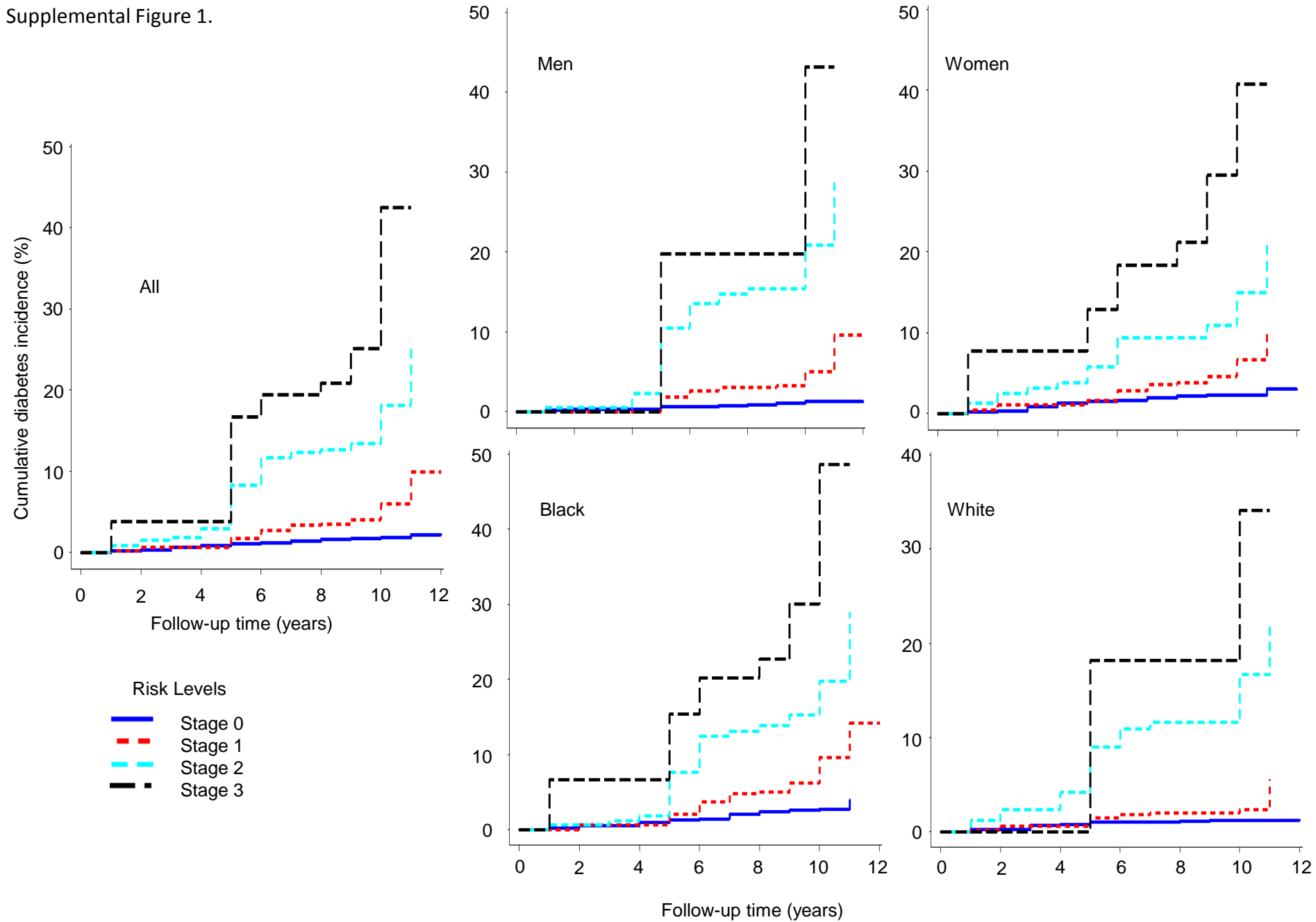
Supplemental Figure 6. Adjusted hazard ratios for all-cause mortality for risk classification system in overweight or obese subjects. B, C. Adjusted hazard ratios for all-cause mortality for risk staging system. Model 1 adjusted for age, sex, race, income, education, current smoker, and current alcohol drinker. Model 2 additionally adjusted for BMI.

Supplemental Figure 7. Kaplan-Meier plots for CVD mortality according to risk classification system by sex and race.

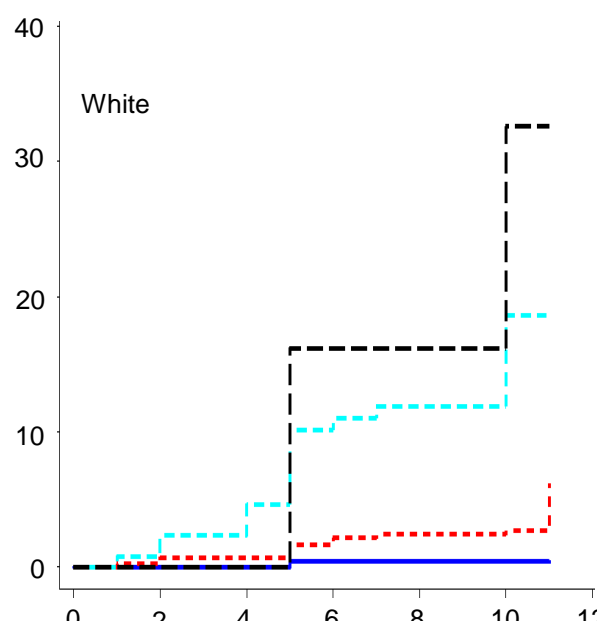
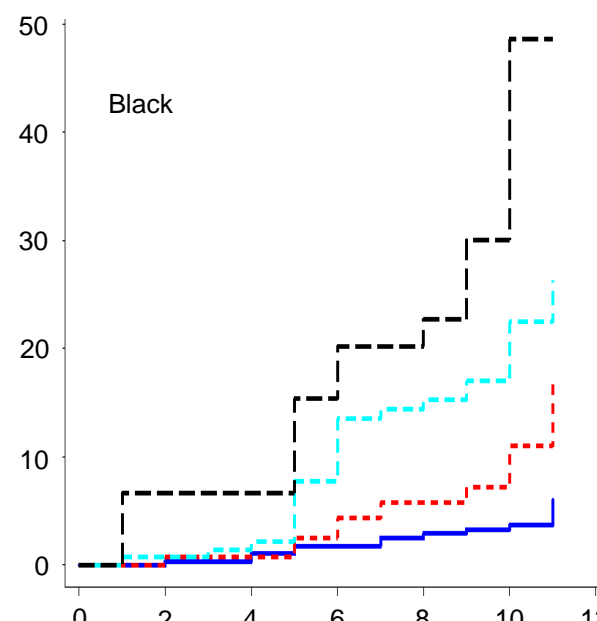
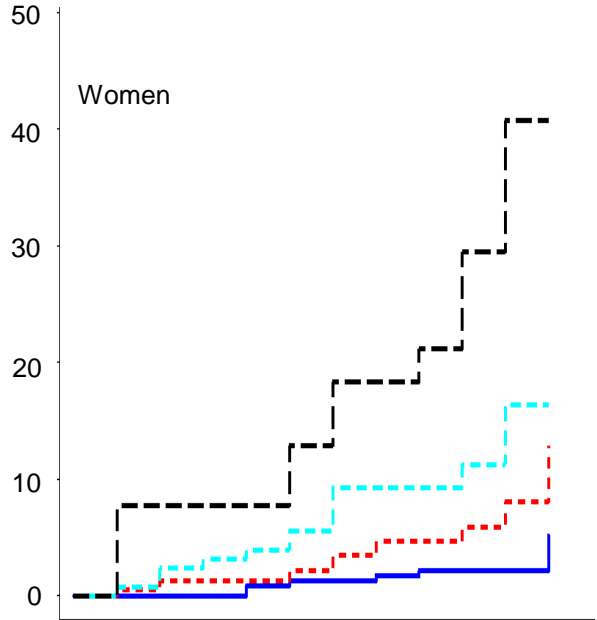
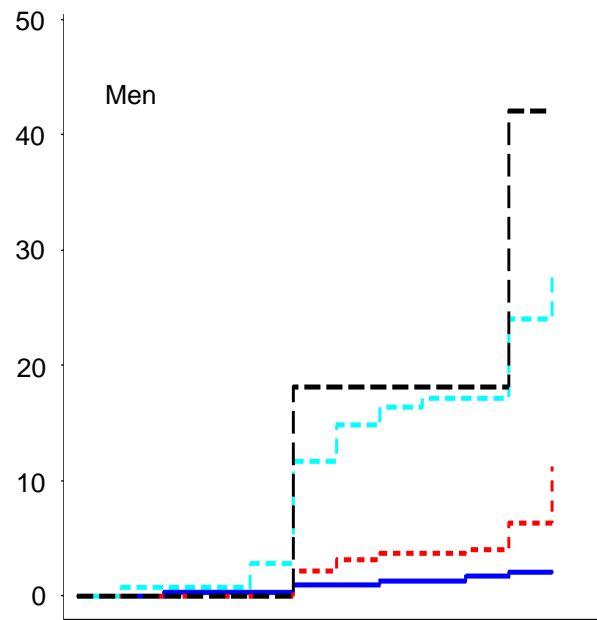
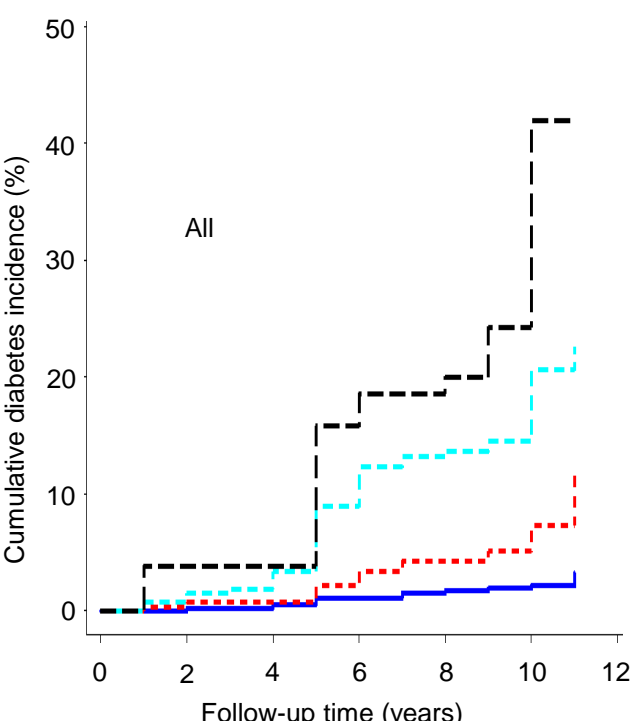
Supplemental Figure 8. Kaplan-Meier plots for CVD mortality according to risk classification system by sex and race among participants with BMI  $\geq 25\text{kg/m}^2$ .

Supplemental Figure 9. Adjusted hazard ratios for cardiovascular mortality for risk classification system in overweight or obese subjects. B, C. Adjusted hazard ratios for all-cause mortality for risk staging system. Model 1 adjusted for age, sex, race, income, education, current smoker, and current alcohol drinker. Model 2 additionally adjusted for BMI.

Supplemental Figure 1.



Supplemental Figure 2.



**Risk Levels**

- Stage 0 (solid blue line)
- Stage 1 (dashed red line)
- Stage 2 (dashed cyan line)
- Stage 3 (dashed black line)

Follow-up time (years)

