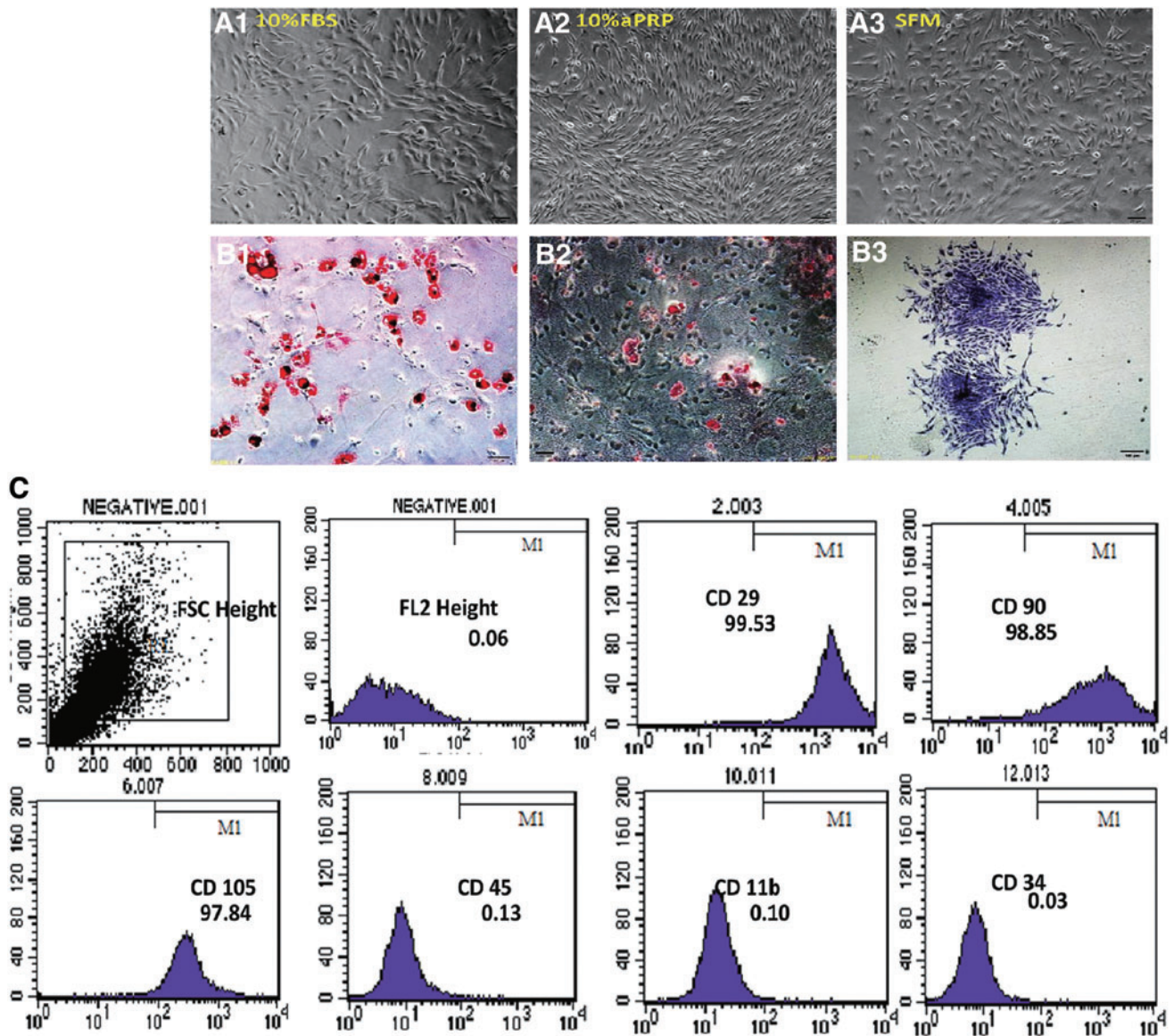


Supplementary Data



SUPPLEMENTARY FIG. S1. Identification of cultured rat BM-MSCs. (A1–A3) Showing the morphology of BM-MSCs cultured in 10% aPRP, 10% FBS, and SFM. (B1–B3) Showing adipogenic and osteogenic differentiation capacity, as well as high CFU-F ability of BM-MSCs. (C) Flow cytometric analysis of surface-marker expression on MSCs. ($n=4$) (original magnification $20\times$, scale bar = 25 μm). BM-MSCs, bone marrow-derived mesenchymal stem cells; CFU-f, fibroblastoid colony-forming unit; FBS, fetal bovine serum; MSCs, mesenchymal stem cells; PRP, platelet rich plasma; SFM, serum-free medium.