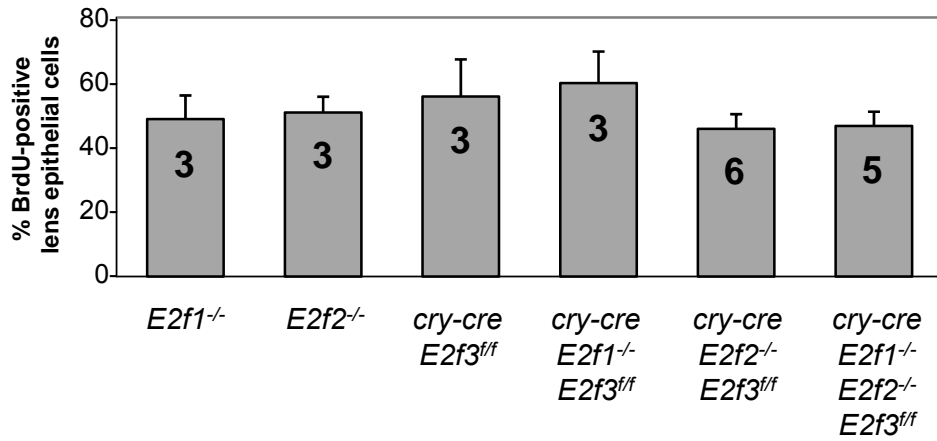
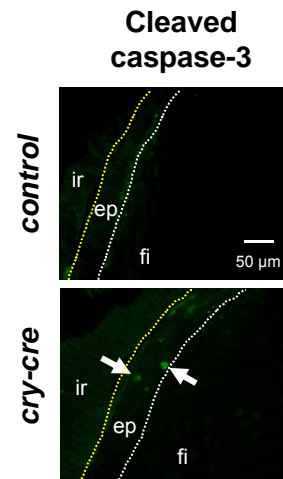


A**B**

Number of *cry-cre*; *E2f1*^{-/-}; *E2f2*^{-/-}; *E2f3*^{LoxP/LoxP} embryos, neonates, and weanlings recovered for analysis of phenotype penetrance

Age	Total Number	Number with evidence of vacuolation
<i>E13.5</i>	14	0
<i>E14.5</i>	2	0
<i>E16.5</i>	7	0
<i>E17.5</i>	10	0
<i>E19.5</i>	1	0
<i>P0</i>	8	4
<i>P1</i>	16	8
<i>P4</i>	1	0
<i>P7</i>	8	6
<i>P16</i>	4	4
<i>P21</i>	2	2

C**D**