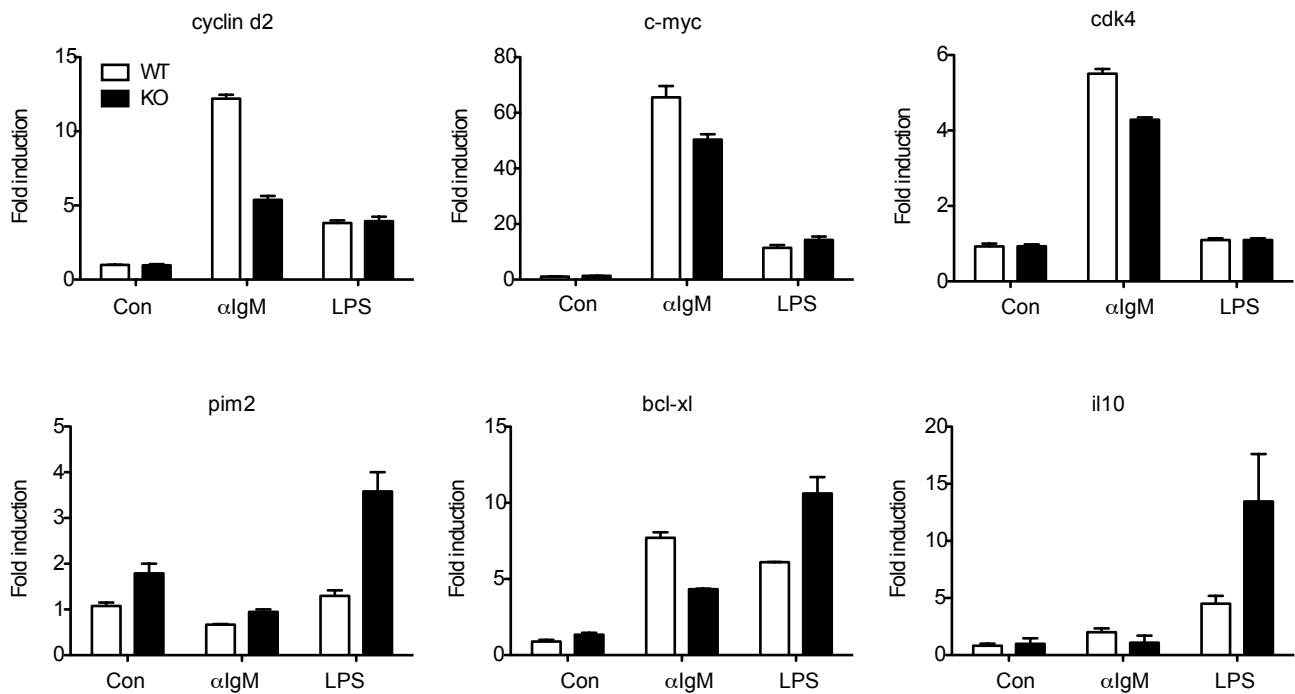


Supplemental Figure 4



Bcl-3 differentially modulates BCR- and LPS-induced gene expression.

FO B cells were isolated by FACS sorting from B cells pooled from 4-5 mice as in Fig. 3 (A,C) and stimulated with anti-IgM (6.25 μ g/ml) or LPS (200 ng/ml) for 4 hours as shown. RNA was extracted and real-time PCR was performed for genes indicated. Data are the mean \pm SD from 2-3 independent experiments. Total RNA was isolated with Trizol (Invitrogen). cDNA was prepared with the Superscript III kit (Invitrogen). The primers and PCR master mix were from Applied Biosystems (Foster City, CA). The real-time quantitative PCR was performed using a StepOnePlus (Applied Biosystems, Foster City, CA) and analyzed using StepOne software.