

Figure S5

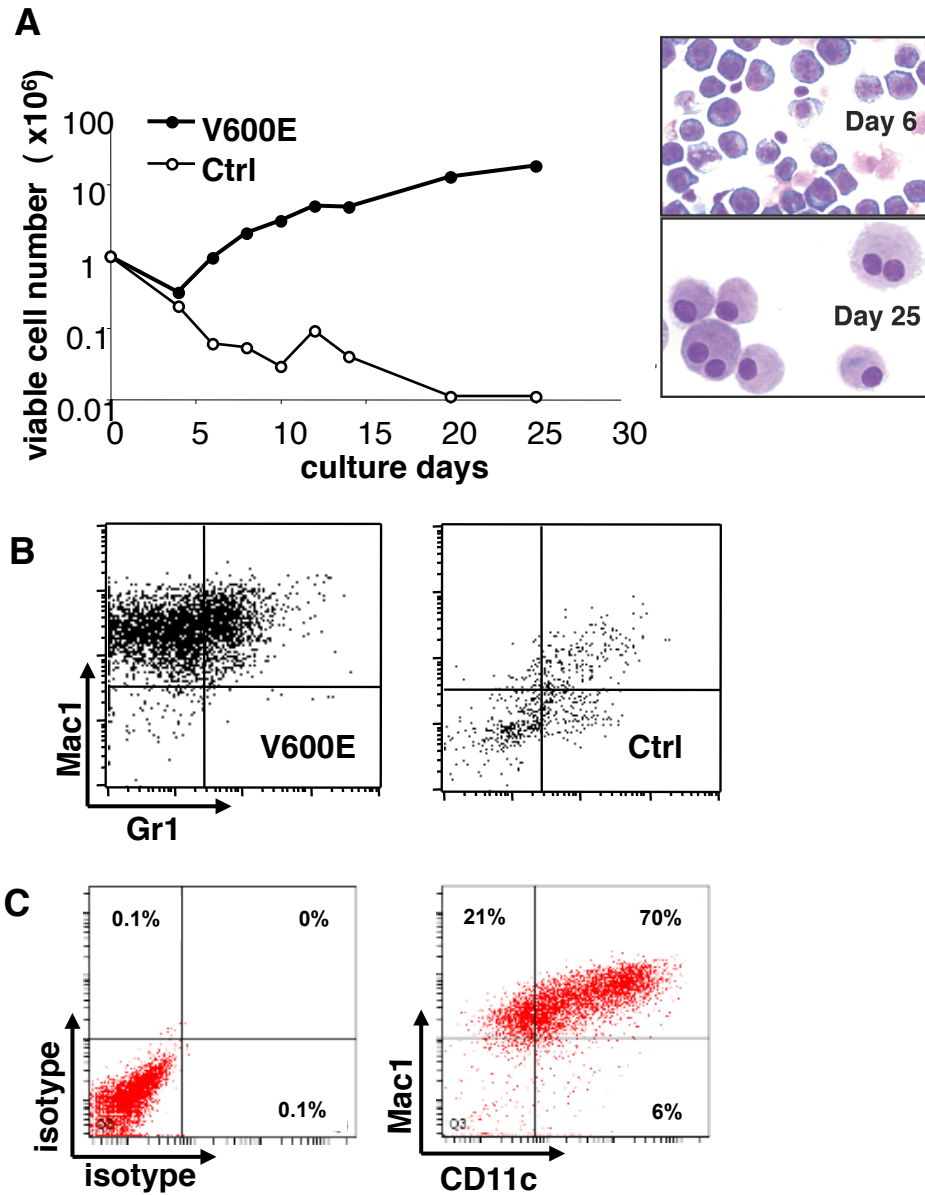


Figure S5. In vitro liquid culture.

- (A) A representative growth curve of Brf^{fV600E}BM cells in serum-free liquid culture (left) and microphotographs of Giesma-staining of the cells developed on day 6 and 25 (right) shown at x200 original magnification.
- (B) A Representative Mac-1/Gr-1 plot of Brf^{fV600E} (V600E) and control (Ctrl) BM cells cultured for 5 days.
- (C) A Representative Mac1/CD11c plot of Brf^{fV600E}BM cells cultured for 2 weeks (right) with isotype control staining (left).