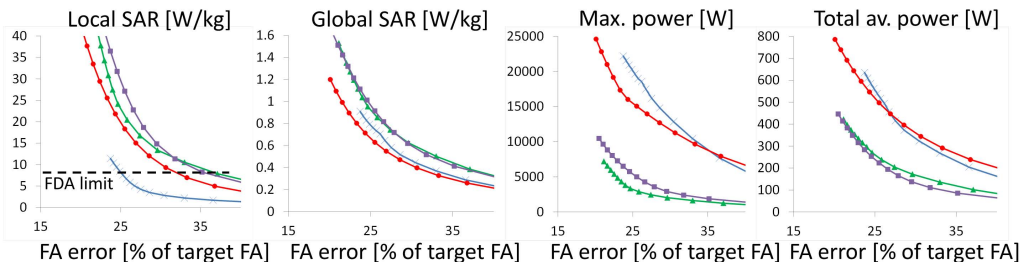
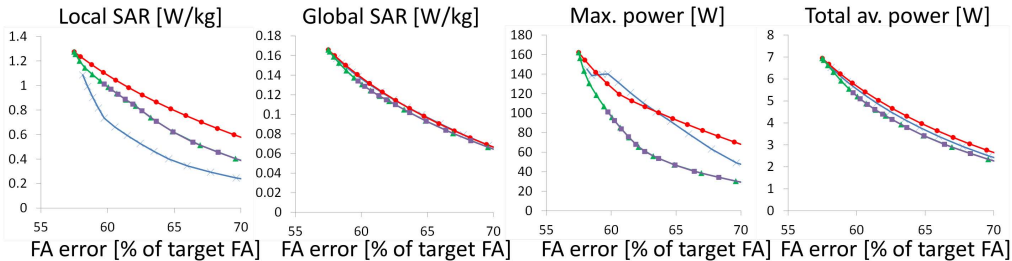


A. RF shimming (torso at 3 T, flat target phase)

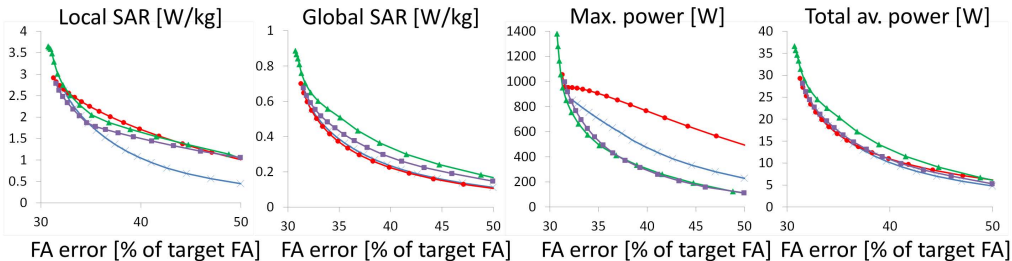


B. 2-spokes (torso at 3 T, flat target phase)

- ✖ Local SAR limit is varied. No global SAR and power constraints.
- Global SAR limit is varied. No local SAR and power constraints.
- ▲ Max. power limit is varied. No av. power and SAR constraints.
- Av. power limit is varied. No max. power and SAR constraints.

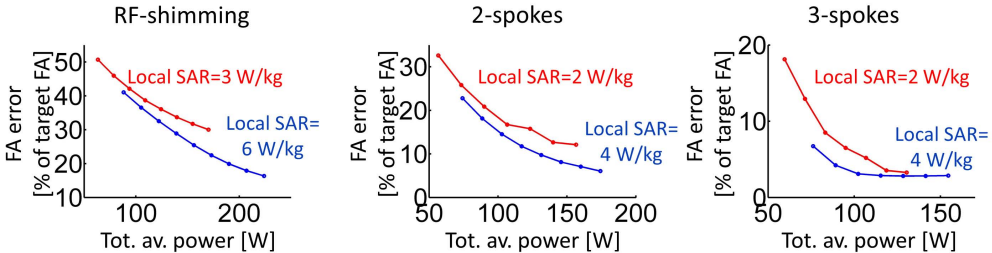


A. RF shimming (head at 7 T, flat target phase)

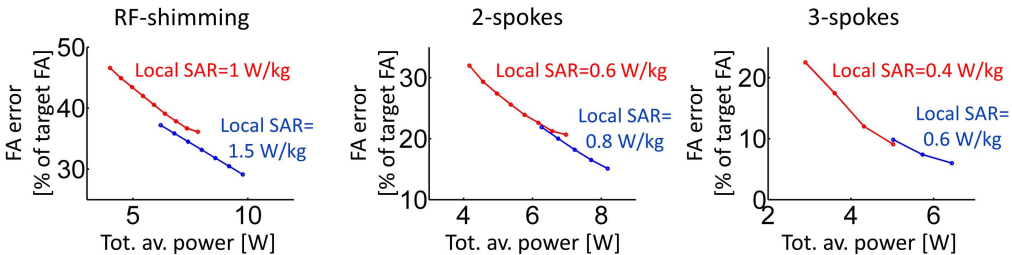


B. 2-spokes (head at 7 T, flat target phase)

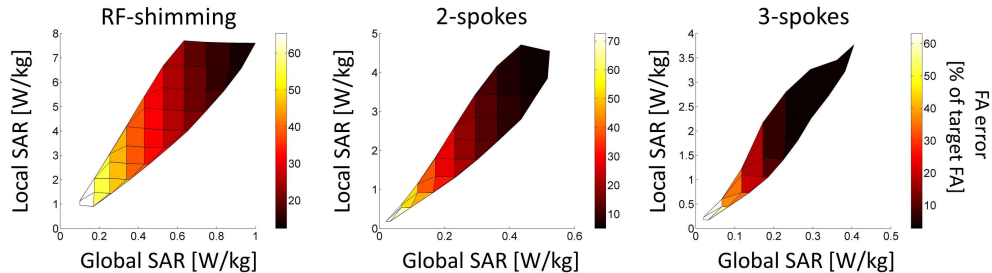
- ✖ Local SAR limit is varied. No global SAR and power constraints.
- Global SAR limit is varied. No local SAR and power constraints.
- ▲ Max. power limit is varied. No av. power and SAR constraints.
- Av. power limit is varied. No max. power and SAR constraints.



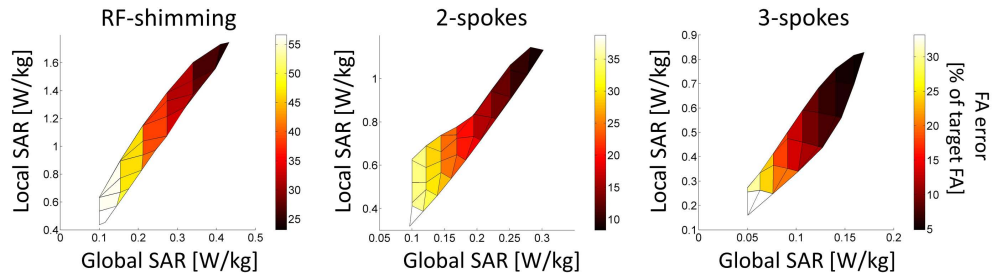
A. Torso at 3 T



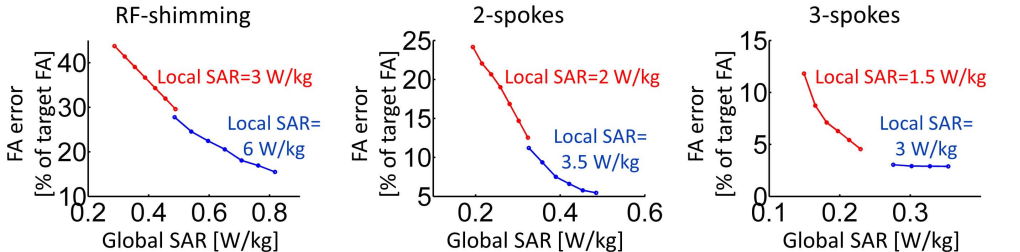
B. Head at 7 T



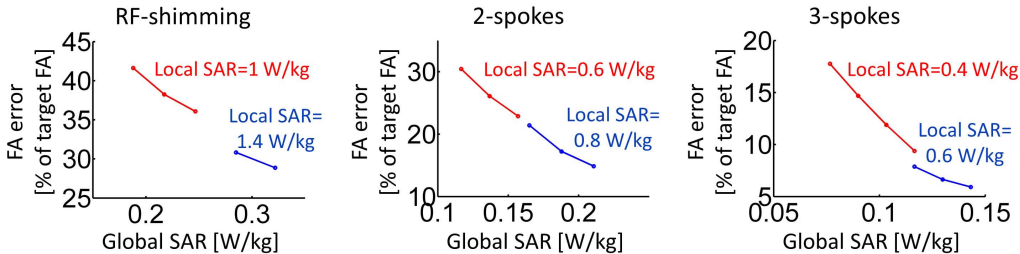
A. Torso at 3 T



B. Head at 7 T



A. Torso at 3 T



B. Head at 7 T