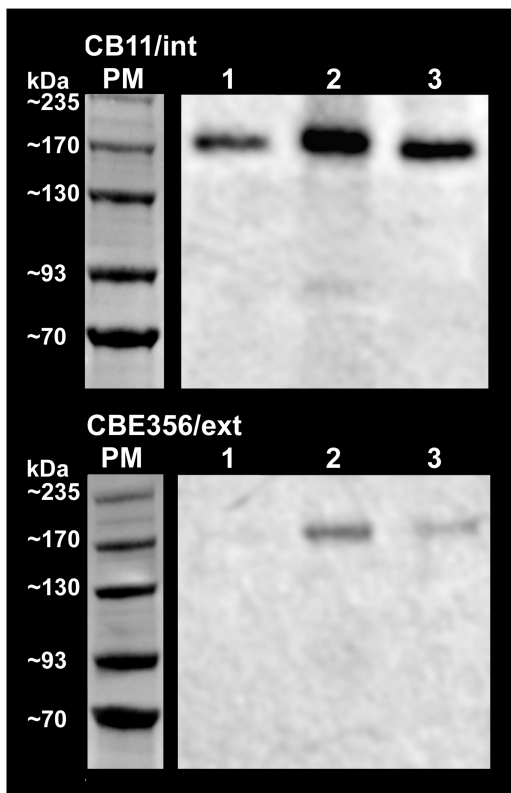


Figure S4: Reactivity observed by western immunoblot with the CBE356 and CB11 anti-erbB2 antibodies, in 3 feline mammary tissues.



**Legend:** The expected molecular weight (185 kDa) of the reactive protein band, was determined by comparison, with the molecular weights of the standard Protein Marker (PM). Lane 1: non-neoplastic cat mammary tissues; Lanes 2-3: cat mammary lesion samples. .