

Supporting Information:

Figure S1:

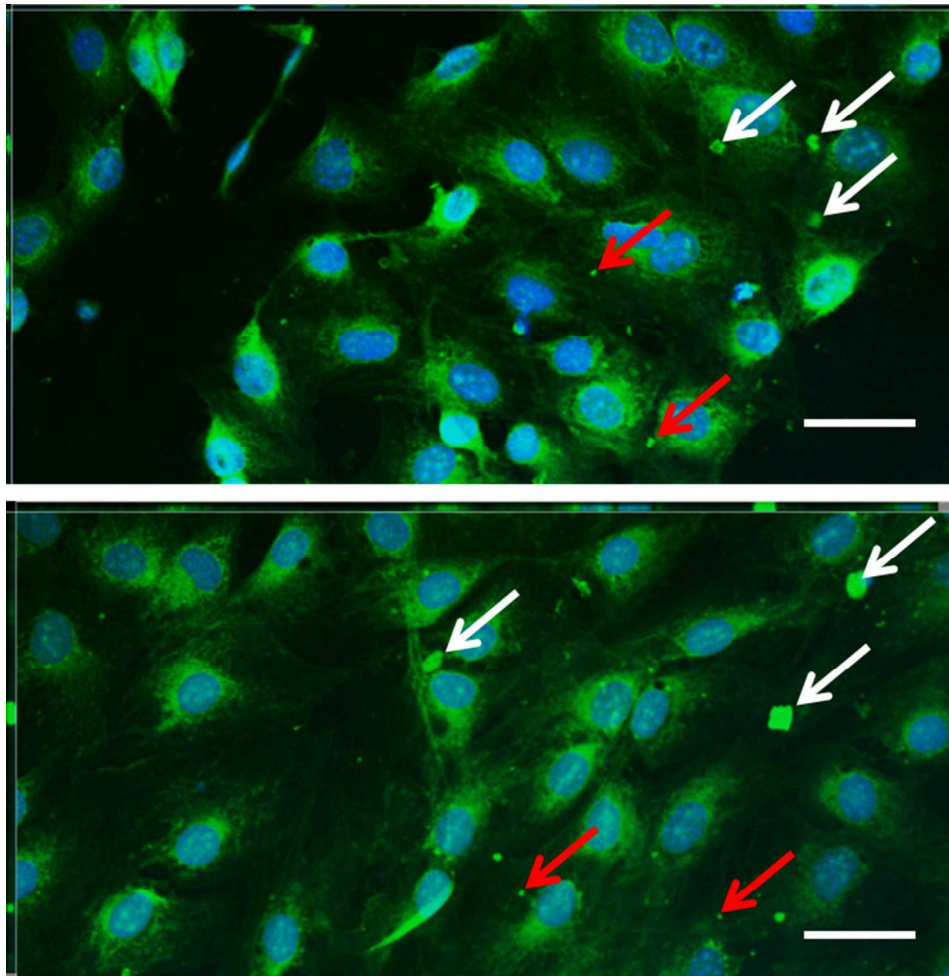


Figure S1. Release of siRNA from the surface is in the form of large pieces of LbL film. These large pieces are further degraded until they can transfect cells effectively. The white arrows point to pieces of the film that are in excess of $2\mu\text{m}$ in diameter, while the red arrows point to foci that are less than $0.5\mu\text{m}$. Scale bar = $20\mu\text{m}$.

Figure S2:

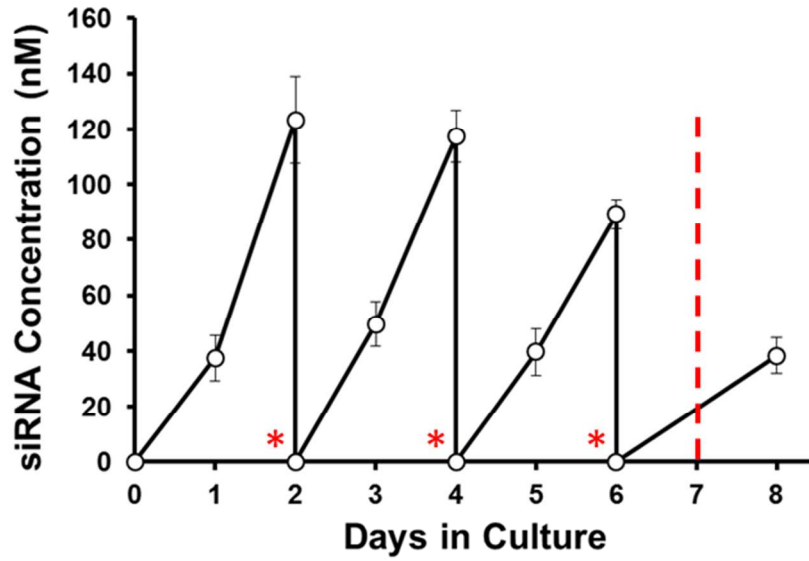


Figure S2. Release of siRNA from the bandage and the relative concentration within the well of released siRNA. *Days when the media is changed on the cells. The study period ended on day 7.