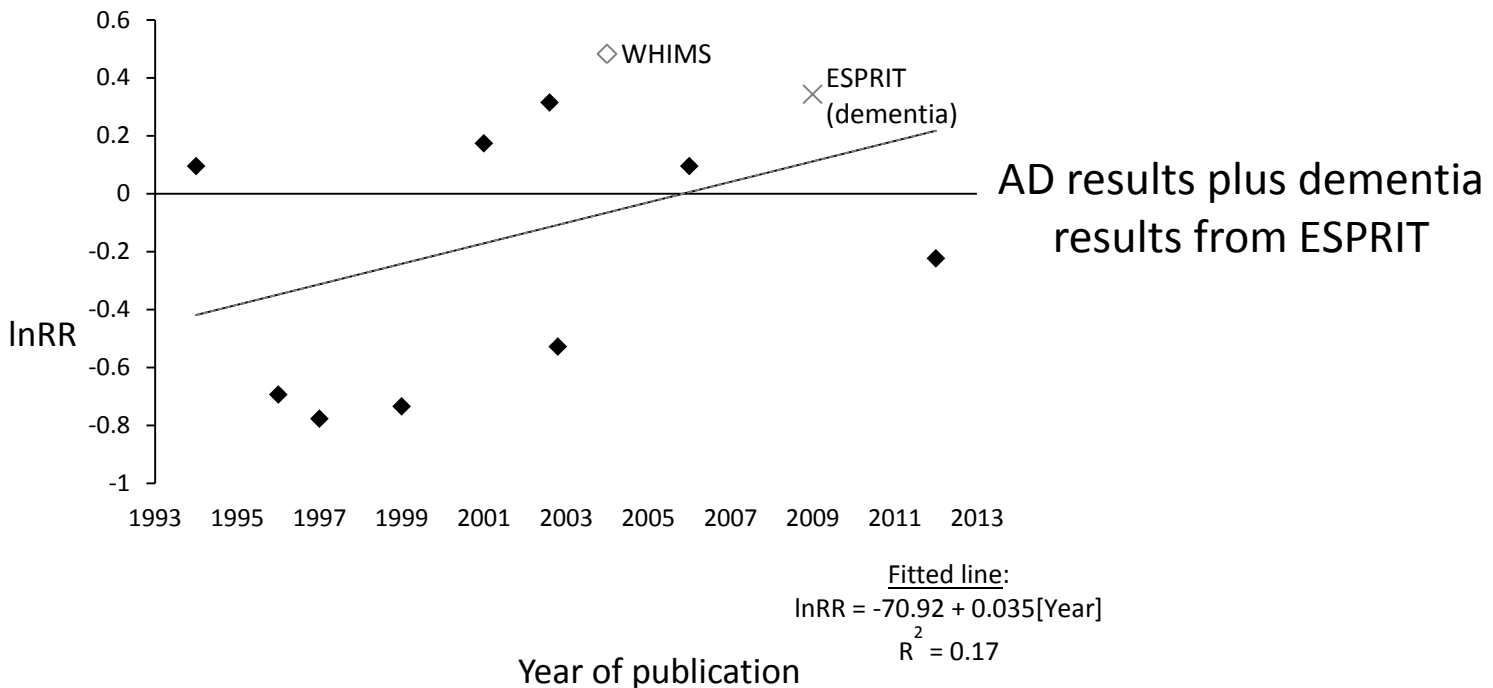
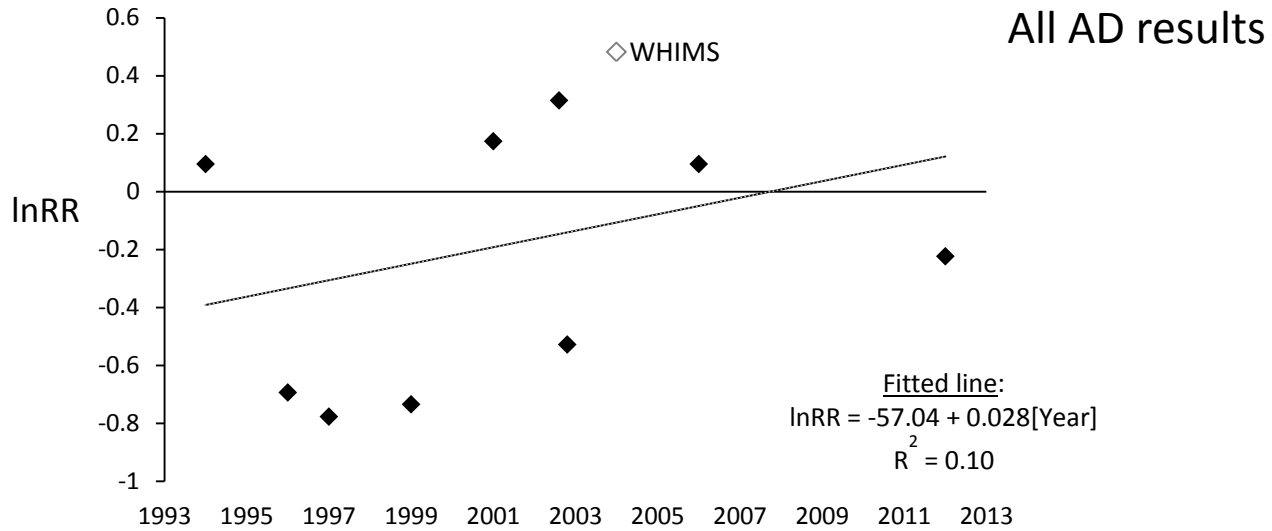


Web Table 1. Search Strategy for Hormone Therapy and Dementia Risk

DATABASE	Ovid MEDLINE(R) In-Process & Other Non-Indexed Citations, Ovid MEDLINE(R) Daily and Ovid MEDLINE(R) 1946 to Present
DATE	09/29/2011
STRATEGY	(#1 AND #2 AND #3 AND #4) NOT #6
#1	dementia/ or 'alzheimer Disease'/ or (AD or dementia or alzheimer\$2).tw.
#2	exp risk/ or incidence/ or (risk or inciden\$2 or onset or prevent\$3 or caus\$2).tw.
#3	'intervention studies'/ or exp 'clinical trials as topic'/ or 'cohort studies'/ or exp 'longitudinal studies'/ or 'case-control studies'/ or (longitudinal\$2 or prospective\$2 or follow\$2 or follow-up or 'follow up' or cohort or later or 'case control' or 'case-control' or 'clinical trial' or 'controlled trial' or 'intervention stud\$2').tw.
#4	exp 'hormone replacement therapy' OR exp 'estrogens' OR 'hormone replacement therapy' OR 'estrogen replacement therapy' OR 'hormone therapy' OR 'estrogen therapy' OR 'HRT' OR 'ERT' OR (('estrogen\$1' OR 'hormone\$2' OR 'oestrogen\$1') AND (postmenopause/ OR ('postmenopaus\$2' OR 'post-menopaus\$2' OR ('post' AND 'menopaus\$2')))).tw.
#5	1 and 2 and 3 and 4
#6	limit 5 to yr=2013
DATABASE	PUBMED
DATE	09/29/2011
STRATEGY	#1 AND #2 AND #3 AND #4 AND #5
#1	"dementia"[mesh:noexp] OR "alzheimer Disease"[mesh] OR ("AD"[tw] OR "dementia"[tw] OR "alzheimer"[tw] or "alzheimers"[tw] or "alzheimer's"[tw])
#2	"risk"[mesh] OR "incidence"[mesh] OR ("risk"[tw] OR "incident"[tw] OR "incidence"[tw] OR "onset"[tw] OR "prevent"[tw] OR "prevents"[tw] OR "prevented"[tw] OR "cause"[tw] OR "causes"[tw] OR "caused"[tw])
#3	"intervention studies"[mesh:noexp] OR "clinical trials as topic"[mesh] OR "cohort studies"[mesh:noexp] OR "longitudinal studies"[mesh] OR "case-control studies"[mesh:noexp] OR ("longitudinal"[tw] OR "longitudinally"[tw] OR "prospective"[tw] OR "prospectively"[tw] OR "follow"[tw] OR "followed"[tw] OR "follow-up"[tw] OR "follow up"[tw] OR "cohort"[tw] OR "later"[tw] OR "case control"[tw] OR "case-control"[tw] OR "clinical trial"[tw] OR "controlled trial"[tw] OR "intervention study"[tw] or "intervention studies"[tw])
#4	"Hormone Replacement Therapy"[Mesh:exp] OR "estrogens"[Mesh:exp] OR "hormone replacement therapy"[tw] OR "estrogen replacement therapy"[tw] OR "hormone therapy"[tw] OR "estrogen therapy"[tw] OR "HRT"[tw] OR "ERT"[tw] OR (("estrogen*" [tw] OR "hormone*" [tw] OR "oestrogen*" [tw]) AND ("postmenopause"[Mesh] OR ("postmenopausal"[tw] OR "post-menopausal"[tw] OR ("post"[tw] AND "menopausal"[tw])) OR ("postmenopause"[tw] OR "post-menopause"[tw] OR ("post"[tw] AND "menopause"[tw]))))
#5	0000/00/0000:2012/12/31[EDAT]
DATABASE	EMBASE
DATE	09/29/2011
STRATEGY	(#1 AND #2 AND #3 AND #4) NOT #5
#1	('dementia' OR 'alzheimer disease')/de OR (ad OR dementia OR alzheimer*):ti,ab
#2	('risk' OR 'risk factor' OR 'population risk' OR 'attributable risk' or 'incidence')/de OR (risk OR inciden* OR onset OR prevent* OR caus*):ti,ab
#3	'clinical trial'/exp OR ('intervention study' OR 'cohort analysis' OR 'longitudinal study' OR 'prospective study' OR 'evaluation and follow up' OR 'follow up' OR 'case control study' OR 'population based case control study' OR 'controlled study' OR 'major clinical study')/de OR (longitudinal* OR prospective* OR follow* OR follow-up OR 'follow up' OR cohort OR later OR 'case control' OR 'case-control' OR 'clinical trial' OR 'controlled trial' OR 'intervention study' OR 'intervention studies'):ti,ab
#4	'hormonal therapy'/de OR (estrogen or 'hormone substitution')/exp OR ('Hormone Replacement Therapy' OR 'hormone replacement therapy' OR 'estrogen replacement therapy' OR 'hormone therapy' OR 'estrogen therapy' OR 'HRT' OR 'ERT'):ti,ab OR ((estrogen* OR hormone* OR oestrogen*) AND (postmenopause/de OR

	(postmenopausal OR post-menopausal OR (post AND menopausal)):ti,ab))
#5	[1-1-2013]/sd

Web Figure 1. Scatter plots showing how published results changed over time. “All AD results” shows the study-specific estimates from all studies included in our primary meta-analysis of any v. no HT use, plotted by year of publication. “AD results plus dementia results from ESPRIT” adds the all-cause dementia findings from Ryan et al 2009b to all AD-specific findings.



Web References:

1. Ryan J, Carriere I, Scali J, Ritchie K, Ancelin ML. Life-time estrogen exposure and cognitive functioning in later life. *Psychoneuroendocrinology*. Feb 2009;34(2):287-298.