

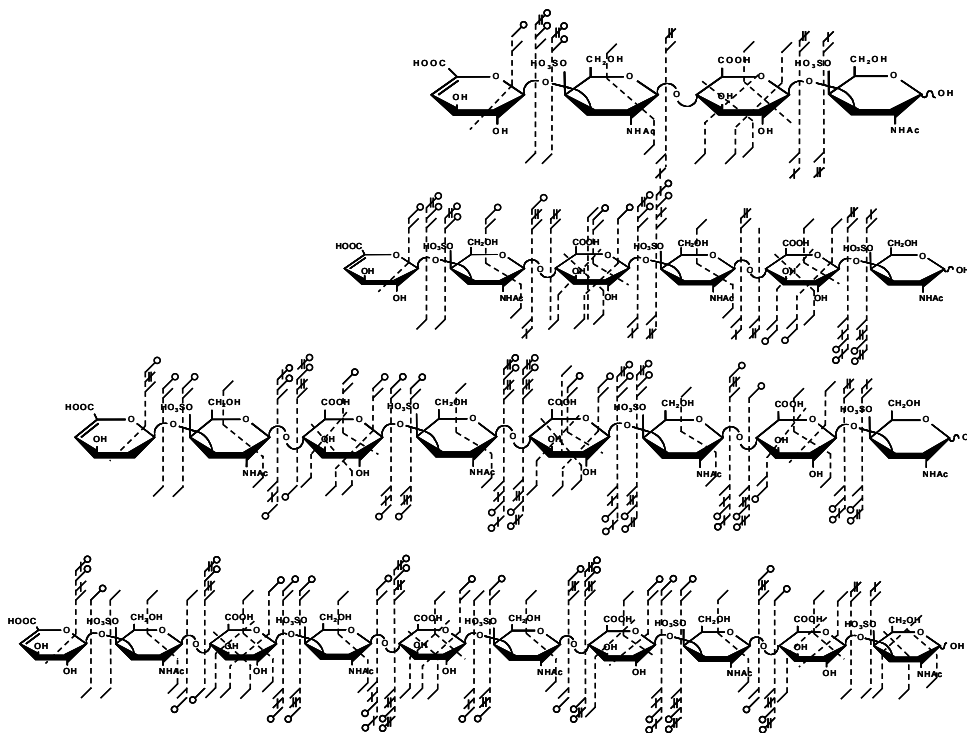
SUPPLEMENTAL MATERIAL

Supplemental Figure Captions

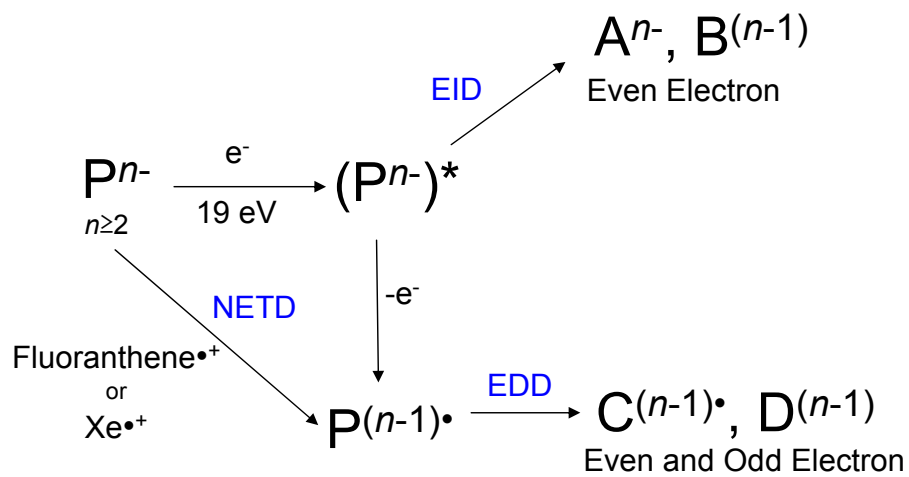
- S1.** EDD product assignments for CS-A dp4-10.
- S2.** Proposed pathway for the electron-based activation of multiply charged anions.
- S3.** Assigned product ions for the EID of the $[M-H]^{1-}$ precursor ion for the CS-A/DS epimer pair.
- S4.** The product ions in the previous stereo-specific region in the EID mass spectrum. (Based on accurate mass, the $^{0,2}A_3$ ion is not observed.)
- S5.** Assigned product ions for the EDD of the $[M-3H+1Na]^{2-}$ precursor ion for the CS-A/DS epimer pair.
- S6.** Assigned product ions for the EDD of the $[M-4H+2Na]^{2-}$ precursor ion for the CS-A/DS epimer pair.

Supplemental Figures

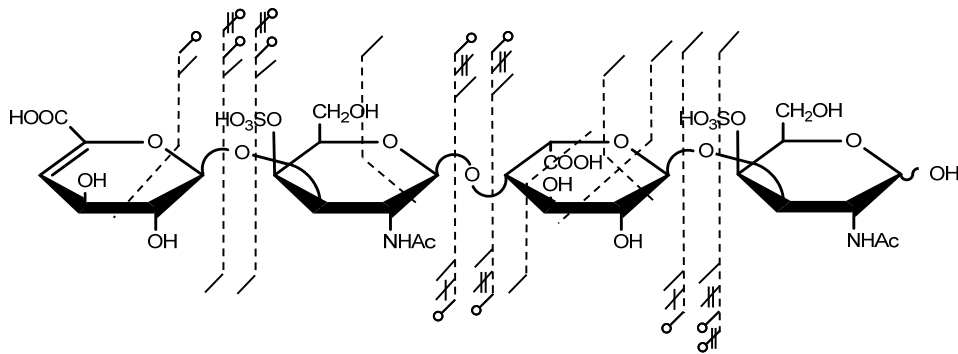
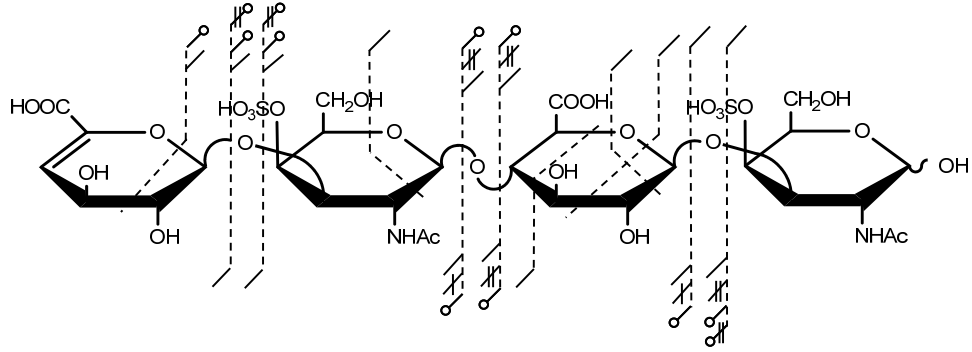
S1.



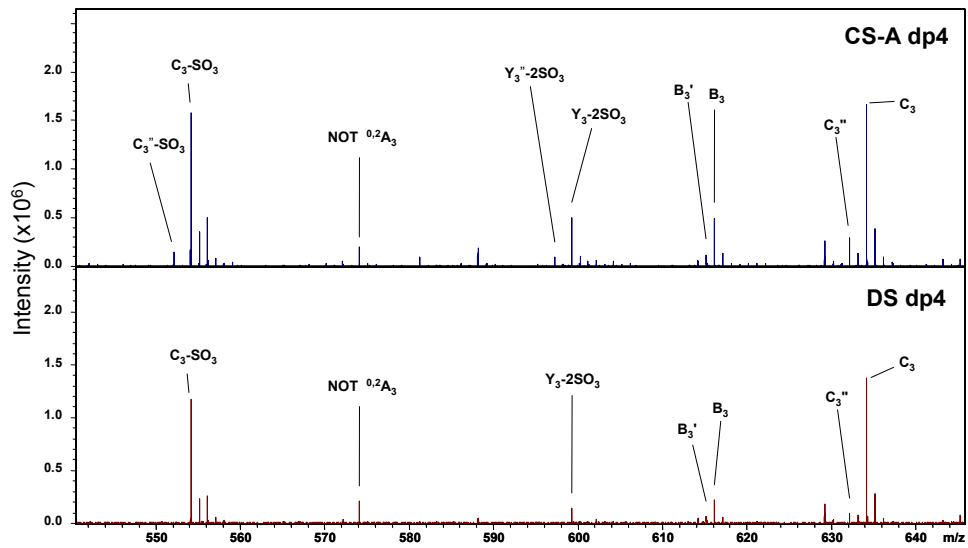
S2.



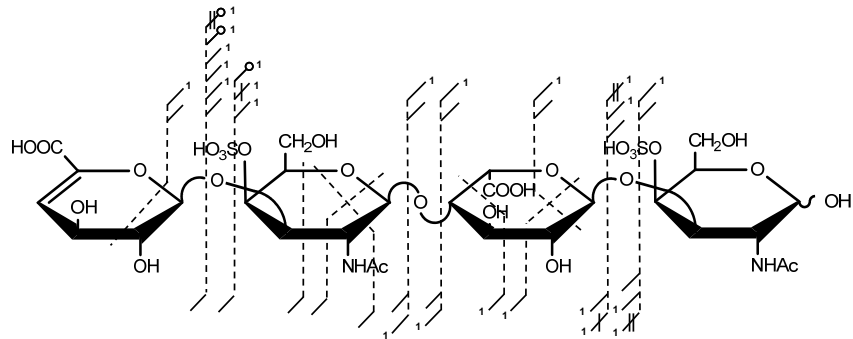
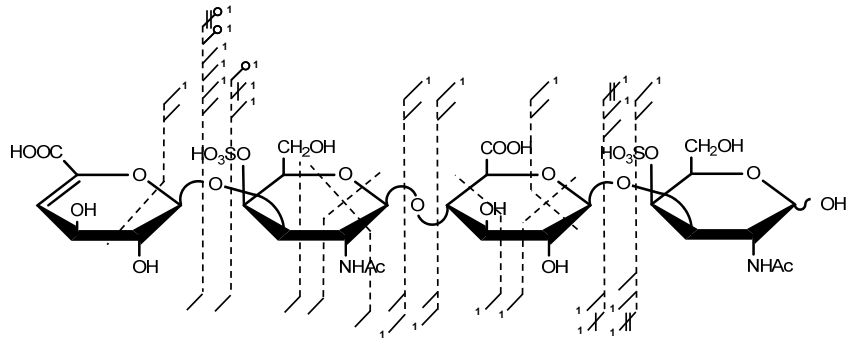
S3.



S4.



S5.



S6.

