

SUPPLEMENTARY INFORMATION

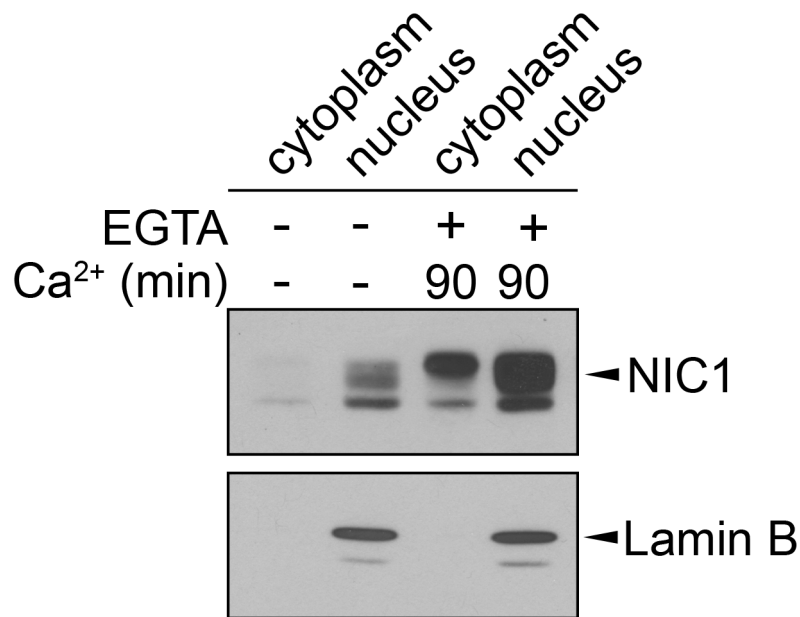


FIGURE S1. Pulse of NOTCH1 activation leads to NIC1 nuclear localization.

MIA PaCa-2 cells were left untreated (-) or treated with EGTA (4mM) for 15min (+). EGTA-containing medium was removed and replaced by normal culture media (Ca²⁺) for 90min. Nuclear and cytoplasmic extracts were prepared and separated on SDS-PAGE. NIC1 expression levels in cytoplasmic and nuclear extracts were analysed by western blotting. As a control for nuclear protein, Lamin B expression levels were assessed.