



WILEY
Blackwell

the **FEBS**
Journal

www.febsjournal.org

G-protein coupled receptor 56 promotes myoblast fusion through serum response factor- and nuclear factor of activated T-cell-mediated signalling but is not essential for muscle development *in vivo*

Melissa P. Wu, Jamie R. Doyle, Brenda Barry, Ariane Beauvais, Anete Rozkalne, Xianhua Piao, Michael W. Lawlor, Alan S. Kopin, Christopher A. Walsh and Emanuela Gussoni

DOI: 10.1111/febs.12529

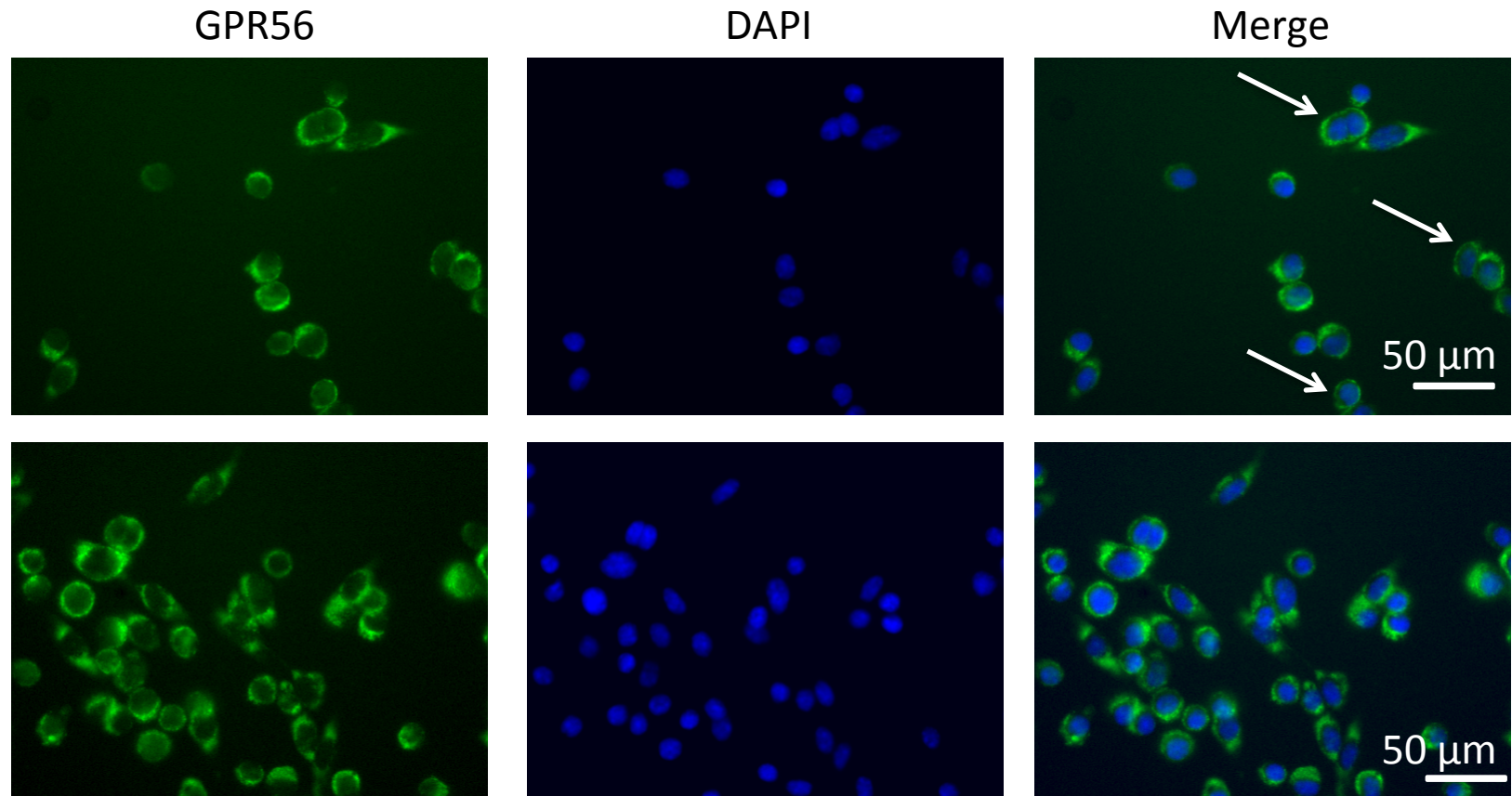


Figure S1. GPR56 localization at the membrane of primary WT myoblasts undergoing differentiation (day2). Cells were fixed in acetone for 10 minutes at -20°C and incubated with anti-H11 antibody overnight at 4°C. Arrows point at GPR56 localized to the cell membrane.

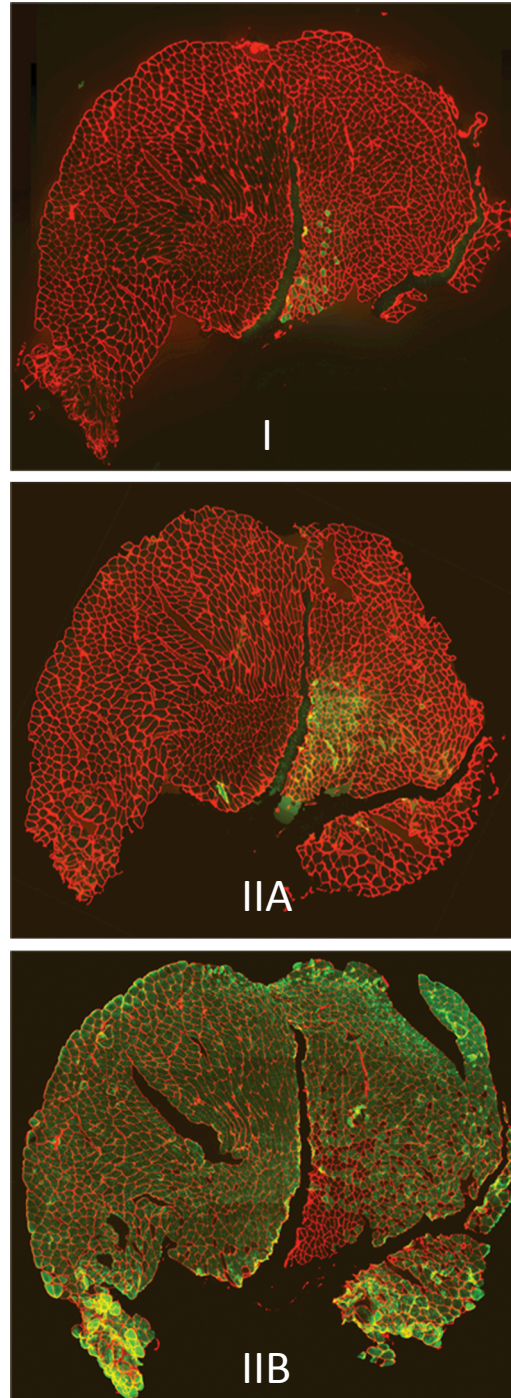


Figure S2. Myosin heavy chain staining of muscle tissue. Representative sequential sections of MHC I, MHC IIA, and MHC IIB staining (green) of gastrocnemius muscle. Individual myofibers are outlined with laminin staining (red).

Supplementary Table 1. RT-qPCR primer sequences and concentrations

Gene	Forward primer (5'→3')	Final conc. (nM)	Reverse primer (5'→3')	Final conc. (nM)
B2M	ctgaccggcctgtatgctat	50	ccgttcttcagcatttgat	50
GAPDH	aactttggcattgtggaagg	50	acacattgggggtaggaaca	50
GPR56	gtgaataactacggccccatt	300	catagcgacgttgaacaggaa	200
Myf5	ggcatgcctgaatgtaacag	100	gacacggagcctttatctgc	100
MyoD	tacagtggcgactcagatgc	37.5	cggtgtcgtcgcattctg	37.5
Myogenin	cagtgaatgcaactcccaca	100	caaatgatctcctgggttg	100
NFATc1	acatgacggggctggag	200	cataactgtagtgttctgctcggc	400
NFATc2	atgtgagcaggaggagagga	300	tggacctcaatccgtagctc	200
NFATc3	gaaaaatgtcaaggggctca	50	gcaaagatggaactgaaggc	50
NFATc4	gccgcaagctgcgaggatga	200	tccccaggggccaaacgaca	100
FHL1-1	caacctccggggcaggcatc	200	gcctttaccaaacccgggcttc	400
Embryonic MHC	cgcagaatcgcaagtcaata	100	caggaggtcttctcactcc	100