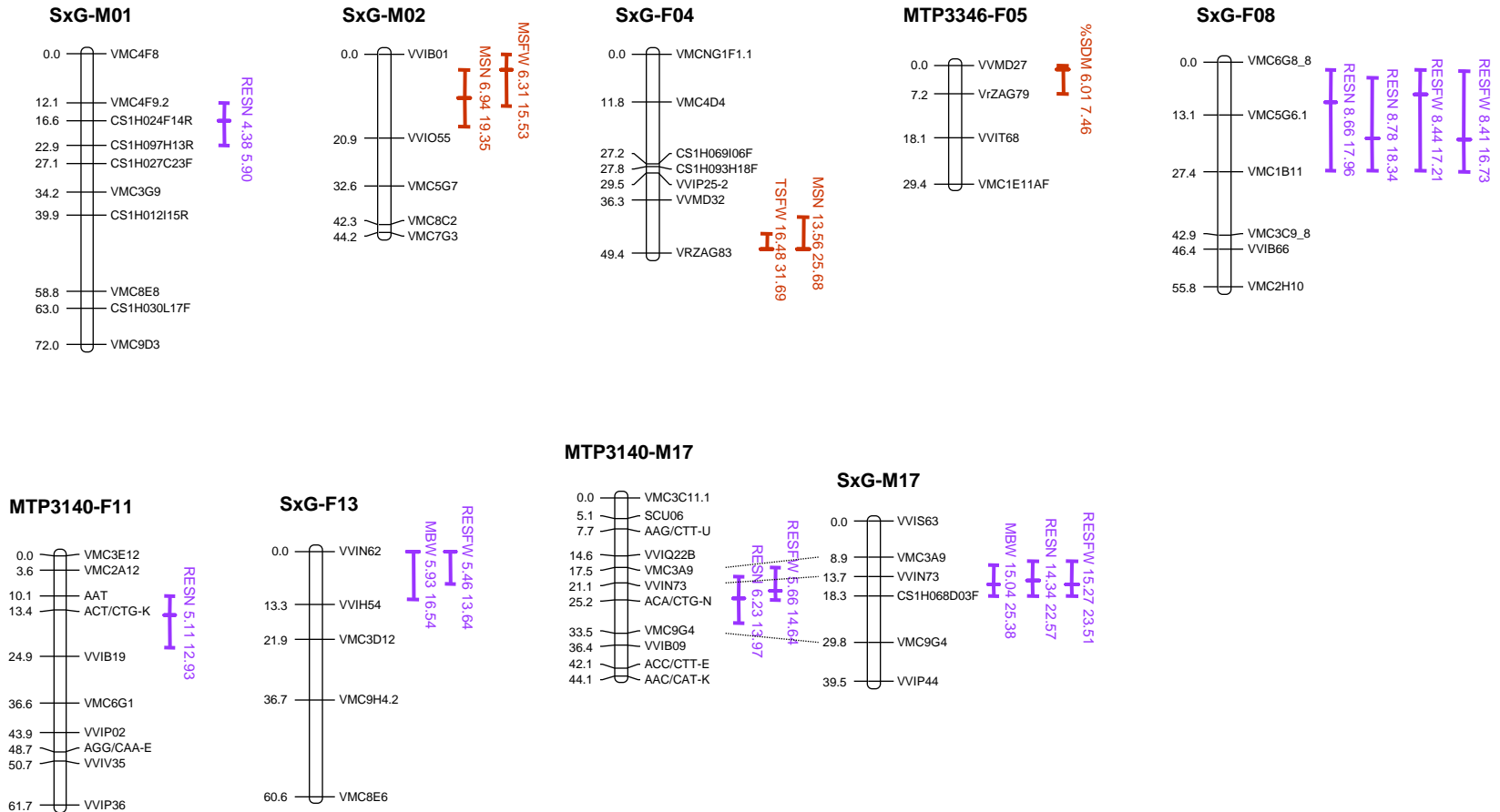
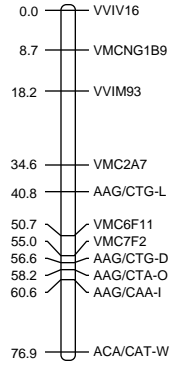


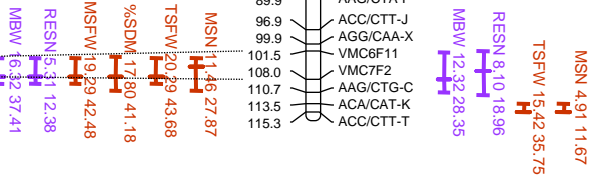
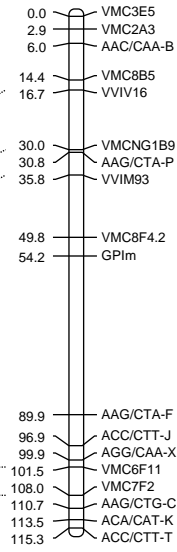
Additional file 13: Figure S4 - Stable QTLs for seven seed and berry-related traits in four grapevine mapping populations (parental maps). The confidence intervals (CIs) shown are for the inter-year BLUPs of the traits for which a QTL overlapping with this CI was also found in at least two different years. Distances are in Kosambi cM. Berry-related traits are in purple and seed-related traits in brown. MBW: mean berry weight; MSN: mean seed number; TSWF: total seed fresh weight; MSFW: mean seed fresh weight; %SDM: seed dry matter percentage; RESN: residual berry weight unexplained by seed number; RESFW: residual berry weight unexplained by total seed fresh weight.



MTP3140-F18



MTP3140-M18



SxG-M18

