

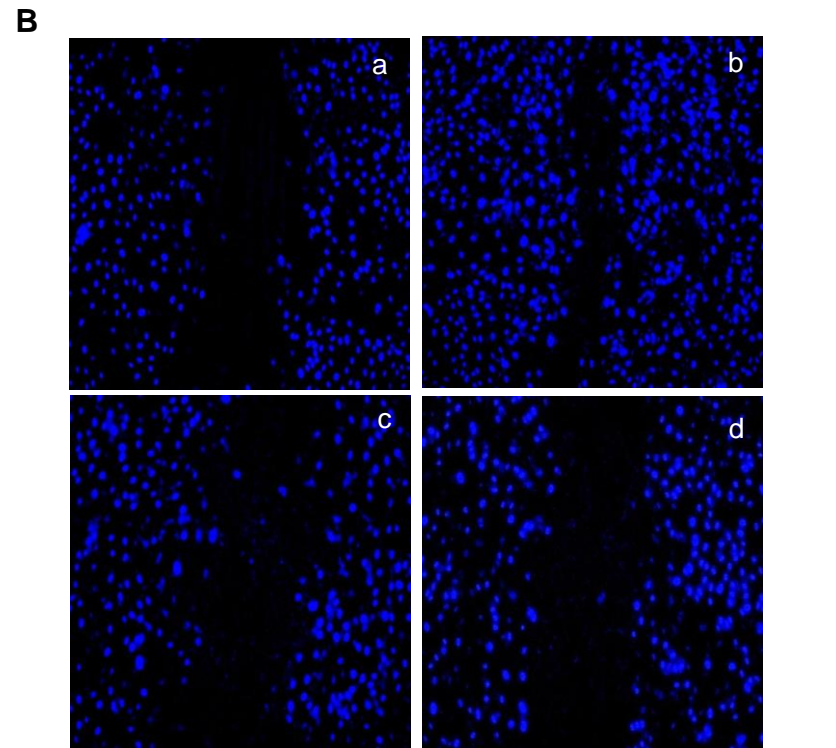
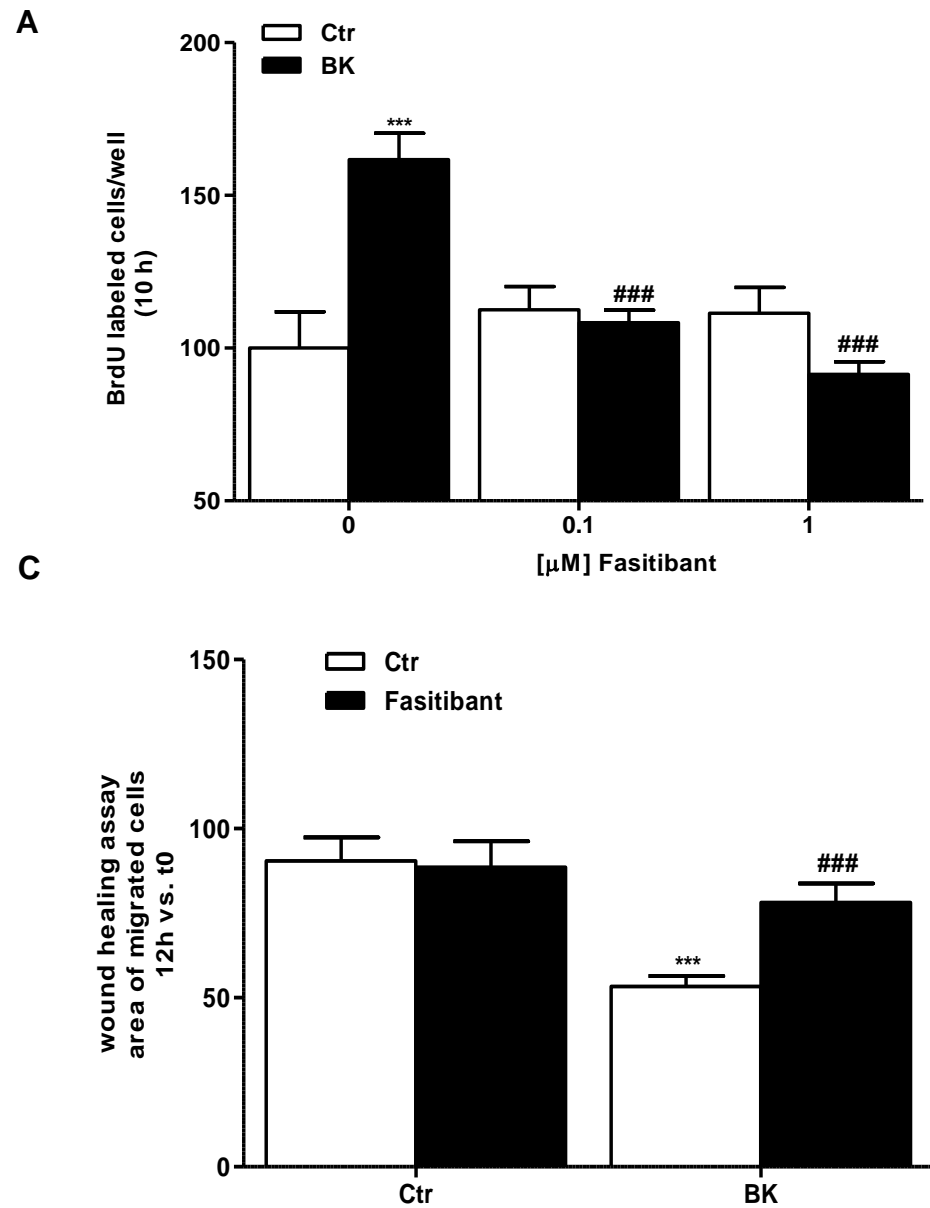
Figure S3

Figure S3 Fasitibant impairs endothelial cell growth and migration. (A) Cells were exposed to BK (1 μ M), or to BK in presence/absence of fasitibant (0.1-1 μ M) for 10 hrs and growth was evaluated by BrdU incorporation. Data are reported as cell number counted/well. Numbers represent mean \pm SEM of three experiments run in triplicate. (B) Scratch wound healing assay on HUVEC treated with 0.1% FBS (a), BK (1 μ M) (b), fasitibant (1 μ M) (c), fasitibant + BK (d). (C) Quantification of cell migration was reported as area of migrated cells. *** $p < 0.001$, compared to untreated cells; ### $p < 0.001$ to BK-treated cells. Numbers represent mean \pm SEM of three experiments run in triplicate.