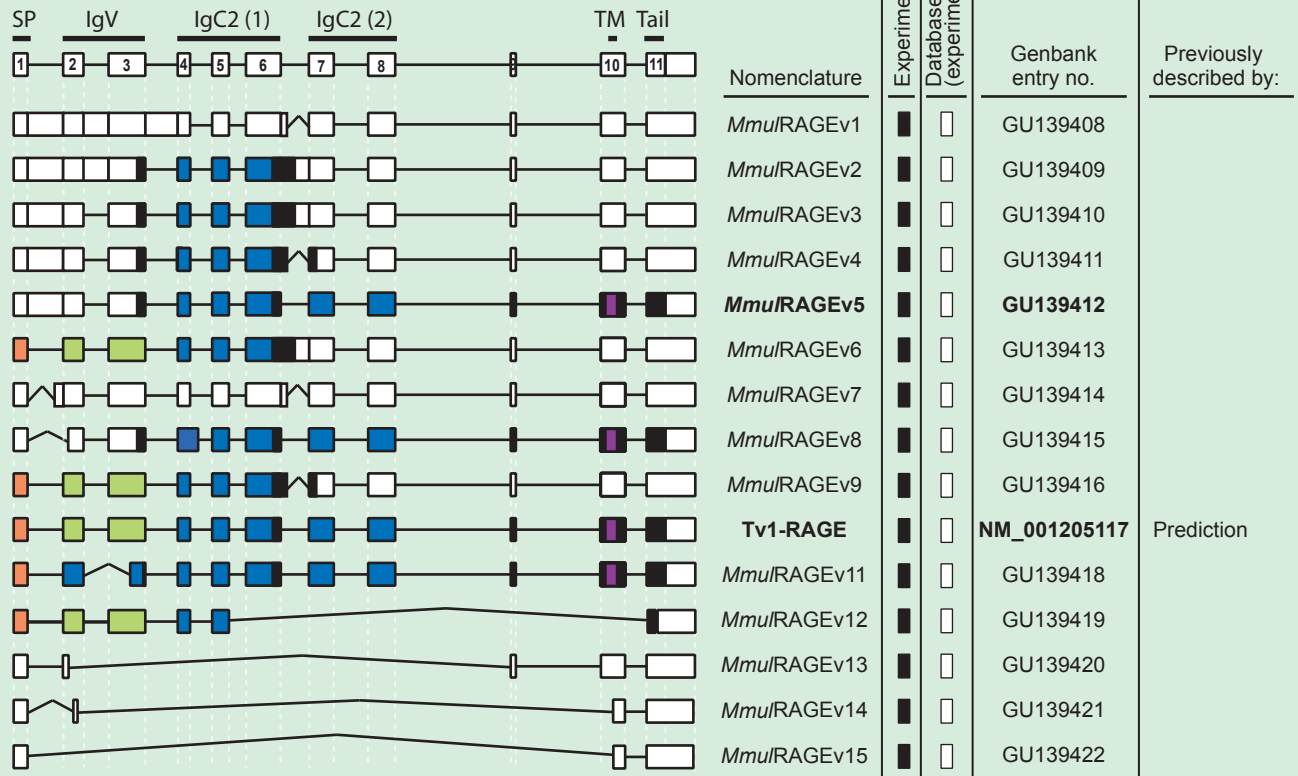


Homo sapiens

SP	IgV	IgC2 (1)	IgC2 (2)	TM	Tail	Nomenclature	Previous nomenclature (if changed)	Experimental	Databases (experimentally)	Genbank entry no.	Previously described by:
1	2 3	4 5 6	7 8	10	11	<i>Hsap</i> RAGEv1		█	□	GU139370	
						<i>Hsap</i> RAGEv2		█	□	GU139371	
						<i>Hsap</i> RAGEv3		█	□	GU139372	
						<i>Hsap</i> RAGEv4		█	□	GU139373	
						<i>Hsap</i> RAGEv5		█	□	GU139374	
						NtRAGEΔ		□	█	HQ148135	Ding and Keller 2005b
						<i>Hsap</i> RAGEv6		█	□	GU139375	
						Tv10-RAGE	N-truncated	█	█	NR_038190	Yonekura et al. 2003
						<i>Hsap</i> RAGEv7		█	□	GU139376	
						<i>Hsap</i> RAGEv8		█	□	GU139377	
						<i>Hsap</i> RAGEv9		█	□	GU139378	
						sRAGEΔ		□	█	HQ148134	Ding and Keller 2005b
						Tv2-RAGE	RAGE_v5	█	█	NM_001206929	Hudson et al. 2008
						Tv4-RAGE	RAGE_v6	█	█	NM_001206934	Hudson et al. 2008
						Tv1-RAGE		█	█	NM_001136	Neeper et al.1992
						RAGEΔ		□	█	HQ148133	Ding and Keller 2005b
						Tv6-RAGE	C-truncated	█	█	NM_001206940	Yonekura et al. 2003
						Tv9-RAGE	RAGE_v10	□	█	NM_001206966	Hudson et al. 2008
						Tv3-RAGE	RAGE_v4	□	█	NM_001206932	Hudson et al. 2008
						RAGE_v3		□	█	DQ104253	Hudson et al. 2008
						RAGE_v7		□	█	DQ104251	Hudson et al. 2008
						Tv5-RAGE	RAGE_v8	□	█	NM_001206936	Hudson et al. 2008
						Tv8-RAGE	RAGE_v9	□	█	NM_001206954	Hudson et al. 2008
						Tv7-RAGE		□	█	NM_172197	Malherbe et al. 1999
						RAGE_v12		█	█	AY755625	Hudson et al. 2008
						RAGE_v13		□	█	AY755627	Hudson et al. 2008
						RAGE_v11		█	█	AY755626	Hudson et al. 2008
						<i>Hsap</i> RAGEv10		█	□	GU139379	
						<i>Hsap</i> RAGEv11		█	□	GU139380	
						<i>Hsap</i> RAGEv12		█	□	GU139381	
						<i>Hsap</i> RAGEv13		█	□	GU139382	
						<i>Hsap</i> RAGEv14		█	□	GU139383	
						<i>Hsap</i> RAGEv15		█	□	GU139384	

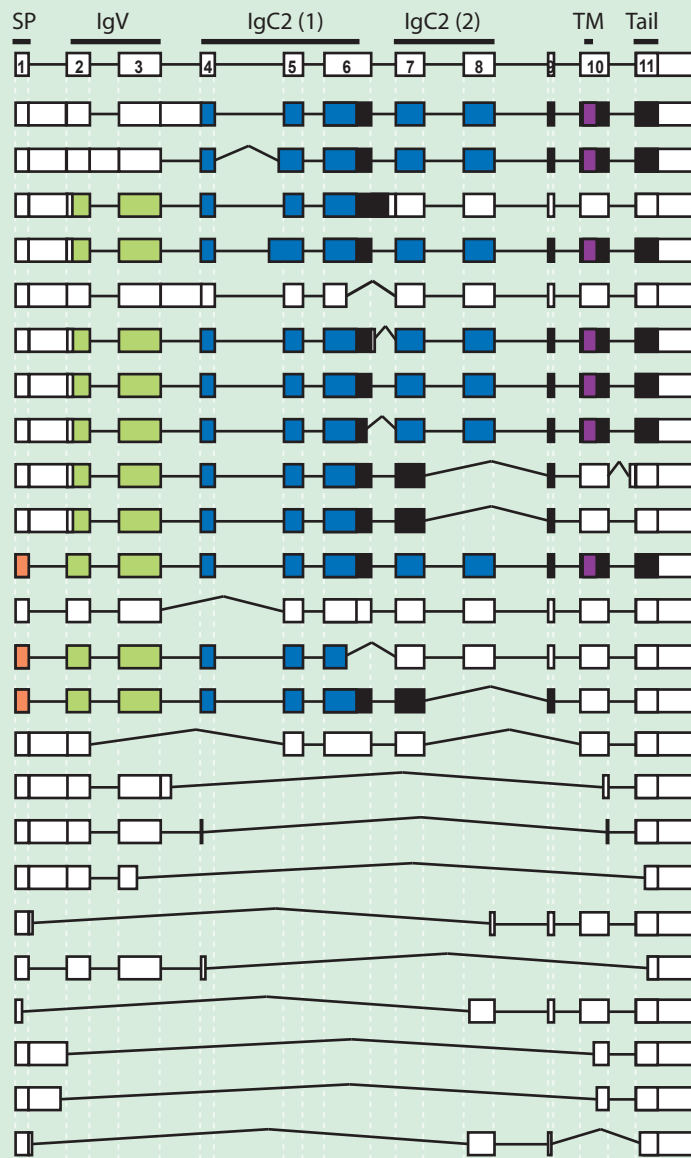
█ Signal peptide (SP) █ Ig constant (IgC2) domain █ Non-coding sequences
█ Ig variable (IgV) domain █ Transmembrane region (TM) █ Coding sequences

Macaca mulatta



█ Signal peptide (SP) █ Ig constant (IgC2) domain █ Non-coding sequences
█ Ig variable (IgV) domain █ Transmembrane region (TM) █ Coding sequences

Bos taurus



Nomenclature

*Btau*RAGEv1
*Btau*RAGEv2
*Btau*RAGEv3
*Btau*RAGEv4
*Btau*RAGEv5
*Btau*RAGEv6
***Btau*RAGEv7**
*Btau*RAGEv8
*Btau*RAGEv9
*Btau*RAGEv10
Tv1-RAGE
*Btau*RAGEv11
*Btau*RAGEv12
*Btau*RAGEv13
*Btau*RAGEv14
*Btau*RAGEv15
*Btau*RAGEv16
*Btau*RAGEv17
*Btau*RAGEv18
*Btau*RAGEv19
*Btau*RAGEv20
*Btau*RAGEv21
*Btau*RAGEv22
*Btau*RAGEv23

Experimental

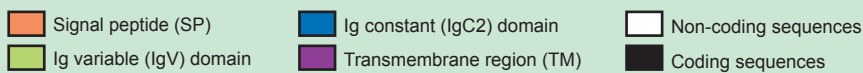
Databases
(experimentally)

Genbank
entry no.

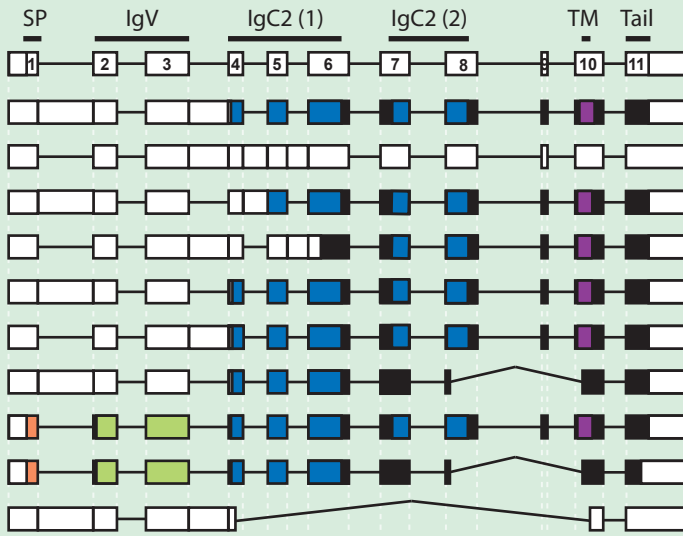
Previously
described by:

GU139385
 GU139386
 GU139387
 GU139388
 GU139389
 GU139390
GU139391
 GU139392
 GU139393
 GU139394
NM_173982
 GU139395
 GU139396
 GU139397
 GU139398
 GU139399
 GU139400
 GU139401
 GU139402
 GU139403
 GU139404
 GU139405
 GU139406
 GU139407

Neeper et al.1992



Sus scrofa



Nomenclature

SscrRAGEv1
SscrRAGEv2
SscrRAGEv3
SscrRAGEv4
SscrRAGEv5
SscrRAGEv6
SscrRAGEv7
Tv1-RAGE
SscrRAGEv8
SscrRAGEv9

Experimental

Databases
(experimentally)

Genbank
entry no.

Previously
described by:

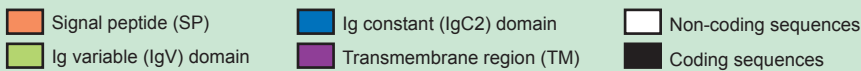
GU164706
 GU164707
 GU164708
 GU164709
GU164710
 GU164711
 GU164712
NM_001123218
 GU164713
 GU164714

Prediction

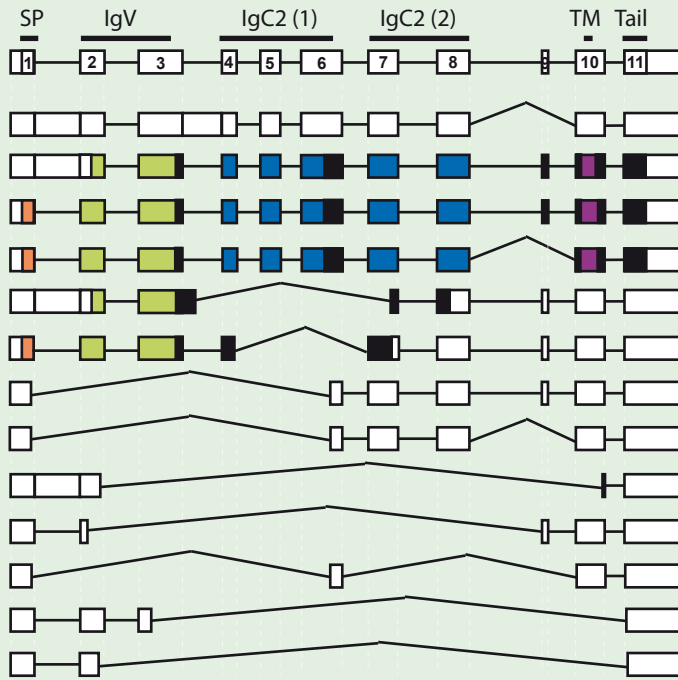
Signal peptide (SP)
 Ig constant (IgC2) domain
 Non-coding sequences
 Ig variable (IgV) domain
 Transmembrane region (TM)
 Coding sequences

Mus musculus

SP	IgV	IgC2 (1)	IgC2 (2)	TM	Tail	Nomenclature	Previous nomenclature (if changed)	Experimental Databases (experimentally)	Genbank entry no.	Previously described by:
1	2 3	4 5 6	7 8	10	11	mRAGE_v6		<input type="checkbox"/>	EU570245	Kalea et al. 2009
						mRAGE_v17		<input type="checkbox"/>	EU906865	Kalea et al. 2009
						mRAGE_v5		<input checked="" type="checkbox"/>	EU570244	Kalea et al. 2009
						mRAGE_v7		<input type="checkbox"/>	EU570246	Kalea et al. 2009
						mRAGE_v16		<input type="checkbox"/>	EU906864	Kalea et al. 2009
						esRAGE		<input type="checkbox"/>	AB207883	Harashima et al. 2006
						Tv6-RAGE	mRAGE_v2	<input checked="" type="checkbox"/>	NR_073175	Kalea et al. 2009
						Tv5-RAGE	mRAGE_v1	<input type="checkbox"/>	NR_073173	Kalea et al. 2009
						Tv7-RAGE	mRAGE_v8	<input type="checkbox"/>	NR_073176	Kalea et al. 2009
						Tv4-RAGE (d)	<i>MmusRAGEv1</i>	<input checked="" type="checkbox"/>	NM_001271424	
						Tv1-RAGE (a)		<input checked="" type="checkbox"/>	NM_007425	Canonical isoform
						Tv2-RAGE (b)	mRAGE_v4	<input checked="" type="checkbox"/>	NM_001271422	Kalea et al. 2009
						Tv3-RAGE (c)	mRAGE_v15	<input type="checkbox"/>	NM_001271423	Kalea et al. 2009
						<i>MmusRAGEv2</i>		<input checked="" type="checkbox"/>	GU164728	
						<i>MmusRAGEv3</i>		<input checked="" type="checkbox"/>	GU164729	
						<i>MmusRAGEv4</i>		<input checked="" type="checkbox"/>	GU164730	
						<i>MmusRAGEv5</i>		<input checked="" type="checkbox"/>	GU164731	
						<i>MmusRAGEv6</i>		<input checked="" type="checkbox"/>	GU164732	
						mRAGE_v14		<input type="checkbox"/>	EU906862	Kalea et al. 2009
						<i>MmusRAGEv7</i>		<input checked="" type="checkbox"/>	GU164733	
						mRAGE_v10		<input checked="" type="checkbox"/>	EU906858	Kalea et al. 2009
						<i>MmusRAGEv8</i>		<input checked="" type="checkbox"/>	GU164734	
						mRAGE_v9		<input type="checkbox"/>	EU906857	Kalea et al. 2009
						<i>MmusRAGEv9</i>		<input checked="" type="checkbox"/>	GU164735	
						mRAGE_v11		<input type="checkbox"/>	EU906859	Kalea et al. 2009
						<i>MmusRAGEv10</i>		<input checked="" type="checkbox"/>	GU164736	
						<i>MmusRAGEv11</i>		<input checked="" type="checkbox"/>	GU164737	
						mRAGE_v12		<input type="checkbox"/>	EU906860	Kalea et al. 2009
						<i>MmusRAGEv12</i>		<input checked="" type="checkbox"/>	GU164738	
						<i>MmusRAGEv13</i>		<input checked="" type="checkbox"/>	GU164739	
						mRAGE_v13		<input type="checkbox"/>	EU906861	Kalea et al. 2009



Rattus norvegicus



Nomenclature

RnorRAGEv1
RnorRAGEv2
Tv1-RAGE
RnorRAGEv3
RnorRAGEv4
RnorRAGEv5
RnorRAGEv6
RnorRAGEv7
RnorRAGEv8
RnorRAGEv9
RnorRAGEv10
RnorRAGEv11
RnorRAGEv12

Experimental	Databases (experimentally)
█	□
█	□
█	□
█	□
█	□
█	□
█	□
█	□
█	□
█	□
█	□
█	□
█	□
█	□

Genbank entry no.
 GU164715
GU164716
NM_053336
 GU164717
 GU164718
 GU164719
 GU164720
 GU164721
 GU164722
 GU164723
 GU164724
 GU164725
 GU164726

Previously described by:
 Prediction

