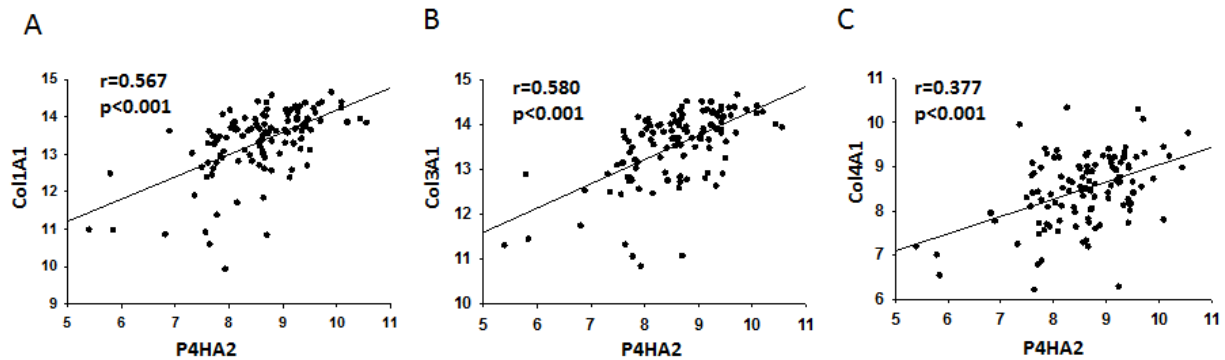
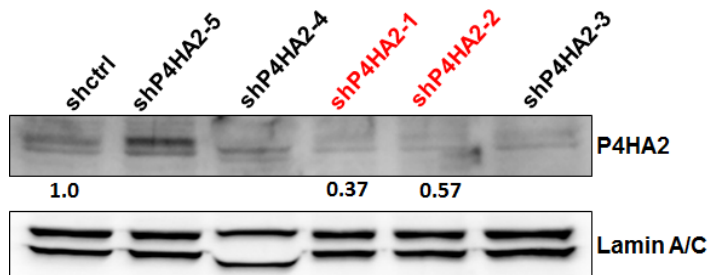


Supplemental Figure 1. Scatterplot of correlated mRNA levels between *P4HA2* and (A) *Col1A1*, (B) *Col3A1* and (C) *Col4A1*. Plots indicate the correlation between *P4HA2* and *Col1A1*, *Col3A1*, *Col4A1* expression in malignant breast tissues (n=118). The mRNA levels of *P4HA2* were acquired from the Chin K's breast cancer dataset [36].



Supplemental Figure 2. Five shP4HAs were tested in MDA-MB-231 cells by Western blot. ShP4HA2-1 and shP4HA2-2 showed best knockdown efficiency.



Supplemental Figure 3. Western blotting experiments shown P4HA2 knock out efficiency in shP4HA2-1 and shP4HA2-2 infected ZR-75-1 cells and MDA-MB-157 cells.

