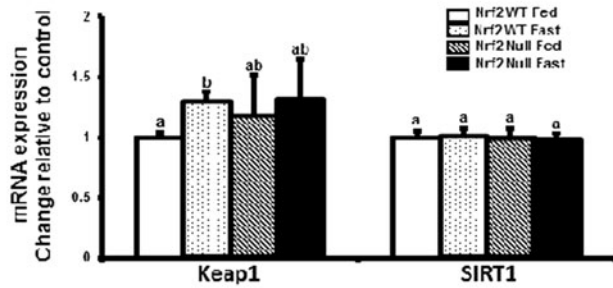
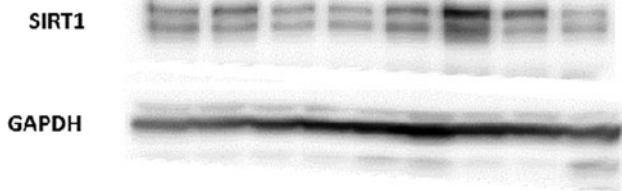


**A** Keap1 mRNA and SIRT1 mRNA in fed and fasted livers



**B** WT FED WT FAST Nrf2-NULL FED Nrf2-NULL FAST



**SUPPLEMENTARY FIG. S2. Effect of fasting on Kelch-like ECH-associated protein-1 (Keap1) mRNA and Sirtuin-1 (SIRT1) mRNA and protein expression in mouse liver-** (A) Total RNA was isolated from livers of Nuclear factor-E2 related factor 2 (Nrf2) wild-type (WT) and null, fed and fasted mice and gene expression of Keap1 was quantified by real time quantitative PCR and normalized to 18srRNA. The data are represented as average  $\pm$  SEM ( $n=6$ ) fold change over the fed controls. Fasting slightly increased Keap1 mRNA levels in WT mice. Fasting did not change SIRT1 mRNA expression. Groups without a common letter are significantly different. (B) Total liver homogenates were made from livers of Nrf2 WT and null mice either fed *ad libitum* or fasted for 24 h. The SIRT1 protein expression was quantified by western blotting with Gapdh as the loading control.