

Supplemental Material

**Gene-environment Interactions on Lung Function- A Genome-Wide Association Study in  
the Framingham Heart Study**

Shu-Yi Liao<sup>1</sup>, Xihong Lin<sup>1</sup>, David C. Christiani<sup>1,2</sup>

<sup>1</sup> Harvard School of Public Health, Boston, MA

<sup>2</sup> Harvard Medical School, Boston, MA

FigureS 1. Manhattan plot for interacting SNP with occupational exposure on FEV<sub>1</sub>

# Manhattan Plot

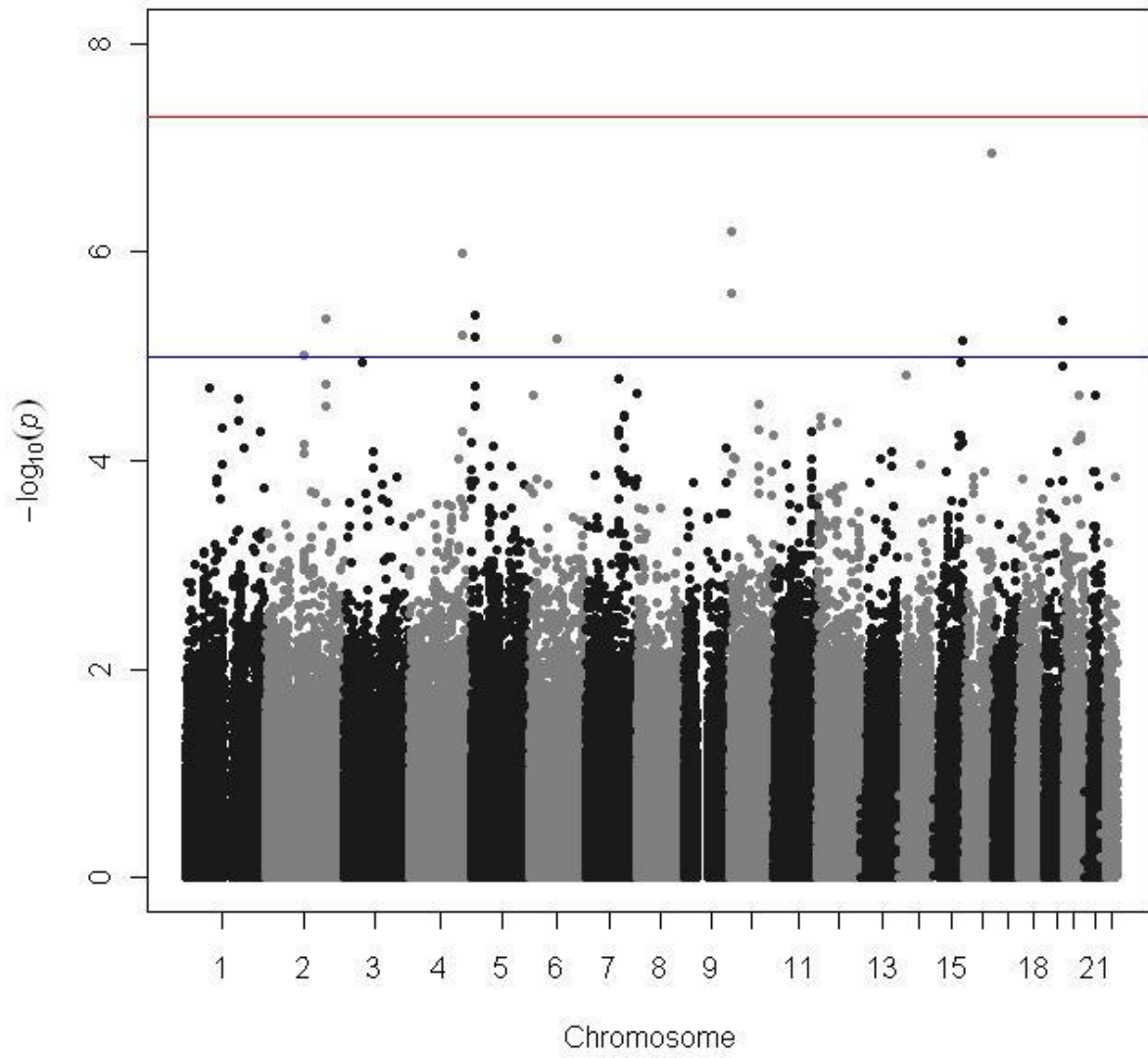


Figure S2. Manhattan plot for interacting SNP with occupational exposure on FEV<sub>1</sub>/FVC

# Manhattan Plot

