

Figure S2.2. Fit between observed age-specific HPV16 and 18 prevalence and the 100 best fitting estimated curves, by country.

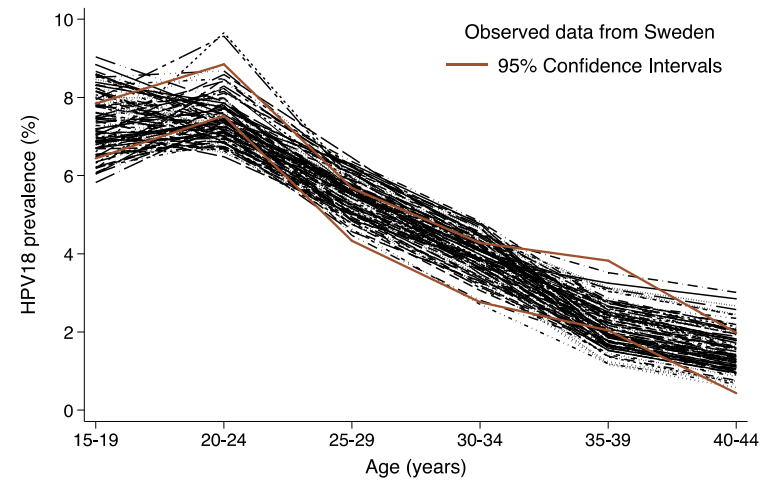
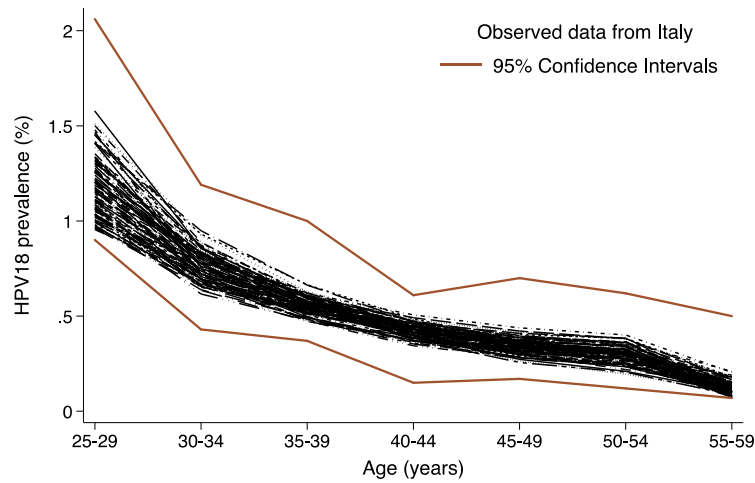
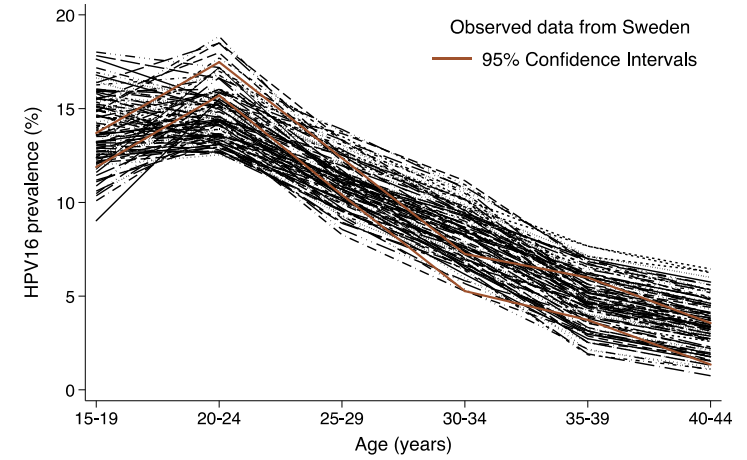
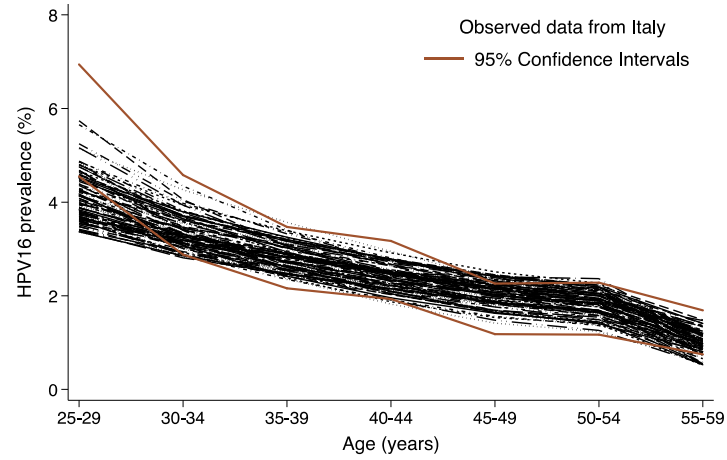


Figure S2.3. Fit between observed age-specific HPV31 and 33 prevalence and the 100 best fitting estimated curves, by country.

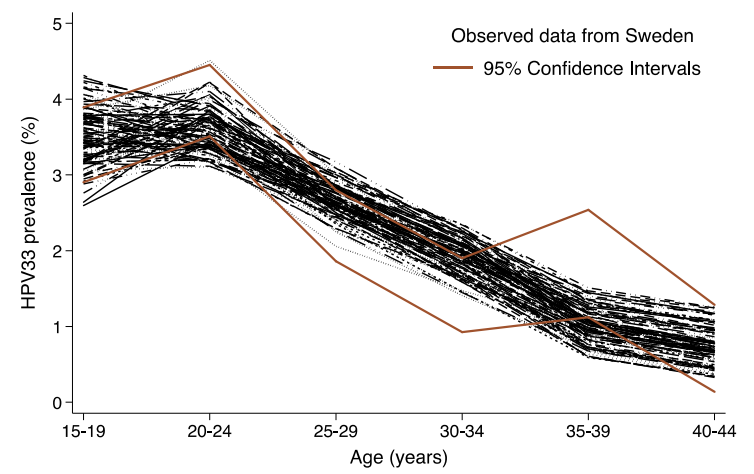
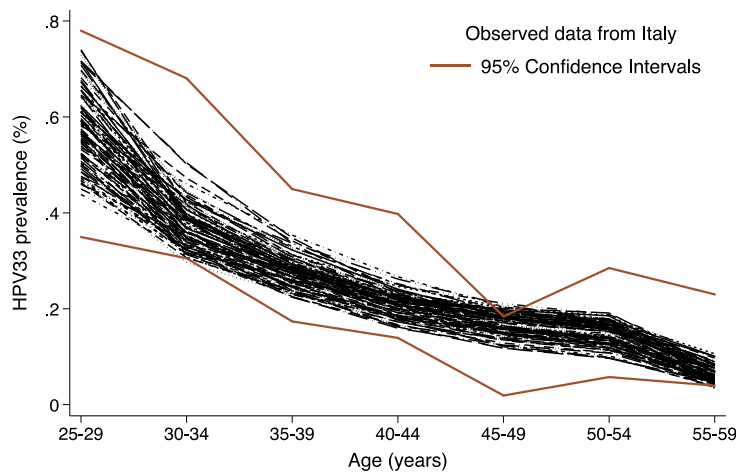
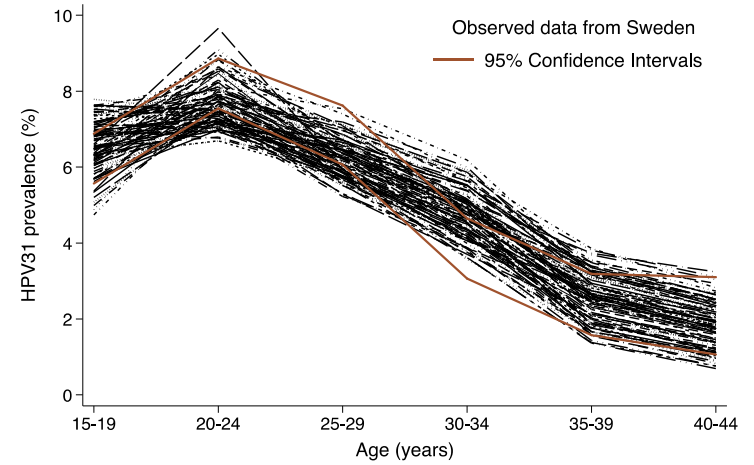
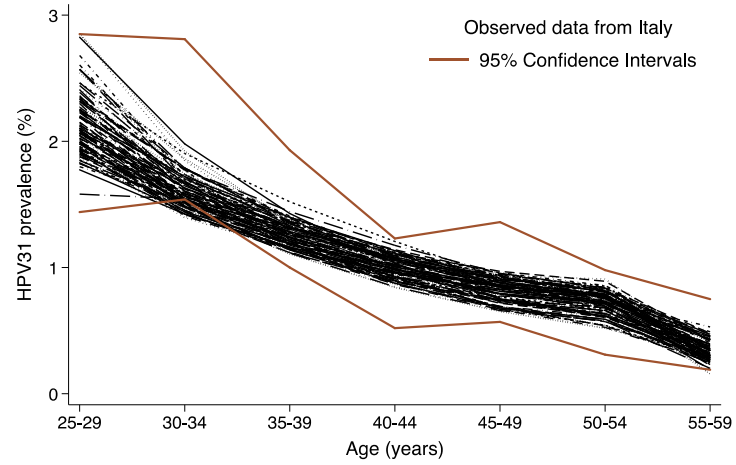


Figure S2.4. Fit between observed age-specific HPV35 and 39 prevalence and the 100 best fitting estimated curves, by country.

