

Figure S2.5. Fit between observed age-specific HPV45 and 51 prevalence and the 100 best fitting estimated curves, by country.

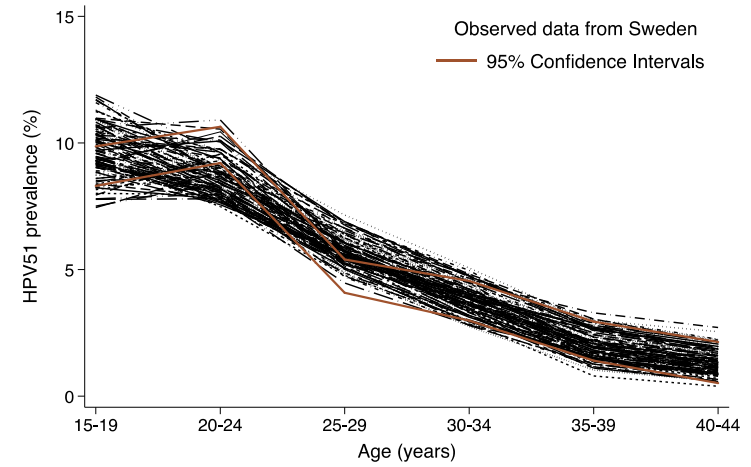
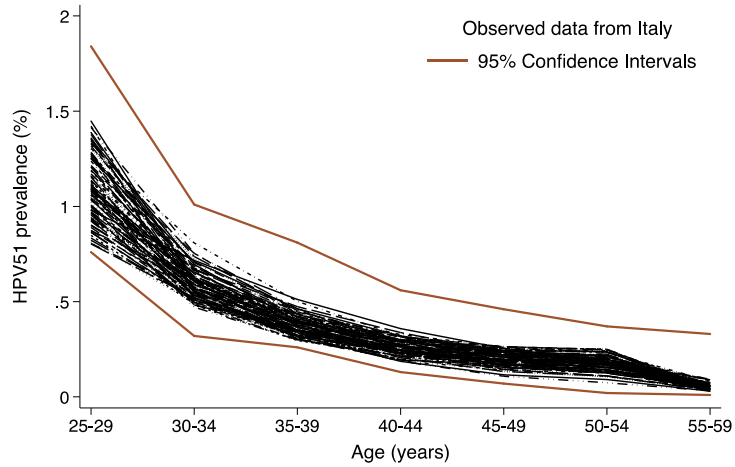
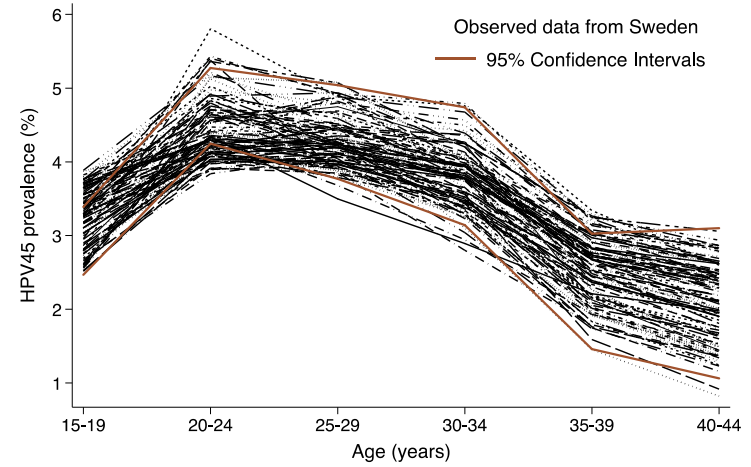
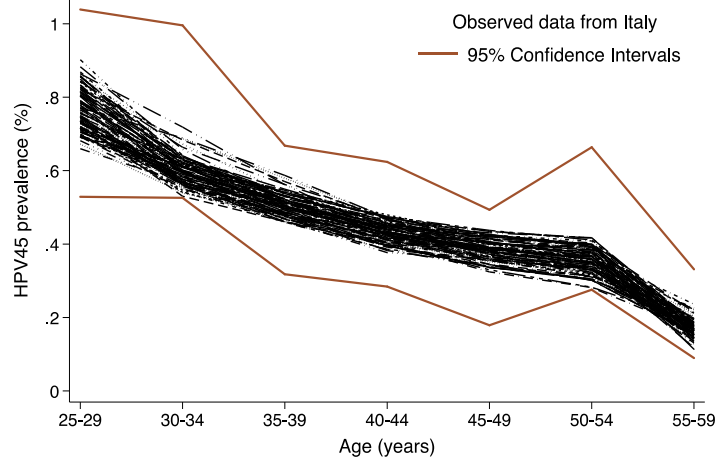


Figure S2.6. Fit between observed age-specific HPV52 and 56 prevalence and the 100 best fitting estimated curves, by country.

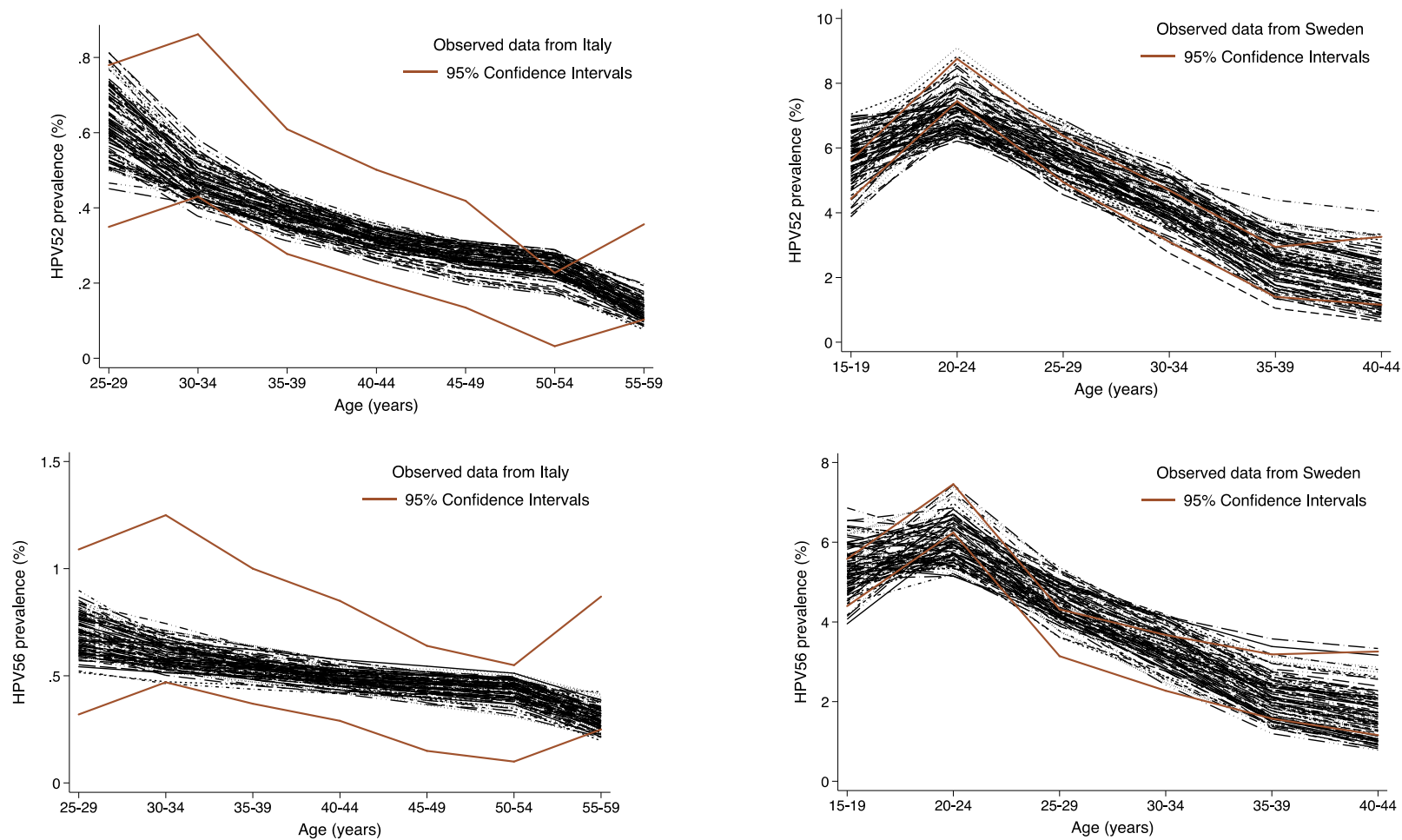


Figure S2.7. Fit between observed age-specific HPV58 and 59 prevalence and the 100 best fitting estimated curves, by country.

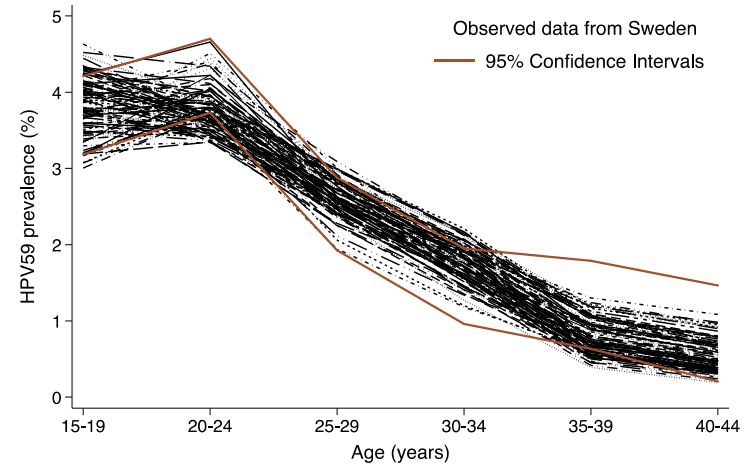
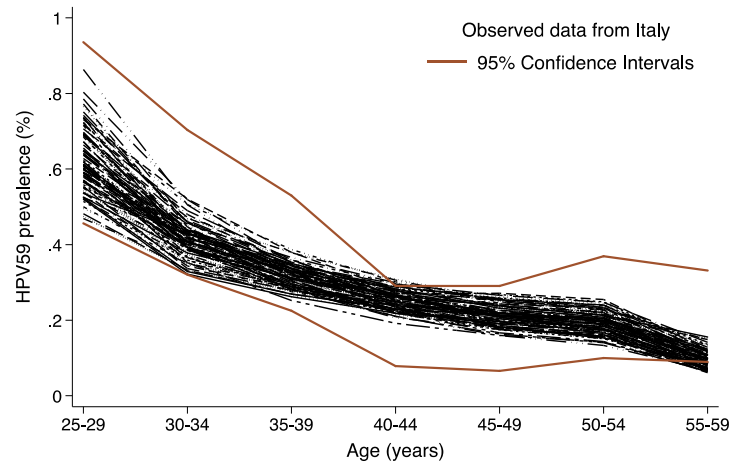
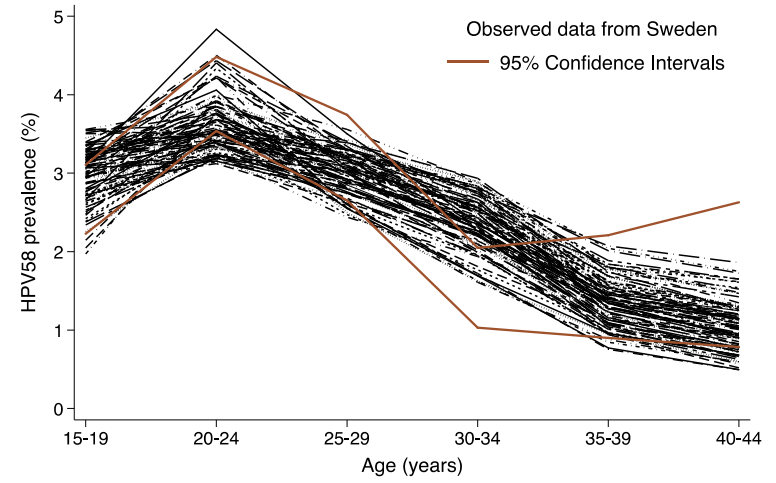
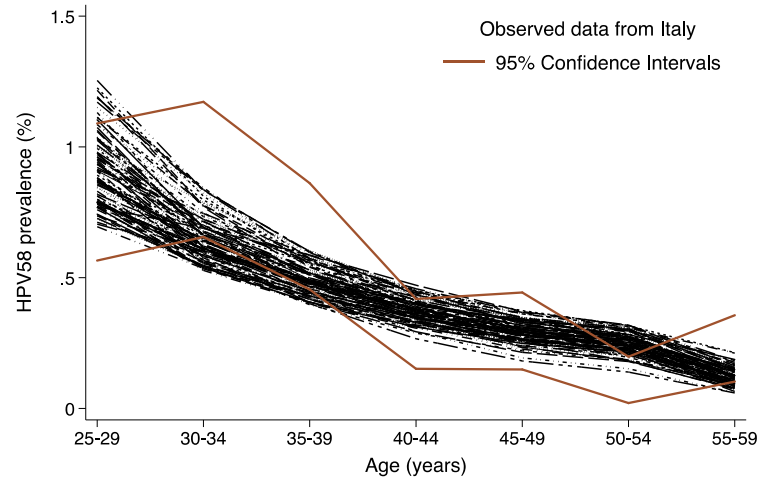


Figure S2.8. Fit between observed age-specific HPV68 prevalence and the 100 best fitting estimated curves, by country.

