

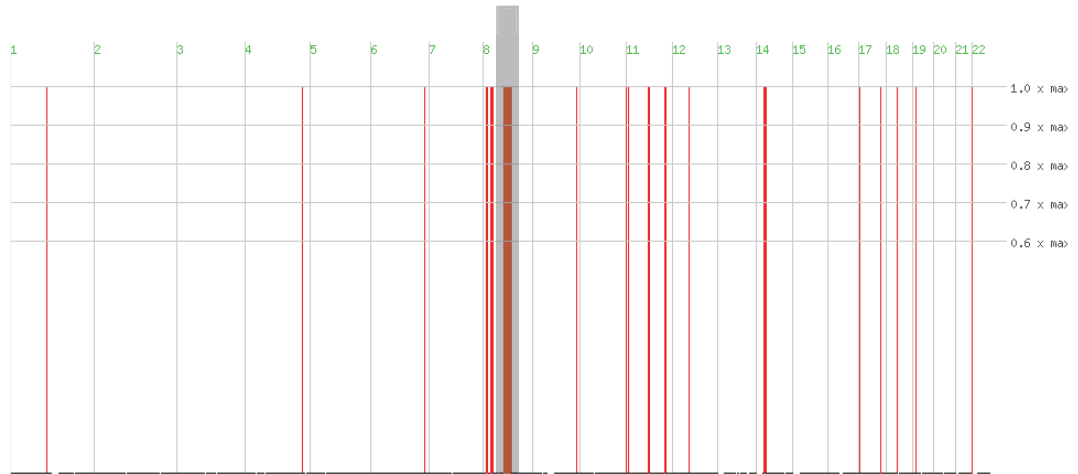
The American Journal of Human Genetics, Volume 94

## **Supplemental Data**

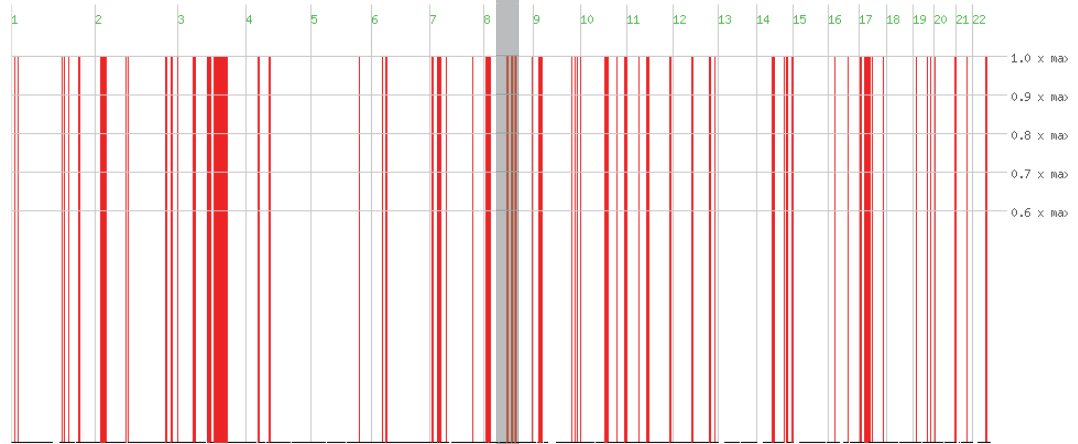
### **Mutations in *CSPP1* Lead to Classical Joubert Syndrome**

**Naiara Akizu, Jennifer L. Silhavy, Rasim Ozgur Rosti, Eric Scott, Ali G. Fenstermaker, Jana Schroth, Maha S. Zaki, Henry Sanchez, Neerja Gupta, Madhulika Kabra, Majdi Kara, Tawfeg Ben-Omran, Basak Rosti, Alicia Gomez-Gamboa, Emily Spencer, Roger Pan, Na Cai, Mostafa Abdellateef, Stacey Gabriel, Jan Halbritter, Friedhelm Hildebrandt, Hans van Bokhoven, Murat Gunel, and Joseph G. Gleeson**

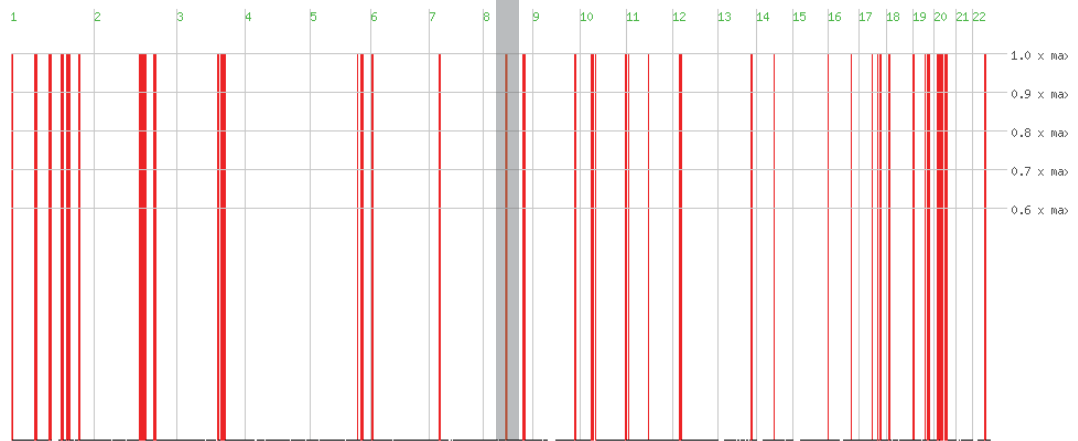
**MTI-136**



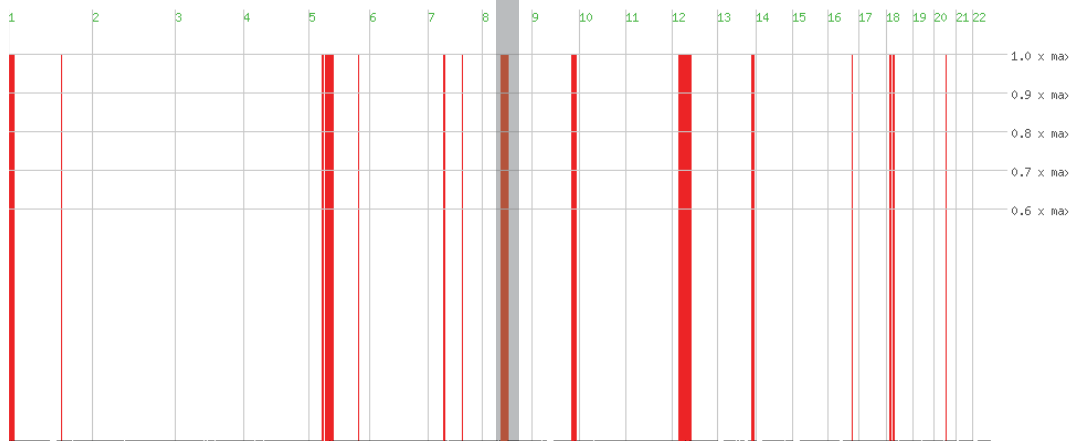
**MTI-1342**



**MTI-2109**



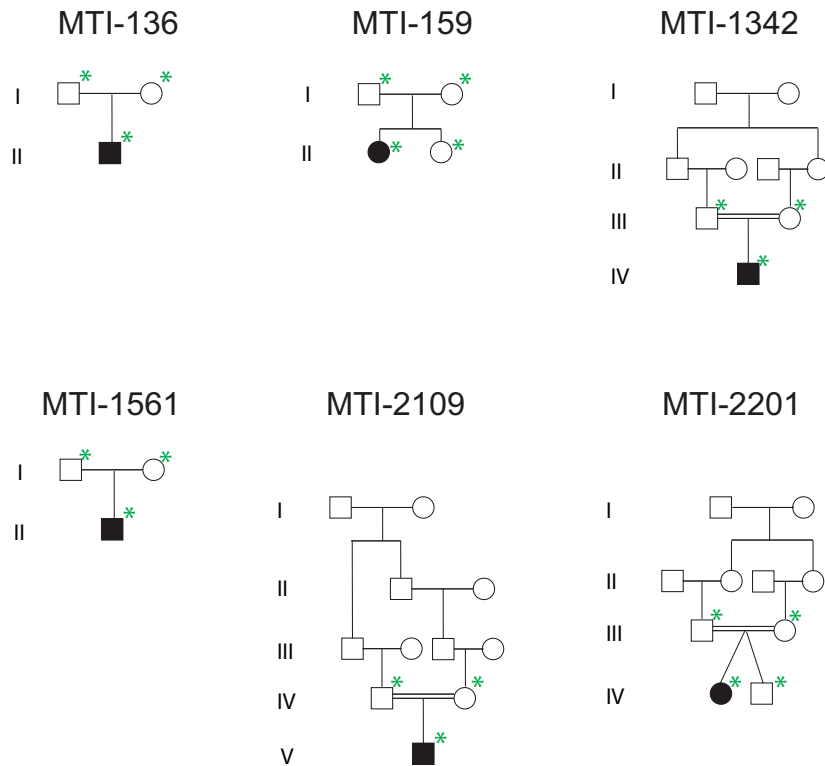
**MTI-2201**



↑  
**CSPP1**

**Figure S1. Homozygosity Map of Affected Individuals**

Homozygosity plots showing homozygous blocks (red) in affected individuals from families MTI-136, MTI-1342, MTI-2109, and MTI-2201, all with homozygous *CSPP1* mutations. Gray: homozygous block comprising *CSPP1*, overlaps in all affecteds. Arrow: location of *CSPP1*.



**Figure S2. Pedigrees with *CSPP1* Mutated Children with Joubert Syndrome**

MTI-1342, MTI-2109, and MTI-2201 are consanguineous families, and MTI-136, MTI-159, and MTI-1561 are nonconsanguineous. Green asterisk indicates individuals Sanger sequenced to test segregation.