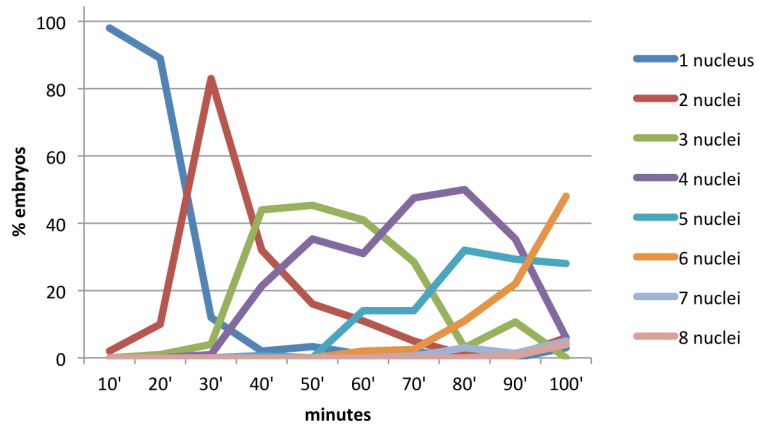


Supporting File S2

time	1 nucleus	2 nuclei	3 nuclei	4 nuclei	5 nuclei	6 nuclei	7 nuclei	8 nuclei	n
10'	98	2	0	0	0	0	0	0	100
20'	89	10	1	0	0	0	0	0	100
30'	12	83	4	1	0	0	0	0	100
40'	2	32	44	21.33	0.67	0	0	0	150
50'	3.33	16	45.33	35.33	0	0	0	0	150
60'	1	11	41	31	14	2	0	0	200
70'	2	5	28.5	47.5	14	2.5	0.5	0	200
80'	0	1	3	50	32	11	3	0	100
90'	0	0.67	10.67	35.33	29.33	22	1.33	0.67	150
100'	3	6	0	6	28	48	5	4	100

Percentage of embryos at every time point that have 1, 2, 3, 4, 5, 6, 7 or 8 nuclei.



Supporting File S2. Percentage of cleavage stage embryos from 0 to 100 minutes after egg activation that exhibit a given number of nuclei

Supporting File for: Jiménez-Guri, E., Wotton, K. R., Gavilán, B., & Jaeger, J. (2013). A staging scheme for the development of the moth midge *Clogmia albipunctata*. PLoS One.