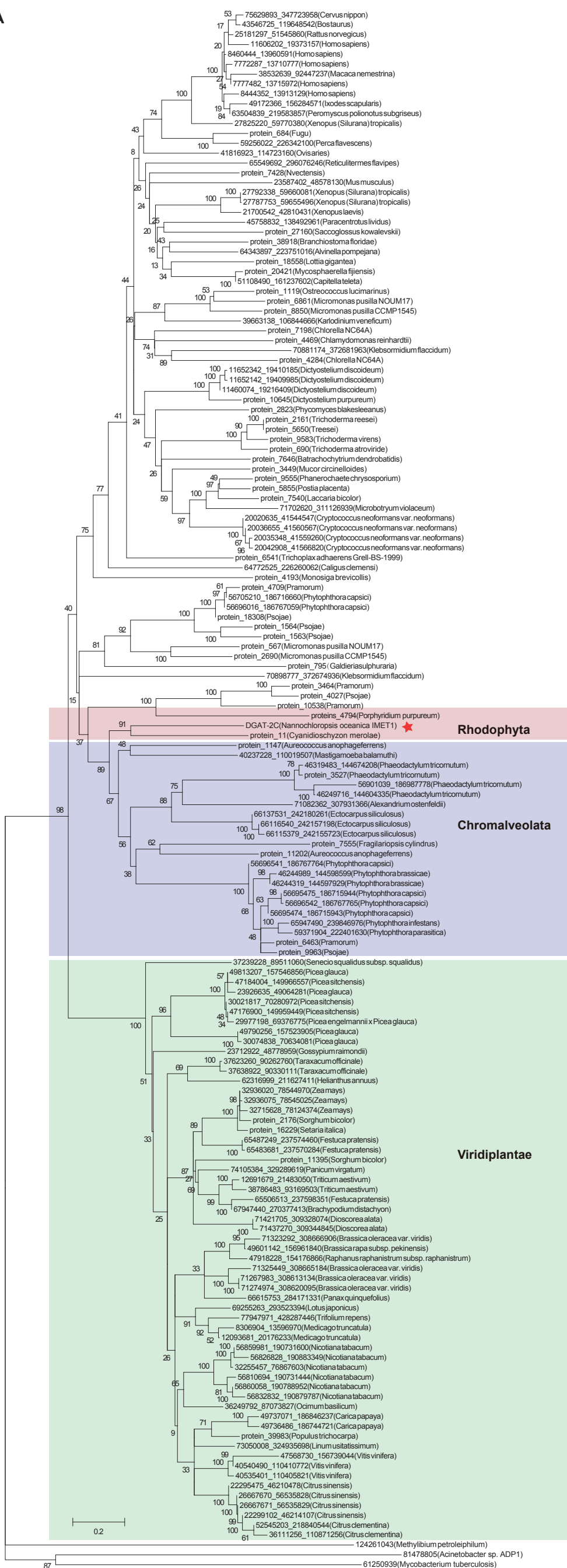
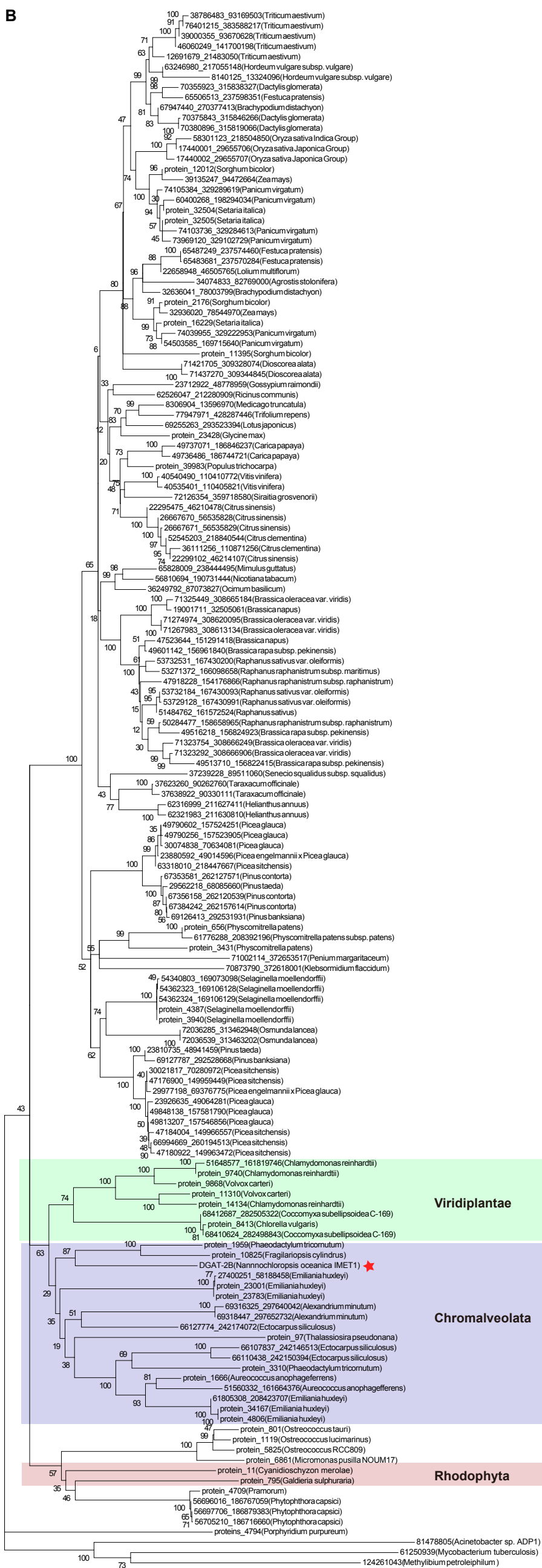


A



**B**

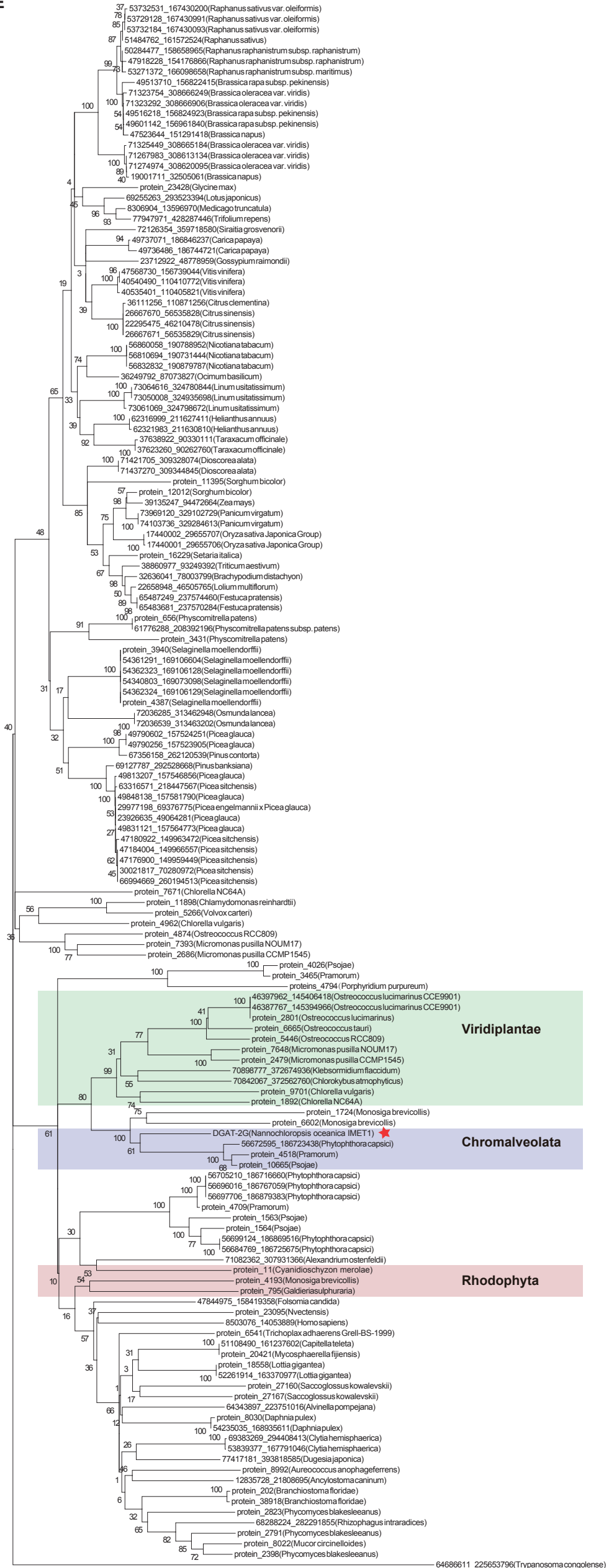
**C**

8306904\_13596970(Medicago truncatula)  
 12093603\_20176155(Medicago truncatula)  
 77947971\_426287446(Trifolium repens)  
 69255263\_293523394(Lotus japonicus)  
 protein\_23428(Glycine max)  
 58243328\_190509571(Vigna unguiculata)  
 72126354\_359718580(Siraitia grosvenorii)  
 7608125\_12490666(Glycine soja)  
 22295475\_46210478(Citrus sinensis)  
 26667670\_56535828(Citrus sinensis)  
 26667671\_56535829(Citrus sinensis)  
 52545203\_218840544(Citrus clementina)  
 36111256\_110871256(Citrus clementina)  
 22299102\_46214107(Citrus sinensis)  
 52517299\_209176338(Prunus persica)  
 17711160\_30131047(Vitis vinifera)  
 47568731\_156739053(Vitis vinifera)  
 47568730\_156739044(Vitis vinifera)  
 40540490\_110410772(Vitis vinifera)  
 40535401\_110405821(Vitis vinifera)  
 62526047\_212280909(Ricinus communis)  
 protein\_39983(Populus trichocarpa)  
 49737071\_186846237(Carica papaya)  
 49736486\_186744721(Carica papaya)  
 67912170\_311178405(Coffea arabica)  
 31204211\_78333783(Gossypium hirsutum)  
 23712922\_48778959(Gossypium raimondii)  
 34704554\_83915249(Lactuca serriola)  
 44069409\_124588496(Cichorium intybus)  
 62316999\_211627411(Helianthus annuus)  
 62321983\_211630810(Helianthus annuus)  
 37638922\_90330111(Taraxacum officinale)  
 37623260\_90262760(Taraxacum officinale)  
 36249791\_87073826(Ocimum basilicum)  
 36249792\_87073827(Ocimum basilicum)  
 65828009\_238444495(Mimulus guttatus)  
 56859981\_190731600(Nicotiana tabacum)  
 56826828\_190883349(Nicotiana tabacum)  
 32255457\_76867603(Nicotiana tabacum)  
 56810694\_190731444(Nicotiana tabacum)  
 56832832\_190879787(Nicotiana tabacum)  
 56860058\_190788952(Nicotiana tabacum)  
 19001711\_32505061(Brassica napus)  
 71325449\_308665184(Brassica oleracea var. viridis)  
 71274974\_308620095(Brassica oleracea var. viridis)  
 71267983\_308611334(Brassica oleracea var. viridis)  
 49601142\_156961840(Brassica rapa subsp. pekinensis)  
 47523644\_151291418(Brassica napus)  
 53736572\_167431985(Raphanus sativus var. oleiformis)  
 53271372\_166098658(Raphanus raphanistrum subsp. maritimus)  
 53732531\_167430200(Raphanus sativus var. oleiformis)  
 53732184\_167430093(Raphanus sativus var. oleiformis)  
 53729128\_167430991(Raphanus sativus var. oleiformis)  
 51484762\_161572524(Raphanus sativus)  
 47918228\_154176866(Raphanus raphanistrum subsp. raphanistrum)  
 53745998\_167446850(Raphanus sativus)  
 49516218\_156824923(Brassica rapa subsp. pekinensis)  
 50284477\_158658965(Raphanus raphanistrum subsp. raphanistrum)  
 71323754\_308666249(Brassica oleracea var. viridis)  
 71323292\_308666906(Brassica oleracea var. viridis)  
 49513710\_156822415(Brassica rapa subsp. pekinensis)  
 71421705\_309328074(Dioscorea alata)  
 71437270\_309344845(Dioscorea alata)  
 71464128\_309598159(Dioscorea alata)  
 71464870\_309603860(Dioscorea alata)  
 27466941\_58315158(Zantedeschia aethiopica)  
 protein\_11395(Sorghum bicolor)  
 65487249\_237574460(Festuca pratensis)  
 65483681\_237570284(Festuca pratensis)  
 22658948\_46505765(Lolium multiflorum)  
 32636041\_78003799(Brachypodium distachyon)  
 38860977\_93249392(Triticum aestivum)  
 14572977\_24276105(Hordeum vulgare subsp. vulgare)  
 protein\_16229(Setaria italica)  
 protein\_2176(Sorghum bicolor)  
 74039955\_329222953(Panicum virgatum)  
 58313802\_218493324(Oryza sativa Indica Group)  
 67947440\_270377413(Brachypodium distachyon)  
 65506513\_237598351(Festuca pratensis)  
 63246980\_217055148(Hordeum vulgare subsp. vulgare)  
 12691679\_21483050(Triticum aestivum)  
 60408194\_198304924(Panicum virgatum)  
 74041832\_329220777(Panicum virgatum)  
 74008761\_329192472(Panicum virgatum)  
 protein\_12012(Sorghum bicolor)  
 74105384\_329289619(Panicum virgatum)  
 protein\_32504(Setaria italica)  
 protein\_32505(Setaria italica)  
 60400268\_198294034(Panicum virgatum)  
 70873790\_372618001(Klebsormidium flaccidum)  
 protein\_3940(Selaginella moellendorffii)  
 54340803\_169073098(Selaginella moellendorffii)  
 protein\_4397(Selaginella moellendorffii)  
 54362323\_169106128(Selaginella moellendorffii)  
 54362324\_169106129(Selaginella moellendorffii)  
 54361292\_169106605(Selaginella moellendorffii)  
 72036285\_313462948(Osmundalanea)  
 72036539\_313463202(Osmundalanea)  
 protein\_3431(Phycomitrella patens)  
 protein\_656(Phycomitrella patens)  
 61776288\_208392196(Phycomitrella patens subsp. patens)  
 30074838\_70634081(Picea glauca)  
 49790256\_157523905(Picea glauca)  
 49790602\_157524251(Picea glauca)  
 63318010\_218447667(Picea sitchensis)  
 67353581\_262127571(Pinus contorta)  
 67356158\_262120539(Pinus contorta)  
 69126413\_292531931(Pinus banksiana)  
 69127787\_292528668(Pinus banksiana)  
 23810799\_48941523(Pinus taeda)  
 30021817\_70280972(Picea sitchensis)  
 47178900\_149959449(Picea sitchensis)  
 29977198\_69376775(Picea engelmannii x Picea glauca)  
 23926635\_49064281(Picea glauca)  
 49813207\_157546856(Picea glauca)  
 49848138\_157581790(Picea glauca)  
 47184004\_149966557(Picea sitchensis)  
 66994669\_260194513(Picea sitchensis)  
 47180922\_149963472(Picea sitchensis)  
 71002114\_372653517(Penium margaritaceum)  
 proteins\_4794(Porphyrindium purpureum)  
 protein\_27160(Saccoglossus kowalevskii)  
 protein\_3449(Mucor circinelloides)  
 protein\_6541(Trichoplax adhaerens Grell-BS-1999)  
 59355568\_194654365(Lepeophtheirus salmonis)  
 59355569\_194654366(Lepeophtheirus salmonis)  
 protein\_795(Galdieriasulphuraria)  
 protein\_111(Cyanidioschyzon merolae)  
 protein\_567(Micromonas pusilla NOUM17)  
 protein\_1564(Psojoe)  
 protein\_4709(Pramorum)  
 protein\_34167(Emiliania huxleyi)  
 protein\_4806(Emiliania huxleyi)  
 67122881\_261441356(Emiliania huxleyi)  
 protein\_1666(Aureococcus anophagefferens)  
 protein\_3310(Phaeodactylum tricornutum)  
 69316325\_297640042(Alexandrium minutum)  
 protein\_10825(Fragilariopsis cylindrus)  
 50096526\_161448013(Hordeum vulgare subsp. vulgare)  
 50096527\_161448014(Hordeum vulgare subsp. vulgare)  
 DGAT-2A(Nannochloropsis oceanica IMET1) ★  
 protein\_8413(Chlorella vulgaris)  
 68410624\_282498843(Coccomyxa subellipsoidea C-169)  
 68412687\_282505322(Coccomyxa subellipsoidea C-169)  
 protein\_11310(Volvox carter)  
 protein\_14134(Chlamydomonas reinhardtii)  
 protein\_9868(Volvox carter)  
 51648577\_161819746(Chlamydomonas reinhardtii)  
 protein\_9740(Chlamydomonas reinhardtii)

**D**



E



02

F

