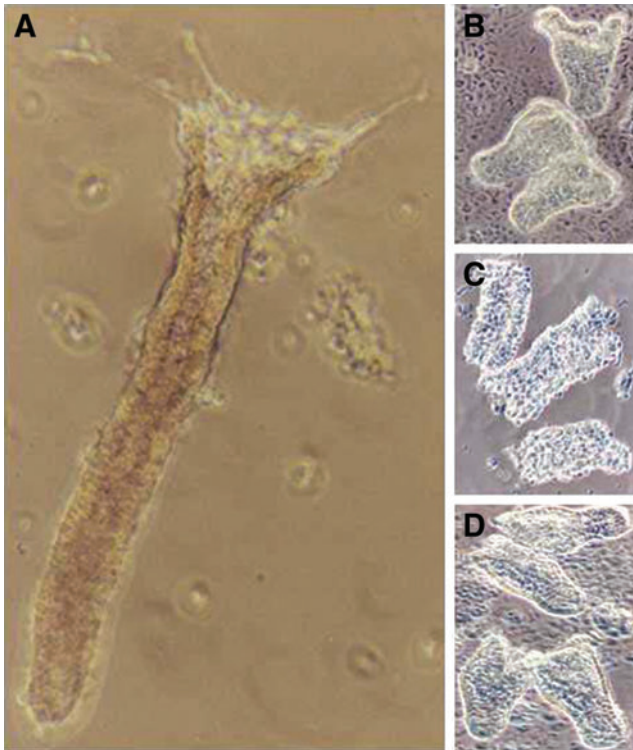


Supplementary Data



SUPPLEMENTARY FIG. S1. Purified colonic crypts and extracted crypt subsections in suspension. Isolated crypts contain only live epithelial cells and are free from other contaminating cell types. Images were taken at 10 \times magnification. **(A)** Whole crypts were isolated from normal colonic mucosa in 3 mM EDTA, pH 8 in 1 \times DPBS. **(B)** Crypt top subsections extracted from normal colonic mucosa in 0.1 mM EDTA, pH 8 in 1 \times DPBS. **(C)** Middle crypt subsections extracted from normal colonic mucosa in 0.5 mM EDTA, pH 8 in 1 \times DPBS. **(D)** Bottom crypt subsections extracted from normal colonic mucosa in 3 mM EDTA, pH 8 in 1 \times DPBS. DPBS, Dulbecco's phosphate buffered saline.