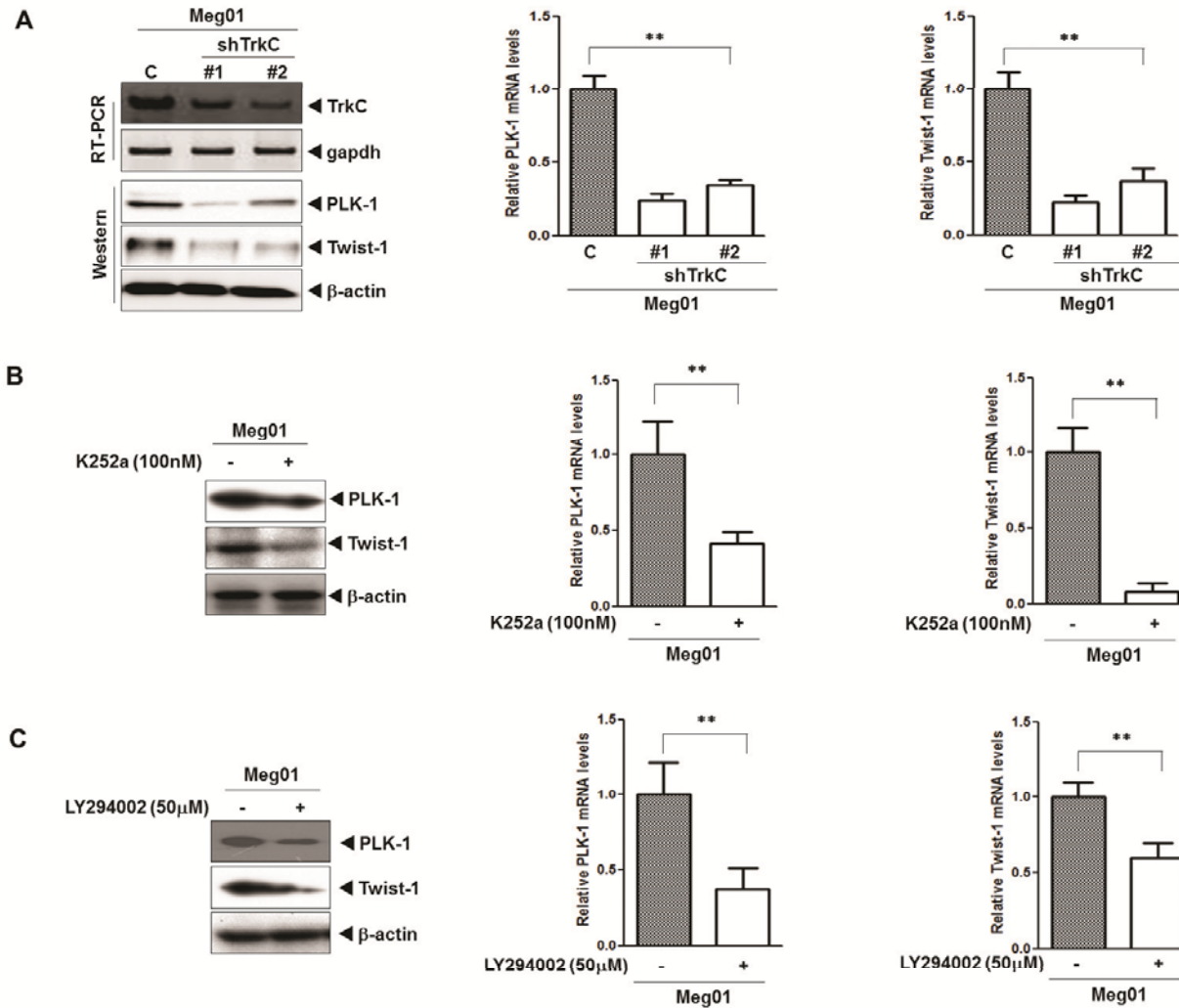


**Supplementary Figure 1.** TrkC induces PLK-1 and Twist-1 through Akt activation. (A) The relative expression levels of PLK-1, and Twist-1 was examined with immunoblotting and quantitative RT-PCR in ML-1 control-shRNA or ML-1 TrkC-shRNA cells. The data are reported as the mean  $\pm$  SEM.  $**P < 0.05$  as determined by the Student's t-test. (B) The relative expression levels of PLK-1, and Twist-1 was examined with immunoblotting and quantitative RT-PCR in ML-1 cells after K252a treatment. The data are reported as the mean  $\pm$  SEM.  $**P < 0.05$  as determined by a Student's t-test. (C) The relative expression levels of PLK-1, and Twist-1 was examined with immunoblotting and quantitative RT-PCR in ML-1 cells after LY294002 treatment. The data are reported as the mean  $\pm$  SEM.  $**P < 0.05$  as determined by a Student's t-test.



**Supplementary Figure 2.** TrkC induces PLK-1 and Twist-1. (A) The relative expression levels of PLK-1, and Twist-1 was examined with immunoblotting and quantitative RT-PCR in Meg01 control-shRNA or Meg01 TrkC-shRNA cells. The data are reported as the mean  $\pm$  SEM.  $**P < 0.05$  as determined by the Student's t-test. (B) The relative expression levels of PLK-1, and Twist-1 was examined with immunoblotting and quantitative RT-PCR in Meg01 cells after K252a treatment. The data are reported as the mean  $\pm$  SEM.  $**P < 0.05$  as determined by a Student's t-test. (C) The relative expression levels of PLK-1, and Twist-1 was examined with immunoblotting and quantitative RT-PCR in Meg01 cells after LY294002 treatment. The data are reported as the mean  $\pm$  SEM.  $**P < 0.05$  as determined by a Student's t-test.

**Supplementary Table 1. shRNA sequences of human TrkC genes.**

Gene name	Primer sequences	Vector
TrkC #1	5'- CCGGCTGGGTGAGGGAGCCTTTG CTCGAG CAAAGGCTCCCTCACCCAGTTTTTG-3'	pLKO
TrkC #2	5'- CCGGATGCTCCACATTGCCAGTC CTCGAG GACTGGCAATGTGGAGCATTTTTTG-3'	pLKO

**Supplementary Table 2. Quantitative RT-PCR primers for SYBR-GREEN.**

Gene name	Primer sequences
PLK-1	Plk1 Forward: 5'- GGCAACCTTTTCCTGAATGA-3 Plk1 Reverse: 5'- TCCCACACAGGGTCCTTCTTC-3
Twist-1	Twist-1 Forward: 5'- CGACGAGCTGGACTCCAAG-3 Twist-1 Reverse: 5'- CCTCCATCCTCCAGACCGA-3
18S	18S Forward: 5'- ACCGCAGCTAGGAATAATGGA-3 18S Reverse: 5'- GCCTCAGTTCCGAAA ACCA-3