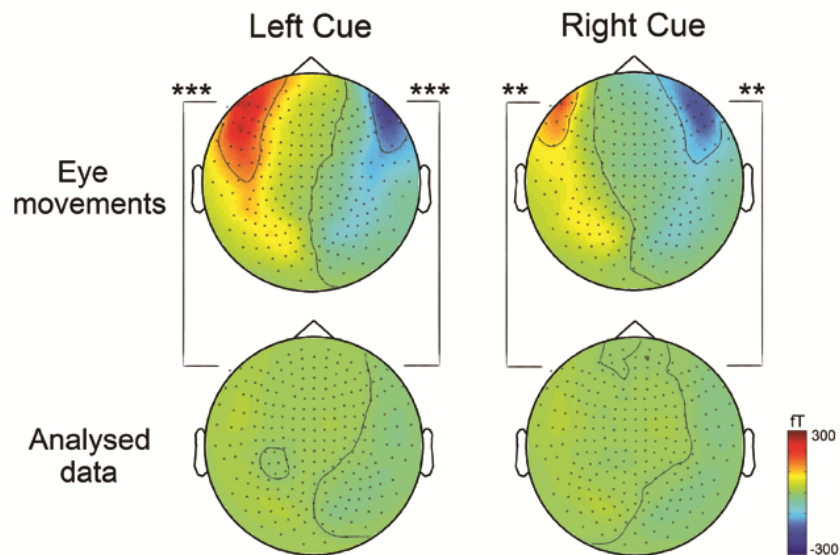


Supplementary Figure 1



Suppl. Figure 1. Eye movements analysis. Topography of the artifact generated by eye movements to the cued location (top panel). The bottom panel shows the absence of this artifact in the data that was subsequently analysed. The amplitude of the magnetic field in the fronto-temporal sensors showing maximal activity was significantly higher in the eye movements data compared to the analysed data. ** $p < .01$; *** $p < .001$.