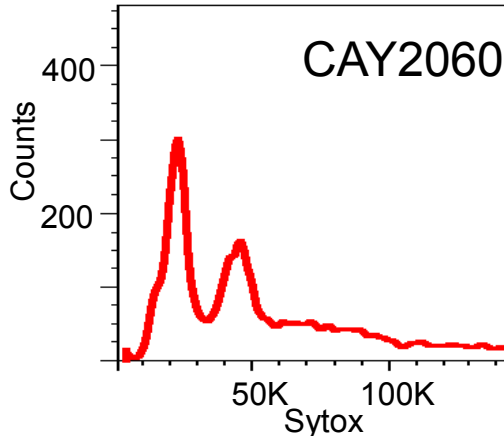
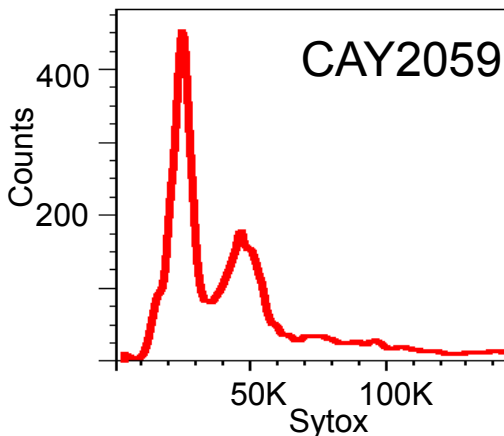
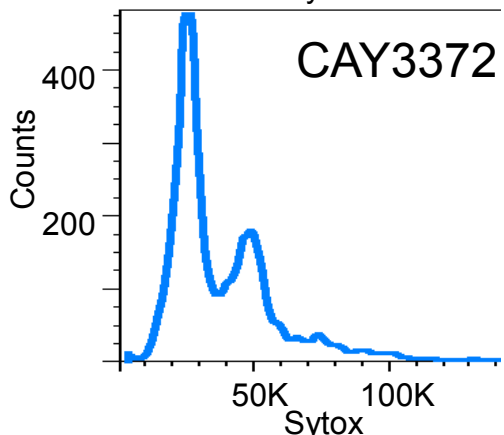
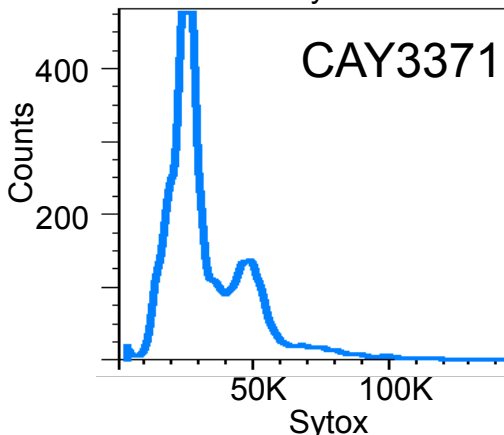


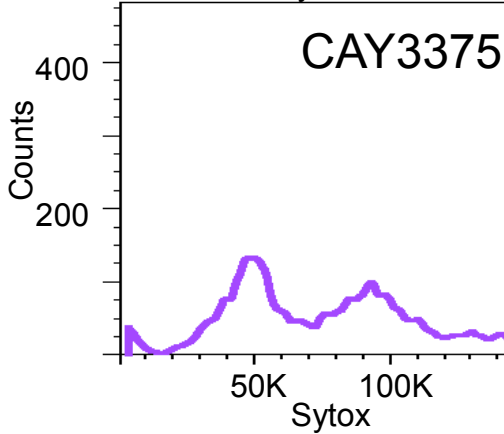
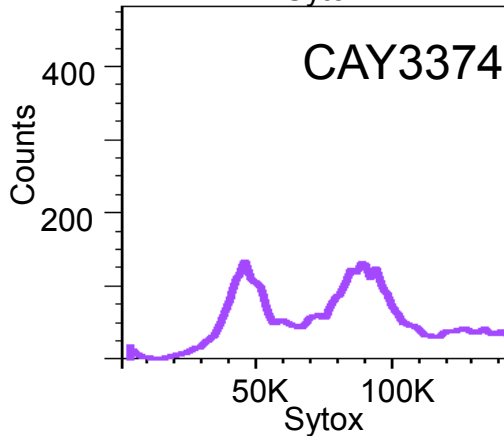
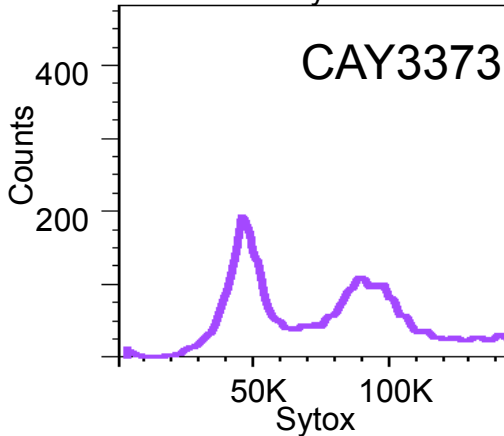
Diploid *MTLa*



Diploid *MTLa*



Tetraploid *MTLa/α*



Cell cytometric analysis of diploid parent strains and tetraploid progeny.

The x-axis (Sytox) represents a linear scale of fluorescence, and the y-axis represents a linear scale of cell number. Red lines denote ploidy profiles of *MTLa* parental strains, and blue lines denote ploidy profiles of *MTLa* parental strains. Purple lines denote ploidy profiles of tetraploid progeny.