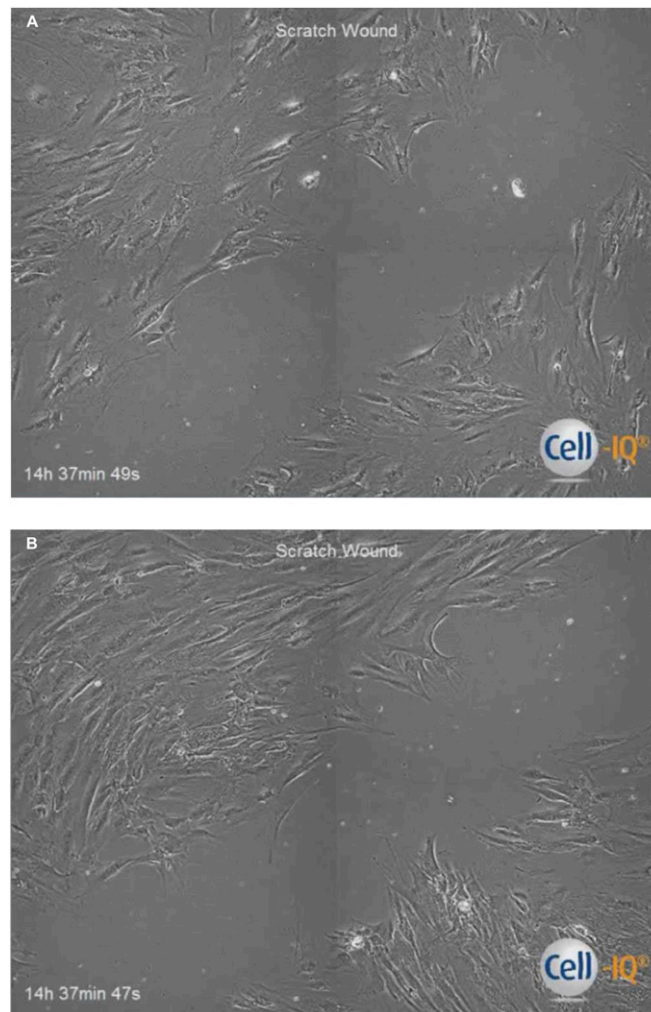


Supporting Information

You et al. 10.1073/pnas.1311239111



Movie S1. Real-time dynamics of fibroblast-like synoviocyte (FLS) migration. Confluent cultures of rheumatoid arthritis (RA)-FLSs transfected with POSTN siRNA (A) or control siRNA (B) were scratched, and wound closure was examined over a period of 50 h. Images were taken with Cell-IQ.

[Movie S1A](#)

[Movie S1B](#)

Dataset S1. Lists of the differentially expressed genes (DEGs) in RA-FLS, RA-synovial macrophages (RA-SMs), and IL-1 β -stimulated RA-FLSs. The list of the DEGs from each comparison includes Entrez ID, gene description, *P* value, and log₂-fold change

[Dataset S1](#)

Other Supporting Information Files

[SI Appendix \(PDF\)](#)