

C14: metacaspases (E=1x10⁻⁴⁰)

- Node color: Organism**
- ◻ protozoan parasite
 - ◻ helminth
 - ◻ animal
 - ◻ green plant
 - ◻ fungi
 - ◻ other eukaryote
 - ◻ bacteria
 - ◻ archaeobacteria
 - ◻ virus
- Node shape: Nucleophile**
- cysteine
 - △ serine
 - ◻ other

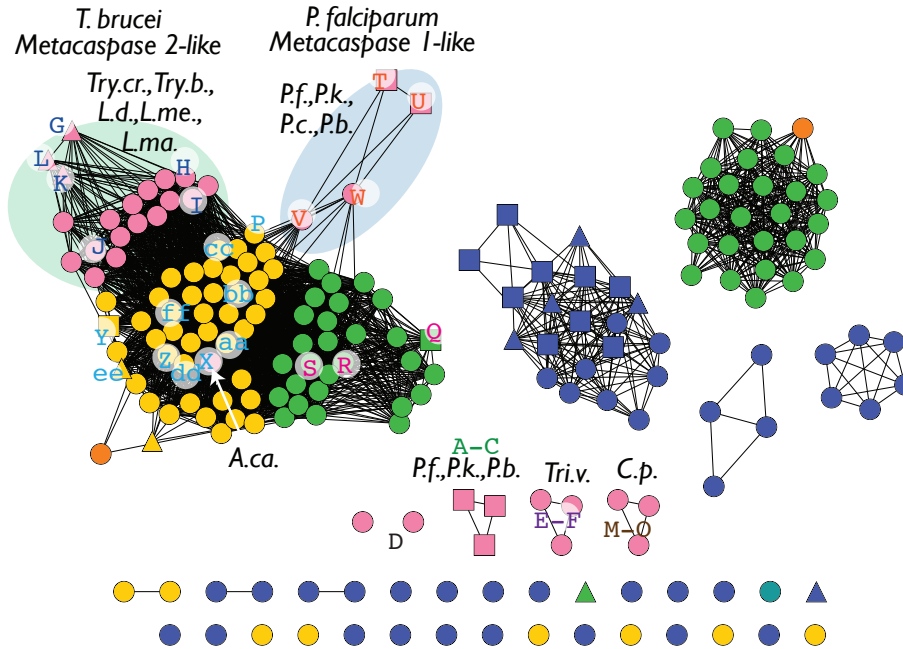


Fig. S2. An alignment of meta-caspases illustrates the ambiguity of predicting the position of the catalytic cysteine.

Sequences in the alignment below are labeled using letters that correspond to the location of each sequence in the SSN from Fig. 3c. A (*) marks sequences in the alignment that have no cysteines in the general area expected to contain the nucleophile.

