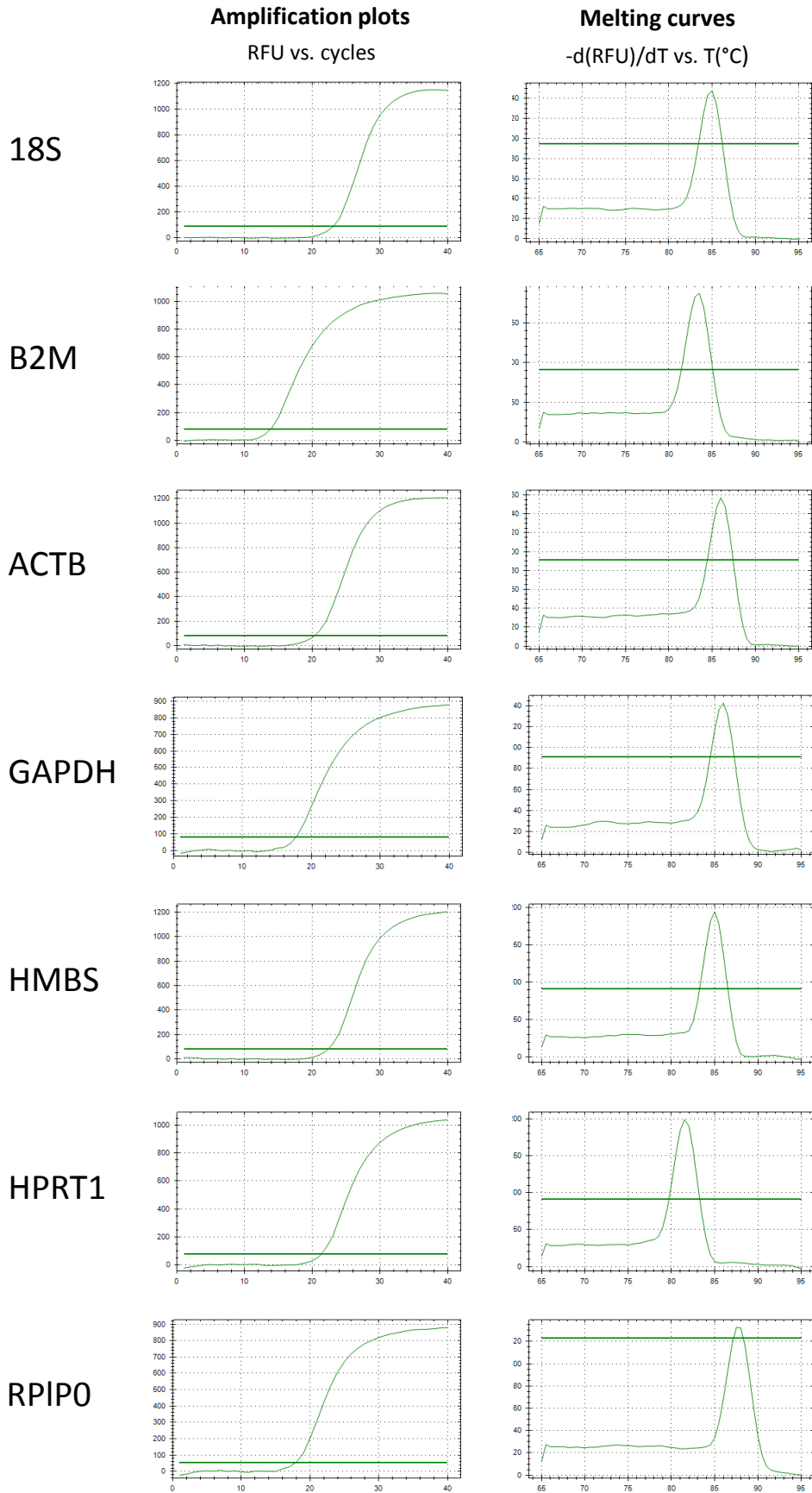


Figure S1

Representative amplification and melt-curve profiles of Real-Time qPCR assays

Candidate reference genes for mRNA normalization



Representative amplification and melt-curve profiles of Real-Time qPCR assays

Candidate reference genes for microRNA normalization

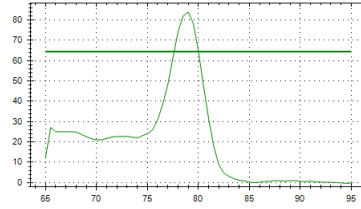
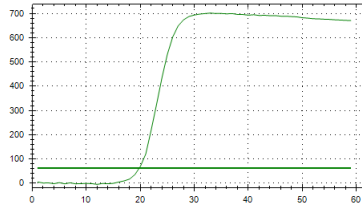
Amplification plots

RFU vs. cycles

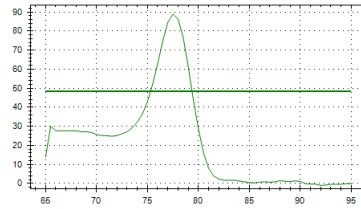
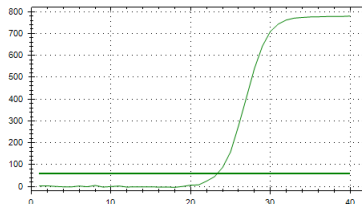
Melting curves

$-d(\text{RFU})/dT$ vs. $T(^{\circ}\text{C})$

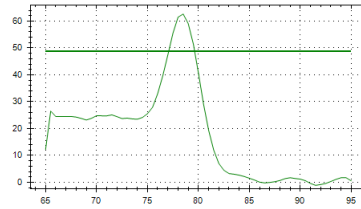
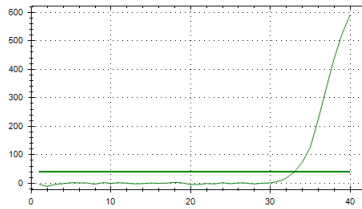
miR-16



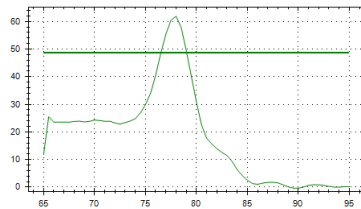
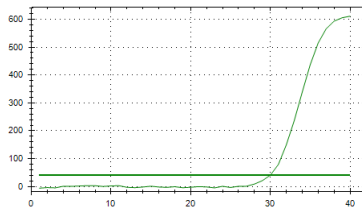
miR-19a



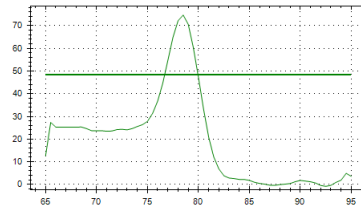
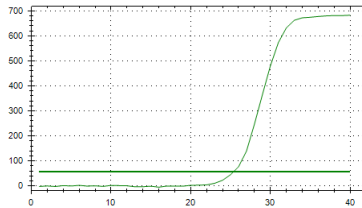
miR-122



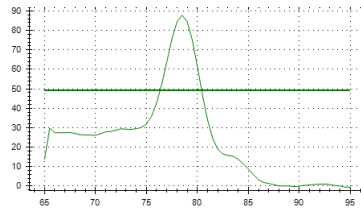
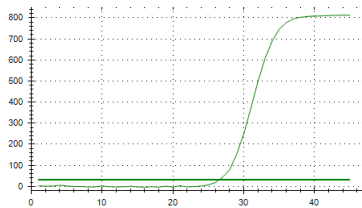
miR-142



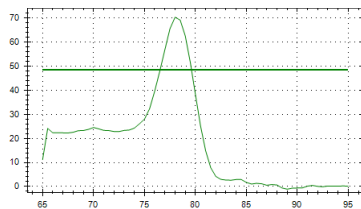
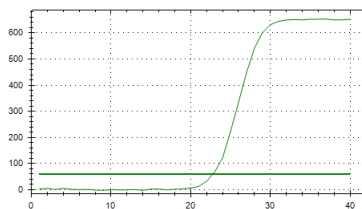
miR-143



miR-186

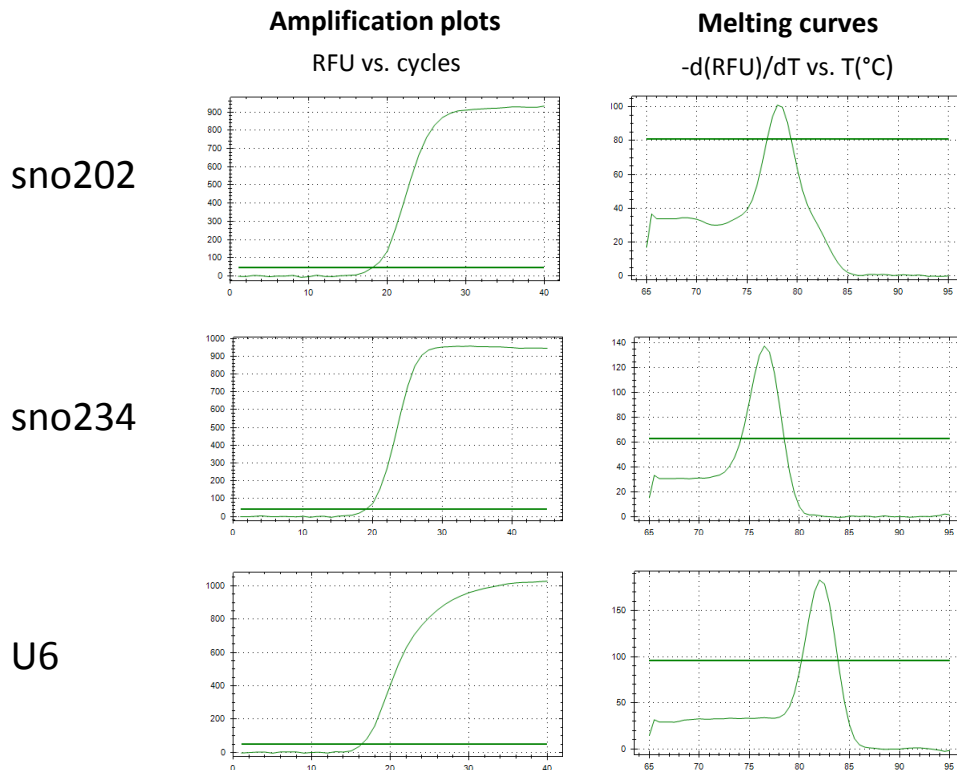


miR-200a



Representative amplification and melt-curve profiles of Real-Time qPCR assays

Candidate reference genes for microRNA normalization



Genes of interest

