

Supporting Information
for
Plakilactones G and H from a marine sponge. Stereochemical
determination of highly flexible systems by quantitative NMR-derived
interproton distances combined with quantum mechanical
calculations of ¹³C chemical shifts

Simone Di Micco¹, Angela Zampella², Maria Valeria D'Auria², Carmen Festa², Simona De
Marino², Raffaele Riccio¹, Craig P. Butts^{3*} and Giuseppe Bifulco^{1*}

¹Dipartimento di Farmacia, Università di Salerno, via Giovanni Paolo II 132, 84084 Fisciano (SA),
Italy, ²Dipartimento di Farmacia, Università di Napoli "Federico II", via D. Montesano 49, 80131
Napoli, Italy and ³Department of Chemistry, University of Bristol, Cantocks Close, BS8 1TS
Bristol, United Kingdom

Email: Craig P. Butts - craig.butts@bristol.ac.uk; Giuseppe Bifulco - bifulco@unisa.it

Analytical data

Contents

- Figure S1.** ¹H NMR spectrum (500 MHz, CD₃OD) of plakilactone G (**1**).
- Figure S2.** COSY spectrum (500 MHz, CD₃OD) of plakilactone G (**1**).
- Figure S3.** HSQC spectrum (500 MHz, CD₃OD) of plakilactone G (**1**).
- Figure S4.** HMBC spectrum (500 MHz, CD₃OD) of plakilactone G (**1**).
- Figure S5.** ¹H NMR spectrum (500 MHz, CD₃OD) of plakilactone H (**2**).
- Figure S6.** COSY spectrum (500 MHz, CD₃OD) of plakilactone H (**2**).
- Figure S7.** HSQC spectrum (500 MHz, CD₃OD) of plakilactone H (**2**).
- Figure S8.** HMBC spectrum (500 MHz, CD₃OD) of plakilactone H (**2**).
- Table S1.** NMR Data of plakilactones G (**1**, 500 MHz, CDCl₃) and H (**2**, 600 MHz, CDCl₃)
- Figure S9.** ¹H NMR spectrum (500 MHz, CDCl₃) of plakilactone G (**1**).
- Figure S10.** COSY spectrum (500 MHz, CDCl₃) of plakilactone G (**1**).
- Figure S11.** HSQC spectrum (500 MHz, CDCl₃) of plakilactone G (**1**).
- Figure S12.** HMBC spectrum (500 MHz, CDCl₃) of plakilactone G (**1**).

Figure S13. ^1H NMR spectrum (600 MHz, CDCl_3) of plakilactone H (**2**).

Figure S14. COSY spectrum (600 MHz, CDCl_3) of plakilactone H (**2**).

Figure S15. HSQC spectrum (600 MHz, CDCl_3) of plakilactone H (**2**).

Figure S16. HMBC spectrum (600 MHz, CDCl_3) of plakilactone H (**2**).

Figure S17. Selective 1D-NOESY spectrum (600 MHz, CDCl_3) of Me16 of plakilactone H (**2**).

Figure S18. Selective 1D-NOESY spectrum (600 MHz, CDCl_3) of Me12 of plakilactone H (**2**).

Figure S19. Selective 1D-NOESY spectrum (600 MHz, CDCl_3) of H15a of plakilactone H (**2**).

Figure S20. Selective 1D-NOESY spectrum (600 MHz, CDCl_3) of H15b of plakilactone H (**2**).

Figure S21. Selective 1D-NOESY spectrum (600 MHz, CDCl_3) of H9 of plakilactone H (**2**).

Figure S22. Selective 1D-NOESY spectrum (600 MHz, CDCl_3) of H13a of plakilactone H (**2**).

Figure S23. Selective 1D-NOESY spectrum (600 MHz, CDCl_3) of H5b of plakilactone H (**2**).

Figure S24. Selective 1D-NOESY spectrum (600 MHz, CDCl_3) of H11 of plakilactone H (**2**).

Figure S25. Selective 1D-NOESY spectrum (600 MHz, CDCl_3) of H7 of plakilactone H (**2**).

Figure S26. Selective 1D-NOESY spectrum (600 MHz, CDCl_3) of H8 of plakilactone H (**2**).

Figure S27. Selective 1D-NOESY spectrum (600 MHz, CDCl_3) of H3 of plakilactone H (**2**).

Table S2. Experimental and calculated ^{13}C chemical shifts values for **2a,b,e,f**.

Table S3. Experimental and calculated ^{13}C chemical shifts values for **1a-d**.

Figure S28. Selective 1D-NOESY spectrum (500 MHz, CDCl_3) of Me14 of plakilactone G (**1**).

Figure S29. Selective 1D-NOESY spectrum (500 MHz, CDCl_3) of Me16 of plakilactone G (**1**).

Figure S30. Selective 1D-NOESY spectrum (500 MHz, CDCl_3) of H9b of plakilactone G (**1**).

Figure S31. Selective 1D-NOESY spectrum (500 MHz, CDCl_3) of H13b of plakilactone G (**1**).

Figure S32. Selective 1D-NOESY spectrum (500 MHz, CDCl_3) of H5b of plakilactone G (**1**).

Figure S33. Selective 1D-NOESY spectrum (500 MHz, CDCl_3) of H11 of plakilactone G (**1**).

Figure S34. Selective 1D-NOESY spectrum (500 MHz, CDCl_3) of H3 of plakilactone G (**1**).

Table S4. Comparison of calculated and experimental inter-proton distances for plakilactone G (**1**).

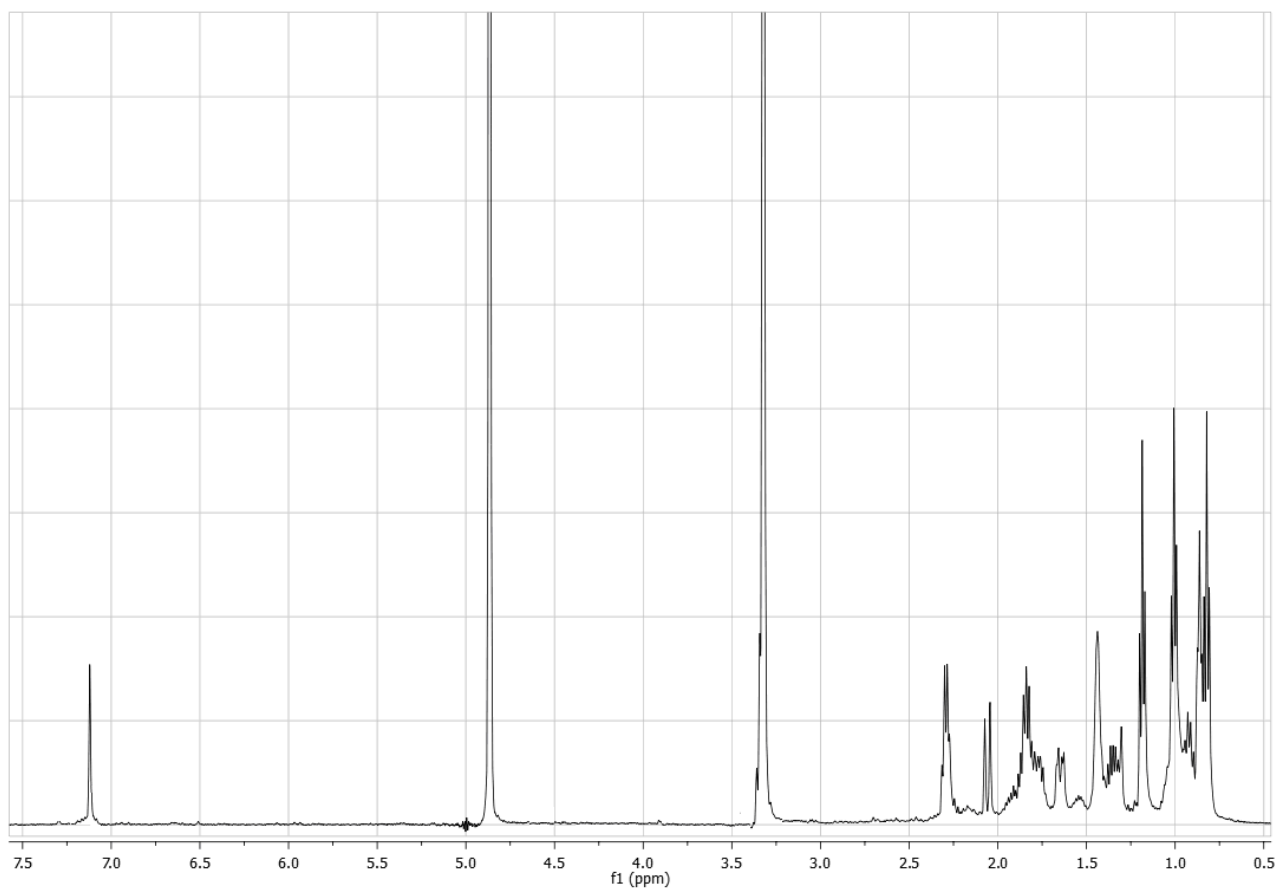


Figure S1: ^1H NMR spectrum (500 MHz, CD_3OD) of plakilactone G (**1**).

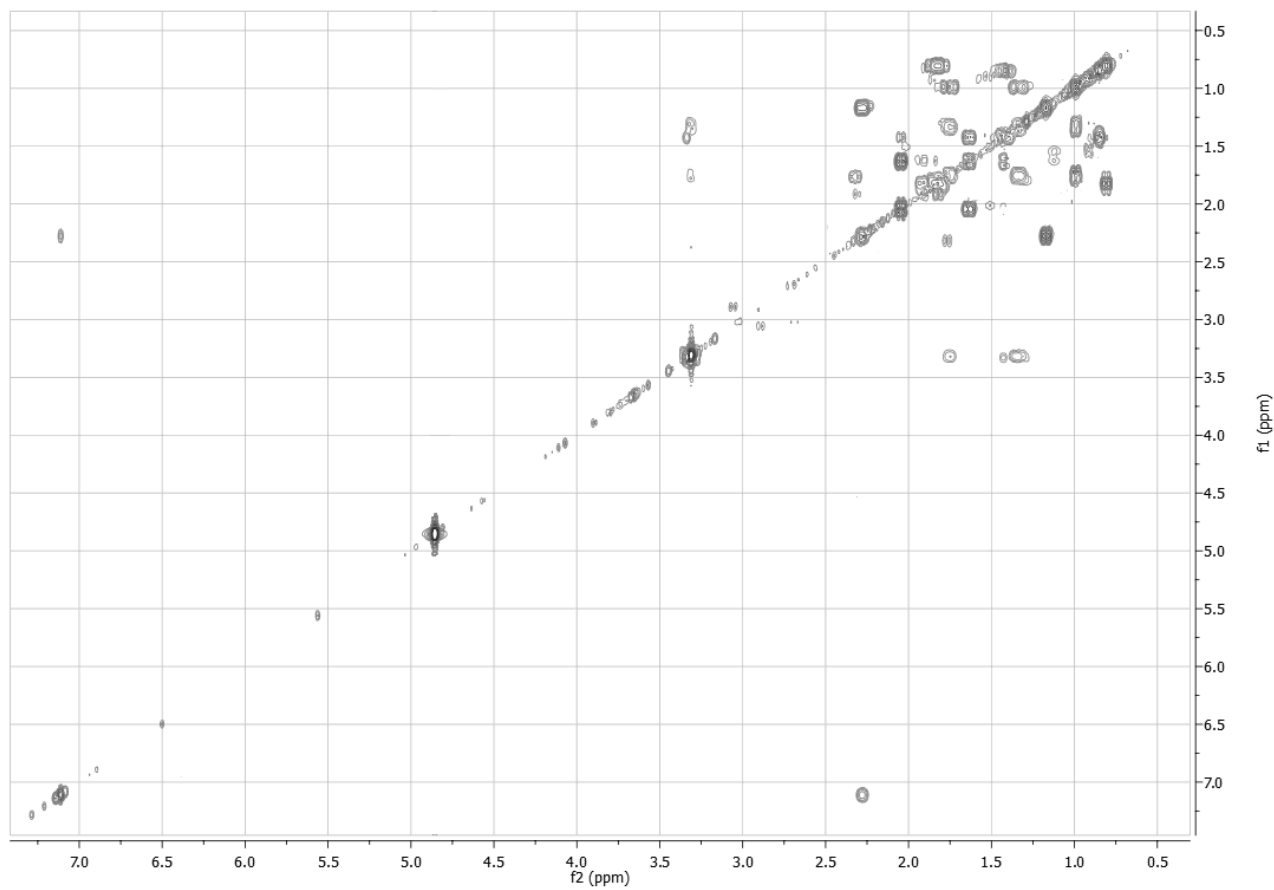


Figure S2: COSY spectrum (500 MHz, CD₃OD) of plakilactone G (**1**).

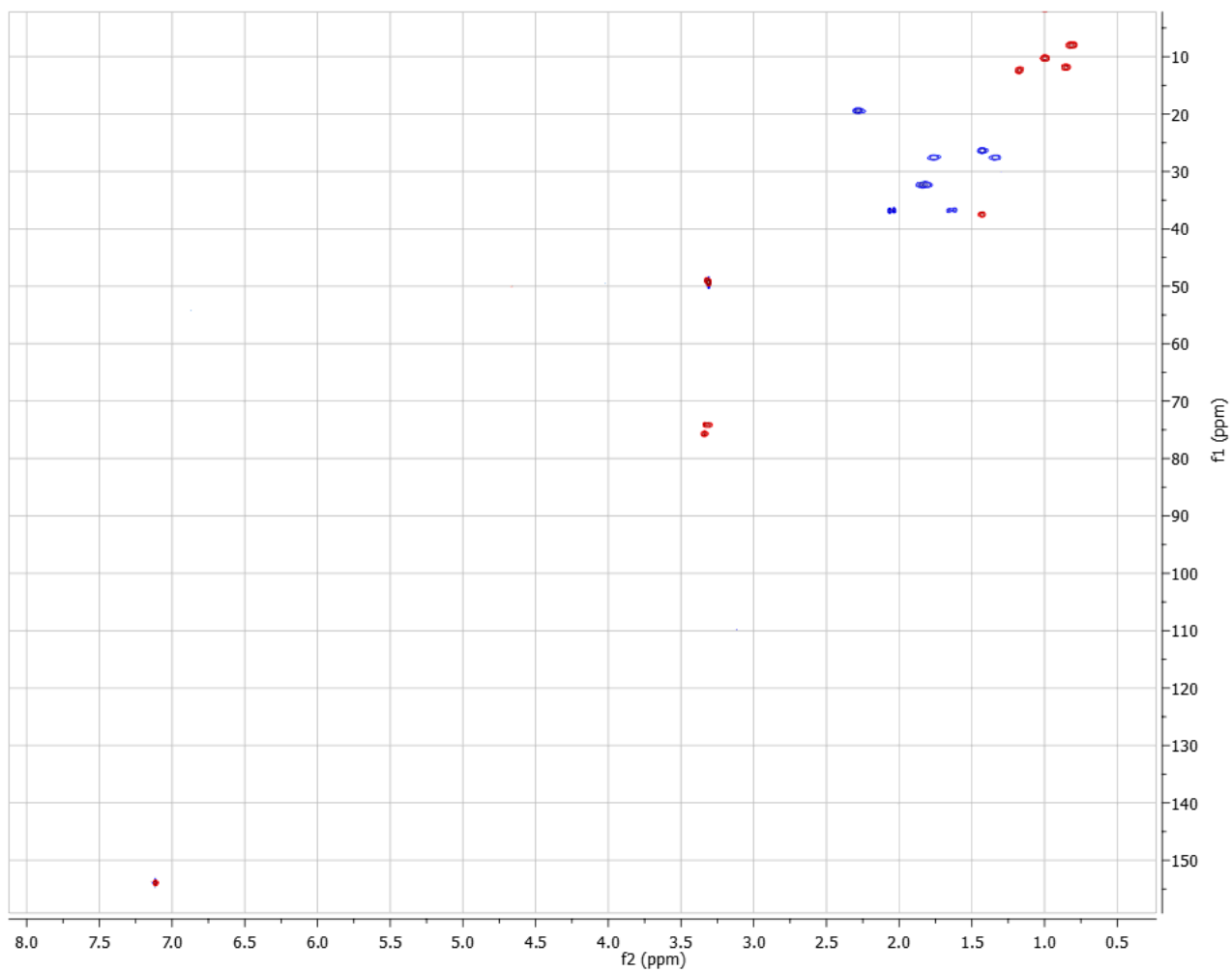


Figure S3: HSQC spectrum (500 MHz, CD₃OD) of plakilactone G (**1**).

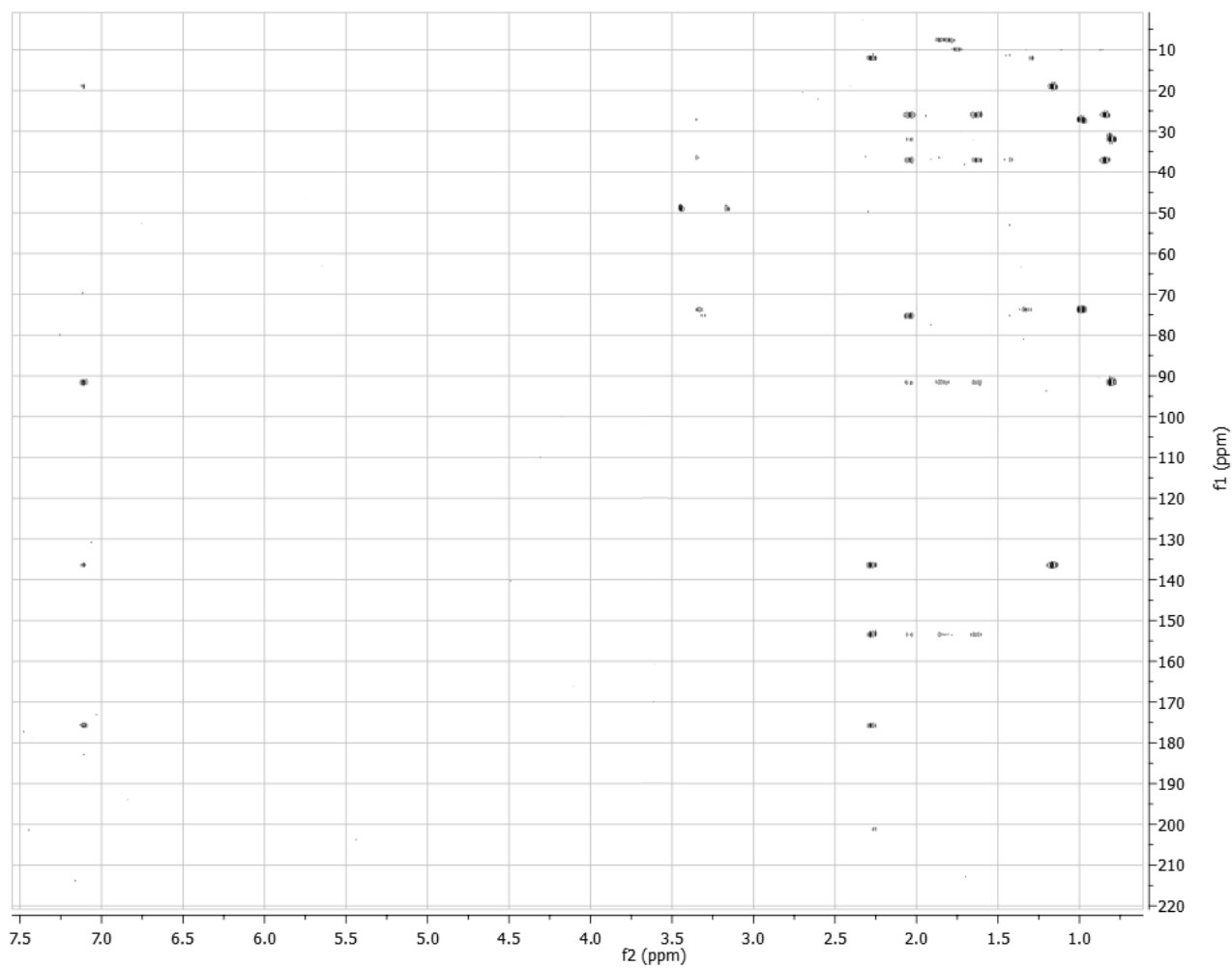


Figure S4: HMBC spectrum (500 MHz, CD₃OD) of plakilactone G (**1**).

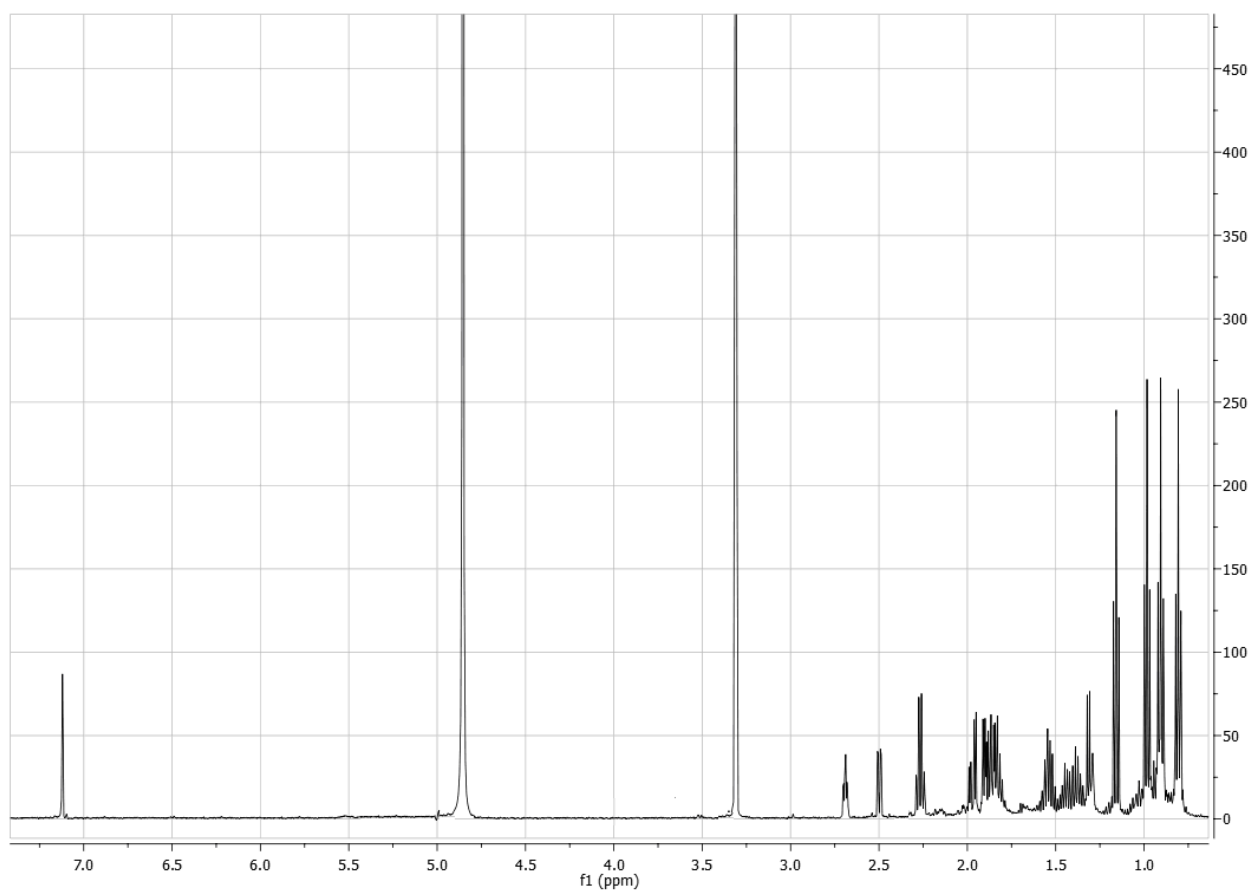


Figure S5: ^1H NMR spectrum (500 MHz, CD_3OD) of plakilactone H (**2**).

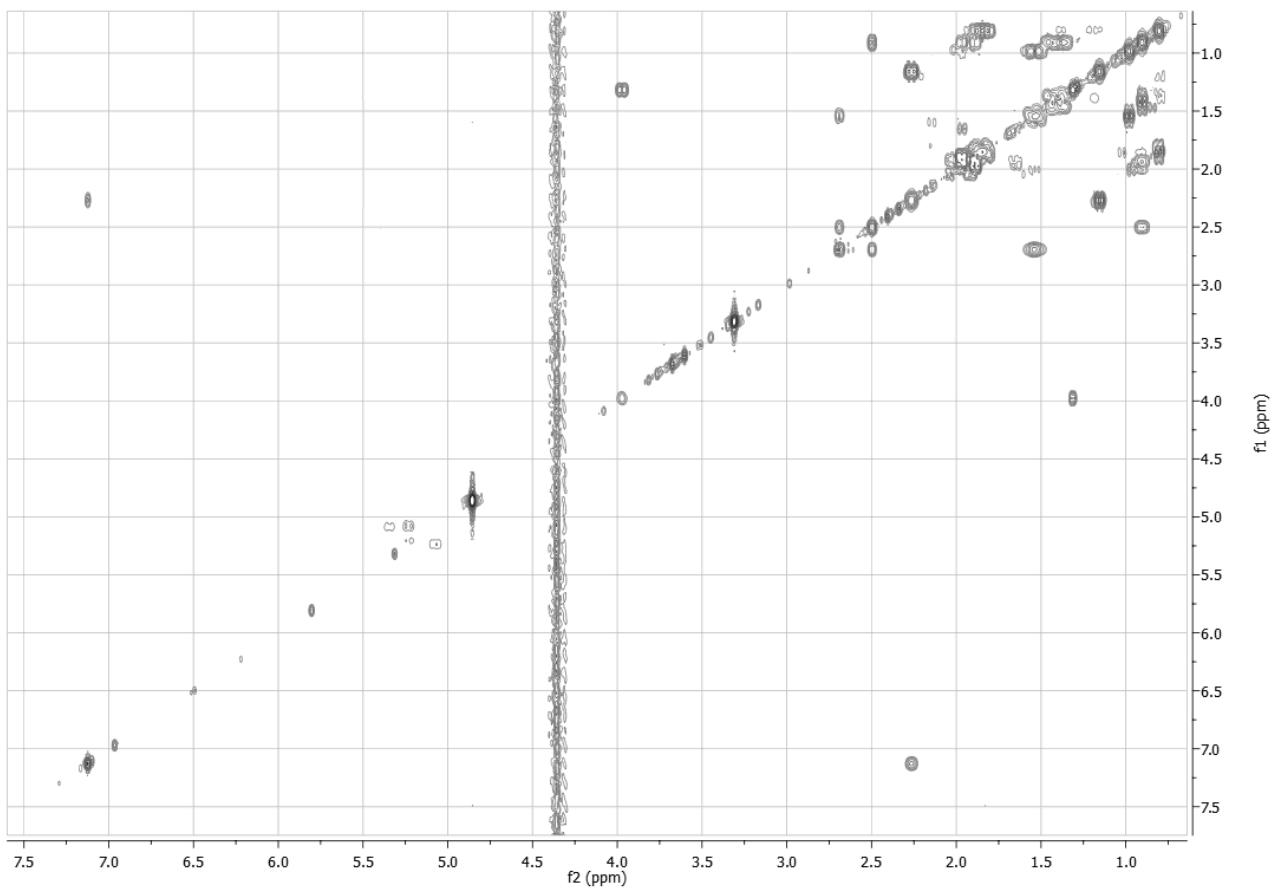


Figure S6: COSY spectrum (500 MHz, CD₃OD) of plakilactone H (**2**).

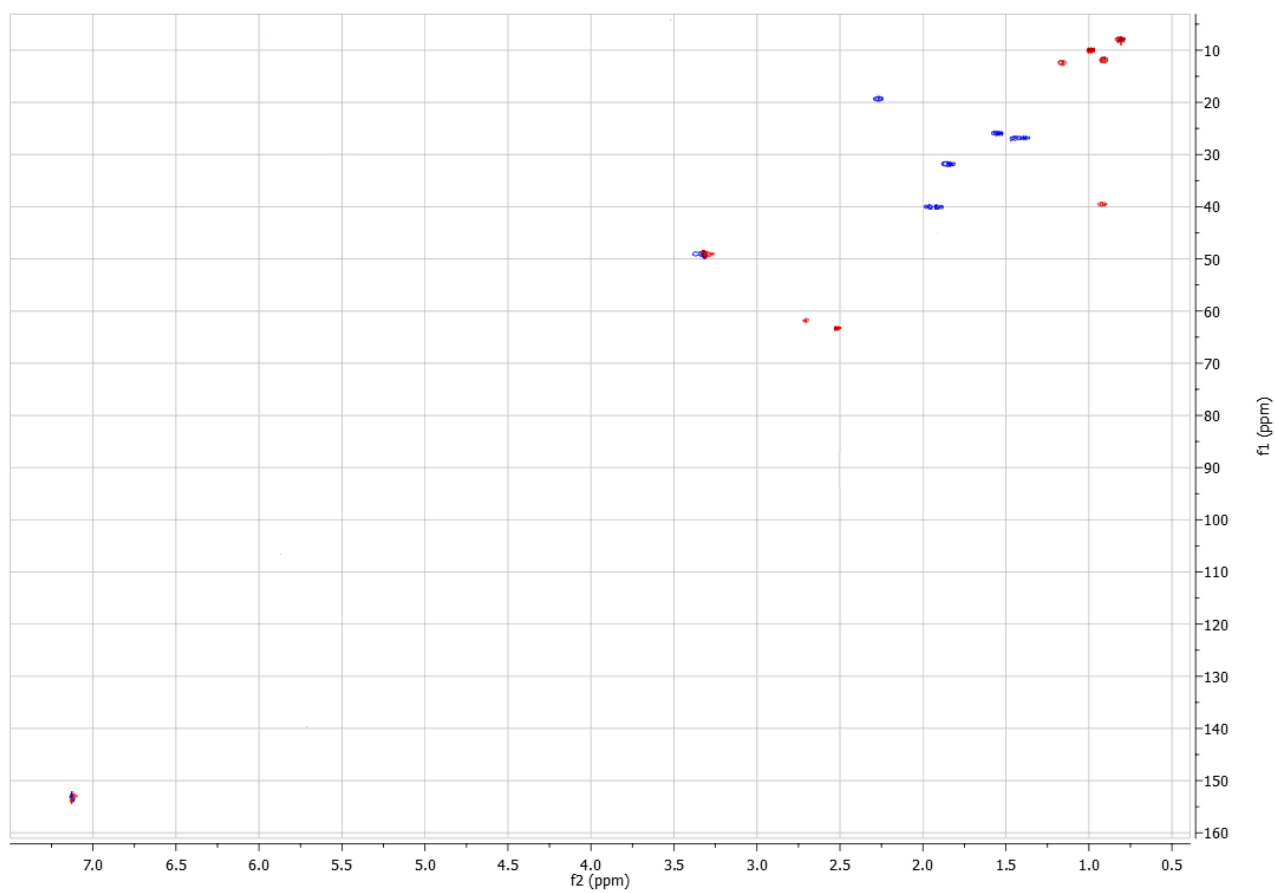


Figure S7: HSQC spectrum (500 MHz, CD_3OD) of plakilactone H (**2**).

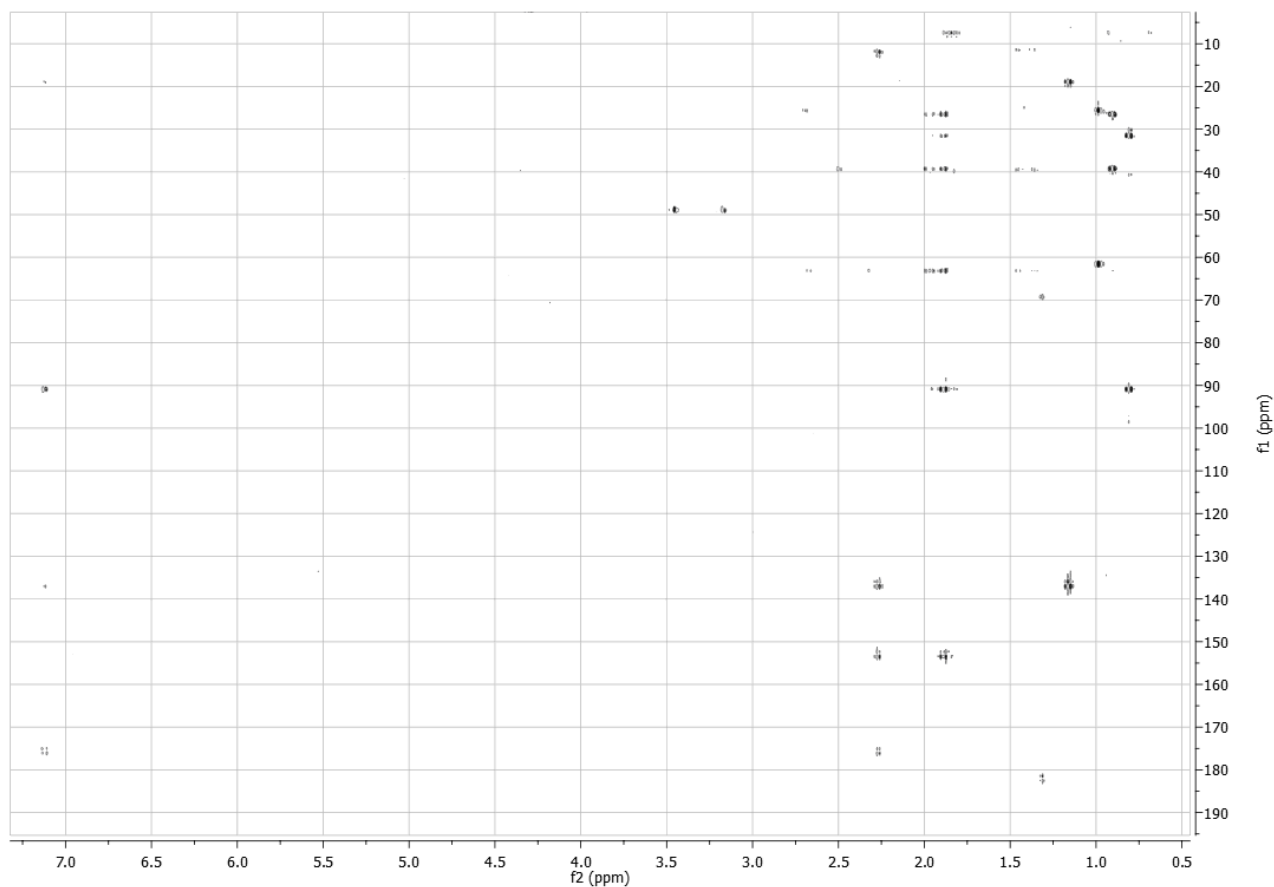


Figure S8: HMBC spectrum (500 MHz, CD₃OD) of plakilactone H (**2**).

Table S1: NMR Data of plakilactones G (**1**, 500 MHz, CDCl₃) and H (**2**, 600 MHz, CDCl₃).

position	1		2	
	δ_{H}	δ_{C}	δ_{H}	δ_{C}
1	-	173.1	-	173.6
2	-	135.5	-	136.1
3	6.87	151.0	6.86	150.2
4	-		-	89.1
5	1.71 2.05	36.2	1.87 1.97	39.1
6	1.37	35.6	0.84	38.2
7	3.46	75.5	2.43	62.1
8	3.49	73.6	2.62	60.9
9	1.38 1.52	24.0	1.54	24.9
10	0.99	10.1	0.98	9.7
11	2.32	18.5	1.14	18.3
12	1.15	12.1	2.29	11.8
13	1.72 1.86	30.9	1.76 1.86	31.2
14	0.81	7.9	0.83	7.73
15	1.35	25.3	1.34 1.46	25.8
16	0.89	10.8	0.88	11.4

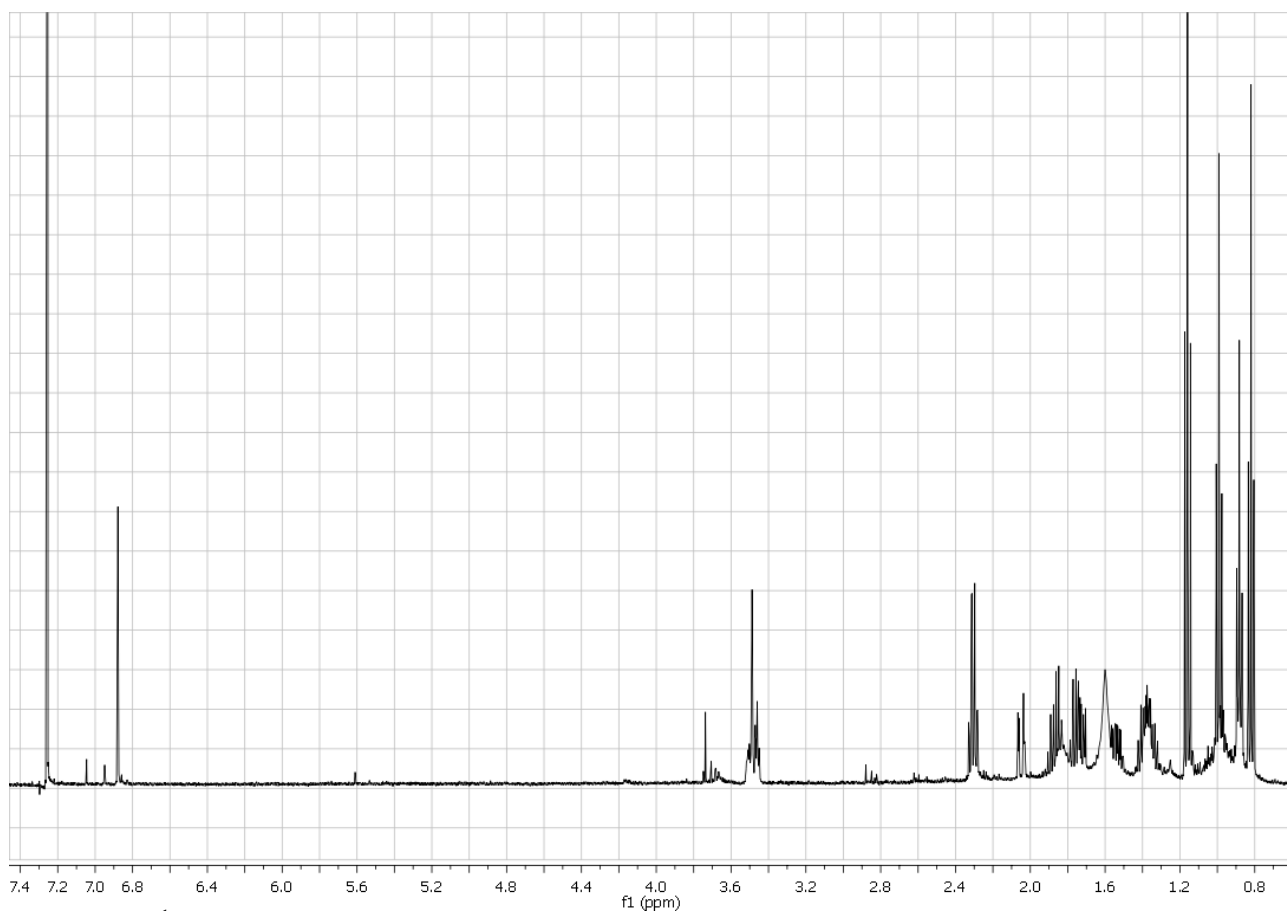


Figure S9: ^1H NMR spectrum (500 MHz, CDCl_3) of plakilactone G (**1**).

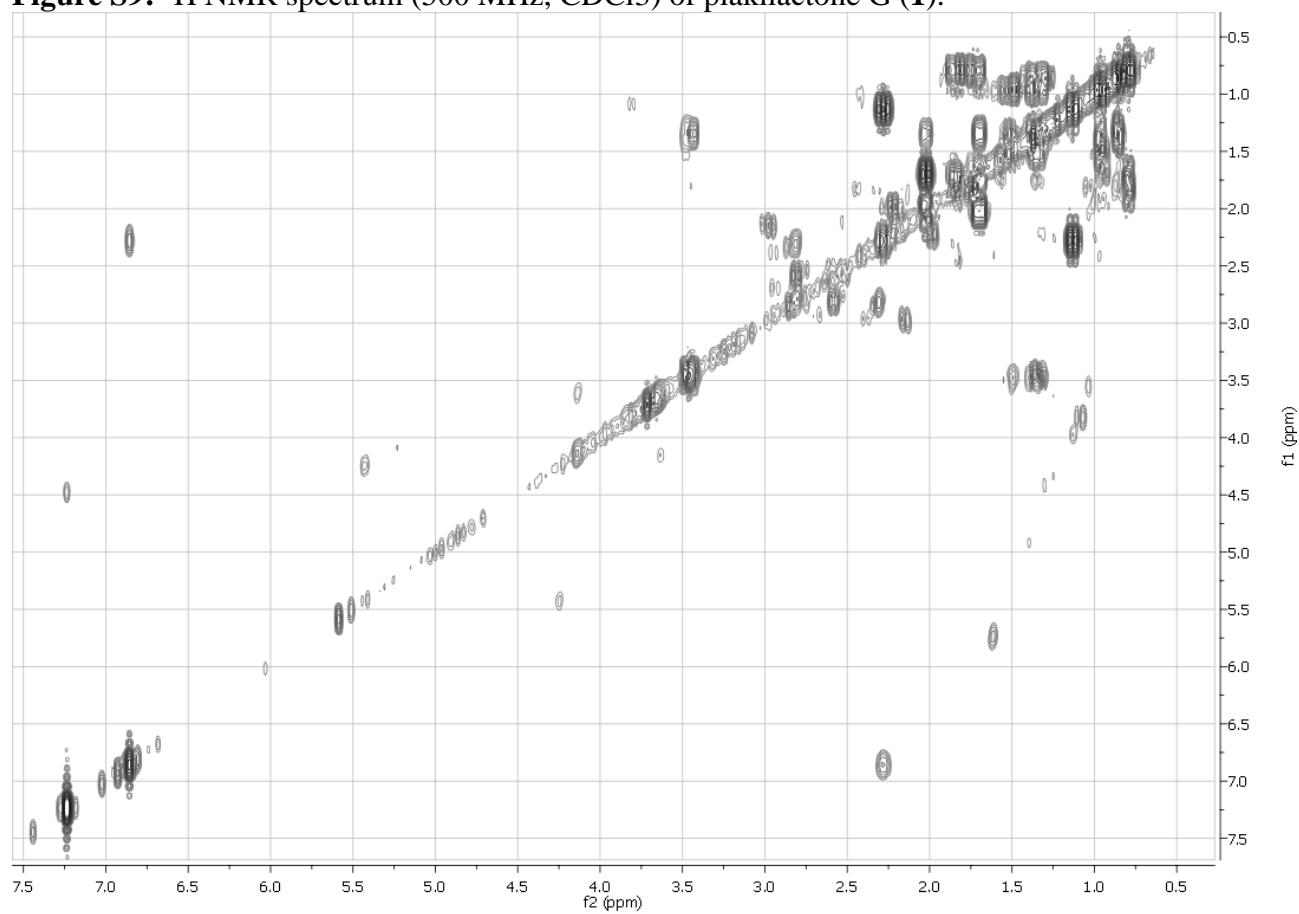


Figure S10: COSY spectrum (500 MHz, CDCl_3) of plakilactone G (**1**).

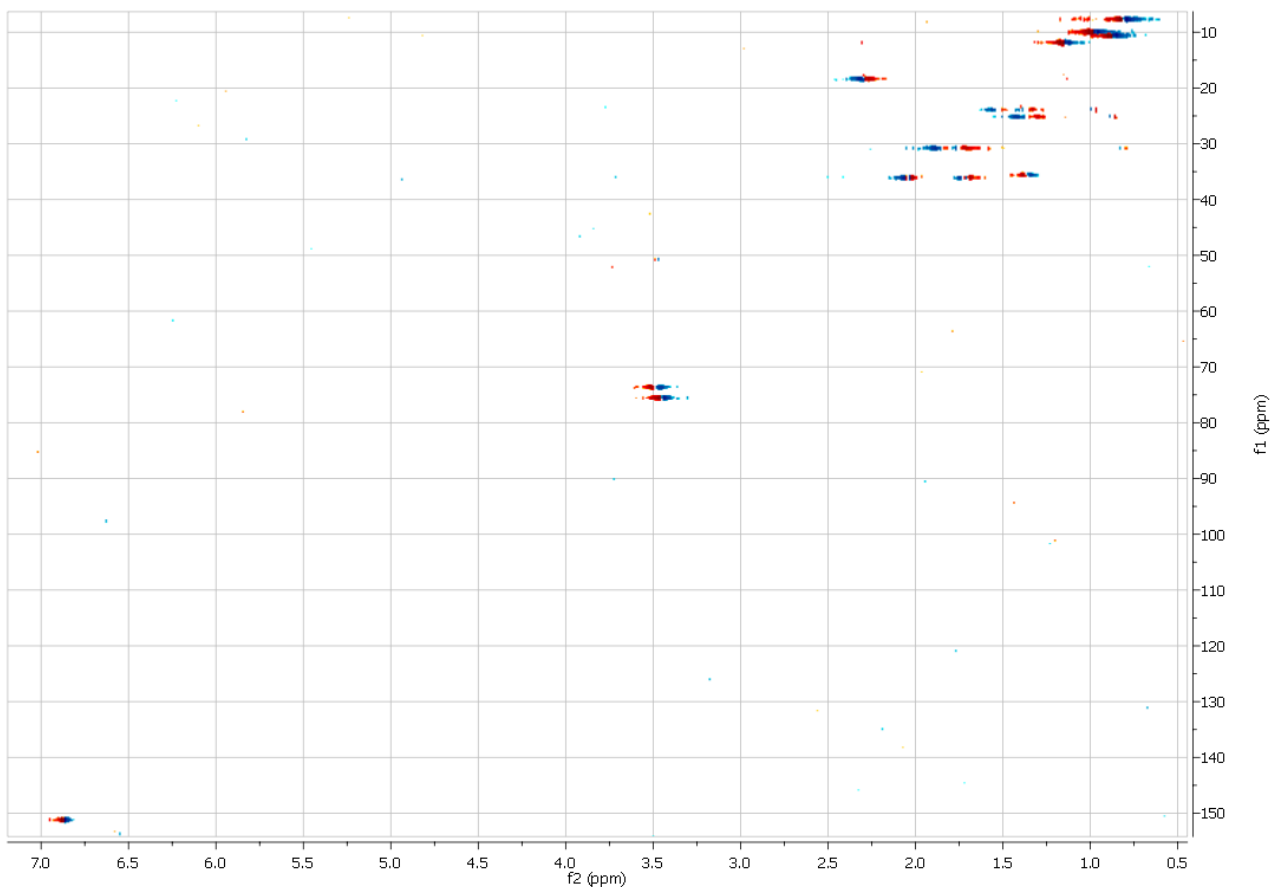


Figure S11: HSQC spectrum (500 MHz, CDCl₃) of plakilactone G (**1**).

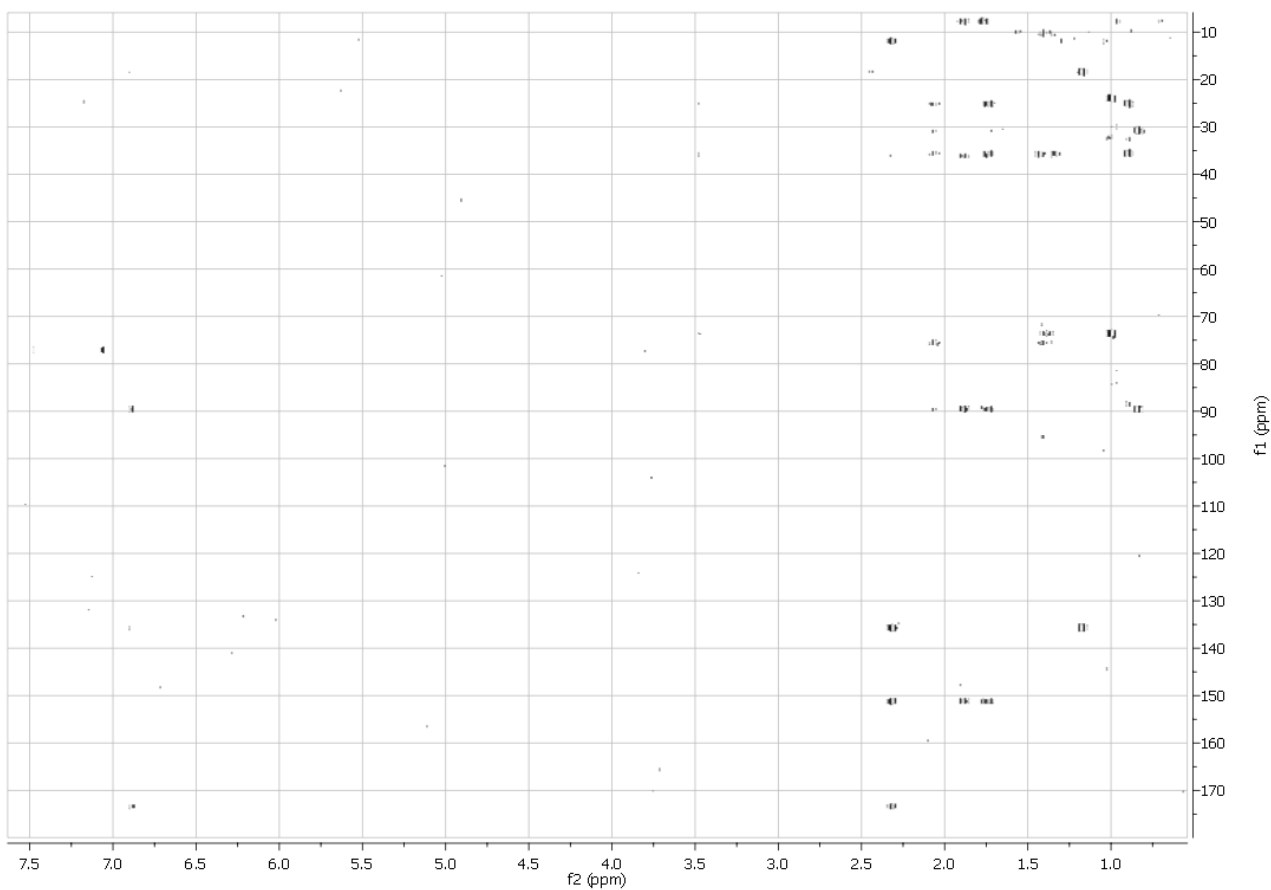


Figure S12: HMBC spectrum (500 MHz, CDCl₃) of plakilactone G (**1**).

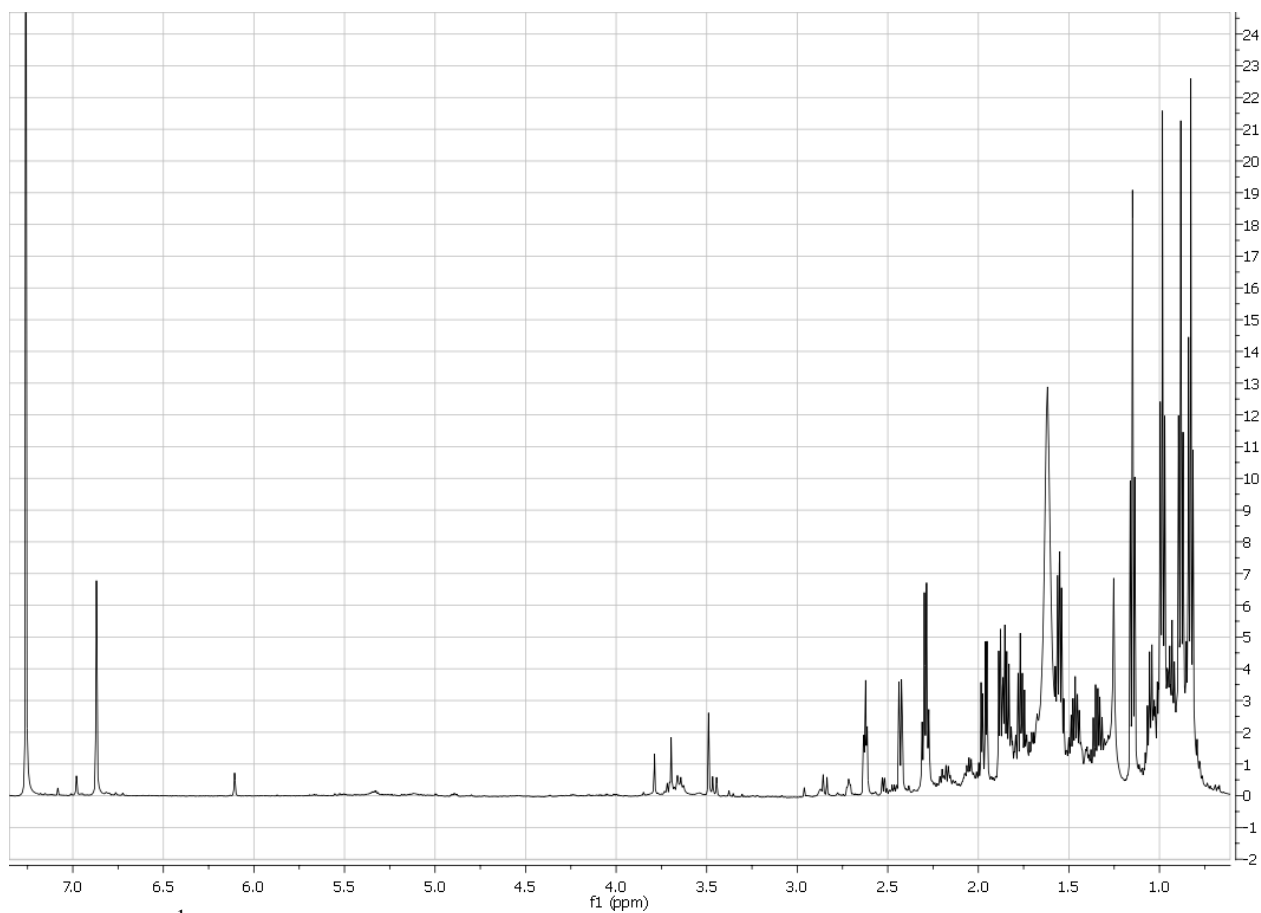


Figure S13: ^1H NMR spectrum (600 MHz, CDCl_3) of plakilactone H (**2**).

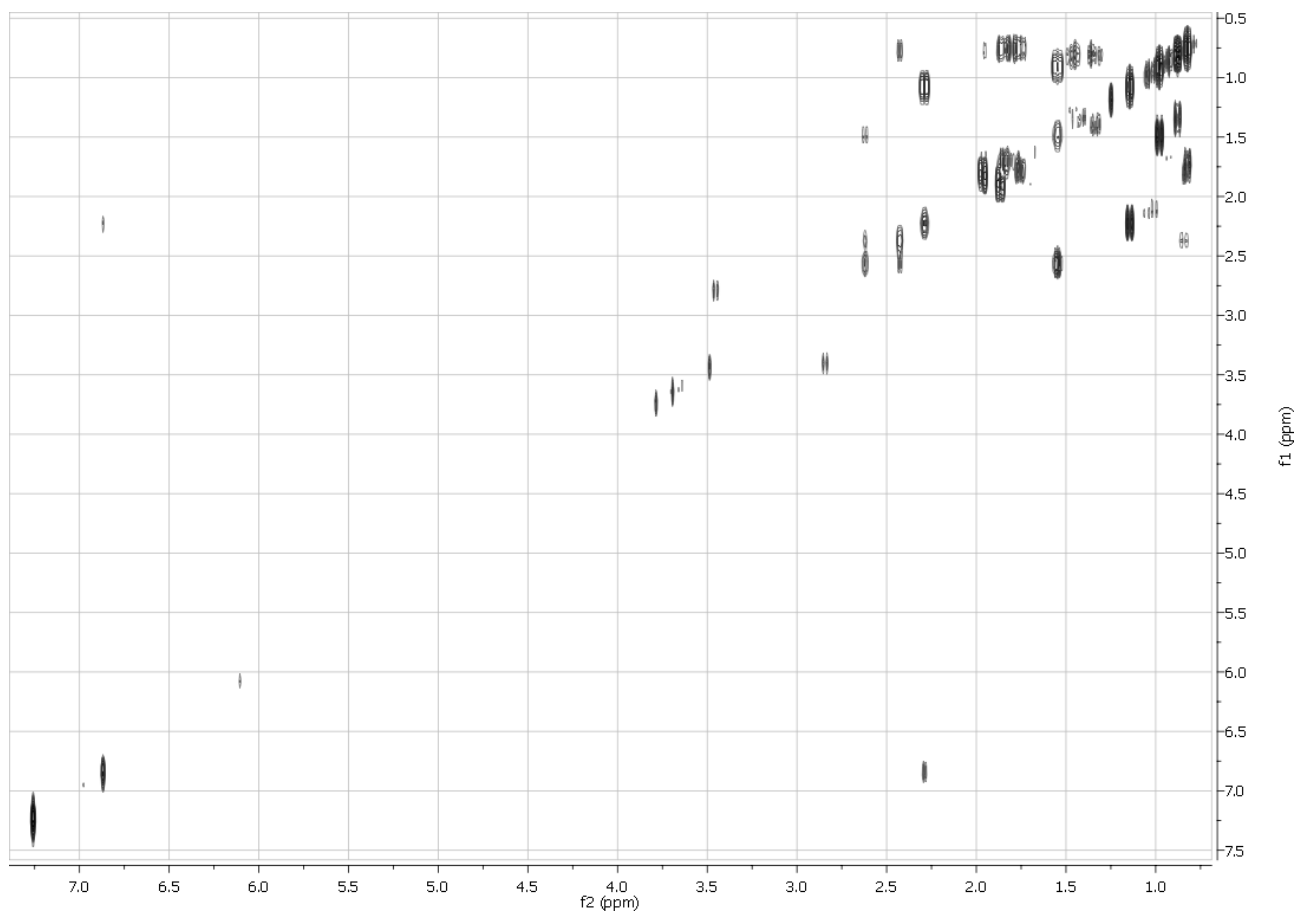


Figure S14: COSY spectrum (600 MHz, CDCl_3) of plakilactone H (**2**).

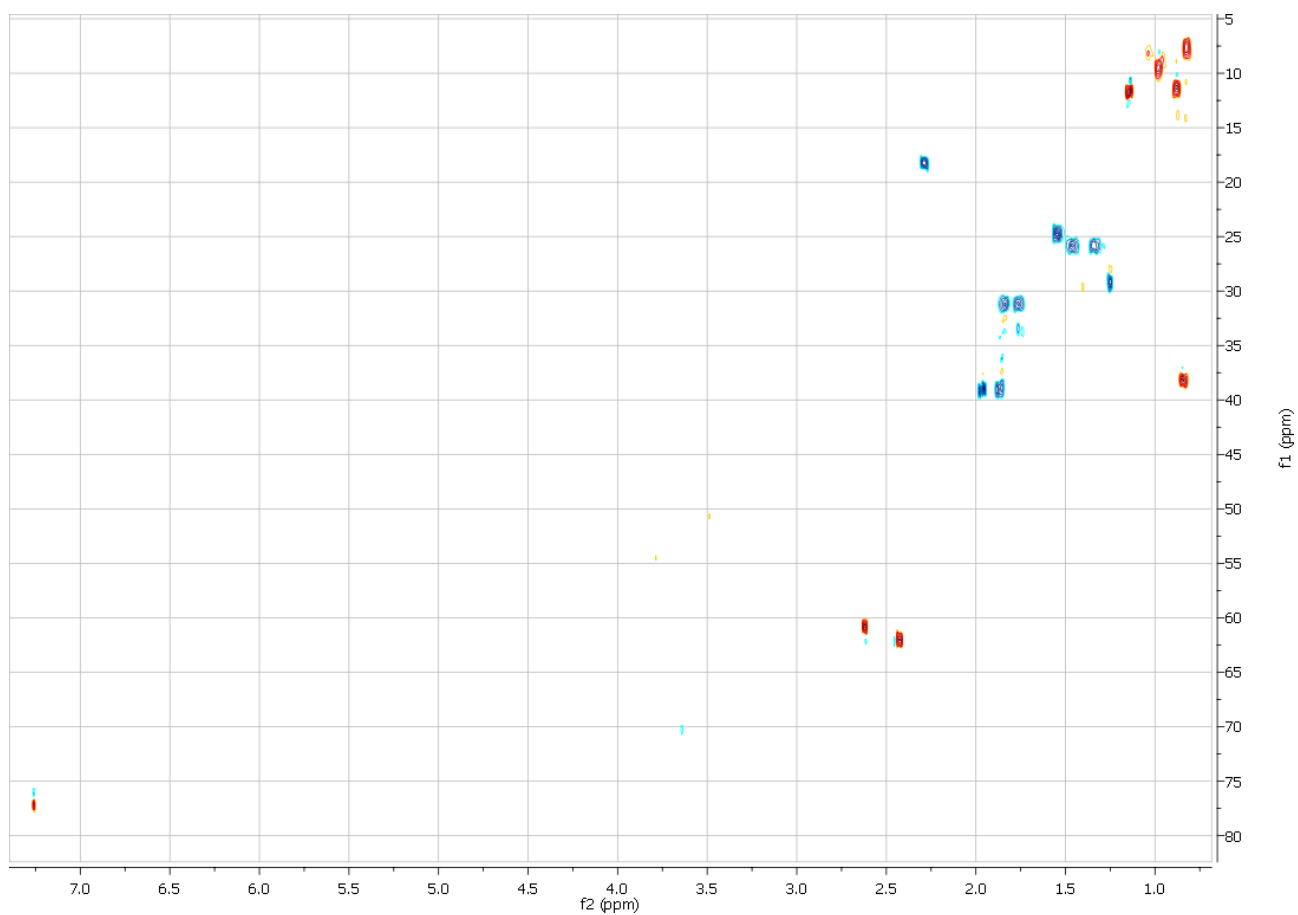


Figure S15: HSQC spectrum (600 MHz, CDCl₃) of plakilactone H (2).

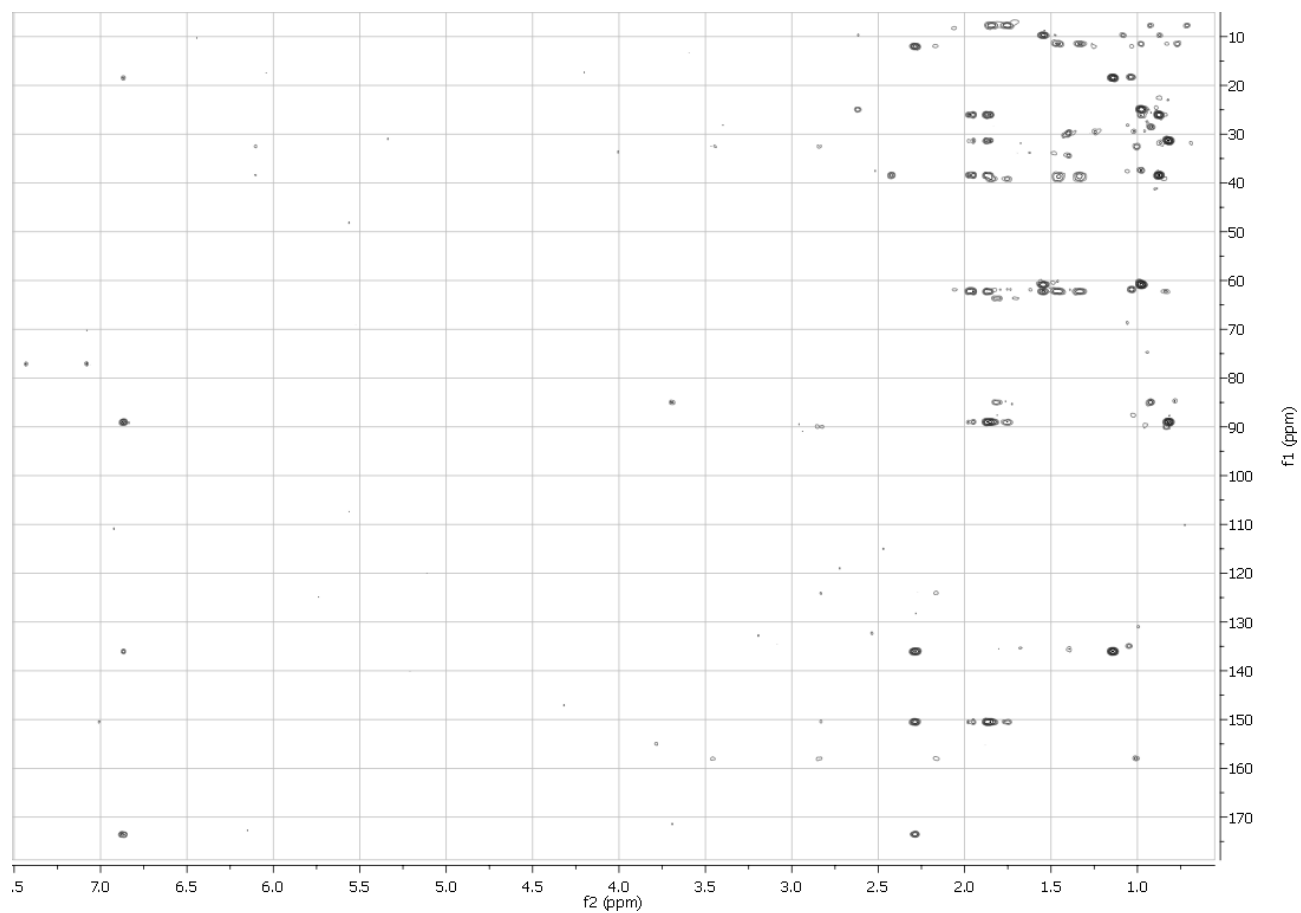


Figure S16: HMBC spectrum (600 MHz, CDCl₃) of plakilactone H (2).

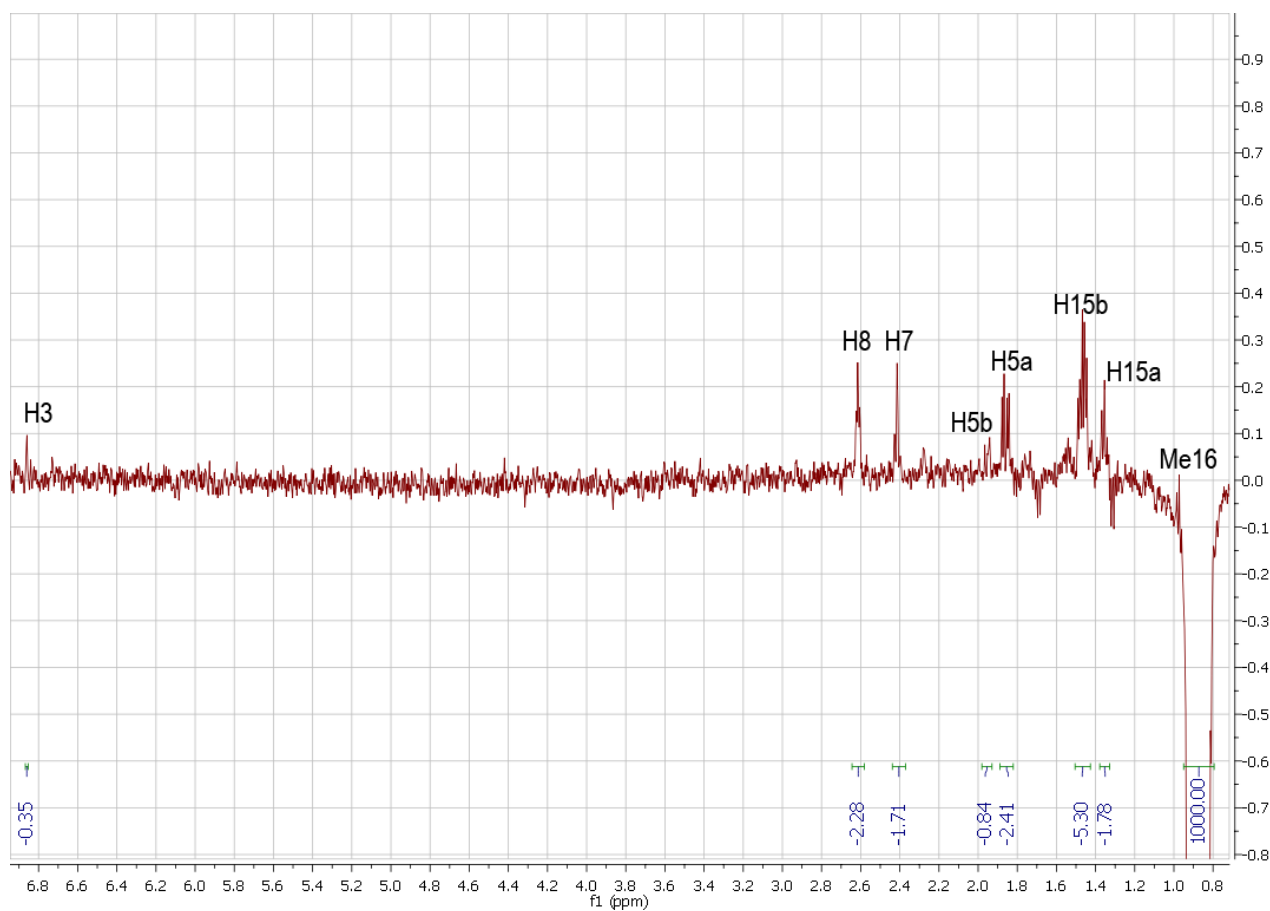


Figure S17: Selective 1D-NOESY spectrum (600 MHz, CDCl_3) of Me16 of plakilactone H (**2**).

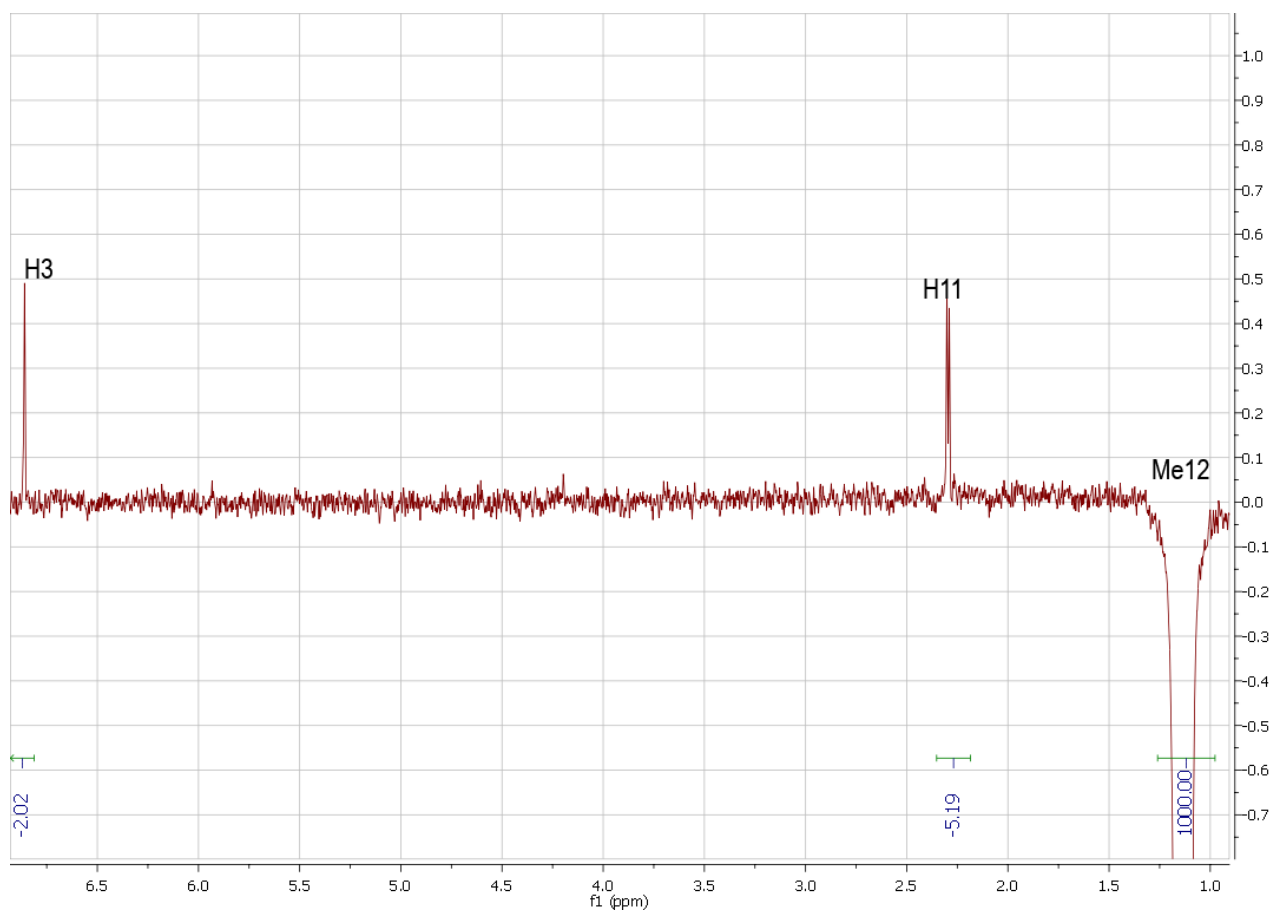


Figure S18: Selective 1D-NOESY spectrum (600 MHz, CDCl_3) of Me12 of plakilactone H (**2**).

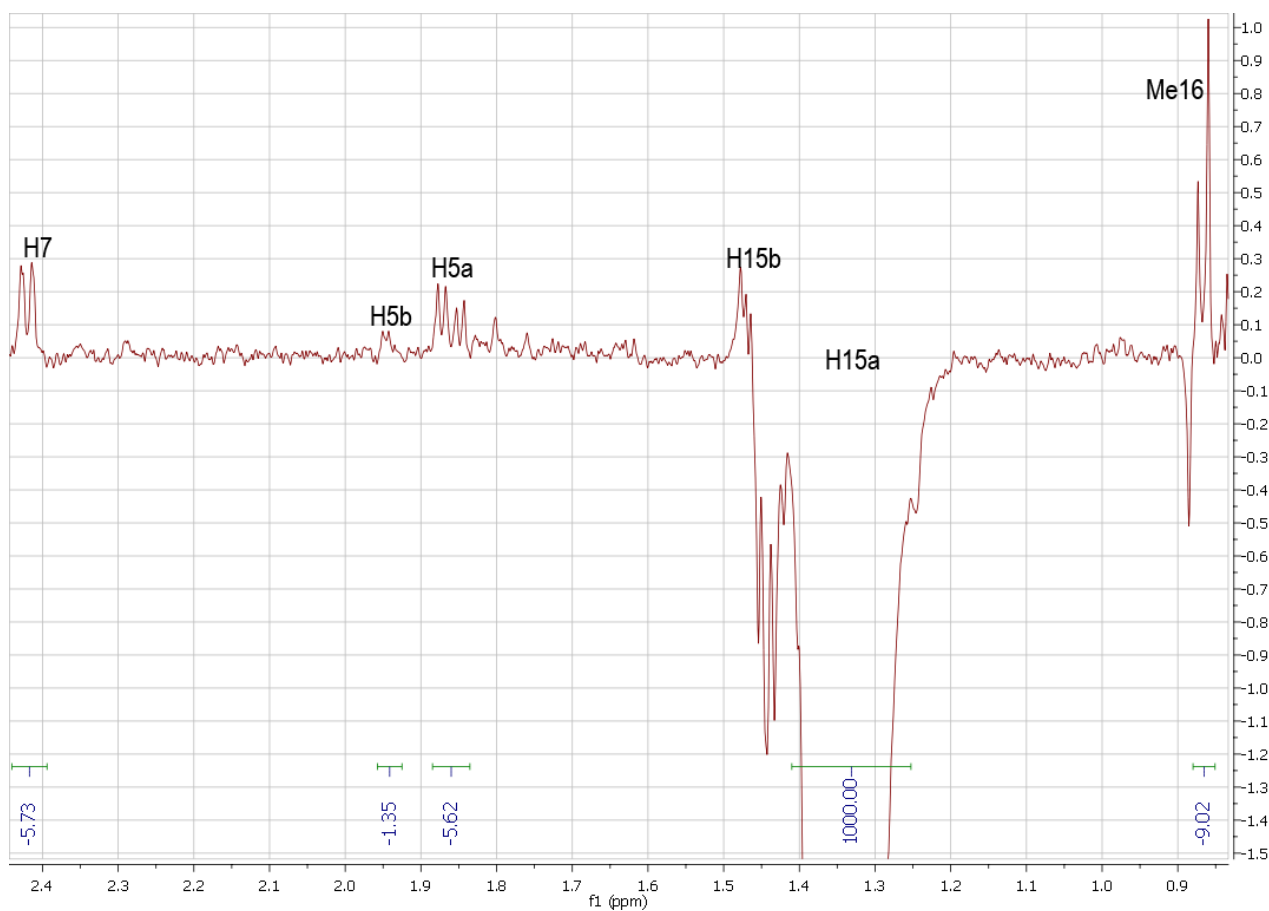


Figure S19: Selective 1D-NOESY spectrum (600 MHz, CDCl_3) of H15a of plakilactone H (2).

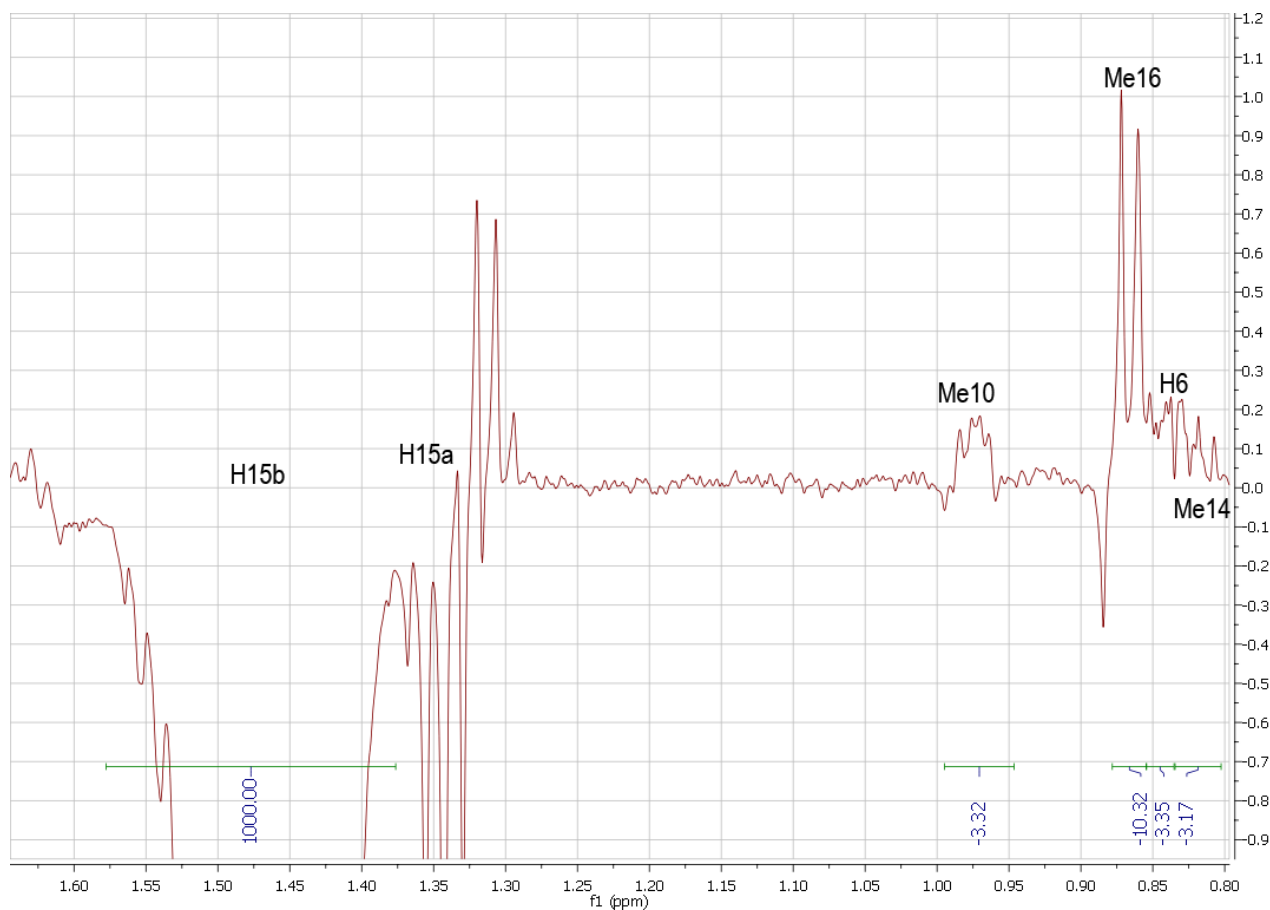


Figure S20: Selective 1D-NOESY spectrum (600 MHz, CDCl_3) of H15b of plakilactone H (2).

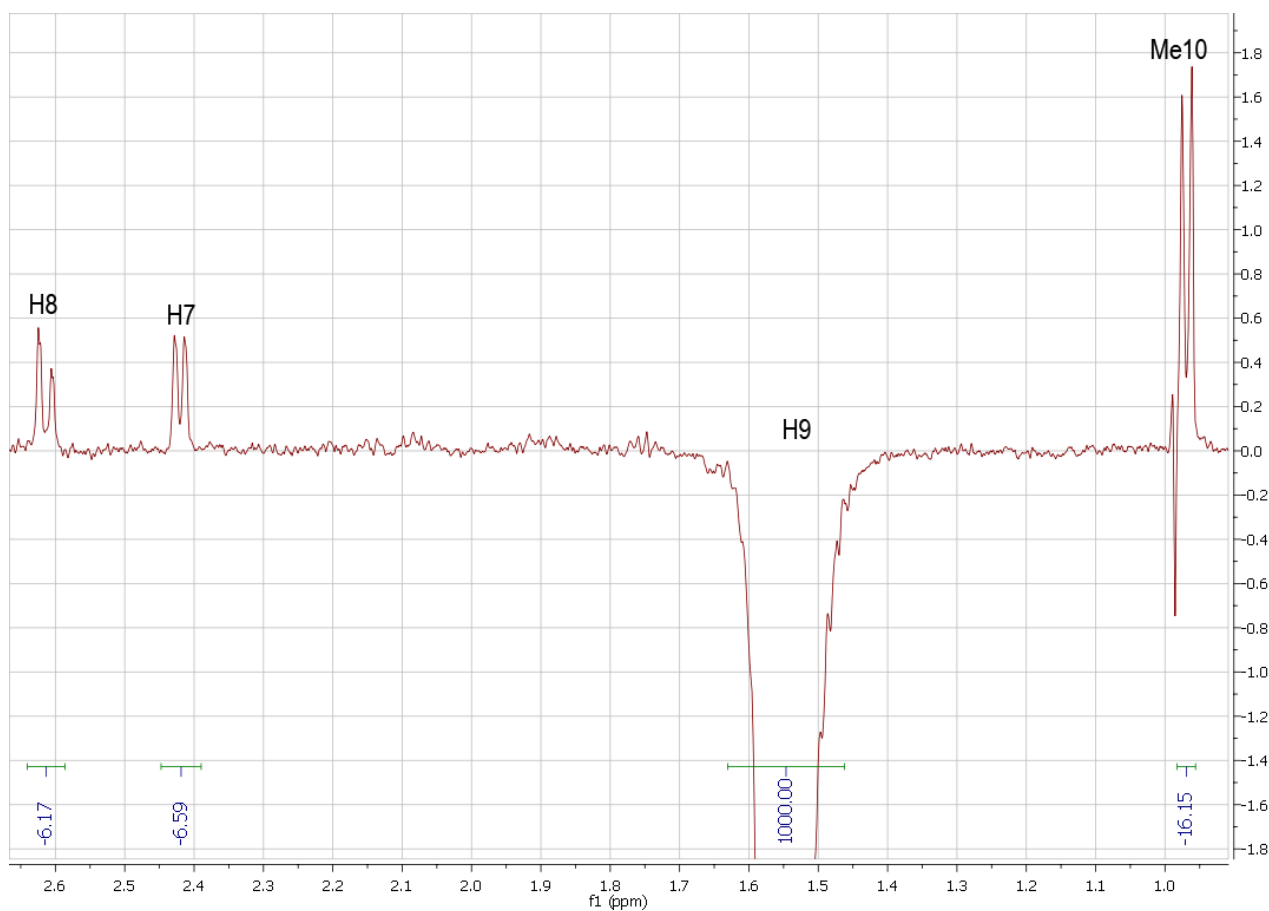


Figure S21: Selective 1D-NOESY spectrum (600 MHz, CDCl_3) of H9 of plakilactone H (2).

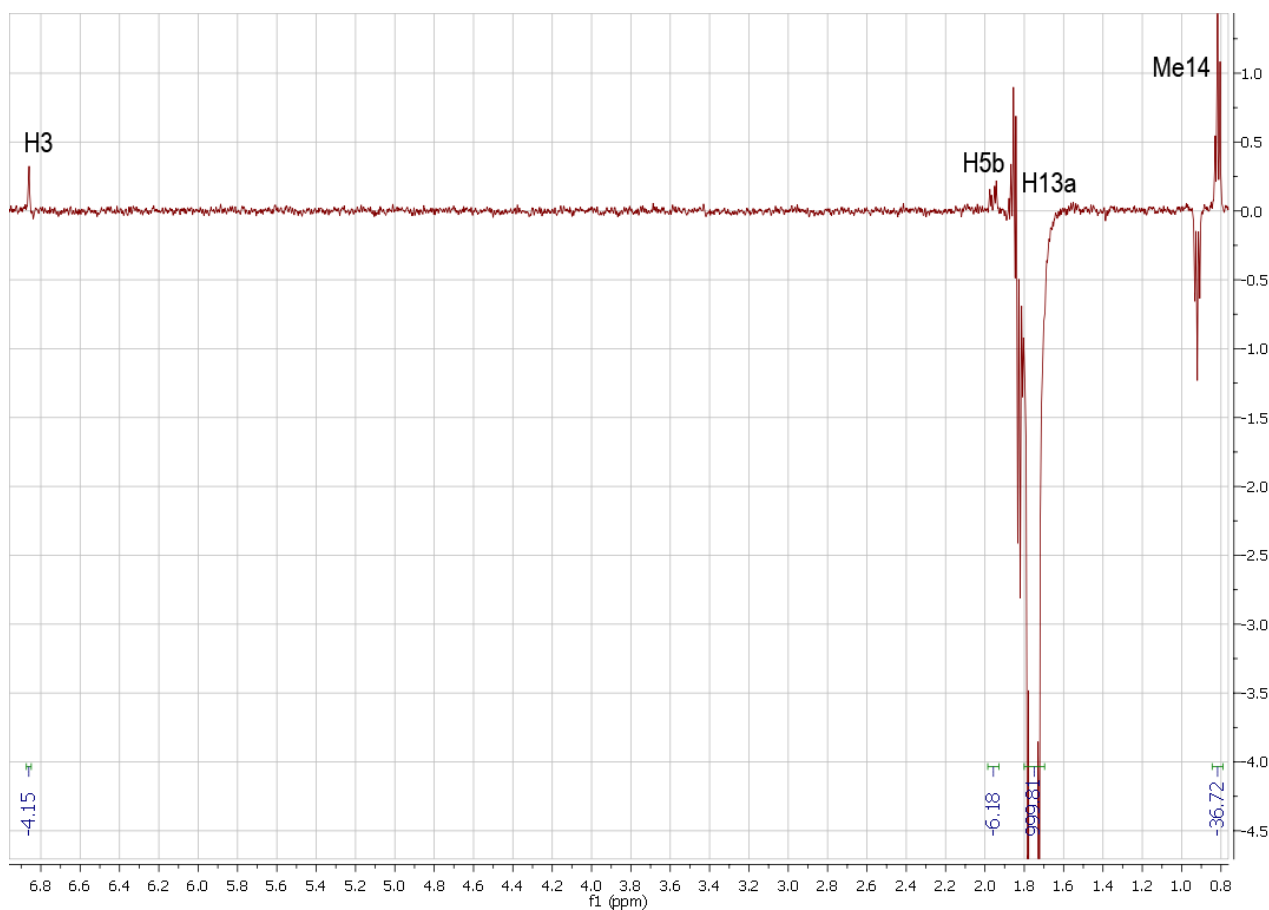


Figure S22: Selective 1D-NOESY spectrum (600 MHz, CDCl_3) of H13a of plakilactone H (2).

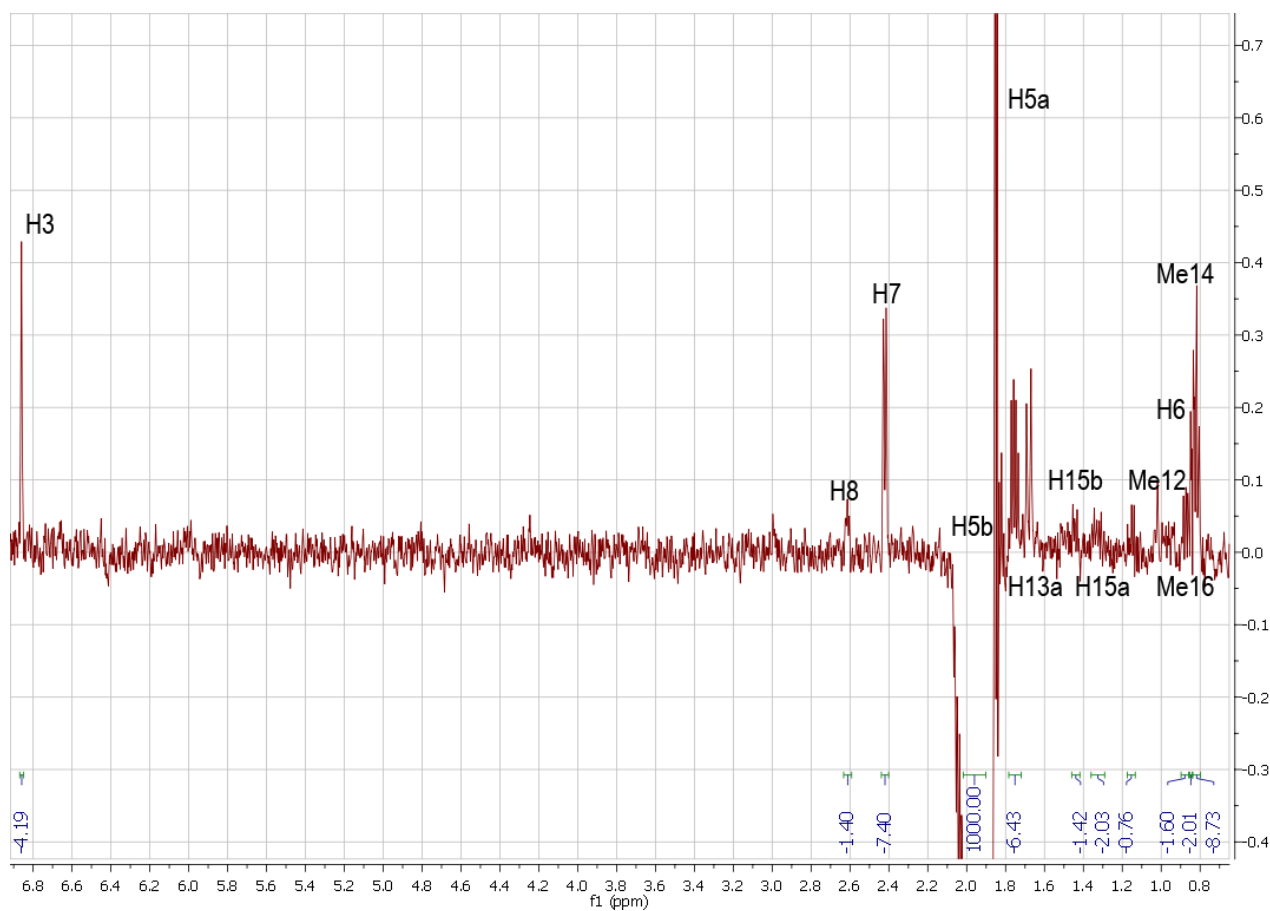


Figure S23: Selective 1D-NOESY spectrum (600 MHz, CDCl_3) of H5b of plakilactone H (**2**).

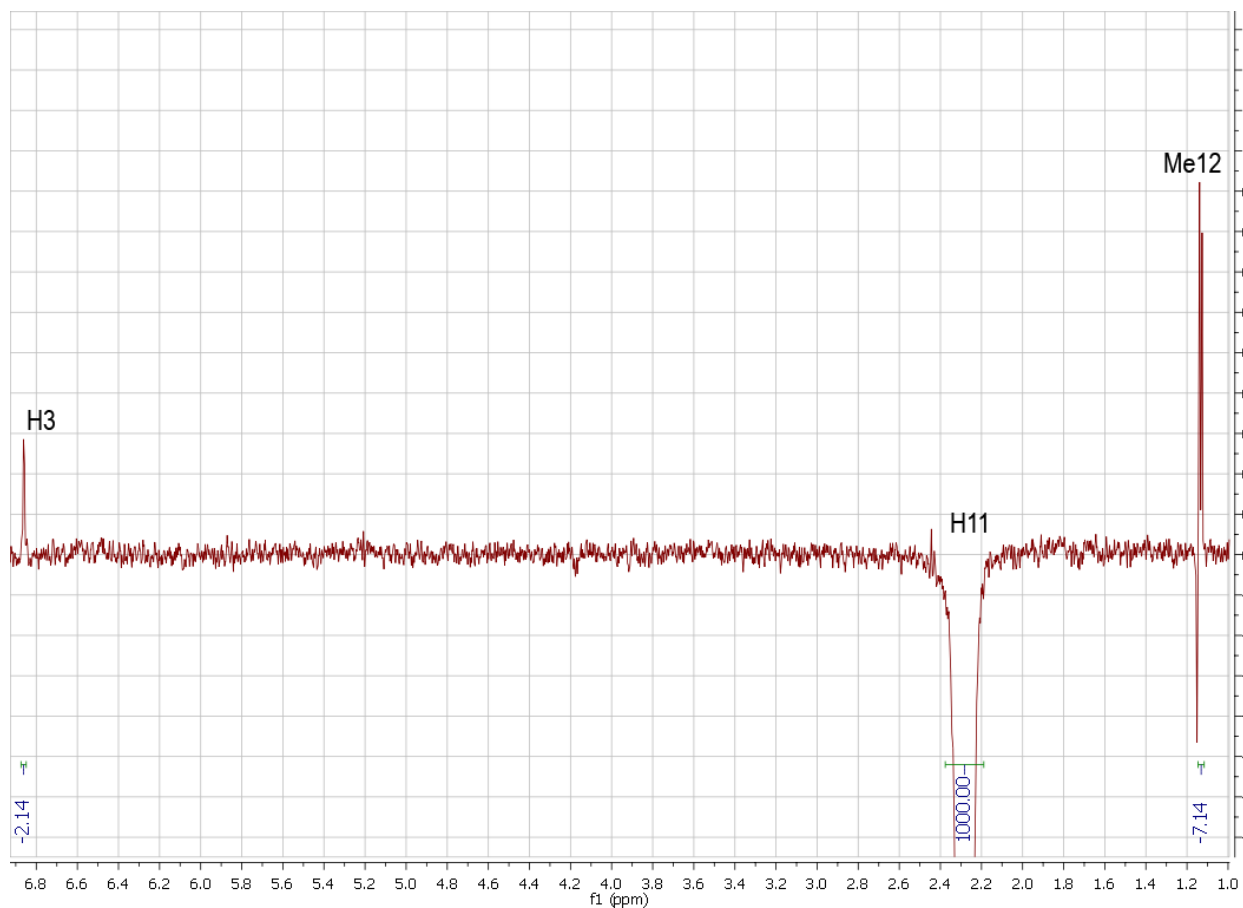


Figure S24: Selective 1D-NOESY spectrum (600 MHz, CDCl_3) of H11 of plakilactone H (**2**).

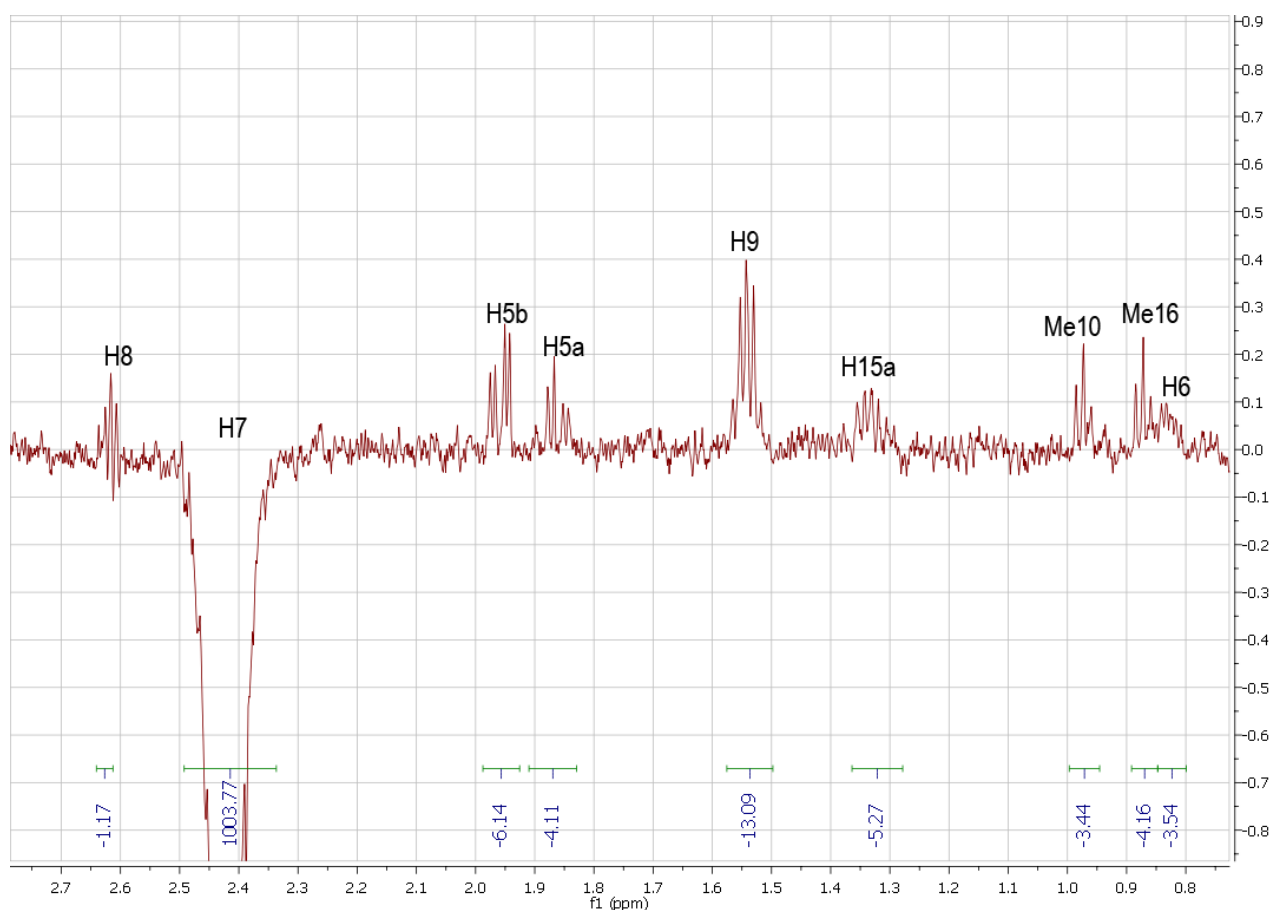


Figure S25: Selective 1D-NOESY spectrum (600 MHz, CDCl_3) of H7 of plakilactone H (**2**).

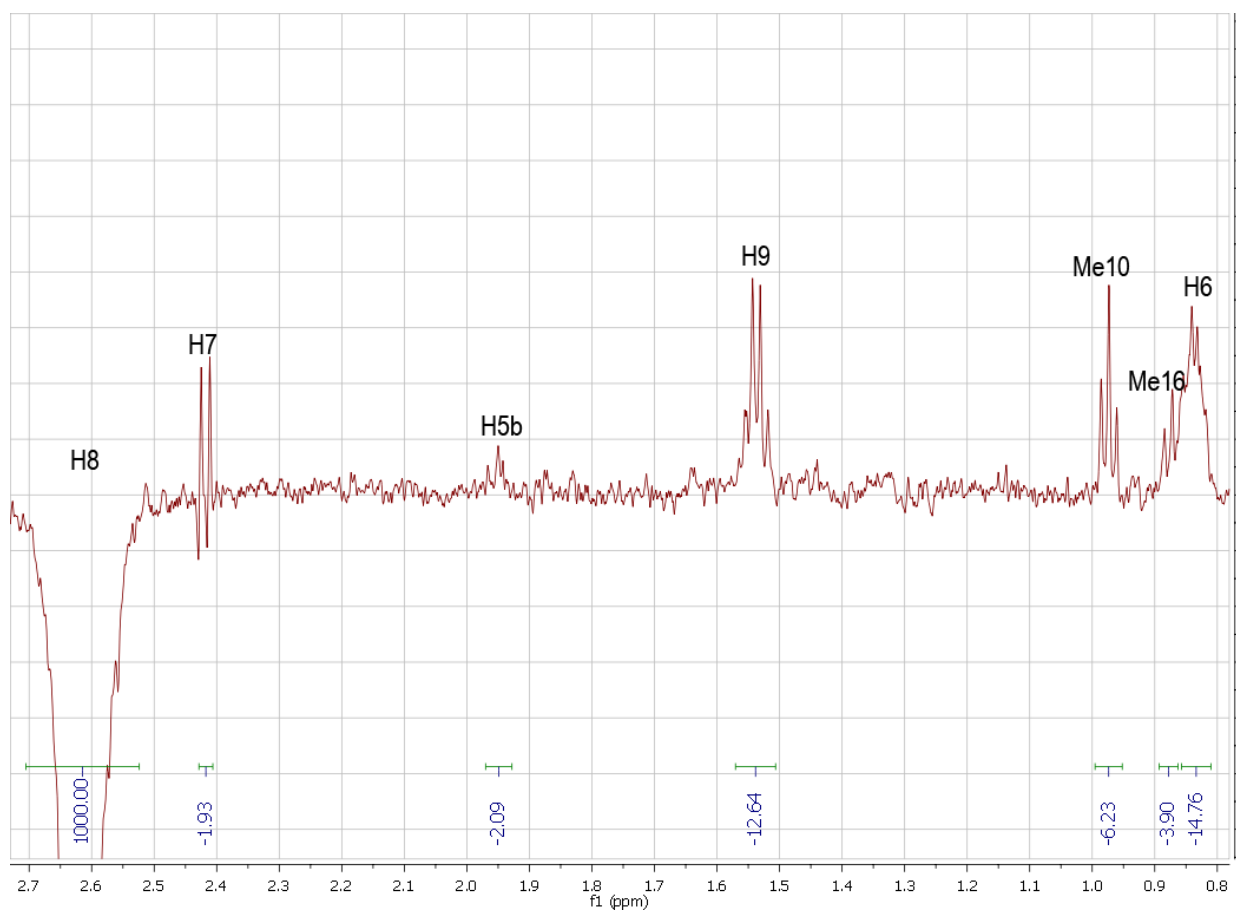


Figure S26: Selective 1D-NOESY spectrum (600 MHz, CDCl_3) of H8 of plakilactone H (**2**).

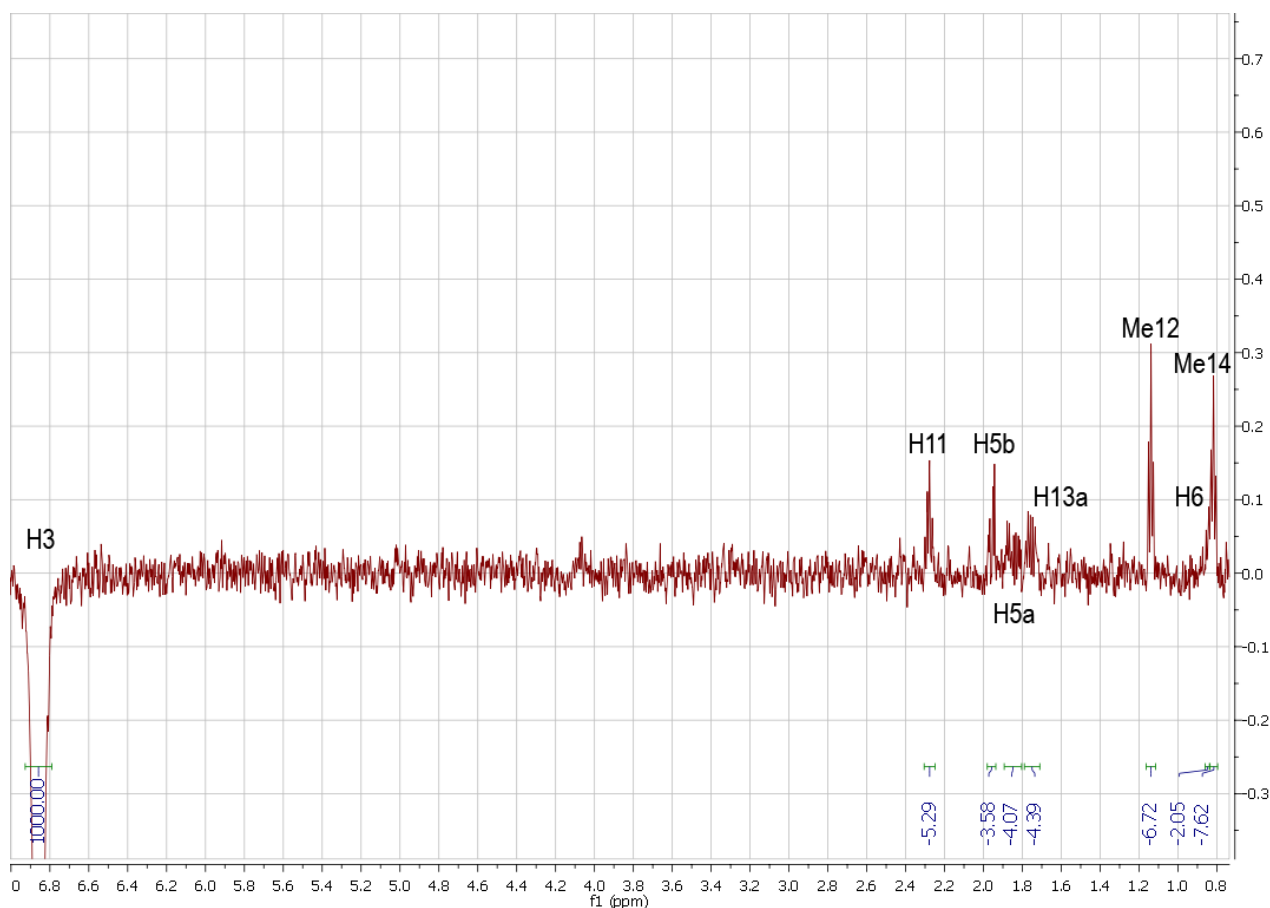


Figure S27: Selective 1D-NOESY spectrum (600 MHz, CDCl_3) of H3 of plakilactone H (**2**).

Table S2: Experimental (in CDCl_3) and calculated (in vacuo) ^{13}C chemical shifts of diastereoisomers **2a,b,e,f**.

carbon	δ_{exp}	2a	2b	2e	2f
		δ_{calc}	δ_{calc}	δ_{calc}	δ_{calc}
10	9.7	10.8	9.6	9.6	10.8
9	24.9	25.7	25.6	26.0	25.1
8	60.9	58.5	61.0	59.1	62.1
7	62.1	59.5	60.6	60.5	61.1
6	38.3	36.1	37.9	38.8	36.4
5	39.2	36.7	40.3	40.6	39.3
4	89.2	86.7	87.5	86.6	87.4
1	173.6	169.3	169.9	169.2	170.5
2	136.1	138.8	139.8	137.3	140.4
3	150.2	151.0	150.7	153.5	150.0
11	18.3	20.3	20.5	20.4	20.6
12	11.8	10.0	10.6	10.4	10.5
13	31.2	30.7	32.2	29.1	32.6
14	7.7	7.9	6.9	7.4	6.8
15	25.8	28.2	27.1	27.1	26.1
16	11.4	10.0	11.4	10.1	8.9

Table S3: Experimental (in CDCl₃) and calculated (in vacuo) ¹³C chemical shifts of diastereoisomers **1a–d**.

carbon	1a		1b		1c		1d	
	δ_{exp}	δ_{calc}	δ_{calc}	δ_{calc}	δ_{calc}	δ_{calc}	δ_{calc}	δ_{calc}
10	10.1	10.0	10.3	10.6	10.2			
9	24.0	21.6	26.2	27.5	22.1			
8	73.6	72.4	74.5	73.1	70.7			
7	75.6	76.1	71.8	79.3	76.5			
6	35.6	36.0	37.2	34.2	34.0			
5	36.2	39.2	37.0	37.5	37.0			
4	89.6	87.1	87.2	88.8	87.5			
1	173.4	169.0	169.5	172.1	169.2			
2	135.7	137.8	137.5	140.7	140.4			
3	151.2	153.2	153.7	151.4	151.5			
11	18.5	20.8	20.9	20.6	20.7			
12	12.0	11.1	11.3	11.4	11.0			
13	30.9	30.3	28.2	32.2	32.6			
14	7.8	7.3	7.3	7.2	7.4			
15	25.3	24.2	22.2	20.4	24.5			
16	10.7	9.6	11.2	11.8	10.4			

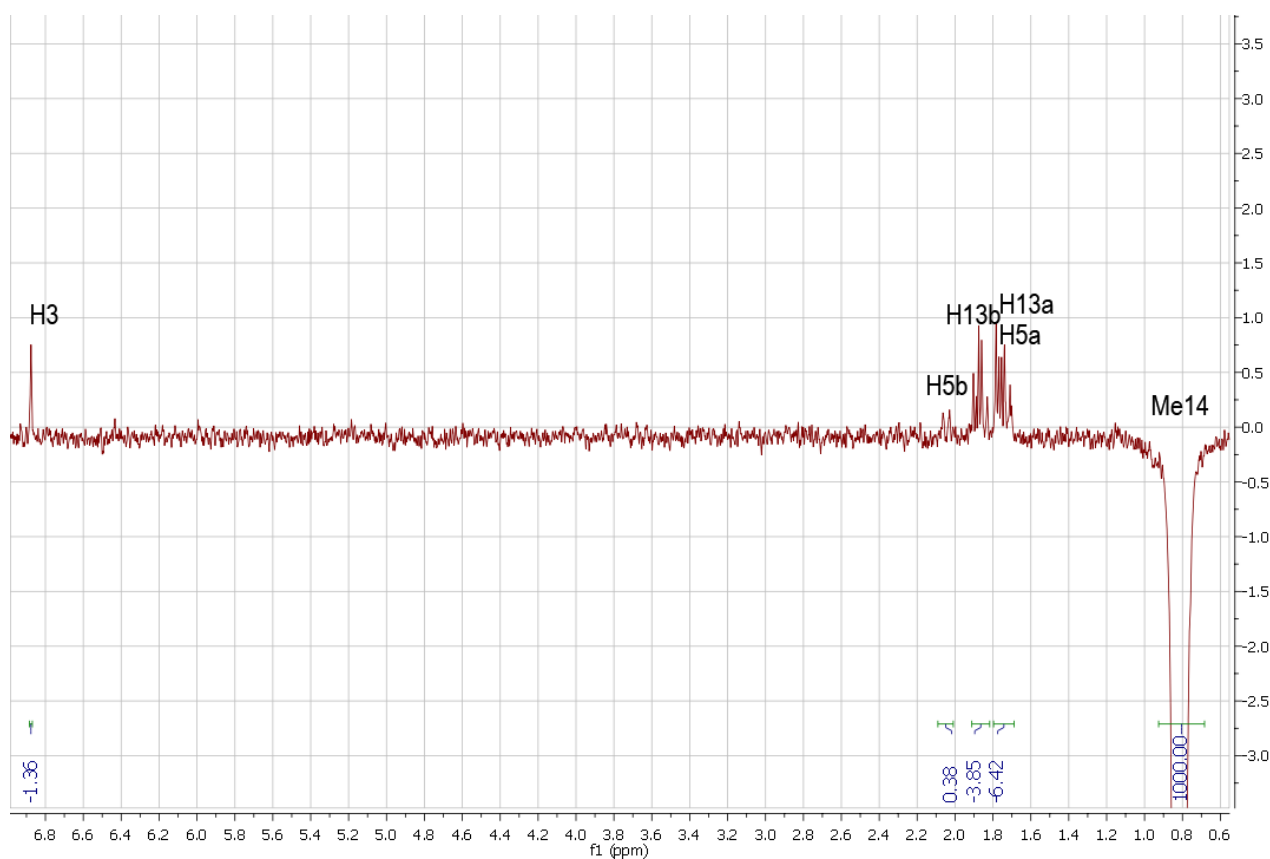


Figure S28: Selective 1D-NOESY spectrum (500 MHz, CDCl₃) of Me14 of plakilactone G (**1**).

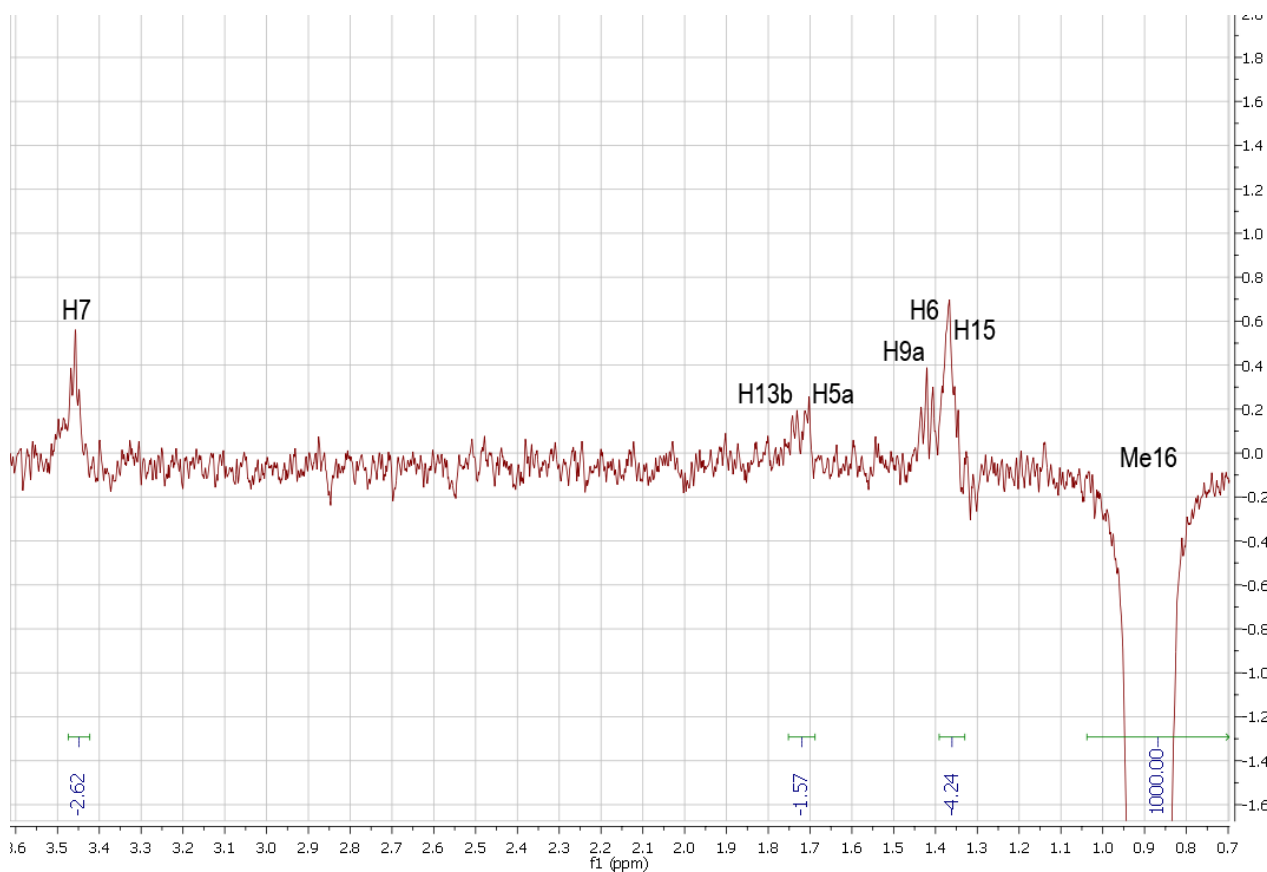


Figure S29: Selective 1D-NOESY spectrum (500 MHz, CDCl_3) of Me16 of plakilactone G (**1**).

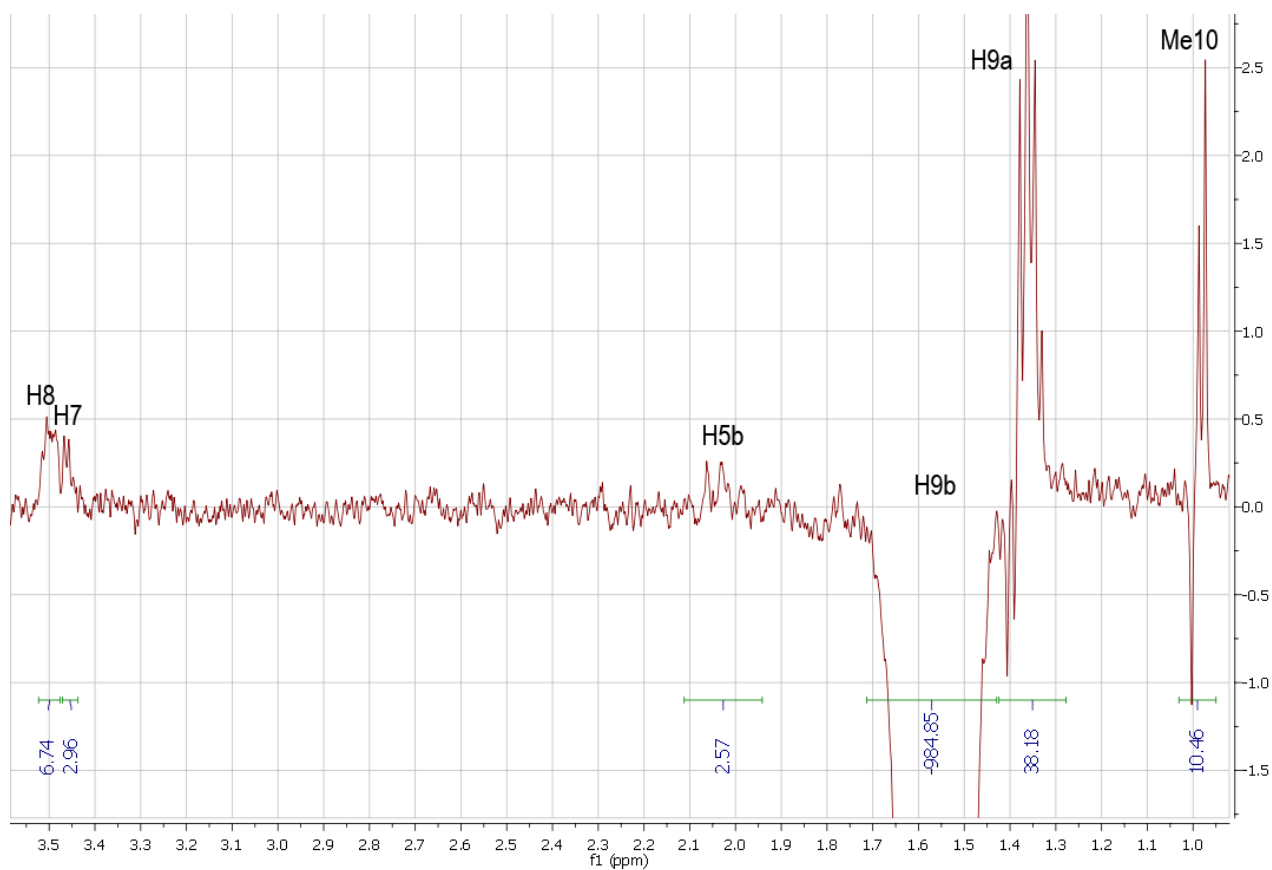


Figure S30: Selective 1D-NOESY spectrum (500 MHz, CDCl_3) of H9b of plakilactone G (**1**).

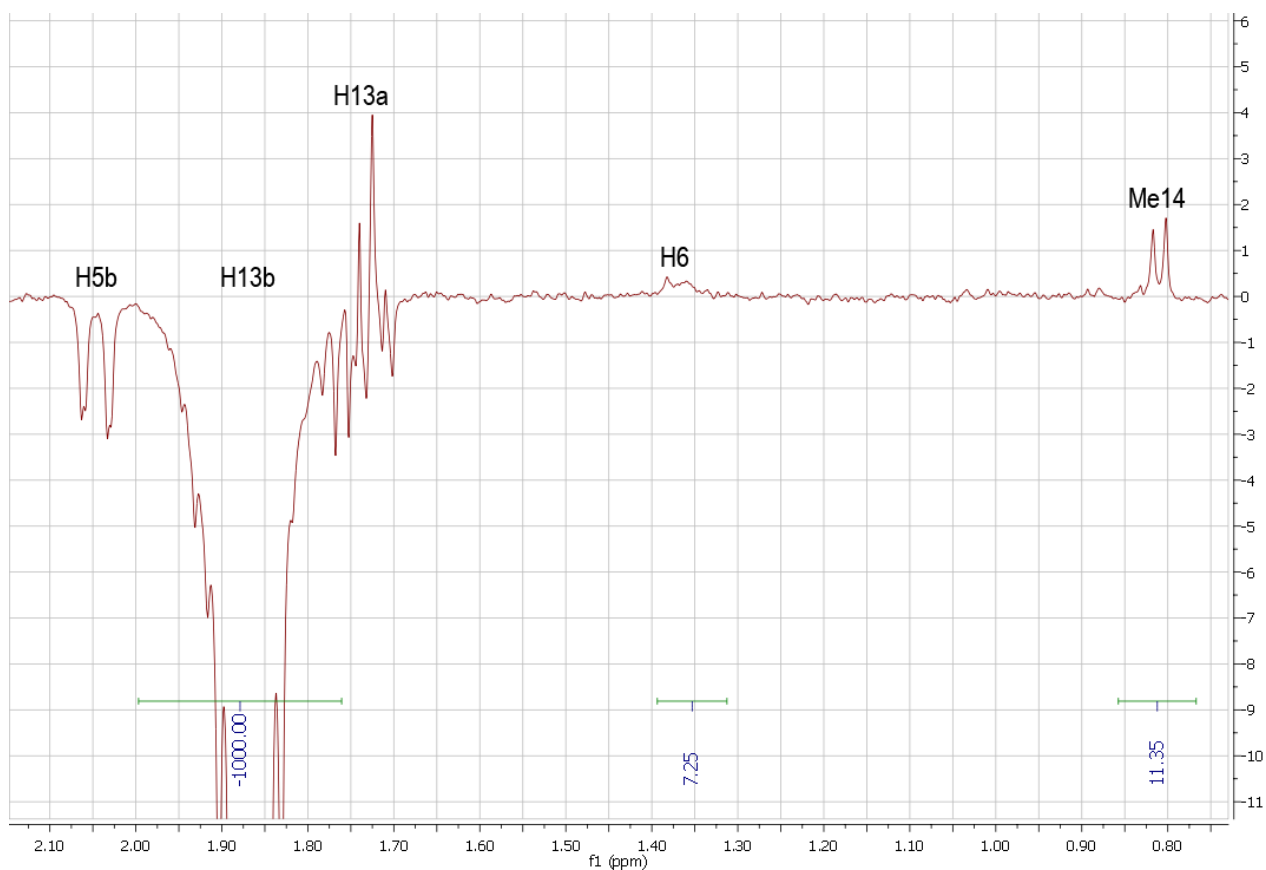


Figure S31: Selective 1D-NOESY spectrum (500 MHz, CDCl_3) of H13b of plakilactone G (**1**).

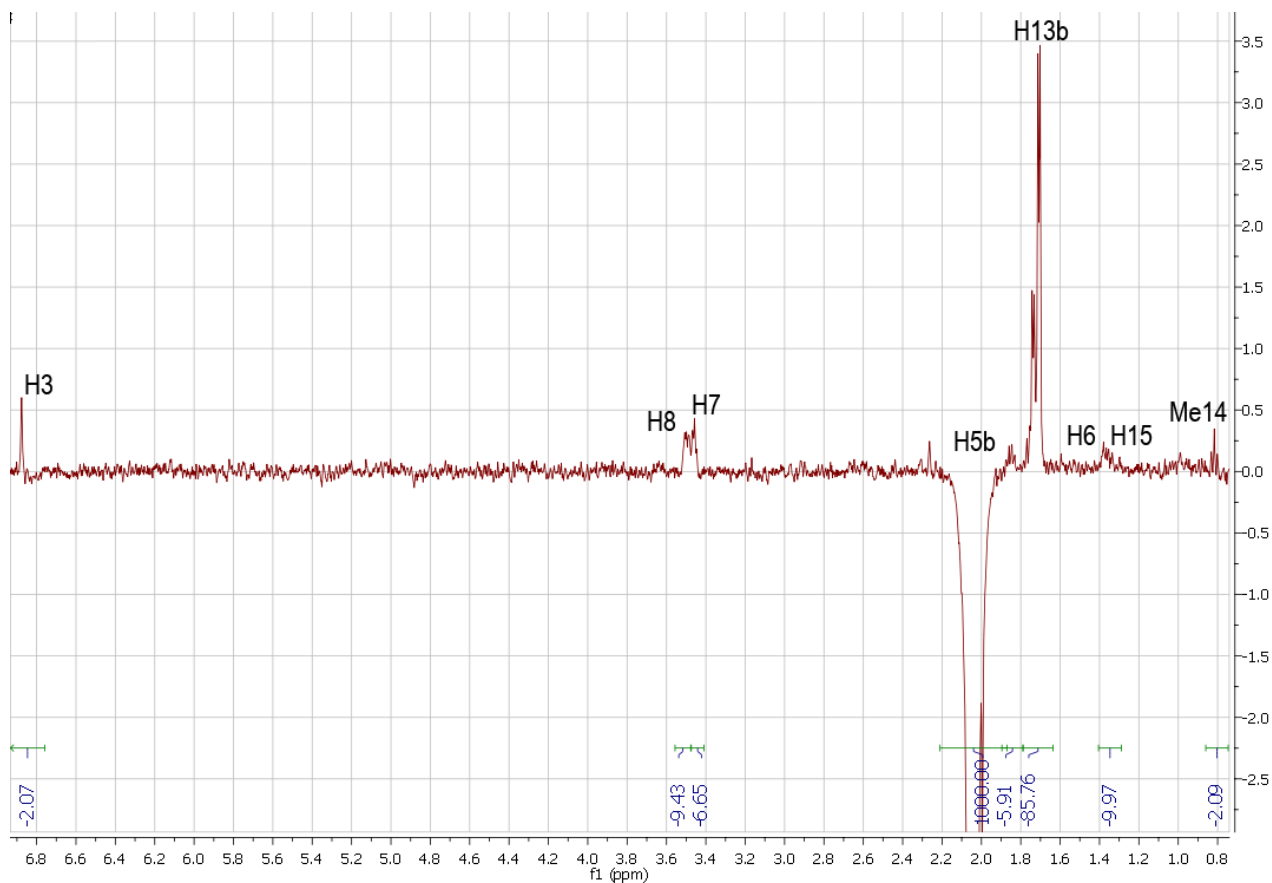


Figure S32: Selective 1D-NOESY spectrum (500 MHz, CDCl_3) of H5b of plakilactone G (**1**).

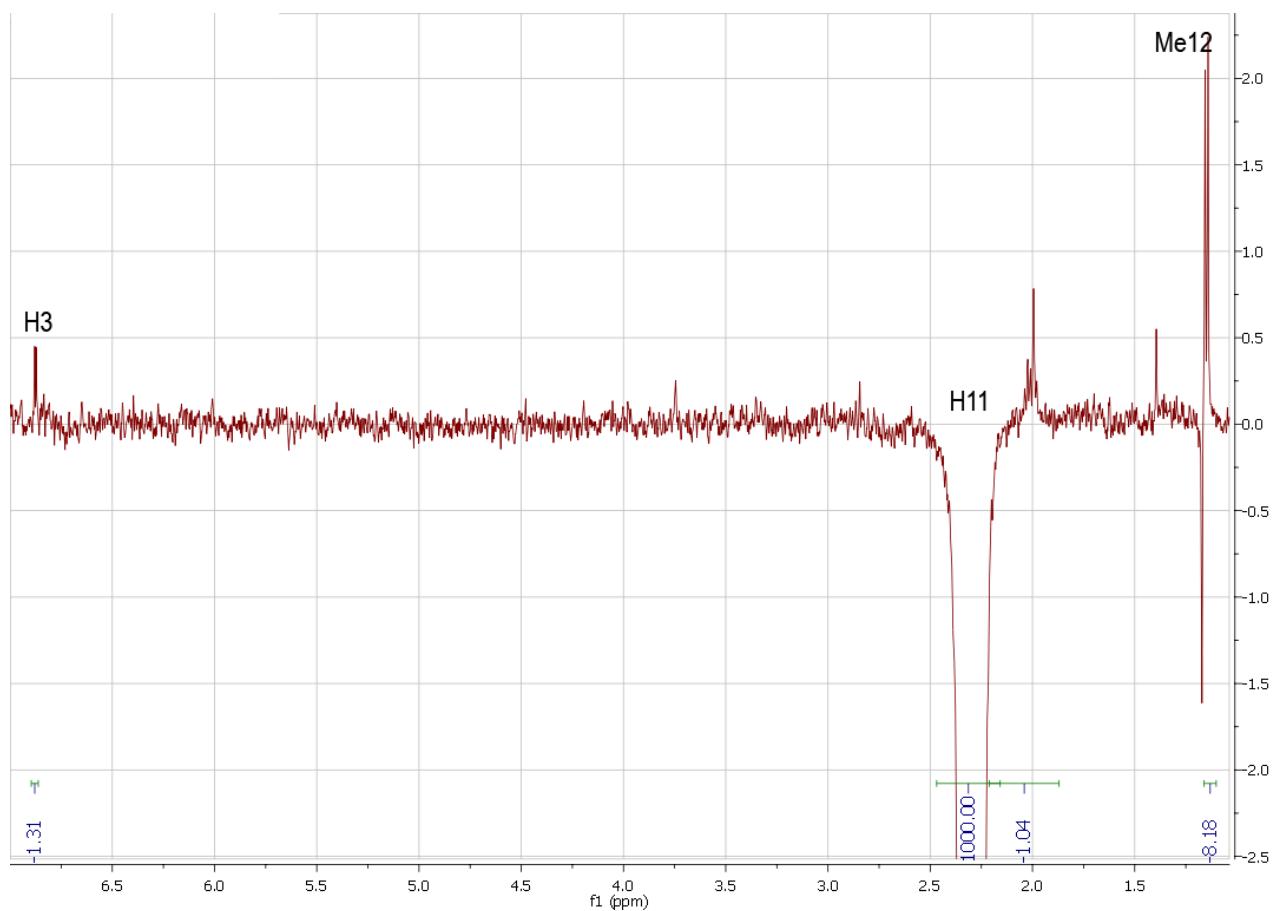


Figure S33: Selective 1D-NOESY spectrum (500 MHz, CDCl_3) of H11 of plakilactone G (**1**).

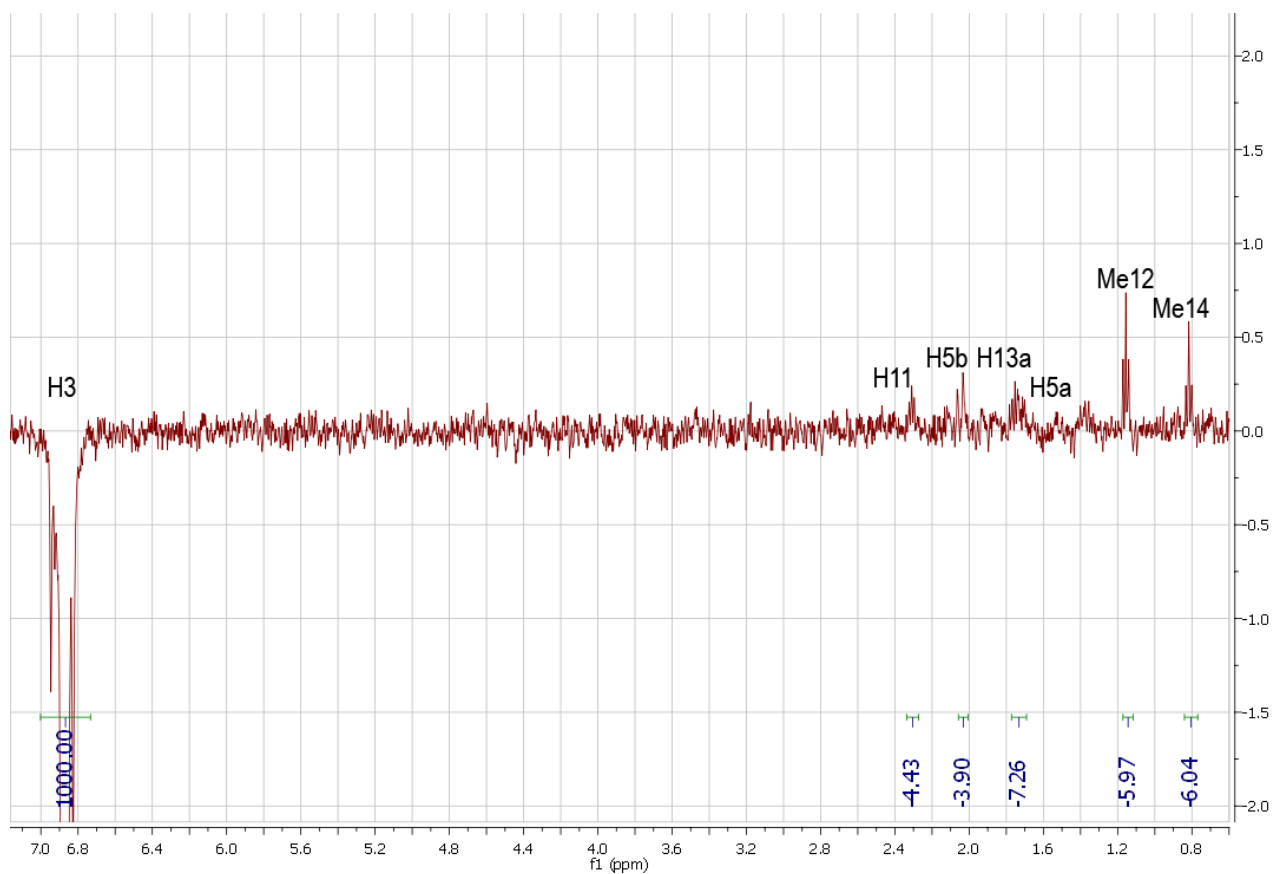


Figure S34: Selective 1D-NOESY spectrum (500 MHz, CDCl_3) of H3 of plakilactone G (**1**).

Table S4: Comparison of inter-proton distances determined by NOEs for plakilactone G (**1**) in CDCl₃ with DFT-calculated value for **1a–d**. The value in bold was used to calibrate the NOEs.

Proton	exp R _{NOE} (Å)	1a			1b			1c			1d		
		R _{calcd} (Å)	ABS % error ^a	exp R _{NOE} (Å)	R _{calcd} (Å)	ABS % error ^a	exp R _{NOE} (Å)	R _{calcd} (Å)	ABS % error ^a	exp R _{NOE} (Å)	R _{calcd} (Å)	ABS % error ^a	
H5b H5a	1.69	1.76	4%	1.73	1.76	0%	1.64	1.76	7%	1.68	1.76	5%	
H5b H3	2.99	2.94	1%	3.06	3.13	2%	2.90	2.77	5%	2.97	3.84	26%	
H5b H7	2.59	2.53	2%	2.65	3.01	13%	2.51	2.50	1%	2.57	2.55	1%	
H5b H13b	2.64	2.76	4%	2.70	2.70	0%	2.56	2.79	9%	2.62	2.68	2%	
H5b H15	2.42	2.75	13%	2.48	2.81	13%	2.35	2.85	19%	2.40	2.75	13%	
H3 H11	3.11	3.23	4%	3.18	3.19	0%	3.02	3.25	8%	3.09	3.28	6%	
H3 Me12	3.16	3.14	1%	3.24	3.22	1%	3.07	3.14	2%	3.15	3.08	2%	
H3 Me14	3.16	3.31	5%	3.23	3.22	0%	3.06	3.35	9%	3.14	3.29	5%	
H11 Me12	3.00	2.62	13%	3.07	2.62	16%	2.91	2.63	10%	2.98	2.63	13%	
H13b H6	2.55	2.88	12%	2.61	2.74	5%	2.47	4.56	59%	2.53	4.38	54%	
H13b Me14	2.84	2.62	8%	2.91	2.62	10%	2.75	2.63	5%	2.82	2.62	7%	
H9b H8	2.80	3.03	8%	2.87	2.85	1%	2.72	3.04	11%	2.78	3.06	9%	
H9b H9a	1.87	1.76	6%	2.06	1.76	8%	1.81	1.76	3%	2.00	1.76	5%	
H9b Me10	3.15	2.62	18%	3.22	2.63	20%	3.05	2.63	15%	3.13	2.62	18%	
Me16 H7	3.02	3.01	0%	3.09	4.25	32%	2.93	4.61	44%	3.00	3.12	4%	
MAE			6.8%			8.1%			13.8%			11.3%	
STD			8.8%			12.5%			19.9%			17.0%	

^a|% error| = |R_{calcd} - R_{NOE}| / [(R_{calcd} + R_{NOE})/2], absolute differences for calculated versus NOE-derived distances/calculated distances.

^bMAE = Σ[%error]/n.