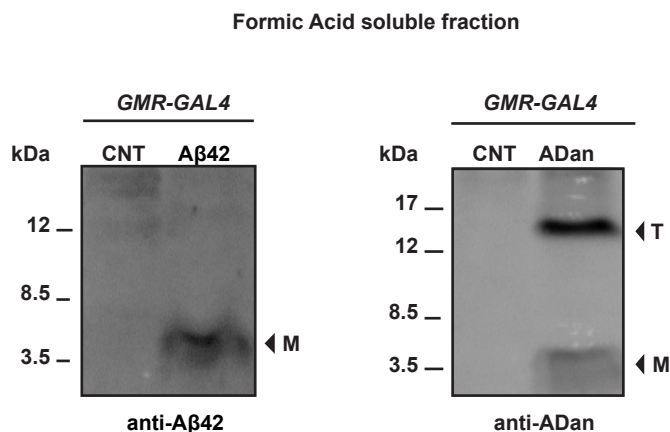


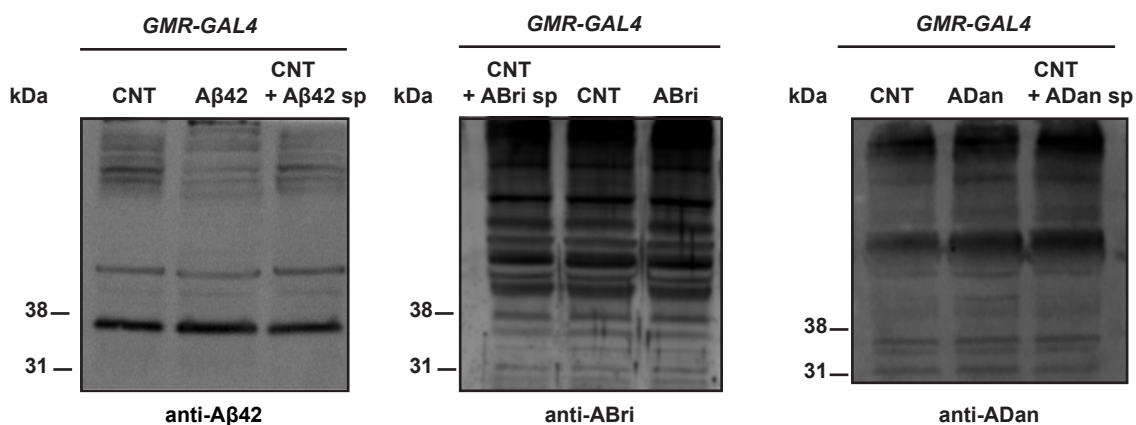
Additional file 2

A



B

Non-specific bands, (RIPA 1% SDS soluble fraction)



Supp. Figure 1. Western blots showing RIPA-insoluble amyloid peptides after solubilization

in formic acid. A, Aβ42 monomers were detected using 6E10 antibody (arrowhead). Monomers (M) and putative tetramers (T) were detected using anti ADan antibody. Note that FA soluble proteins from 200 heads homogenates were loaded, as compared to 15 heads used for the RIPA-soluble proteins as shown in Figure 3. **B**, Upper part of the Western blots shown in Figure 3, in which non-specific immunoreactivity bands are similar in all genotypes. Note the absence of specific bands suggestive of high-order oligomers for the three amyloid peptides.